



6+



1

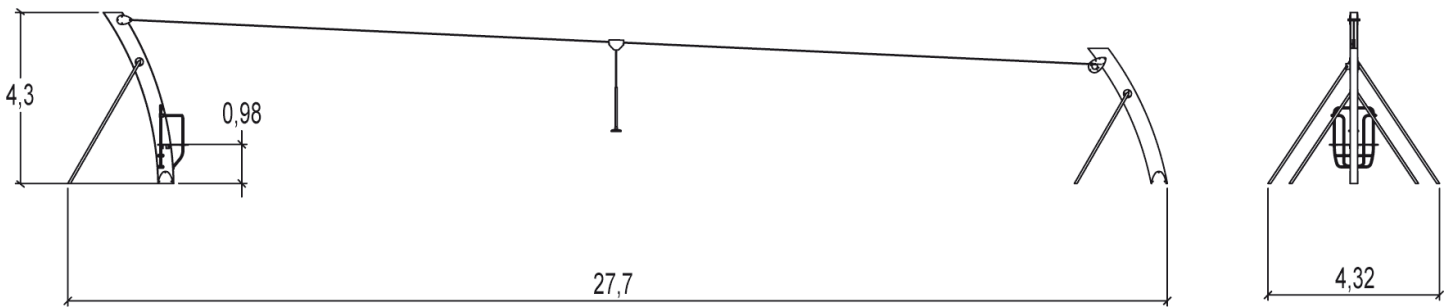
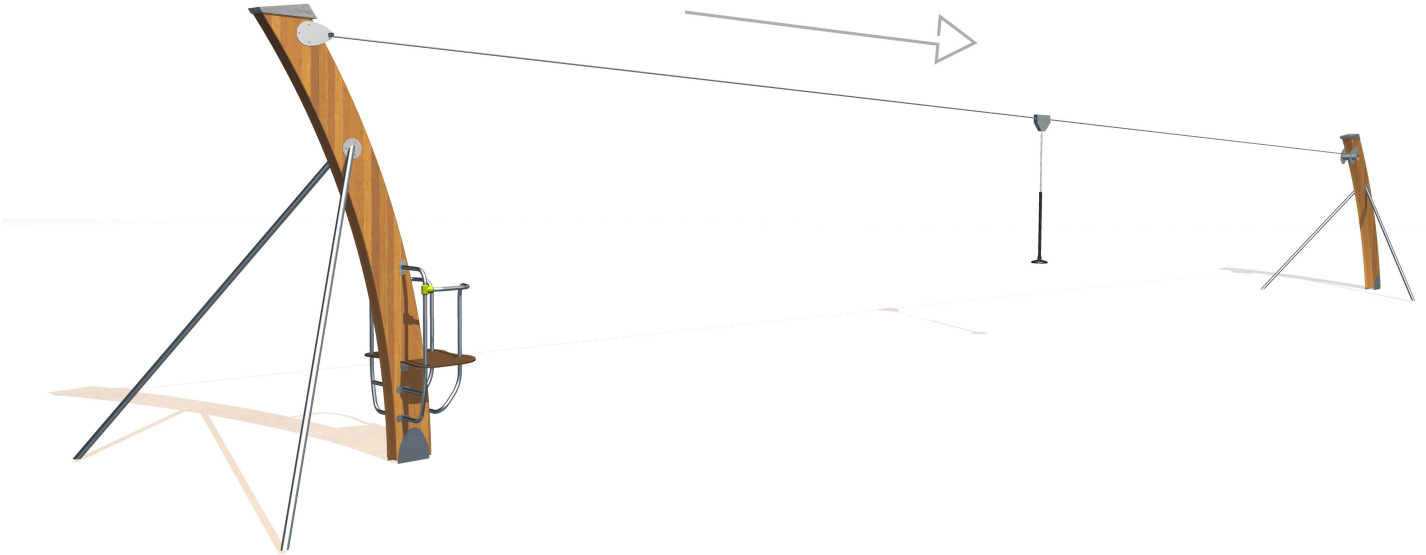


1,4m



1 = 27,7m 2 = 4,32m 3 = 4,3m

Cableway (on a level ground)



Play value : 3

sliding

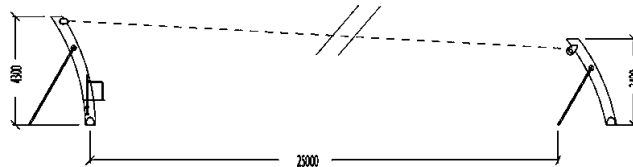


meeting



getting across





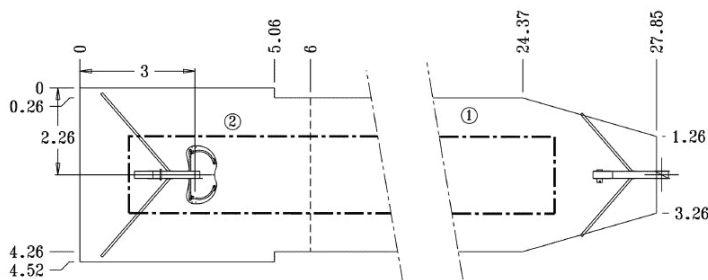


Installation of equipment

Impact area =

-  Impact area
-  Free space

		
1	1m	84m ²
2	1,40m	27m ²



2



10h30



1.66m³



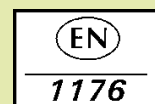
111m²



615kg



193kg



Proludic

2003-06-13