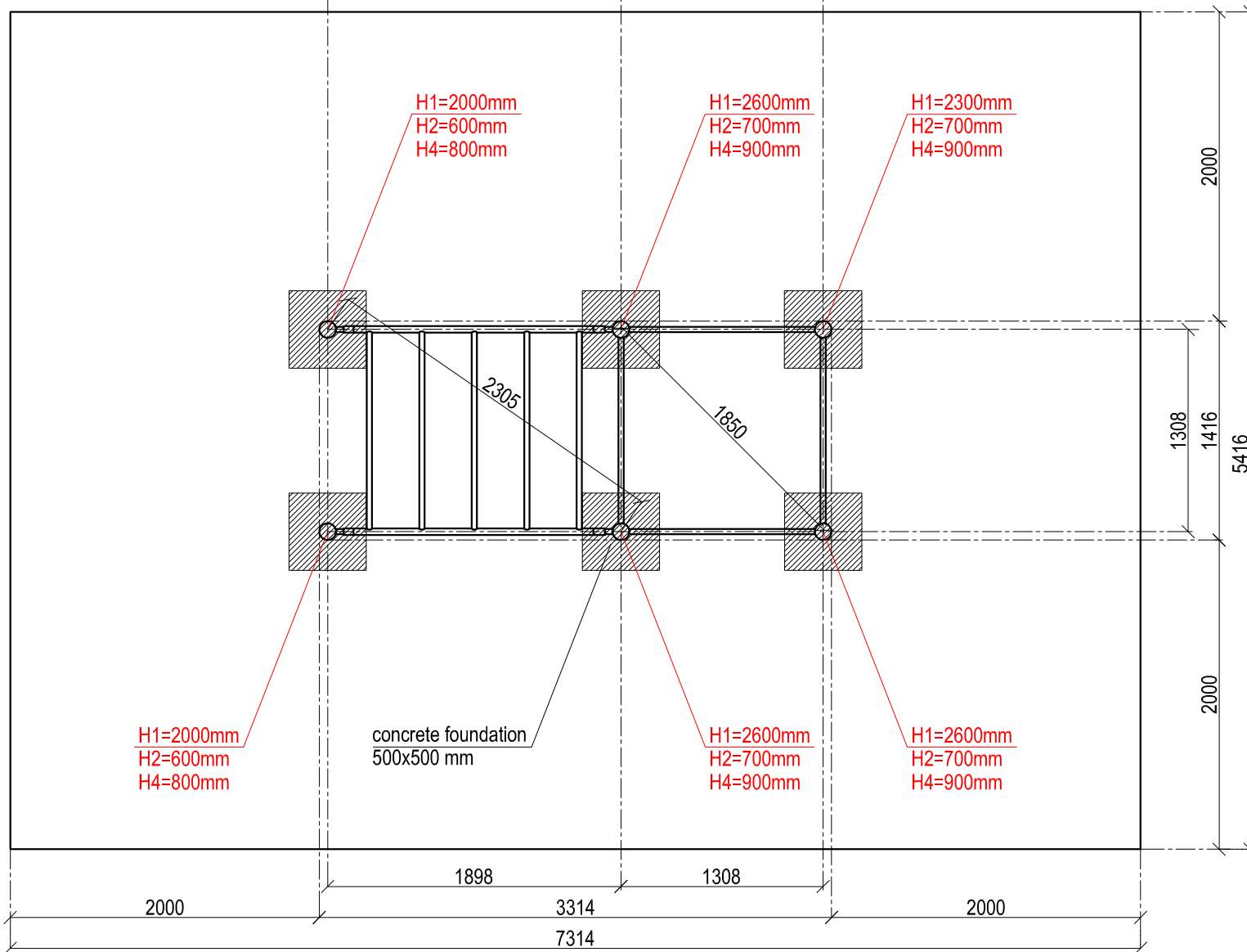
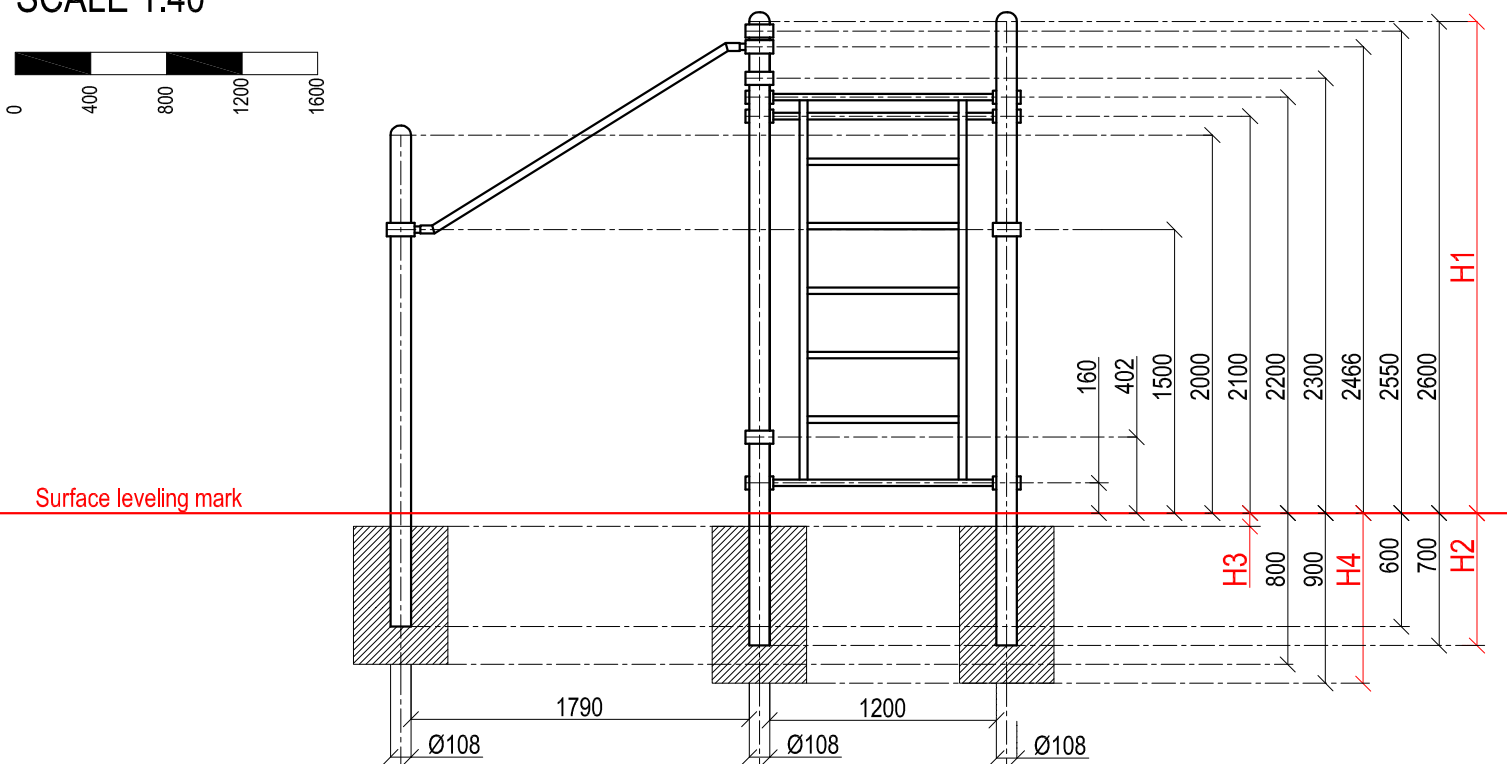
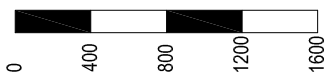


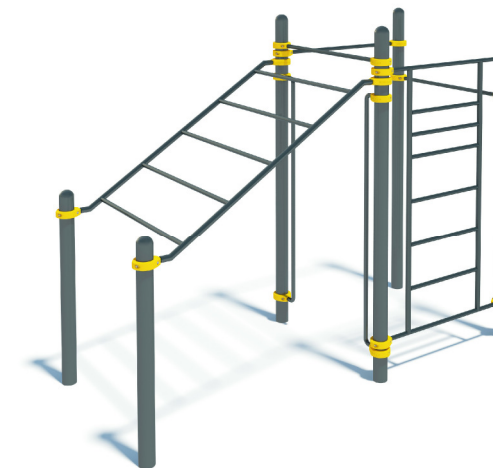
SCALE 1:40



LTD "KENGURU PRO"  
 Address: Ezera street 21-28, Riga, Latvia, LV-1034  
 VAT Reg. No. 40103750152  
 Bank: A/S DNB bank, SWIFT: RIKOLV2X,  
 Bank Account: LV65RIKO0002930161161  
 e-mail: info@kengurupro.eu  
 www.kengurupro.eu

P-012

PARA complex MIN



The complex consists of six backup columns at the height of: 2600 mm -3 pieces, 2300 mm -1 piece, 2000 mm - 2 pieces. The complex includes Swedish wall section, climb-down bars, inclined monkey bar and two pull-up bars. Monkey bars are fixed in height of 1500mm. Length of inclined monkey bar section- 1790mm, width 1308mm, distance between bars- 400mm. All bars and sections are fixed to the backup columns by means of collars. Weight - 284.90 kg.

**Installation instructions:**

- Choose a suitable underground for the unit (see page 2, table 2)!
- Prepare the construction pit with a drilling machine or other devices.
- Before pouring the concrete all structures elements must be leveled and fixed.
- Complex elements must be fixed and bolted together with metal clamps.
- Ready-made C25 concrete should be used.
- Crossbars installation height can be changed according to customer's wishes.
- Approximately 0,15m<sup>3</sup> concrete is needed for each spot foundation.
- Under the structures we recommend to install absorbing rubber cover.

The size of the hole for the foundation is depending on the consistency of the ground. The dimensions mentioned above are applicable for normal conditions with firm ground. If the ground is extremely soft, a much bigger foundation is needed. Use only appropriate material and follow the installation instructions closely!!!

Foundation plan and area of movement of the P-012 PARA complex MIN				Technical information		
Foundation when using Shock absorbing underground (syntetic - rubber granulates)		Beveling of foundation when using loose filling material		width:	1416 mm	
<b>H3</b>		<b>H3</b>		height:	2650 mm	
40 mm	> 1.2.....1.4 m	20 cm	< 1.0 m	length:	3314 mm	
50 mm	> 1.5.....1.7 m	30 cm	< 2.0 m	largest part:	3350 mm	
60 mm	> 1.8.....2.0 m	40 cm	< 3.0 m	weight:	284,90 kg	
70 mm	> 2.1.....2.5 m			floor space required	5416 x 7314 mm	
				pipe measurements:	diameter:	wall thickness:
					108 mm	3.2 mm
					42.4 mm	3.2 mm
					33.7 mm	3.2 mm
				metal parts:	steel, galvanized, powder coated RAL 7016 (anthracite grey)	
				metal clamps:	aluminium, powder coated, RAL 2004 (pure orange)	
				bolts for metal clamps:	stainless steel, Pin Hex Button Head Security Screws M10	
				max. free fall height:	< 2600 mm	possible underground see DIN 79000:2012-05 Tab.2 or installation instructions
				user age:	children under 14 years only under surveillance of parents	
				maximum user weight:	130 kg	
				certificates:		

