



1+



2



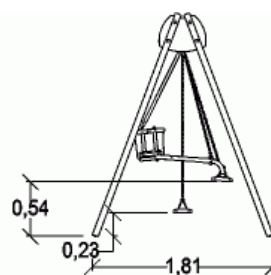
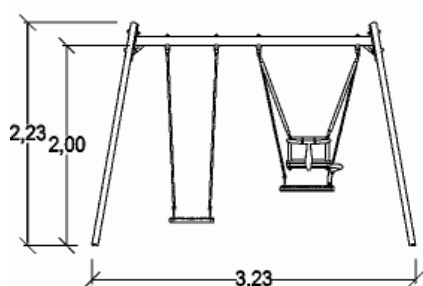
1,39m



1 = 3,3m  
2 = 1,8m  
3 = 2,4m



Motor inclusion  
Sensory inclusion  
Mental inclusion



Play value : 5

meeting



x1

resting



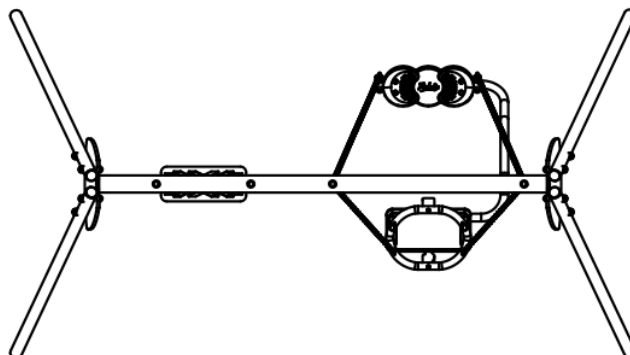
x1

swinging



x3

## Components



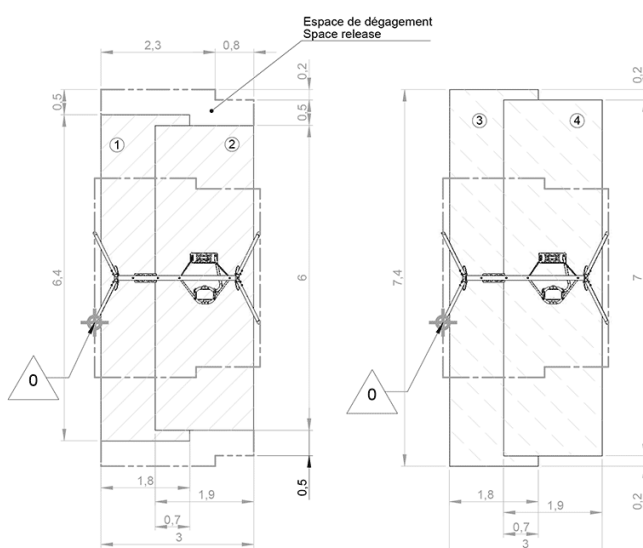
## Installation of equipment

Impact area =

— Impact area  
- - - Free space

① Zone d'Impact Sol souple  
Impact Area Wetpour  
Area de Impacto  
Fallraum bei synthetischem Fallschutz

④ Zone d'Impact Sol fluent  
Impact Area Loose particle material  
Arenero  
Fallraum bei losem Bodenmaterial



1	1,2m	7,14m <sup>2</sup>
2	1,39m	11,66m <sup>2</sup>
3	1,2m	8,21m <sup>2</sup>
4	1,39m	13,6m <sup>2</sup>



2

02h00

0.11m<sup>3</sup>

18.8m<sup>2</sup>

95kg

20kg

EN  
1176