

1. Applications

EUROFLEX® Diamond is a design element that can be used as a seat, balancing element or demarcation element. It lines up seamlessly between cube and ball and provides a further design option.

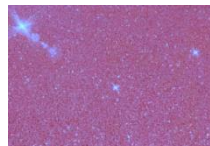
EUROFLEX® Diamond is manufactured by an environment-friendly process and can be recycled as process raw material at the end of their service life.

2. Material standard Diamond

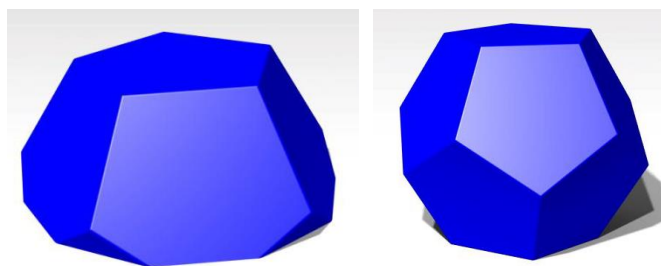
Rubber granulate: granulated recycled rubber
Binding agent: MDI polyurethane
Colour: red, green, grey or black

Diamond with EPDM topping

Rubber granulate: granulated recycled rubber
Binding agent: MDI polyurethane
Topping: Coloured EPDM rubber granulate
Colour:



Available as glitter version on request.



All information without guarantee, subject to change. The Data Sheet is not subject to any change service. Each current and valid from can be recalled at www.kraiburg-relastec.com/euroflex

3. Characteristics

Surface: minor colour variation possible
smooth with open pores

4. Dimensions / Tolerances half Diamond

Dimension: approx. 500 x 500 x 225mm
Weight standard: approx. 29,0 kg
Weight EPDM covered: ca. 32,0kg
Tolerances: +/- 0,8%
Ground anchor: Diameter ca. 42,8 mm, Length approx. 750 mm

5. Dimensions / Tolerances Diamond

Dimension: approx. 500 x 500 x 450 mm
Weight standard: approx. 58,0 kg
Weight EPDM covered: approx. 64,0kg
Maßtoleranzen: +/- 0,8%
Ground anchor: Diameter ca. 42,8 mm, Length approx. 750 mm

6. Test Data

Production facility inspection

Fire resistance: E (DIN EN 13501-1, 2010)

7. Installation

Install EUROFLEX® Diamond by inserting their steel anchors. Please note the complete installation instruction.