

# WaggaWagga

Unique Design and high Play Volume  
on a narrow Footprint



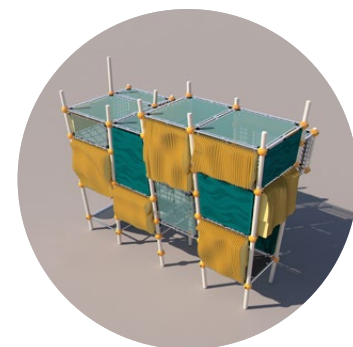
# Maximum Play Volume – minimum Footprint: WaggaWagga

Our latest product WaggaWagga is a modular, multifunctional play structure with a distinctive design and a large play volume offering a variety of play functions on a narrow footprint. The largely clad facade results in little safety surfacing and reduces the need for safety surfacing material.

With its numerous climbing and play elements, WaggaWagga provides varied play for many children at the same time, while only requiring a narrow standing area. Different net elements for climbing and overcoming or rubber membranes for romping or relaxing form an exciting play landscape inside the climbing frame. Another highlight are two balconies connected by a net tunnel. To make WaggaWagga even more versatile, further elements can be added: Slides or play panels increase the play value.

For the exterior design, you can choose from the following four styles: Blades, Joe's Grid, Greenville or Miami. The innovative transparent option Joe's Grid, themed perforated panels as well as new three-dimensional wave-shaped Blades made of HPL are available. A mixed style is also possible. The perforated panels can be customized for special projects. Choose your favorite color combination and create your individual WaggaWagga!

## WaggaWagga Styles



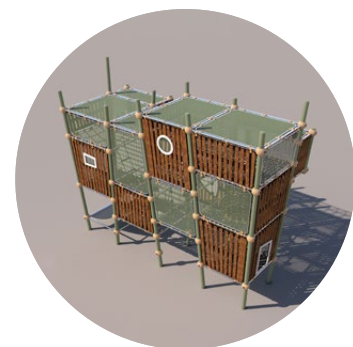
### Blades

The undulating HPL panels offer a unique design and, in combination with themed perforated panels and transparent Joe's Grid, give the play equipment a modern and distinctive look.



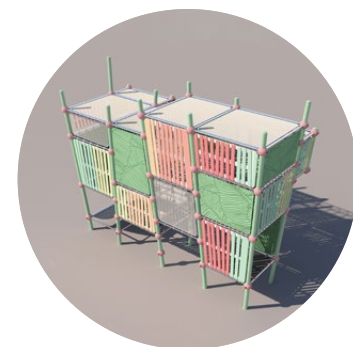
### Joe's Grid

WaggaWagga can be designed with our newly developed see-through Joe's Grid and thus completely transparent, which gives the climbing structure an industrial look and makes it easier to supervise the children.



### Greenville

Cladding with bamboo panels in the design of our Greenville product line is also possible. This creates a natural look of the play structure.



### Miami

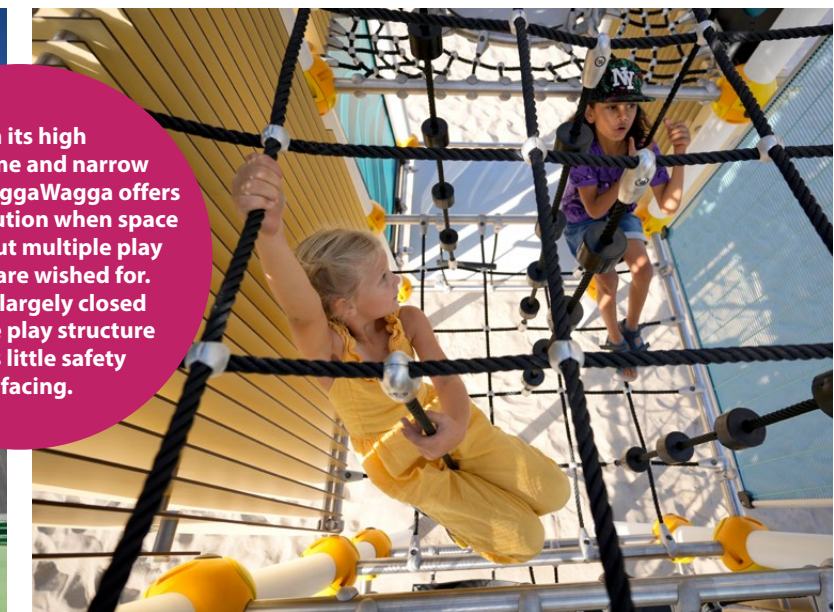
The five soft pastel shades of the "Miami" style in which the facade elements are clad make WaggaWagga a real eye-catcher in any environment.



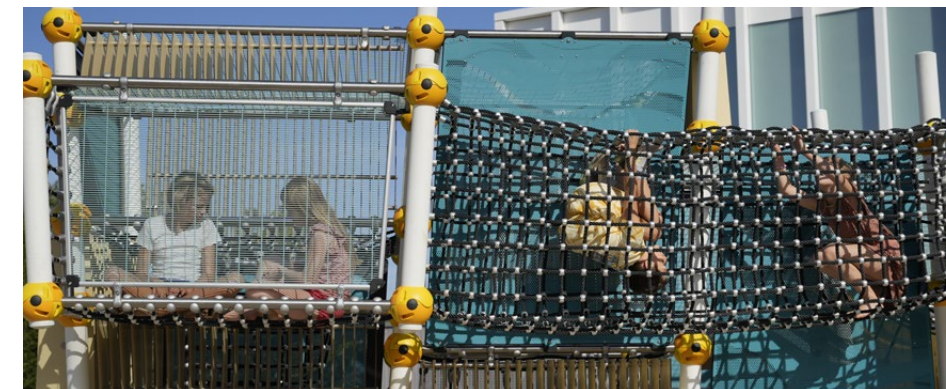
Thanks to its modular system, WaggaWagga can vary in length and height.



With its high play volume and narrow footprint, WaggaWagga offers a perfect solution when space is limited but multiple play functions are wished for. Due to its largely closed facade, the play structure requires little safety surfacing.



Berliner's transparent option Joe's Grid, themed perforated panels and wave-shaped blades give the play equipment a unique look and create transparency.



## Technical Insights

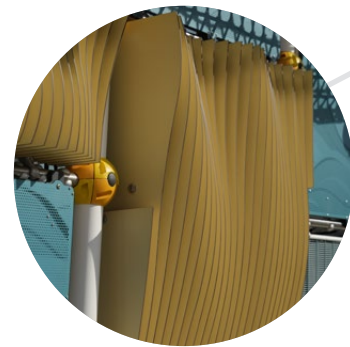
WaggaWagga brings a lot of technical innovations to the table. Various panels not only give the play equipment a modern and unique look, but also reduce the need for safety surfacing and are mostly transparent. In our newly developed Joe's Grid, a steel grid is glued into an aluminum profile frame. Due to the bar spacing of 7.5 mm, there are neither finger traps nor the possibility of climbing on the facade. On the perforated panels the different sized holes create a three-dimensional effect. Another novelty are the blades – high-quality wave-shaped panels made of HPL – which turn the play equipment into a real piece of art.

A natural language of form is realized through seemingly randomly chosen slanted posts. The patented Polynode clamp encloses the posts. By screwing the four parts of the Polynode together with a total of eight vandalism-proof TX-45 screws, the horizontal tubes and all possible add-on parts are positively connected.



### Play Elements

There is a lot to discover inside WaggaWagga! A variety of play elements such as rope ladders, net tunnels, rubber mats and climbing ropes await little climbers behind the facade and make climbing the three levels a fantastic adventure.



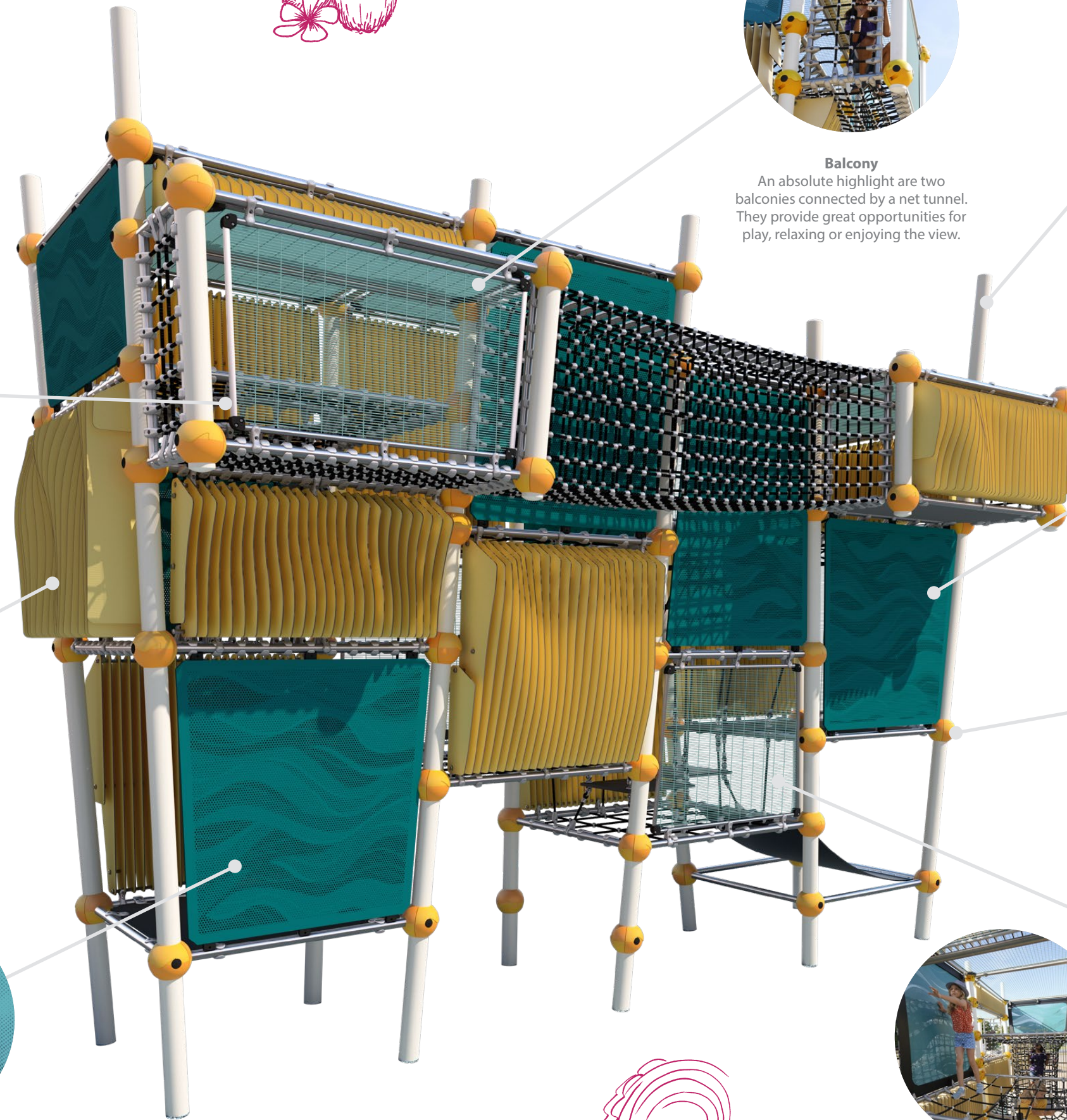
### Blades

The new HPL panels with their different contours form an undulating facade and create transparency in the front view.



### Play Panels

Integrated sensory-motor play panels train motor and auditory skills and offer children with physical impairments the opportunity to participate in play.



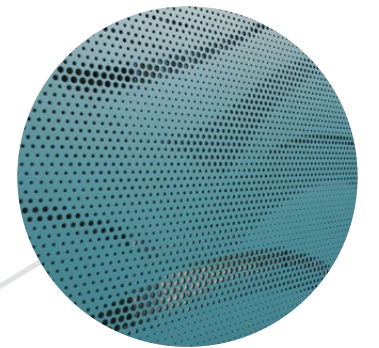
### Balcony

An absolute highlight are two balconies connected by a net tunnel. They provide great opportunities for play, relaxing or enjoying the view.



### Posts

The inclined posts are continuous and give the overall framework its stability. The post diameter of 108 mm gives the unit an elegant look.



### Perforated Plates

You can freely choose the pattern for the perforated plates. The representation through the holes between 2.1 and 7.5 mm makes the selected motif appear three-dimensional and avoids finger traps.



### Polynode

The patented Polynode clamp consists of four parts and can be individually colored. The horizontal tubes are held inside the Polynode without screws.



### Little Safety Surfacing

By covering the play equipment with panels, only a small amount of safety surfacing is required, reducing the need for safety surfacing material.



### Joe's Grid

Thanks to the transparent Joe's Grid the caregivers always have the children in view. The steel grid is held in an aluminum profile frame. The grids can be powder-coated in any RAL color.



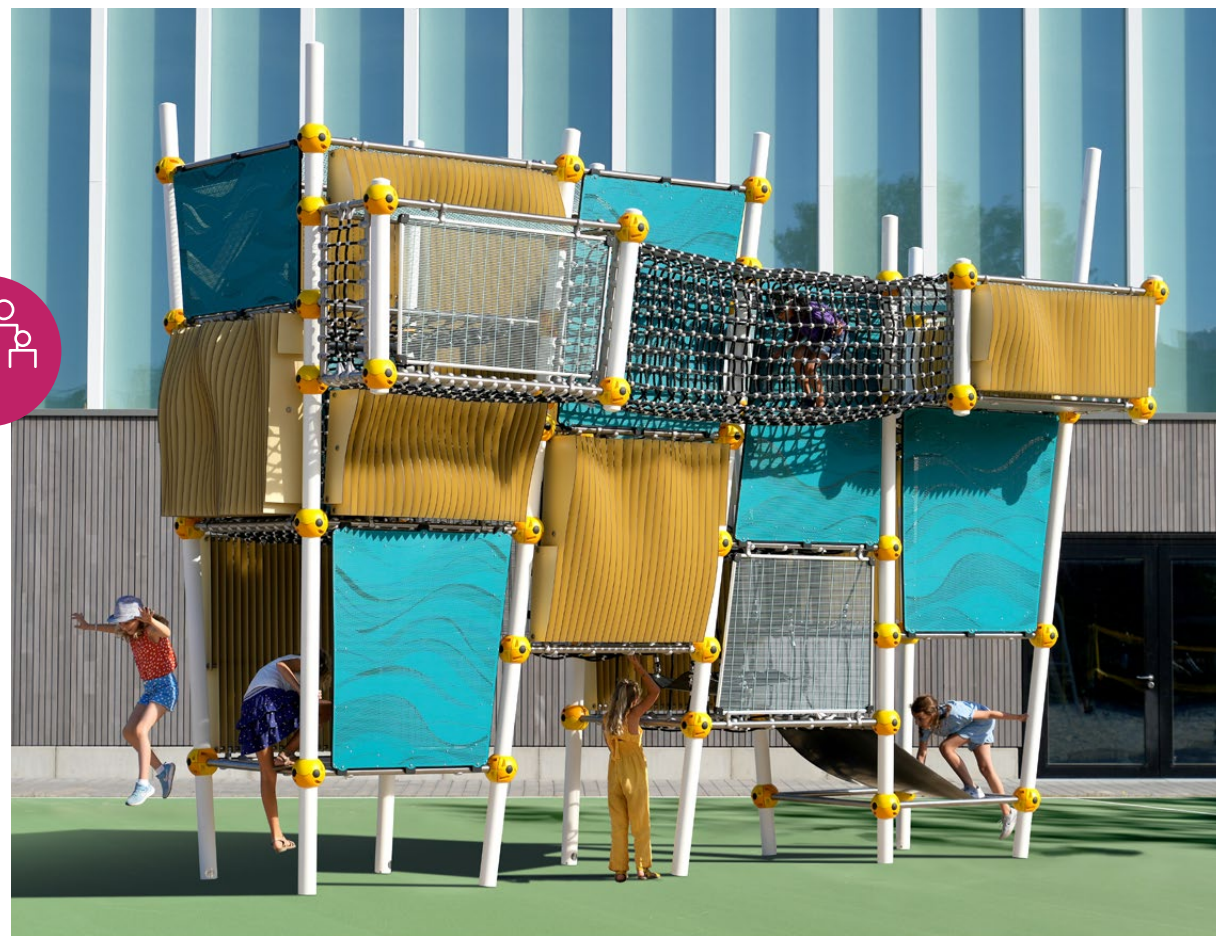
## WaggaWagga.01

WG.001.001

	(m)	6,8 x 3,1 x 5,1
	("-")	22-1 x 10-0 x 16-7
	EN 1176 (m)	9,1 x 4,6
	ASTM/CSA (m)	9,7 x 5,3
	ASTM/CSA ("-")	31-11 x 17-2
	EN 1176 (m)	1,59
	ASTM/CSA ("-")	6-0
		5-12



WaggaWagga.01 combines four towers with novel panels and innovative play elements. Two balconies connected by a net tunnel ensure new exciting play possibilities. Whether indoors or outdoors – its technical finesse, the highest quality, the unique design and the large play volume on a narrow footprint make WaggaWagga.01 a favorite play equipment!



Blades Style



Complete your WaggaWagga with a Fast Lane Slide that can be customized to your theme!



## WaggaWagga.02

WG.002.001

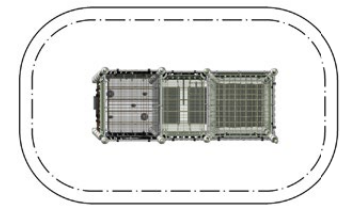
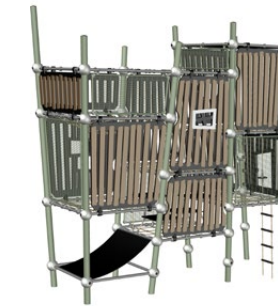
	(m)	5,0 x 2,1 x 5,1
	("-")	16-2 x 6-9 x 16-7
	EN 1176 (m)	7,8 x 4,6
	ASTM/CSA (m)	8,5 x 5,2
	ASTM/CSA ("-")	27-8 x 17-1
	EN 1176 (m)	1,59
	ASTM/CSA ("-")	6-0
		5-12

Even very little space is no obstacle to varied play. This small WaggaWagga.02 fits perfectly into a small space and offers lots of fun at the same time.



Each size is available in all four styles.

Greenville Style



## WaggaWagga.03

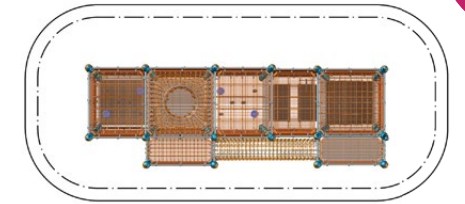
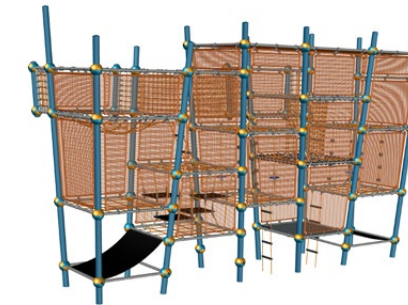
WG.003.001

	(m)	8,1 x 2,8 x 5,1
	("-")	26-4 x 9-1 x 16-7
	EN 1176 (m)	10,6 x 4,6
	ASTM/CSA (m)	11,2 x 5,2
	ASTM/CSA ("-")	36-9 x 17-1
	EN 1176 (m)	1,59
	ASTM/CSA ("-")	6-0
		5-12

A huge adventure awaits anyone who climbs this large WaggaWagga.03. With only a small increase of the safety zone, there is an amazing amount of play volume and climbing possibilities.



Joe's Grid Style





Berliner Seilfabrik  
Play Equipment Corporation  
96 Brookfield Oaks Drive  
Suite 140  
Greenville, SC 29607

T + 1 864 627 1092  
F + 1 864 627 1178

info@berliner-playequipment.com  
www.berliner-playequipment.com



Published: November 2023