



1+



10



0,29m



1 = 1,34m 2 = 1,34m 3 = 0,29m



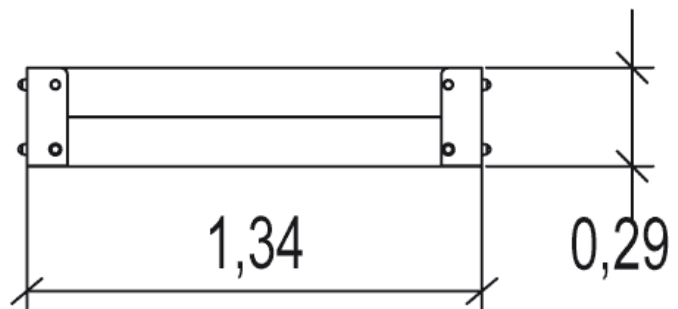
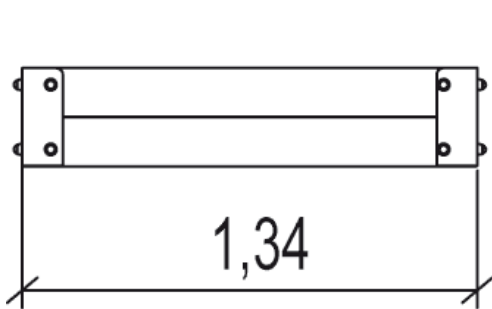
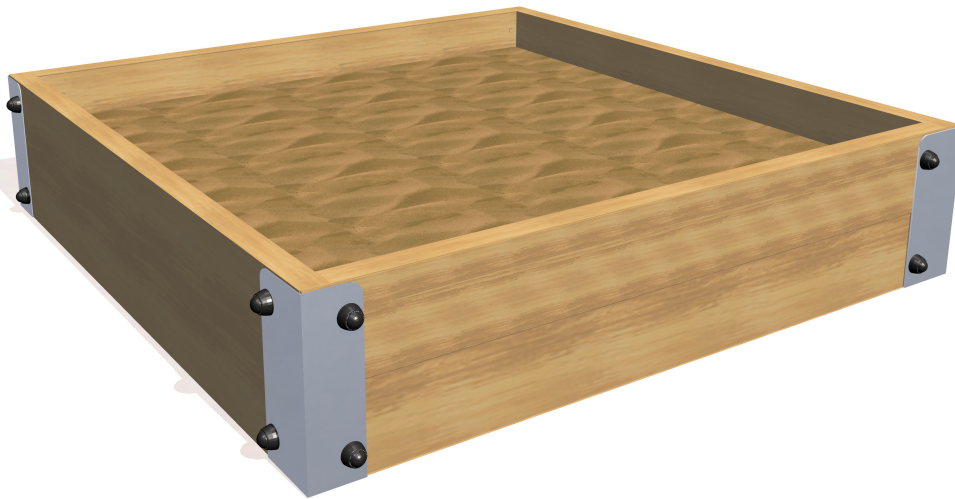
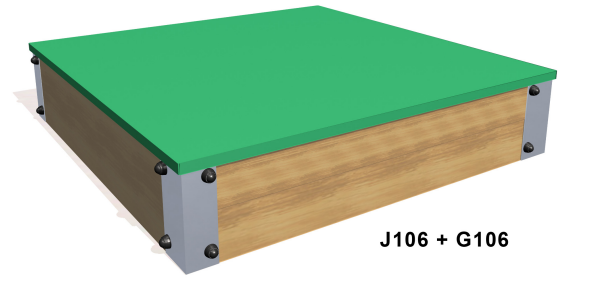
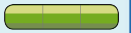
Motor disability

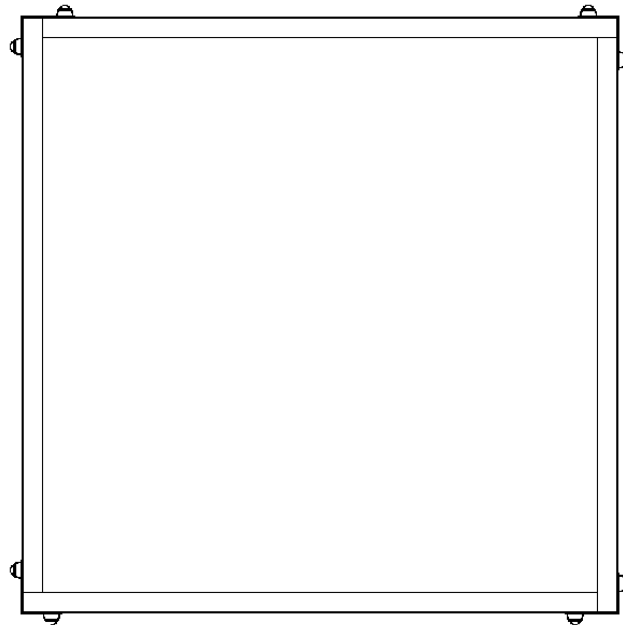


Sensorial disabilities



Learning disabilities





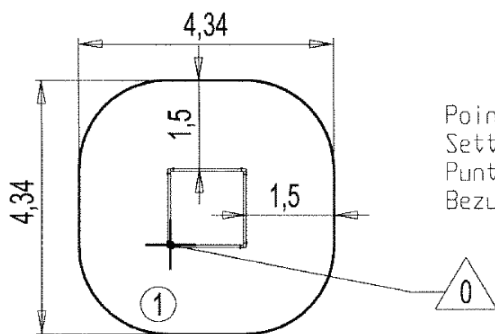


Installation of equipment

Impact area =

-  Impact area
-  Free space

		
1	0,29m	17m ²



Point de Référence
Setting Out Point
Punto de referencia
Bezugspunkt



2



00h00



0.1m³



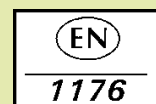
17m²



40kg



4kg



Proludic

0000-00-00