



2+



2



1,6m



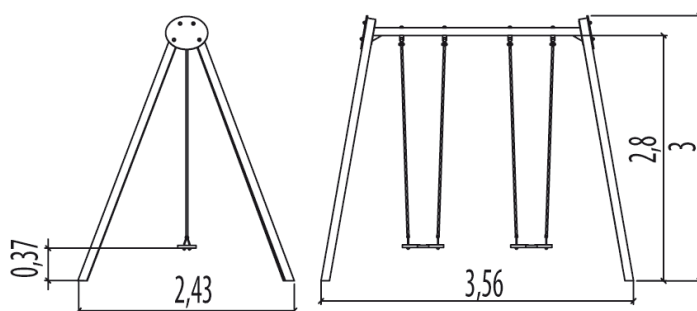
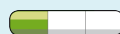
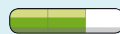
1 = 3,57m 2 = 2,43m 3 = 3m



Motor disability

Sensorial disabilities

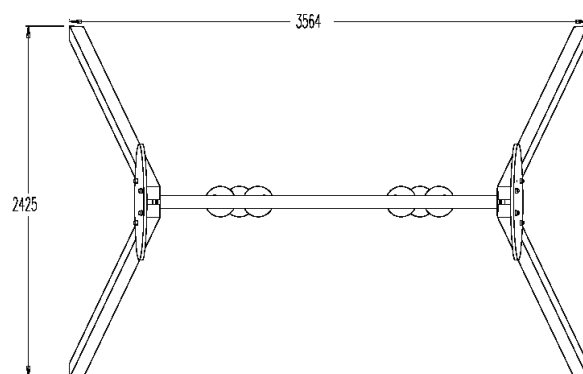
Learning disabilities



Play value : 1

swinging





## Installation of equipment

Impact area =



Impact area

Free space

Zone d'Impact Sol souple

Impact Area Wetpour

Area de Impacto

Fallraum bei synthetischen Fallschutz

Zone d'Impact Sol fluent

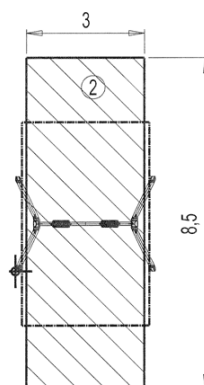
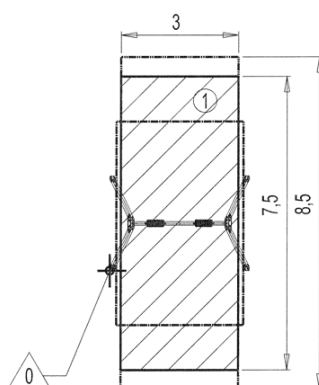
Impact Area Loose particle material

Arenero

Fallraum bei losen Bodenmaterial



Espace libre  
Free Space  
Espacio Libre  
Freiraum



Point de Référence  
Setting Out Point  
Punto de referencia  
Bezugspunkt



1	1,60m	22,5m <sup>2</sup>
2	1,60m	25,5m <sup>2</sup>



2



01h30



0.11m<sup>3</sup>



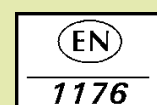
22.5m<sup>2</sup>



145kg



30kg



*Proludic*

2006-05-11