

# PentaBoo M - Product Specification



## Greenville PentaBoo M

The Pentagode M gives children the thrill and the experience of the height. The large dimension of the spacial net offers space for many children at once. The Pentagode M offers through its shape much room right up to the top, on which a Greenville Playhouse Boo is. The Greenville Playhouse Boo is surrounded with HDPE and bamboo panels, but offers through the gaps between the bamboo panels and windows many views.

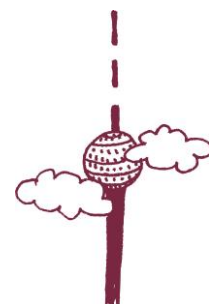
### PentaBoo M – At a glance.

Product Family:	<b>Greenville</b>	Number of Foundations:	<b>11 pc.</b>
Item Number:	<b>91.200.022</b>	Concrete Volume C20/C25:	<b>10.4 m<sup>3</sup> (367.3 ft<sup>3</sup>)</b>
Children's Age:	<b>5+</b>	Number of skilled installers required:	<b>3</b>
Fall Height (DIN EN 1176):	<b>0.92 m (3'-1")</b>	Installation Time without foundation:	<b>9 h</b>
Length x Width x Height:	<b>9.96 x 10.47 x 6.18 m (32'-9" x 34'-5" x 20'-4")</b>	Dimensions of largest part:	<b>Ø 0.133 m x 3.70 m (Ø 6" x 12'-2")</b>
Protective Surfacing Area (DIN EN 1176):	<b>12.96 x 13.47m</b>	Weight of heaviest part:	<b>210 kg (463 lbs)</b>
Protective Surfacing Area (ASTM 1487):	<b>13.64 x 14.15m (44'-9" x 46'-5"ft)</b>	Shipping Volume:	<b>Upon request</b>
Minimum space required DIN EN 1176:	<b>116.10 m<sup>2</sup></b>	Spare part guarantee:	<b>Lifelong</b>
Minimum space required ASTM 1487:	<b>132.07 m<sup>2</sup> (1421.6 ft<sup>2</sup>)</b>	Certificate according to DIN EN 1176:	<b>Z2 16 01 10256 253 TÜV Product Service</b>

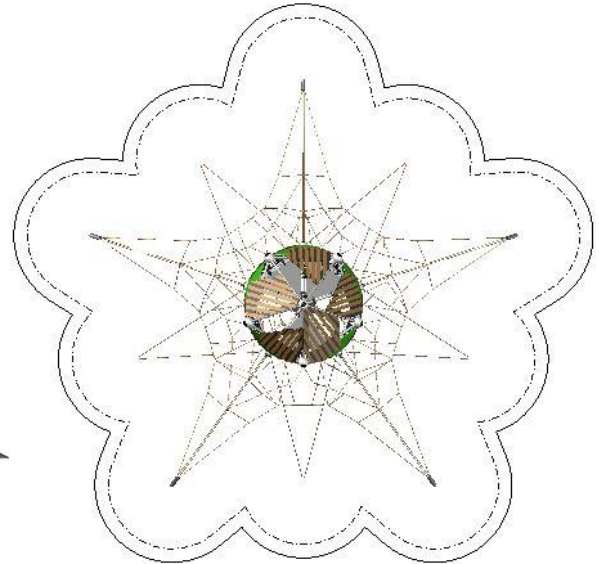
  
**Berliner**  
 Berliner Seilfabrik GmbH & Co.  
 Lengeder Straße 2/4  
 D-13407 Berlin

Tel. +49.(0)30.41 47 24-0  
 Fax +49.(0)30.41 47 24-33

info@berliner-seilfabrik.com  
 www.berliner-seilfabrik.com



# PentaBoo M - Product Specification



## Technical Data.

The following text can also be used for tenders.

- Pentagode M  
The central mast carries a Greenville Boo Playhouse
- Greenville Boo  
Boo-Tube framework with nodes, Bamboo- and HDPE Panels with windows

### Pentagode M:

#### **Central mast:**

Steel post 133 mm (5 1/4"), wall thickness 5 mm (3/16"), anti-corrosion treatment and color finish: sandblasting and solvent-free zinc-/ epoxy-/ polyester-process

#### **External bracing cables:**

Two parallel U-Rope-round strand ropes with steel cores; galvanized wires surround the core, external strands covered with non-abrasive UV-resistant Polyester-yarn; Ø 16 mm (5/8"); load to failure is 65 kN per cable

#### **Spacial netting:**

Rope crossing points are localized with durable, forged aluminum-alloy cloverleaf rings and forged aluminum-alloy ballknots (no plastic connections); in situ-replaceable rope strands (no special tools required). The Pentagode's tensioning system has been modified and guy ropes added

#### **Ropes:**

U-Rope®-round strand ropes with galvanized and covered wires; external strands with non-abrasive UV-resistant Polyester-yarn (no Polypropylene): Ø 18 mm (11/16")

### Boo:

#### **Tube framework:**

A combination of straight and bended stainless steel Framework®-tubes, Ø 60,3 mm (2 3/8"), material AISI304 (DIN 1.4301). The tubes are connected to build a space framework with a triangular footprint.

#### **Nodes:**

Framework®-aluminum ball connectors; Ø 250 mm (9'-13/16"); anti-corrosion treatment and color finish: sandblasting and solvent-free zinc-/ epoxy-/ polyester-process; incorporating an ASTEM TT net tensioning system; securely closed with durable EPDM- caps

#### **Bamboo panels:**

Bamboo strips 90 mm, (3'-1/2") mounted at a particle board made from HDPE, 19 mm (3/4") thickness, rounded edges, mounted with aluminum plate clamps to the tubes of the framework

