



Product Service

CERTIFICATE

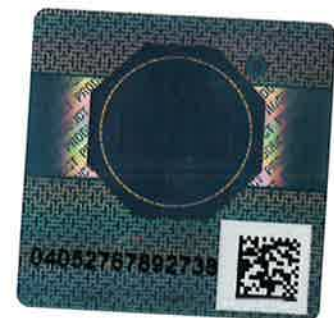
No. Z2 16 04 50646 062

Holder of Certificate: Norleg A/SVirkefeltet 1
8740 Brædstrup
DENMARK**Certification Mark:****Product: Climbing equipment**

The product was tested on a voluntary basis and complies with the essential requirements. The certification mark shown above can be affixed on the product. It is not permitted to alter the certification mark in any way. In addition the certification holder must not transfer the certificate to third parties. See also notes overleaf.

Test report no.: 713082177

Valid until: 2021-04-13



Date, 2016-04-15

Page 1 of 2

(Harald Bardowicks)



Product Service

CERTIFICATE**No. Z2 16 04 50646 062**

Model(s): LE20400, LE20404, LE20406, LE20408, LE20410, LE20416, LE20418, LE20420, LE20517, LE20518, LE20519, LE20522, LE20523, LE20526, LE20536, LE20542, LE20904, LE20920, LE20922, LE20928, LE20934, LE20936, LE20938, LE20944;

Parameters: Model: dimensions

LE20400: safety area 7.70 x 9.65 m
LE20404: safety area 7.00 x 8.60 m
LE20406: safety area 6.70 x 8.00 m
LE20408: safety area 5.90 x 7.40 m
LE20410: safety area 6.50 x 5.40 m
LE20416: safety area 6.30 x 7.60 m
LE20418: safety area 6.30 x 7.60 m
LE20420: safety area 6.70 x 9.30 m
LE20517: safety area 4.73 x 4.75 m
LE20518: safety area 4.15 x 6.70 m
LE20519: safety area 4.50 x 6.80 m
LE20522: safety area 4.90 x 6.80 m
LE20523: safety area 4.15 x 6.70 m
LE20526: safety area Ø5.30 m
LE20536: safety area 3.00 x 6.86 m
LE20542: safety area 3.70 x 5.00 m
LE20904: L/W 1.25 x 2.00 m
LE20920: safety area 4.45 x 7.00 m
LE20922: safety area 4.80 x 5.60 m
LE20928: safety area 7.80 x 5.80 m
LE20934: safety area 4.00 x 7.50 m
LE20936: safety area 5.30 x 8.30 m
LE20938: safety area Ø 12.50 m
LE20944: safety area 4.15 x 6.80 m

Material: robinia, steel

Tested according to: EN 1176-1:2008
EN 1176-11:2008

Production Facility(ies): 50646

Page 2 of 2