



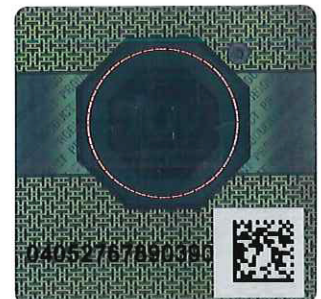
Product Service

CERTIFICATE

No. Z2 16 02 10256 238

Holder of Certificate: Berliner Seilfabrik GmbH & Co.Lengeder Straße 4
13407 Berlin
GERMANY**Certification Mark:****Product:** Seesaw

The product was tested on a voluntary basis and complies with the essential requirements. The certification mark shown above can be affixed on the product. It is not permitted to alter the certification mark in any way. In addition the certification holder must not transfer the certificate to third parties. See also notes overleaf.

Test report no.: 713075919-07**Valid until:** 2021-02-08**Date,** 2016-02-09
Page 1 of 3
(Jens Biesenack)



Product Service

CERTIFICATE

No. Z2 16 02 10256 238

Model(s):

ABAKUS.2.1 (UDB260801),
Number.0 (UDB260300), Number.1 (UDB260310),
Number.2 (UDB260320), Number.3 (UDB260330),
Number.4 (UDB260340), Number.5 (UDB260350),
Number.6 (UDB260360), Number.7 (UDB260370),
Number.8 (UDB260380), Number.9 (UDB260390)

Parameters:

ABAKUS.2.1 (UDB260801):

Dimensions (L x W x H): 4.0 x 1.4 x 1.6 m
Safety area: 6.0 x 3.4 m
Max. drop height: 1.5 m

Seesaw with two user stations. The device consists of
bended stainless steel tubes and HDPE plates.

Number.0 (UDB260300):

Dimensions (L x W x H): 0.6 x 0.7 x 1.5 m
Safety area: 3.2 x 3.2 m
Max. drop height: 0.4 m

Number.1 (UDB260310)

Dimensions (L x W x H): 0.6 x 0.5 x 1.5 m
Safety area: 3.2 x 3.2 m
Max. drop height: 0.4 m

Number.2 (UDB260320):

Dimensions (L x W x H): 0.6 x 0.6 x 1.8 m
Safety area: 3.2 x 3.2 m
Max. drop height: 1.0 m

Number.3 (UDB260330):

Dimensions (L x W x H): 0.6 x 0.7 x 1.5 m
Safety area: 3.2 x 3.2 m
Max. drop height: 1.0 m

Number.4 (UDB260340):

Dimensions (L x W x H): 0.6 x 0.7 x 1.5 m
Safety area: 3.2 x 3.2 m
Max. drop height: 0.84 m

Further Parameters see attachment.

Tested according to:

DIN EN 1176-1:2008
EN 1176-1:2008
DIN EN 1176-6:2008
EN 1176-6:2008

Production Facility(ies):

10256

Page 2 of 3



Number.5 (UDB260350):
Dimensions (L x W x H): 0.6 x 0.7 x 1.5 m
Safety area: 3.2 x 3.2 m
Max. drop height: 0.7 m

Number.6 (UDB260360):
Dimensions (L x W x H): 0.6 x 0.7 x 1.5 m
Safety area: 3.2 x 3.2 m
Max. drop height: 0.98 m

Number.7 (UDB260370):
Dimensions (L x W x H): 0.6 x 0.6 x 1.5 m
Safety area: 3.2 x 3.2 m
Max. drop height: 0.4 m

Number.8 (UDB260380):
Dimensions (L x W x H): 0.6 x 0.7 x 1.5 m
Safety area: 3.2 x 3.2 m
Max. drop height: 0.4 m

Number.9 (UDB260390)
Dimensions (L x W x H): 0.6 x 0.7 x 1.5 m
Safety area: 3.2 x 3.2 m
Max. drop height: 0.85 m

Rocking equipment made of HDPE plates and stainless steel tubes,
which have been bent in the form of numbers.