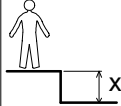
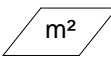




ProLudic

N°		
1	0.6 m	26 m ²

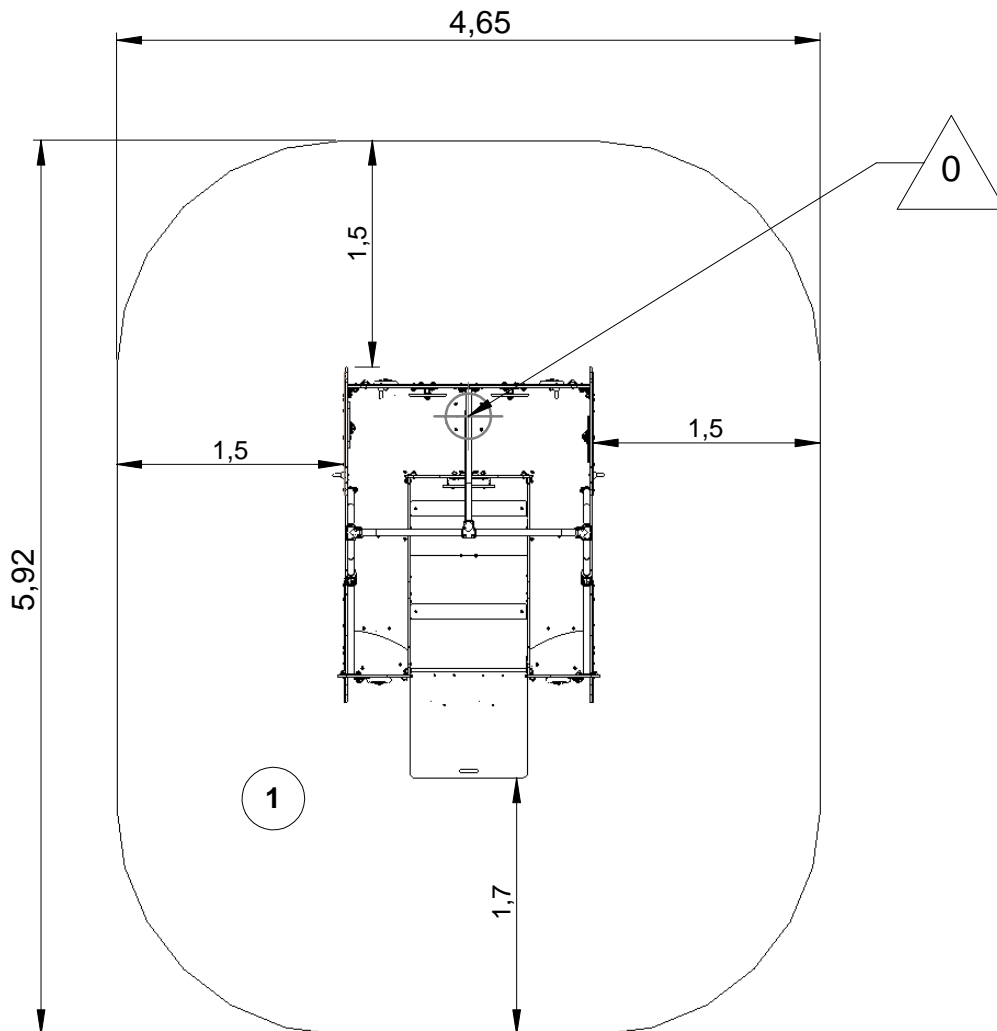
— Zone d'impact
Impact area
Area de impacto
Fallraum
Valzone

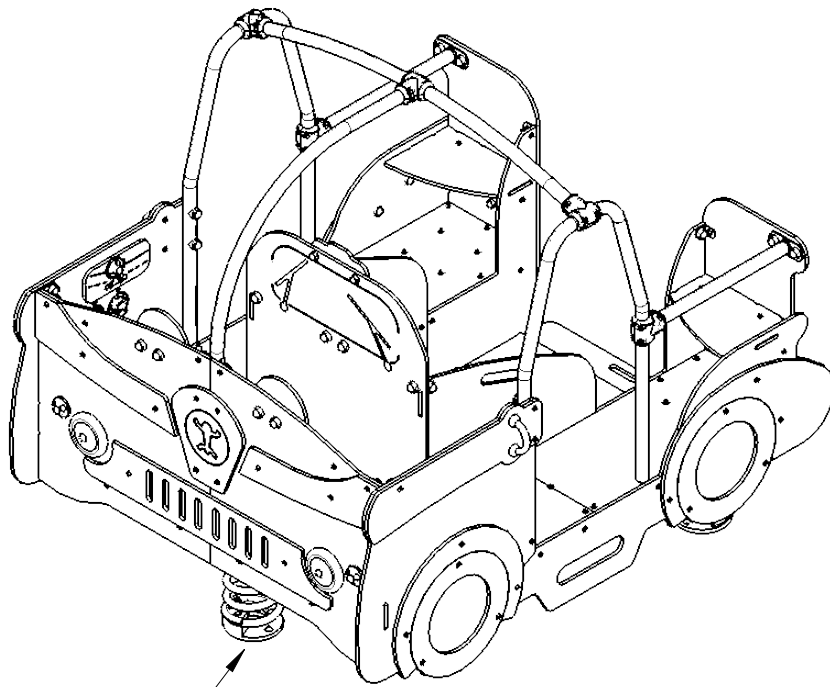


Point de référence
Setting out point
Punto de referencia
Bezugspunkt
Referentiepunt

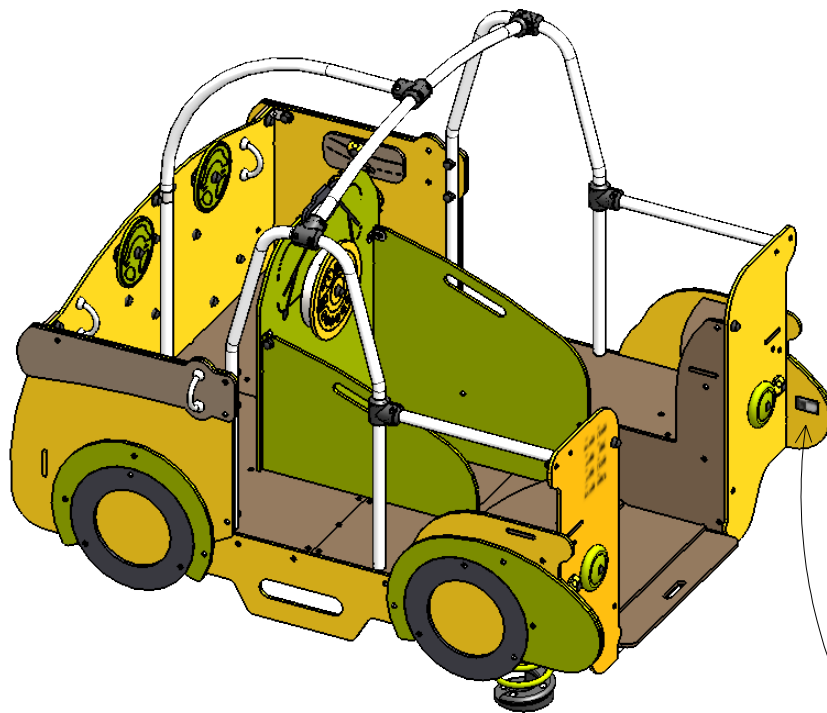
- - - Espace libre
Free space
Espacio libre
Freiraum
Vrije ruimte

EN1176-1:2017
EN1176-6:2017





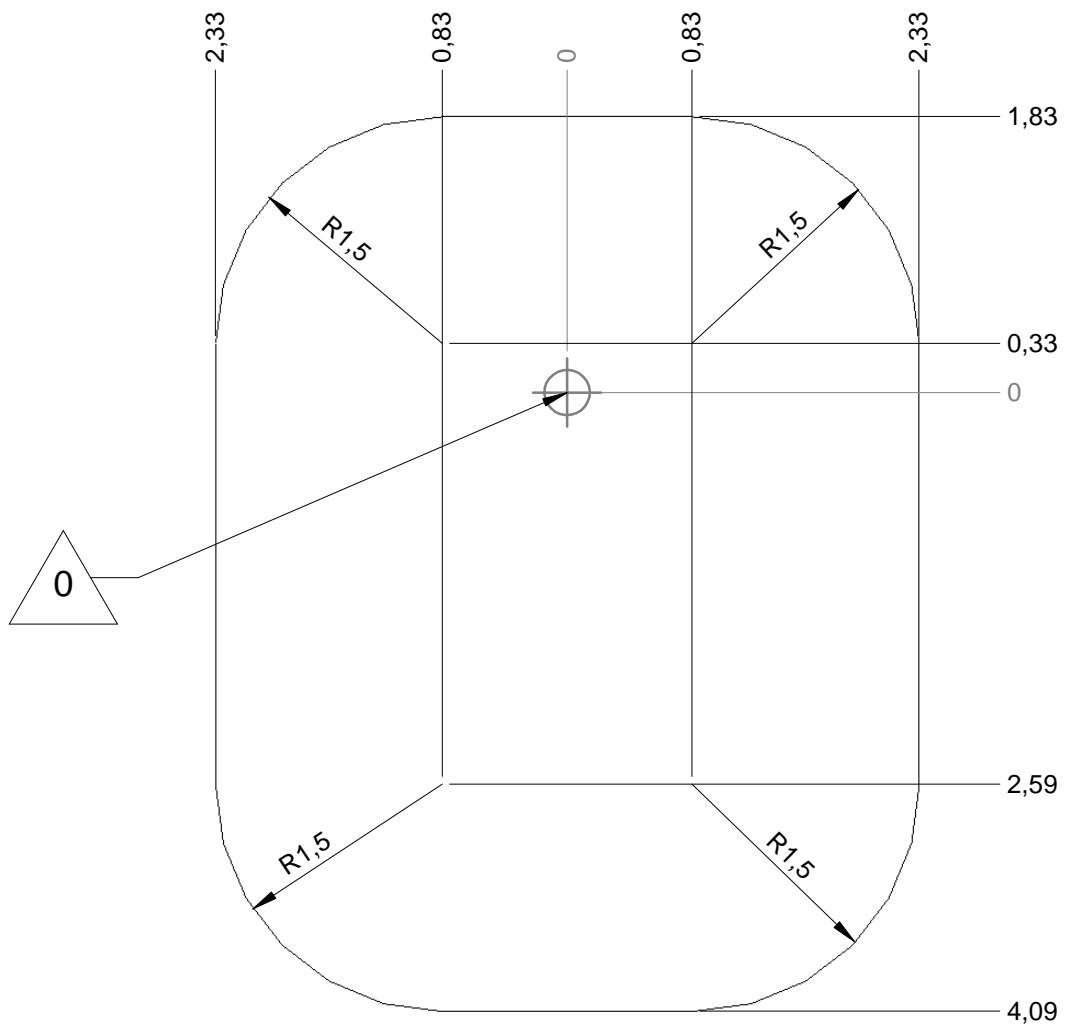
0



LA000

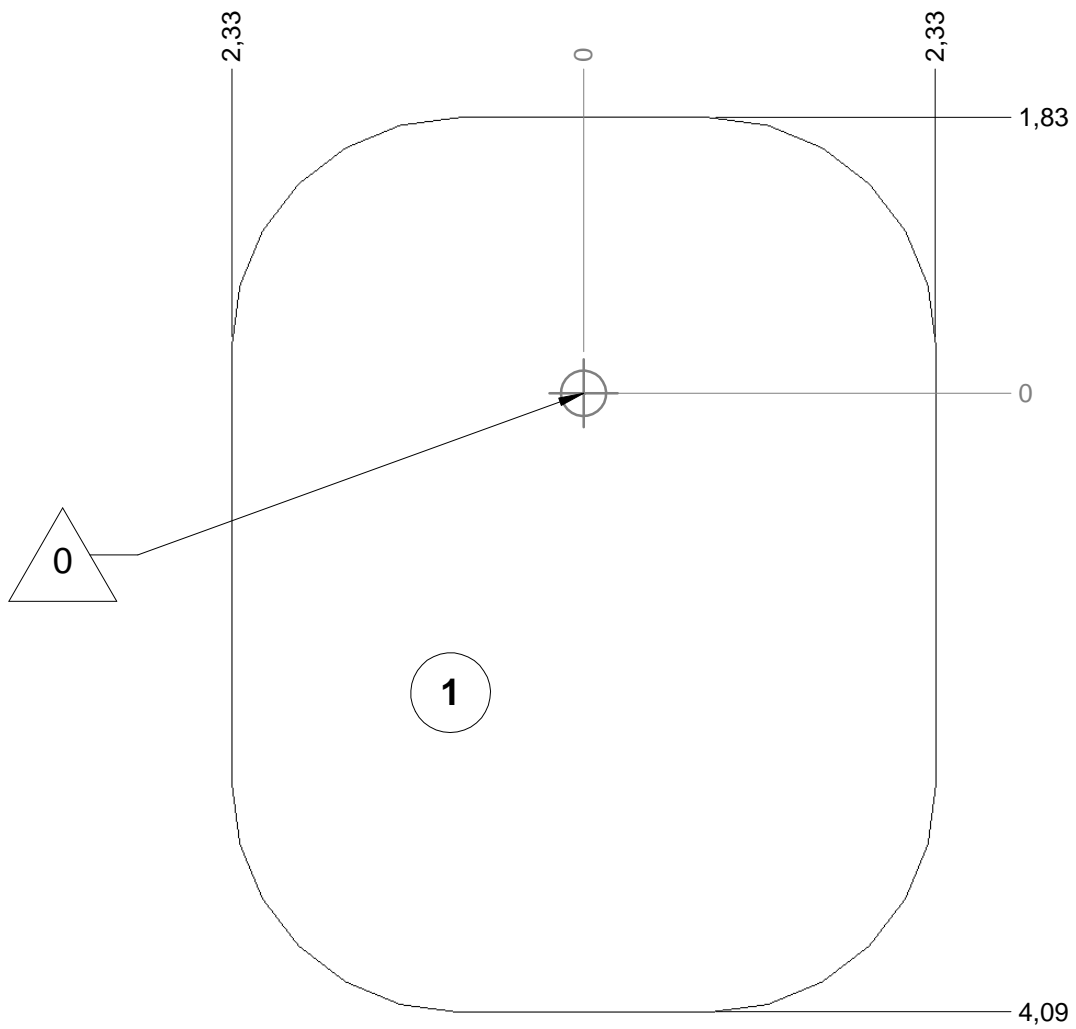
— Zone d'impact
Impact area
Area de impacto
Fallraum
Valzone

26 m²



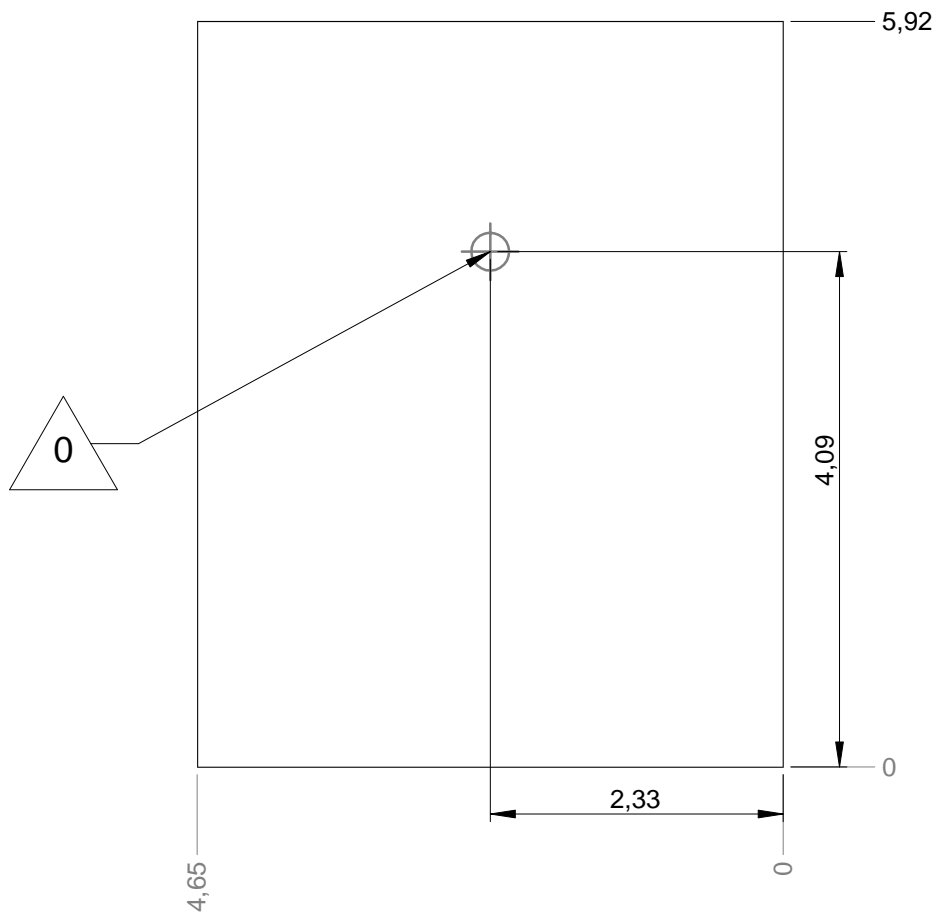
— Sol souple
Wetpour
Caucho continuo
Synthetischer Fallschutz
Gietvloer

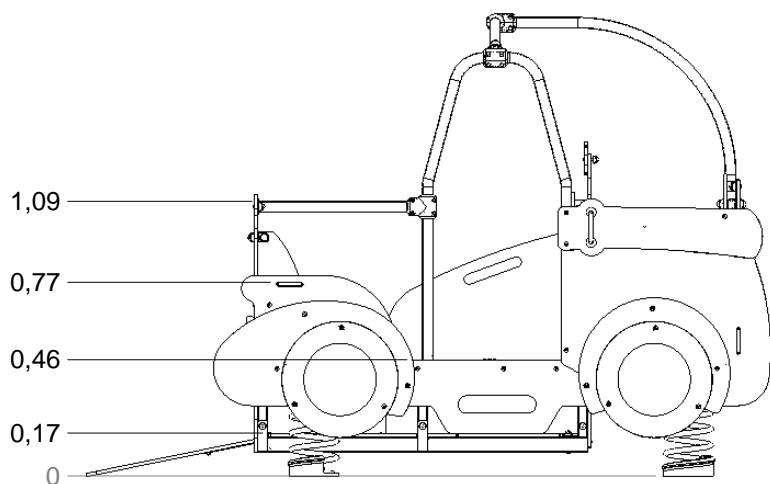
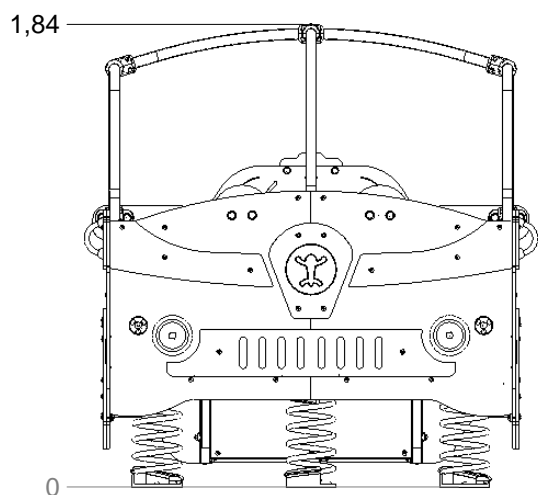
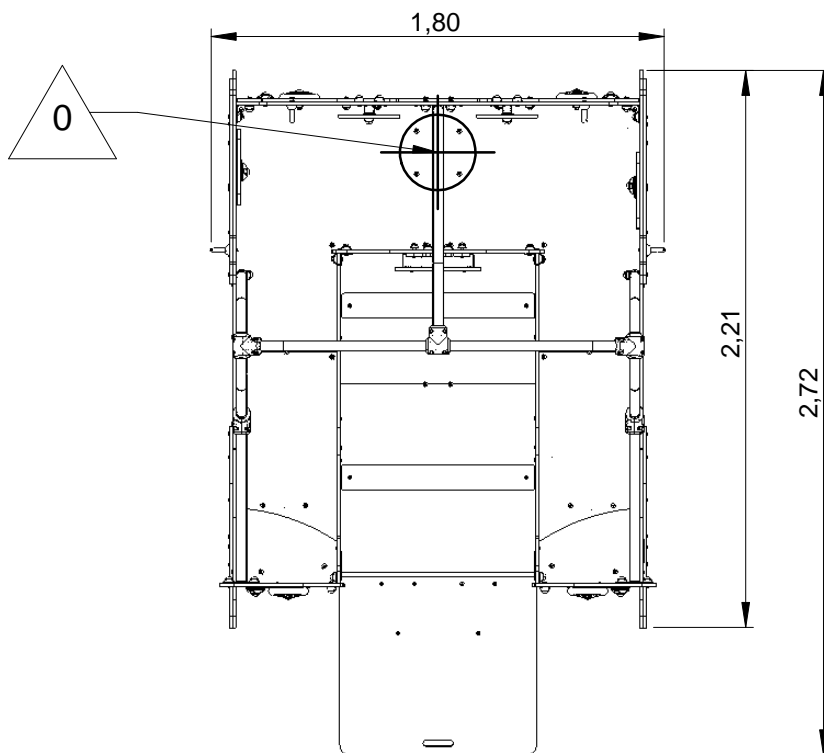
26 m²



— Dalle béton
Concrete pad
Solera de hormigon
Beton Bodenplatte
Betonnen bodemplaat

22 m
27.5 m²

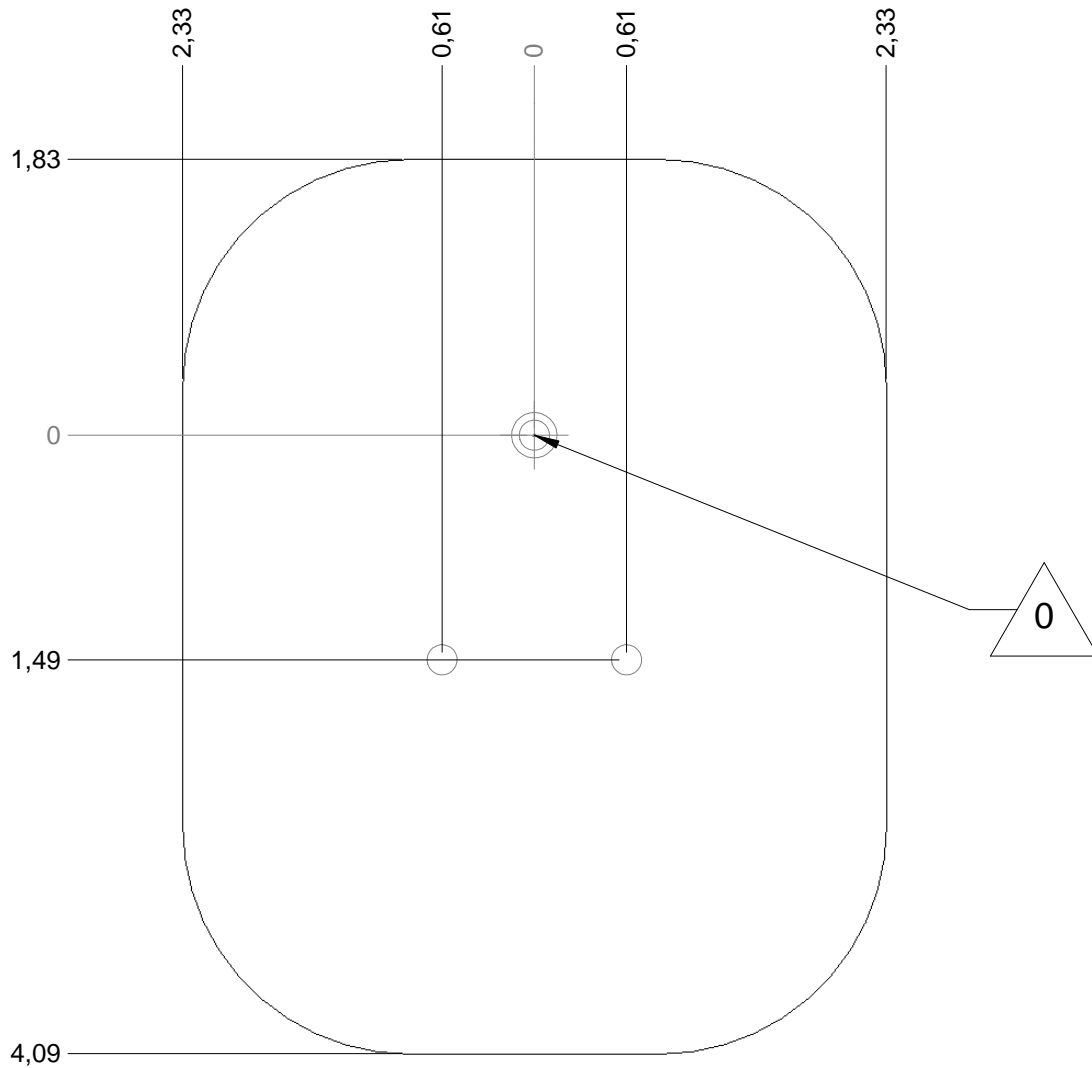




J952 B

Proludic

Implantation
Footing plan
Implantación
Fundamentplan
Funderingstekening



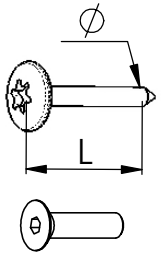
x2



8H

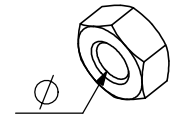
RD14M10



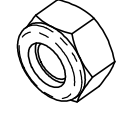


VBT 6 x 30
 \varnothing L (mm)

VFHC



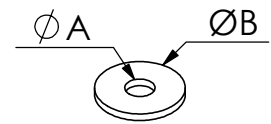
VEC M10
 \varnothing



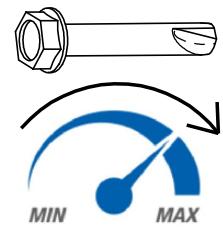
VEF



VEB


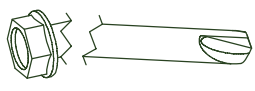


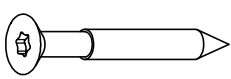
VR6x18
 $\varnothing A$ $\varnothing B$



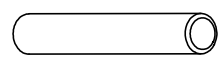
1000 - 1800 RPM
 Vitesse de rotation
 Rotation speed

< 14 N.m
 Couple de rupture
 Breakage torque

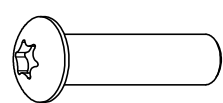





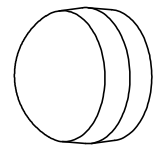
VWT



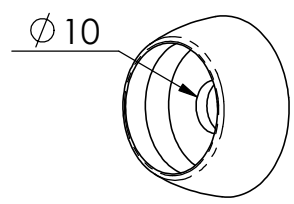
VGC



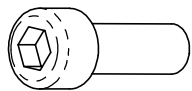
VCBHC



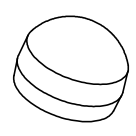
M10 440N



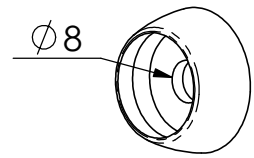
M10 310 N



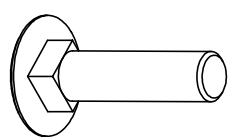
VBTR



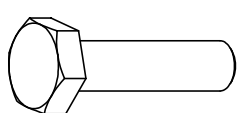
M8440N



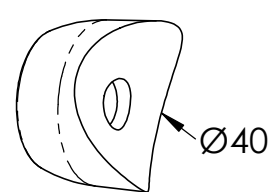
M8310N



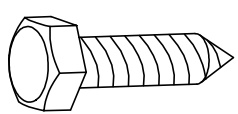
VTRCC



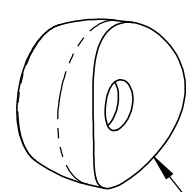
VTH



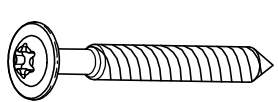
MI2503



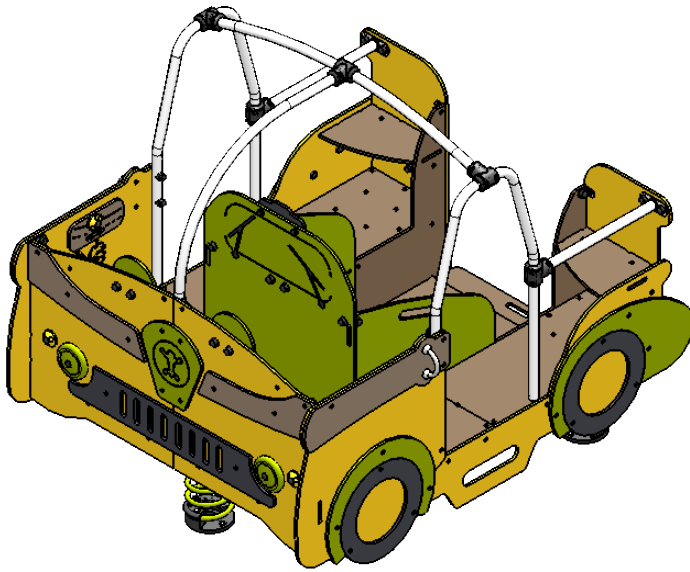
VTF



MI2701



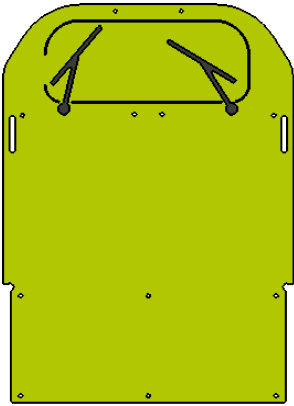
VBT



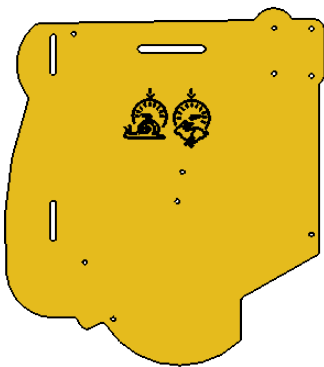
Réf	Qté
LI1130	1
LI1131	2
LI1132	2
LI1133	2
LI2610	1
LI4830	4
M8310N	8
M8440N	8

Réf	Qté	Réf	Qté
		M10310N	164
ET95010J	1	M10440N	180
ET95011J	1	MI0002	1
ET95012J	2	MI025VX	4
ET95013J	2	MI323J	6
ET95014PL	1	MI800	4
ET95015PL	1	MI2502N	10
ET95016GA	4	MI2503N	6
ET95017VX	2	P10	4
ET95018J	2	P13	8
ET95019PL	2	RD14M10	12
ET95020VX	1	U855VX	3
ET95021GA	1	U1200	1
ET95022J-G1	1	U1201	1
ET95022J	1	U1202	2
ET95023VX-G1	1	VCBHCM6x25I	20
ET95024GA	1	VCBHCM8x20I	2
ET95025VX	2	VCBHCM8x30I	2
ET95026PL-G1	2	VCBHCM8x40I	4
ET95029VX	2	VCBHCM10x30I	28
FT95030	1	VCBHCM10x40I	38
FT95031	1	VCBHCM10x50I	4
FT95032	2	VCBHCM10x60I	6
FT95033	2	VCBHCM10x70I	75
FT95034	2	VCBHCM10x80I	10
FT95035	2	VEBM6	20
FT95036	2	VECM10	4
LA000	1	VEDM8	4
LG871	3	VEFM6	4
LI1003	1	VEFM8	4
LI1004	2	VEFM10	159
LI1005	2	VGC8x55I	5
LI1008	1	VR8x18	2
LI1009	1	VR10x22	2
LI1102	1	VR10x40	8
LI1103	1	VTH6x60	4
LI1104	1	VTH10x60	4
LI1105	1	VTH10x80	5

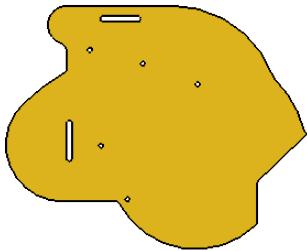
1x ET95023VX-G1



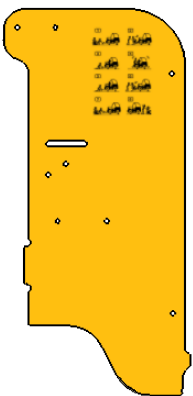
1x ET95011J



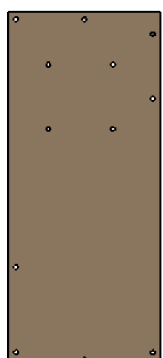
2x ET95013J



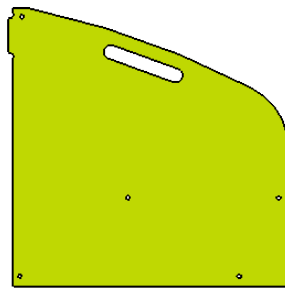
1x ET95022J-G1



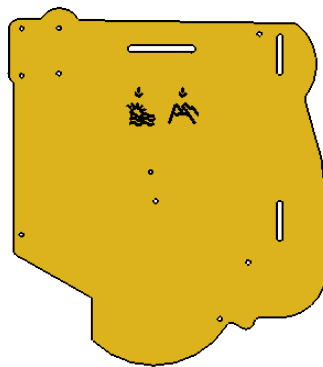
2x FT95035



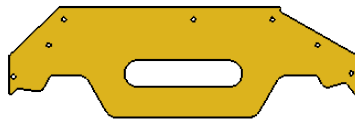
2x ET95025VX



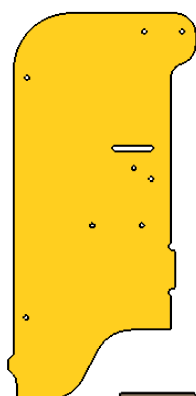
1x ET95010J



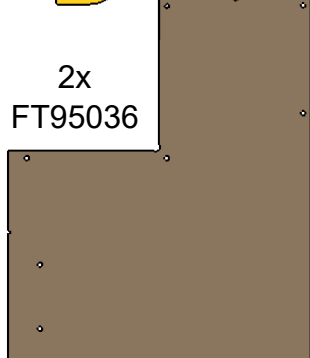
2x ET95012J



1x ET95022J



2x FT95036



1x ET95024GA



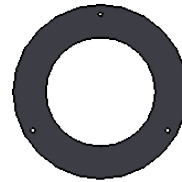
2x ET95026PL-G1



1x ET95020VX



4x ET95016GA



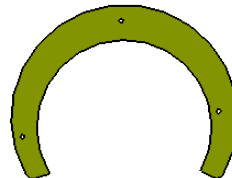
1x ET95021GA



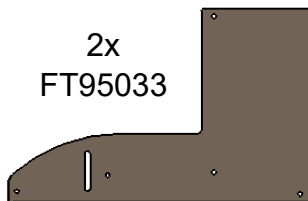
2x FT95034



2x ET95029VX



2x FT95033



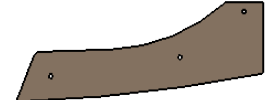
1x ET95014PL



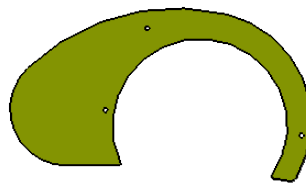
1x ET95015PL



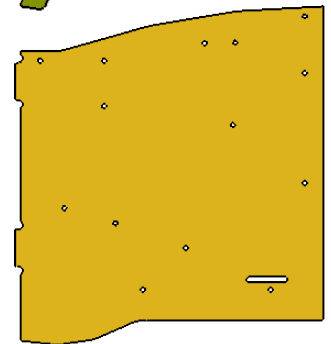
2x ET95019PL



2x ET95017VX



2x ET95018J



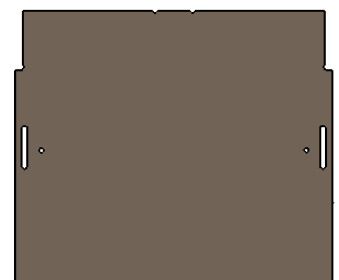
2x FT95032

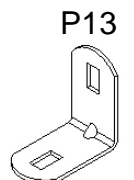
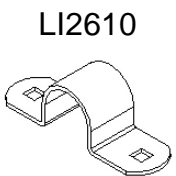
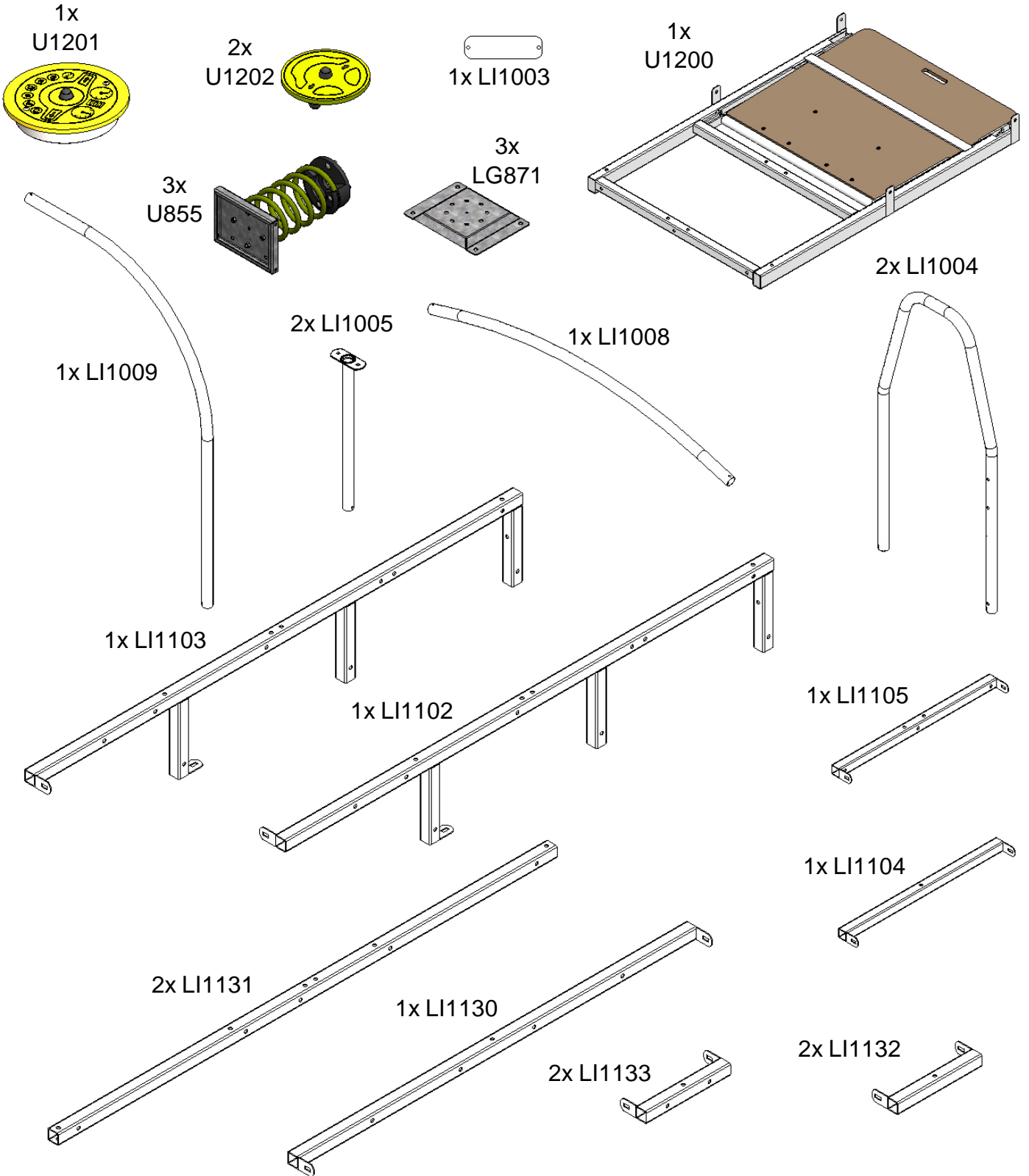


1x FT95030

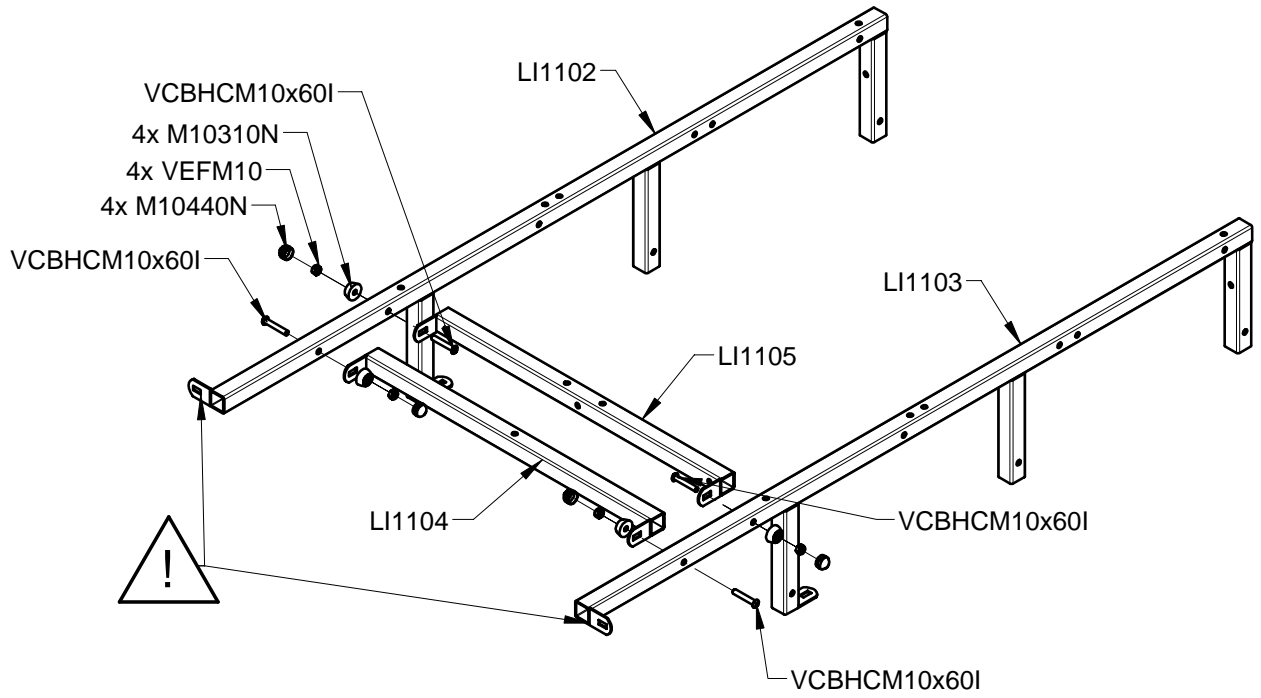


1x FT95031

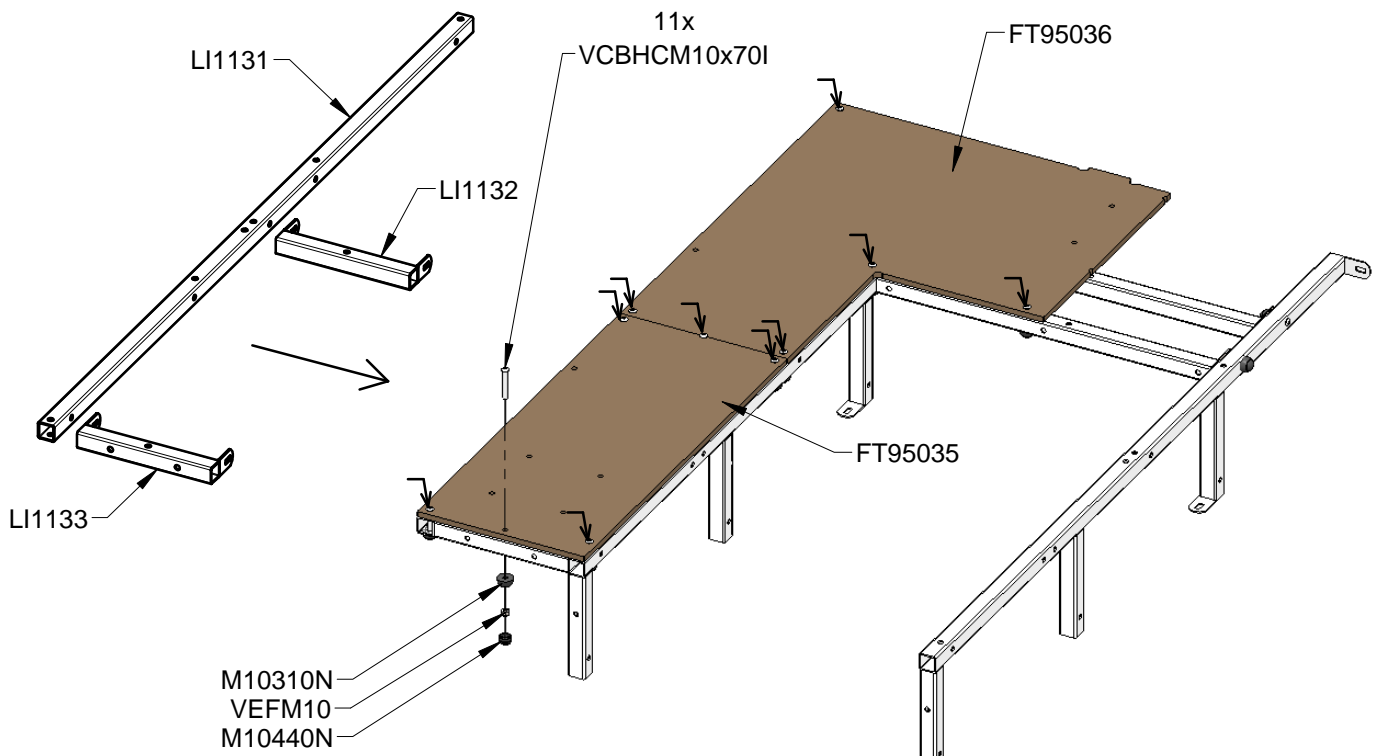




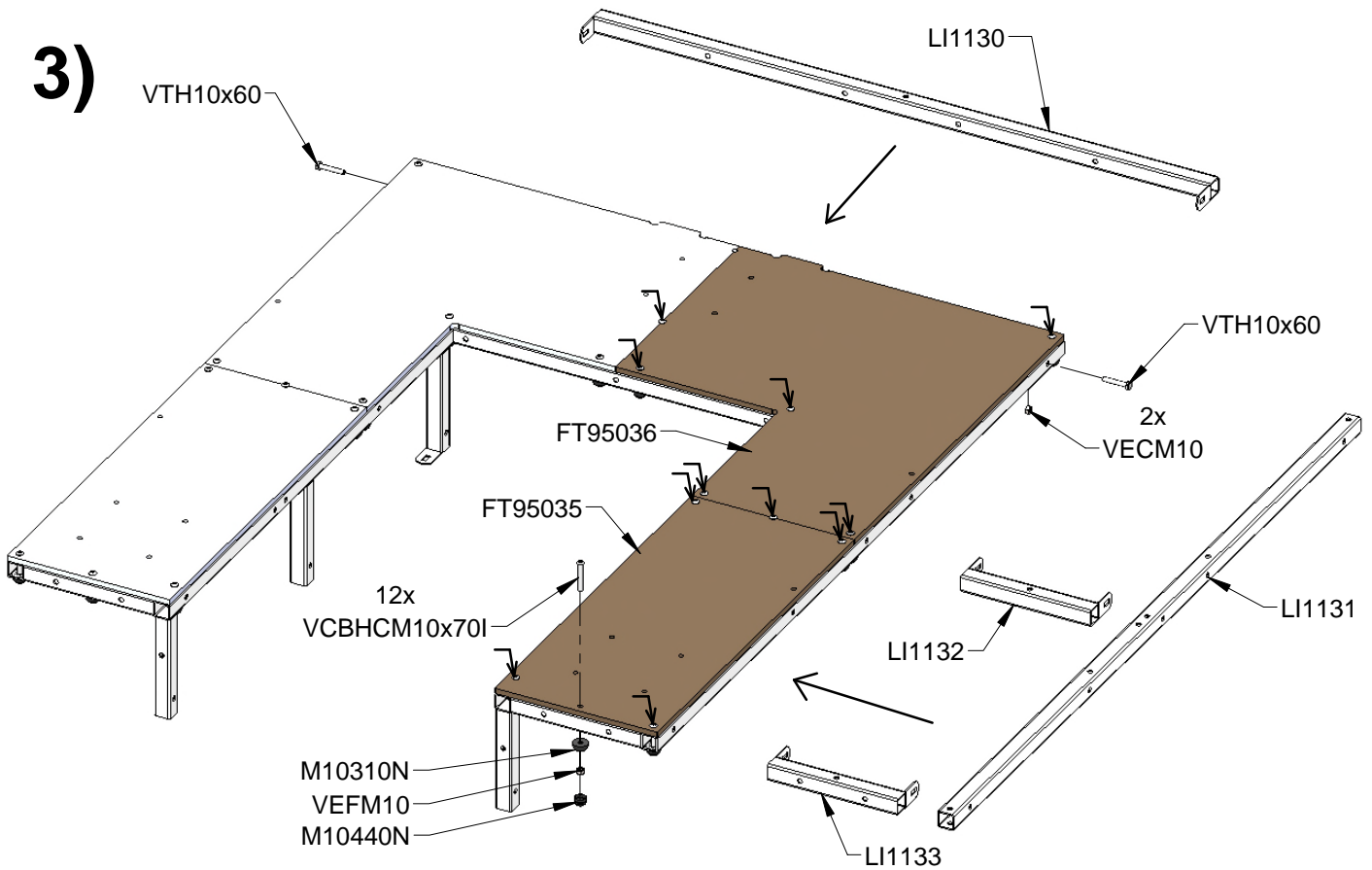
1)



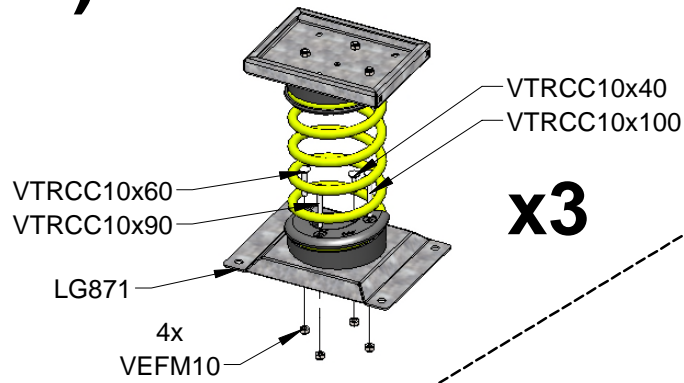
2)



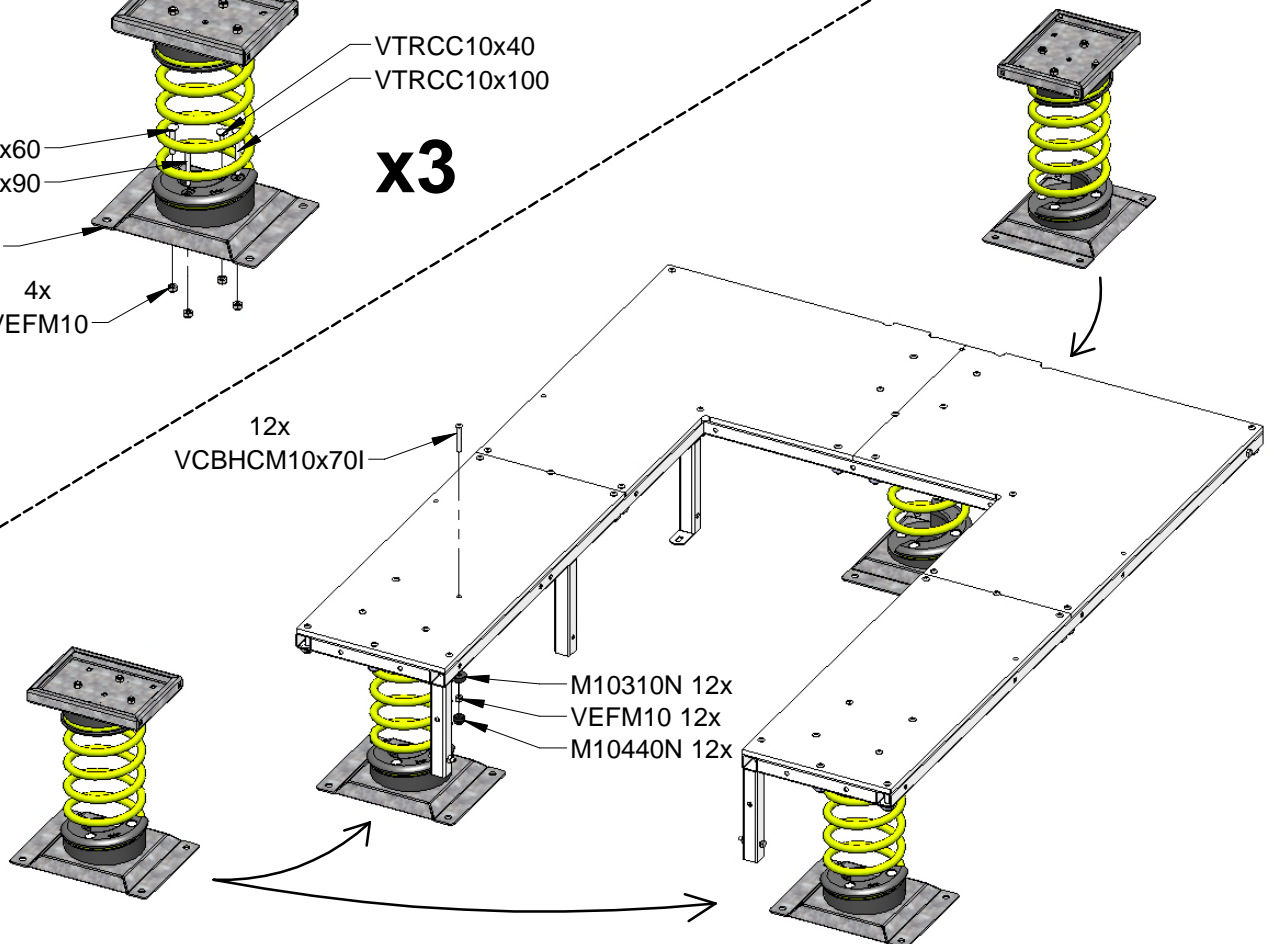
3)



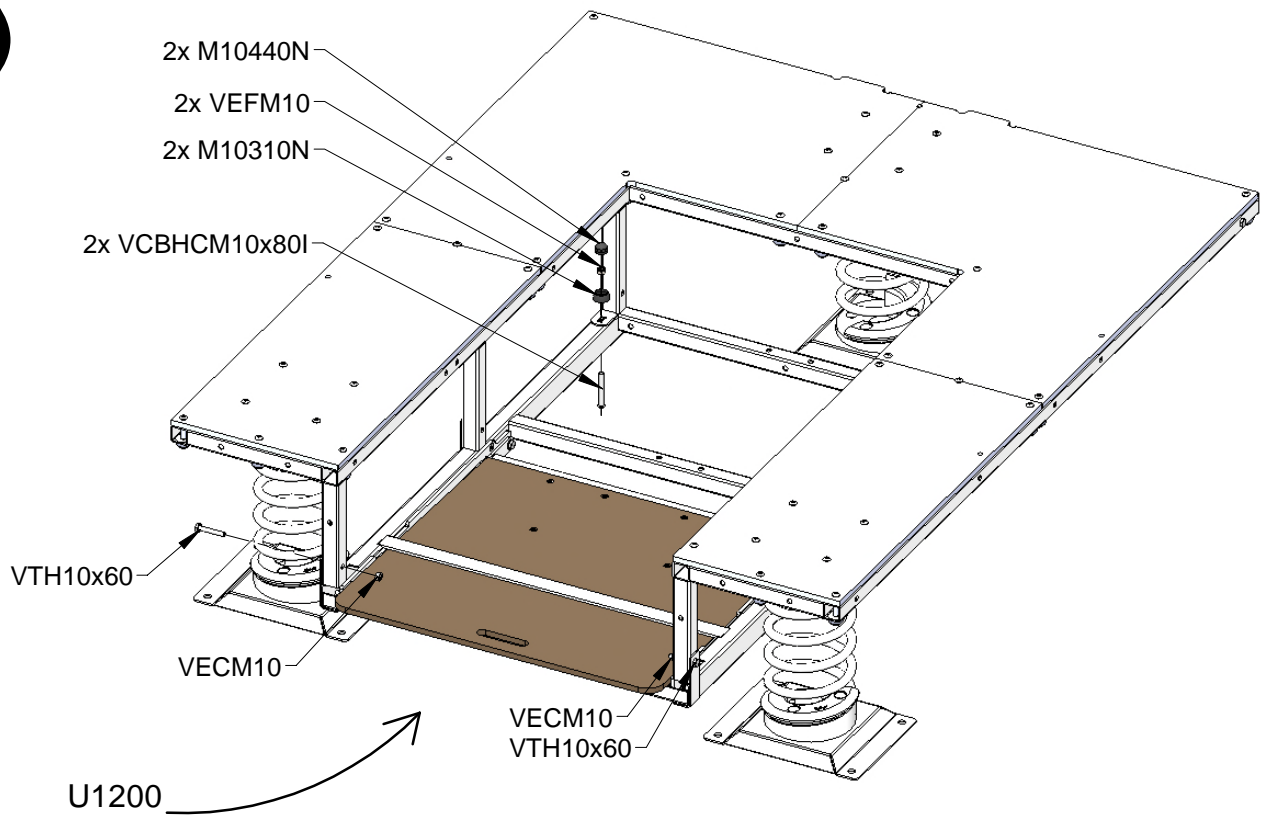
4)



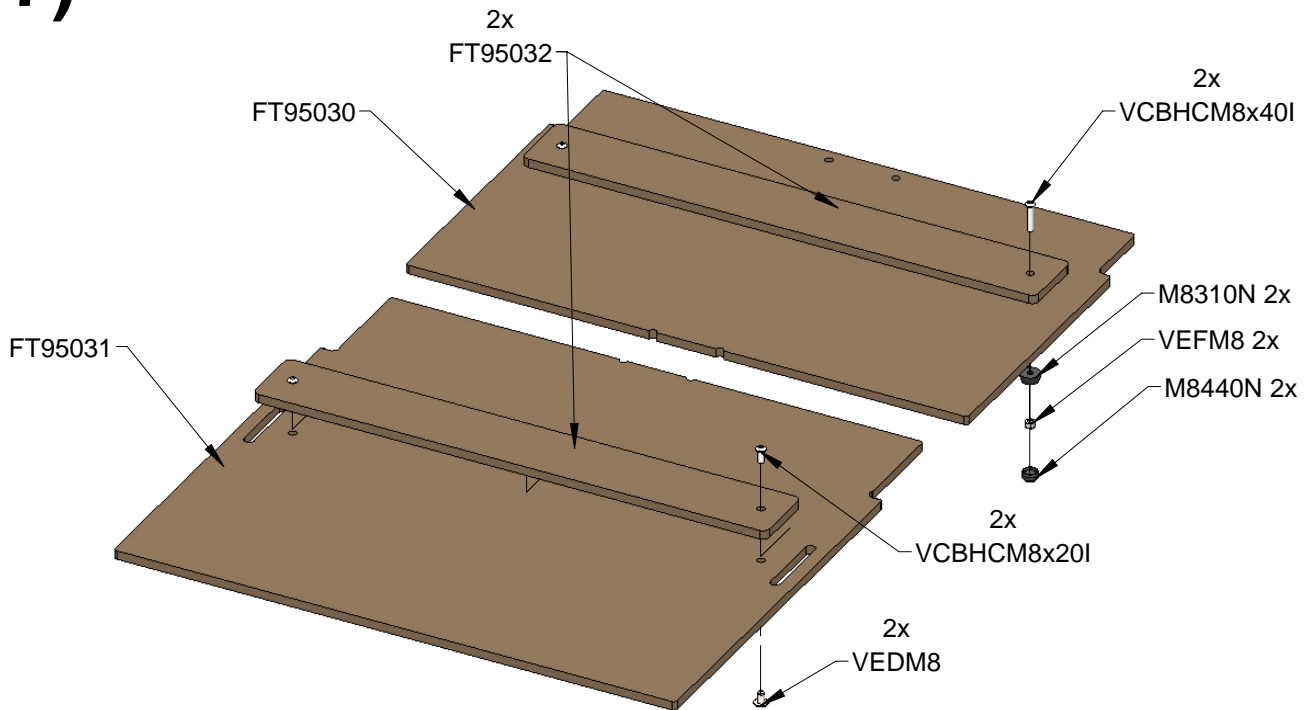
5)



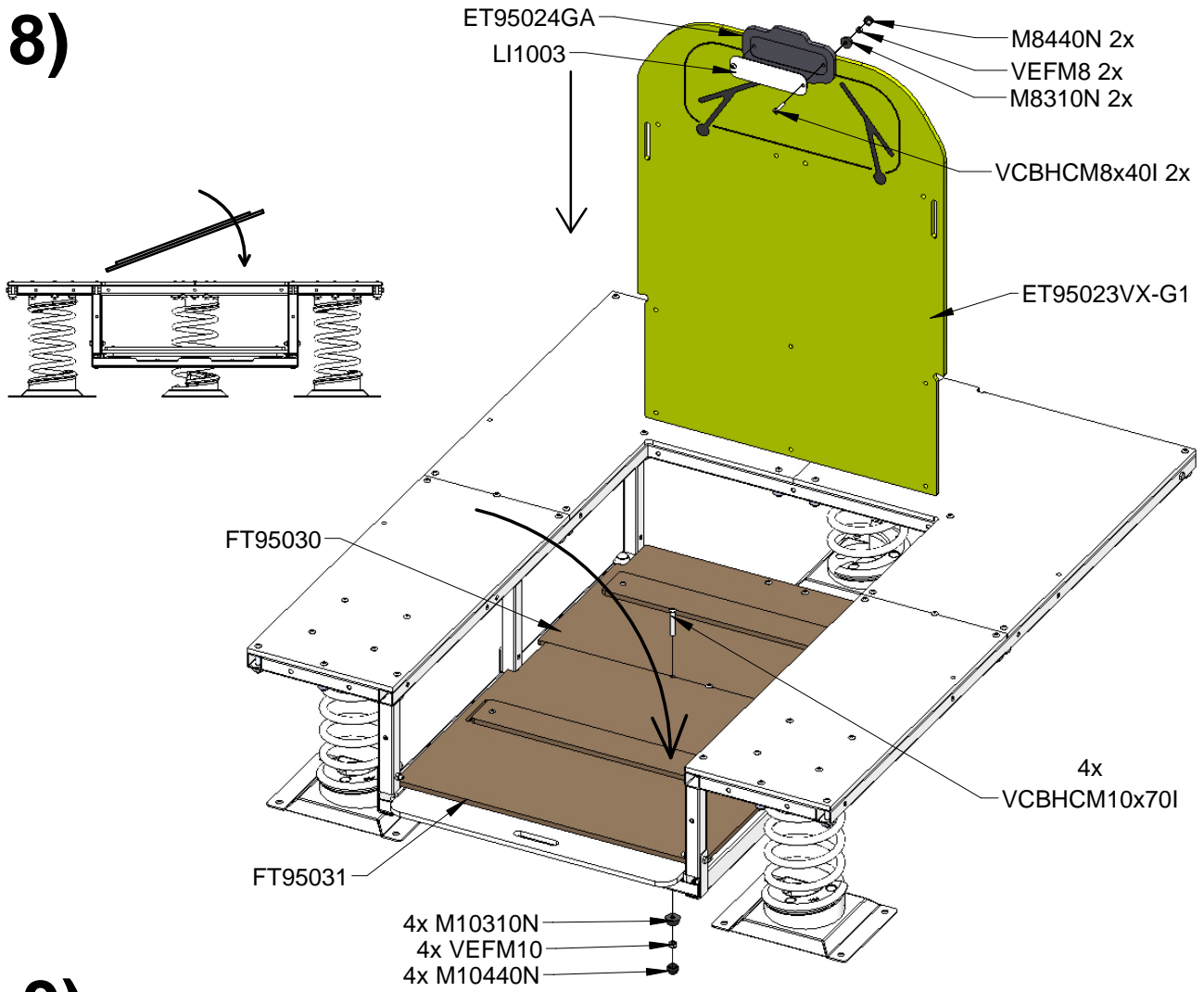
6)



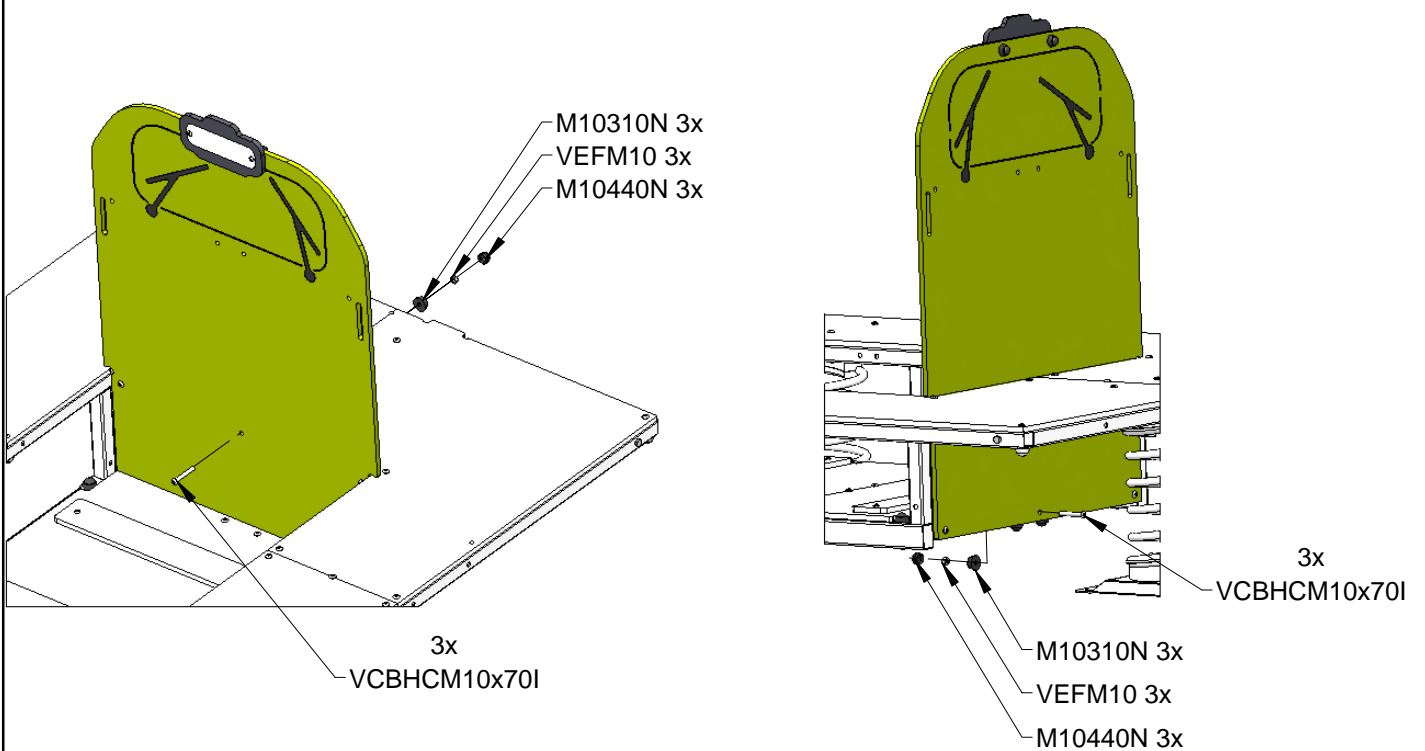
7)



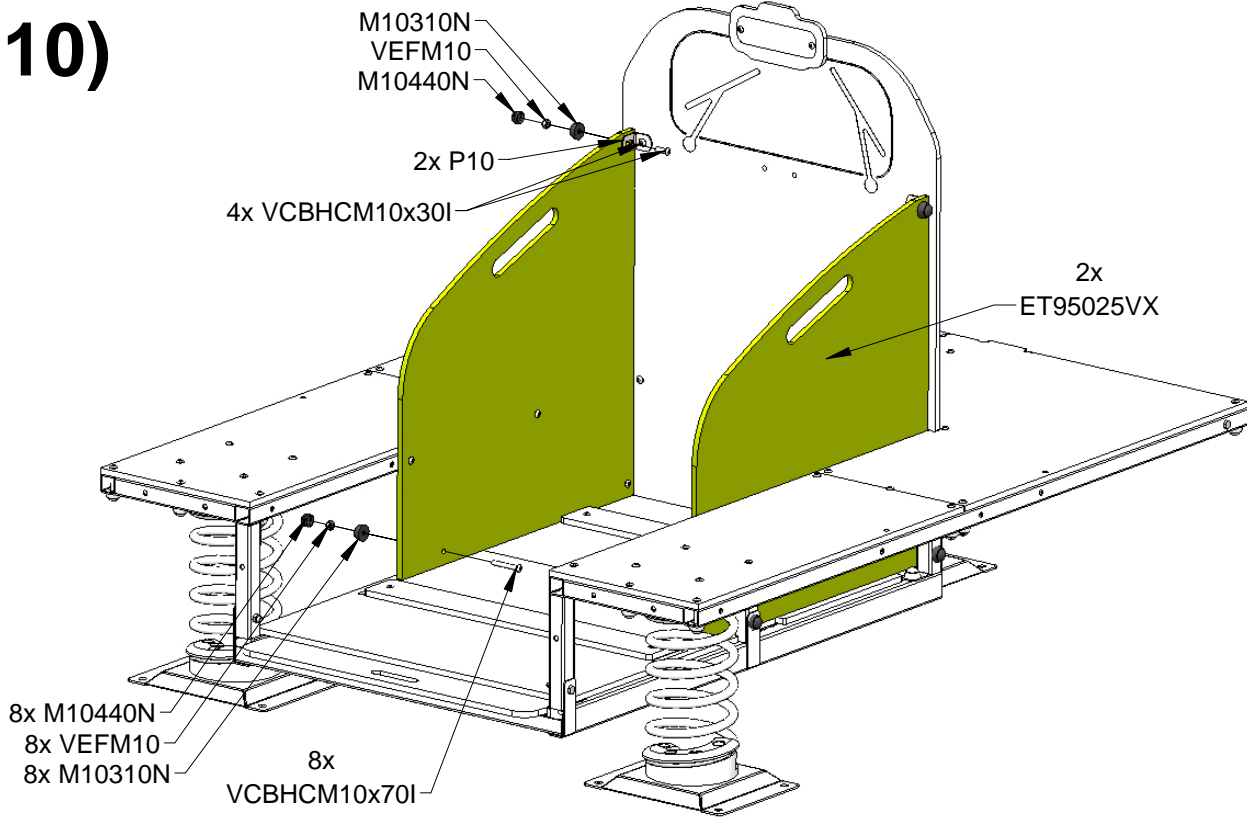
8)



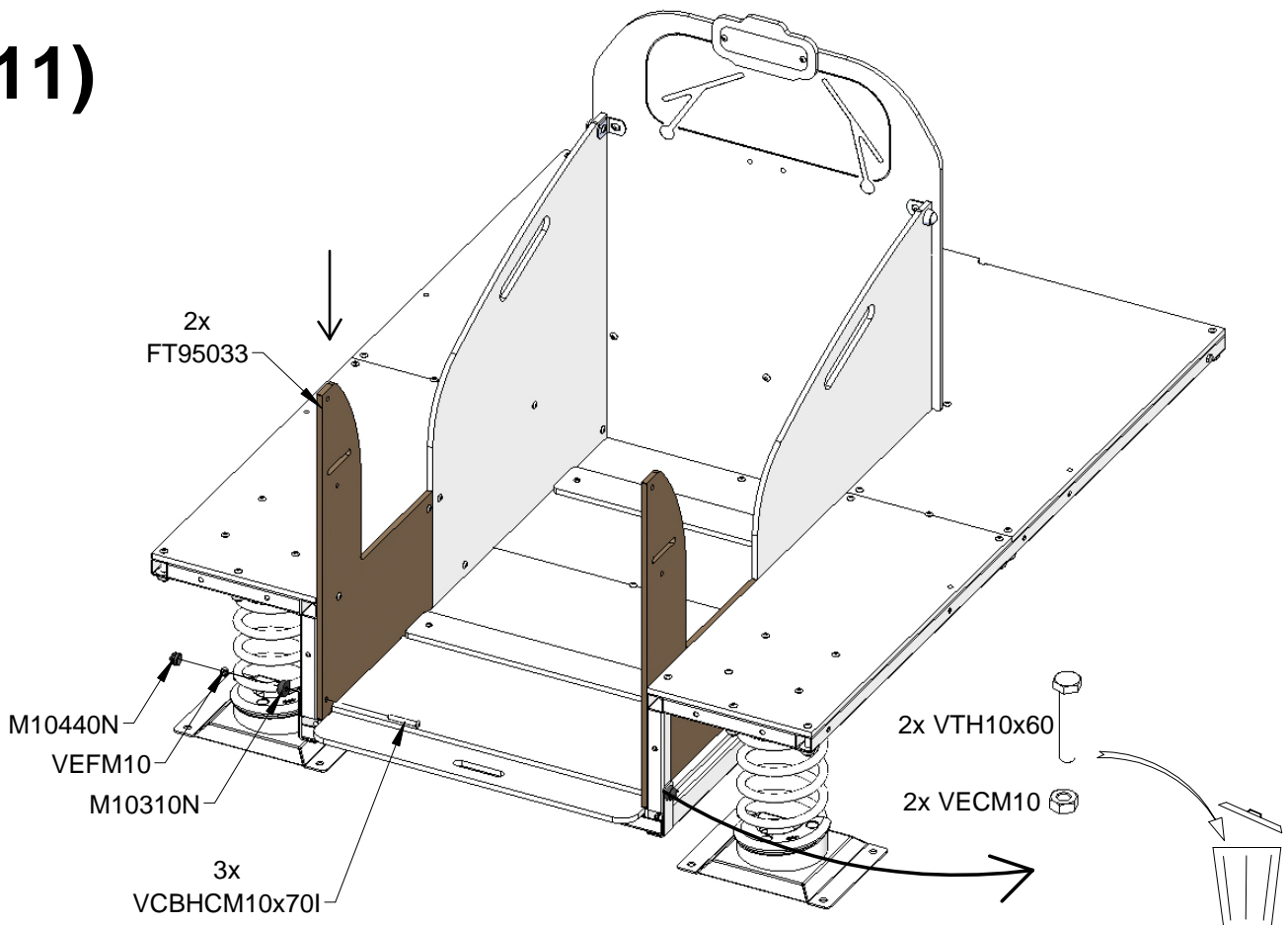
9)



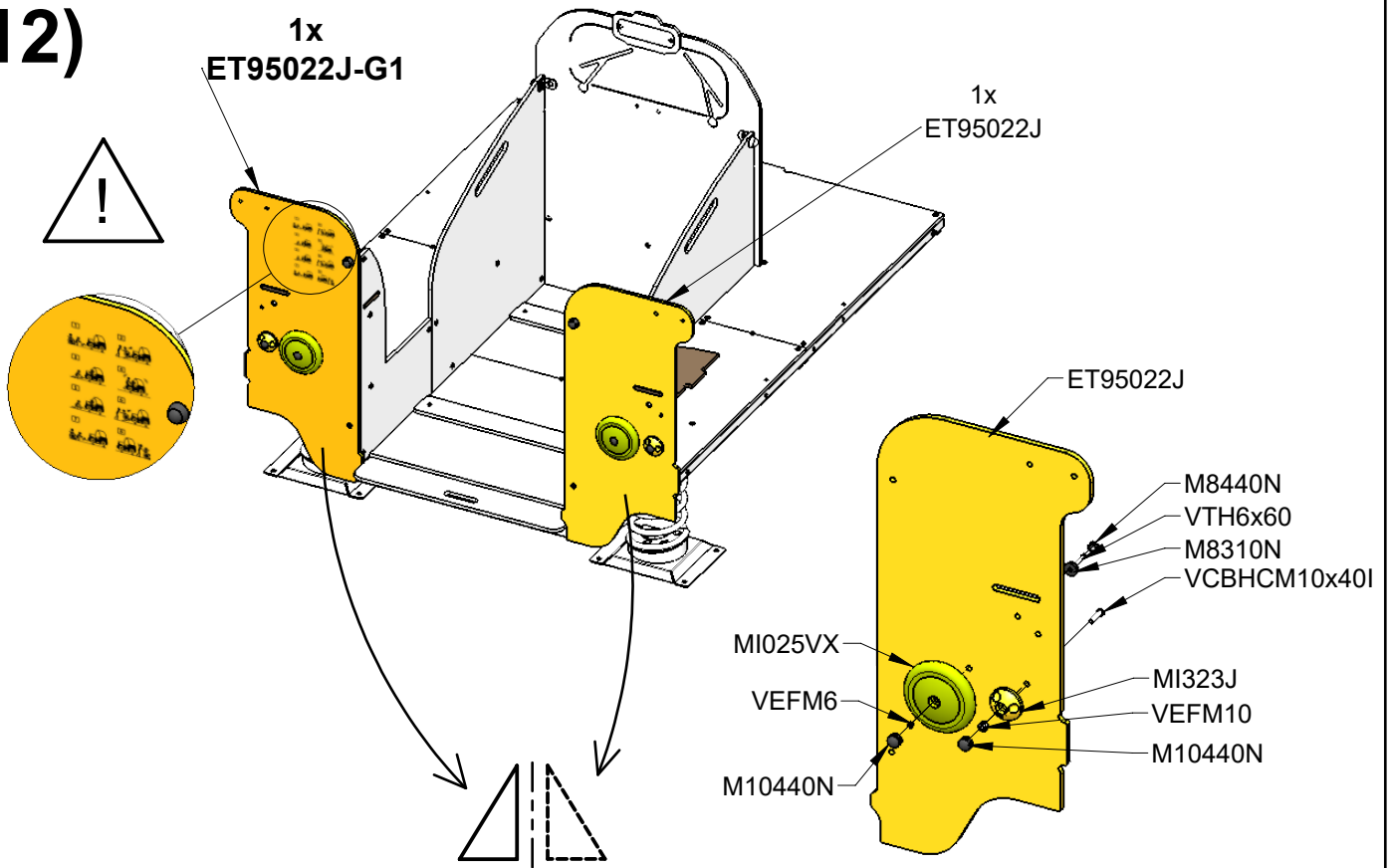
10)



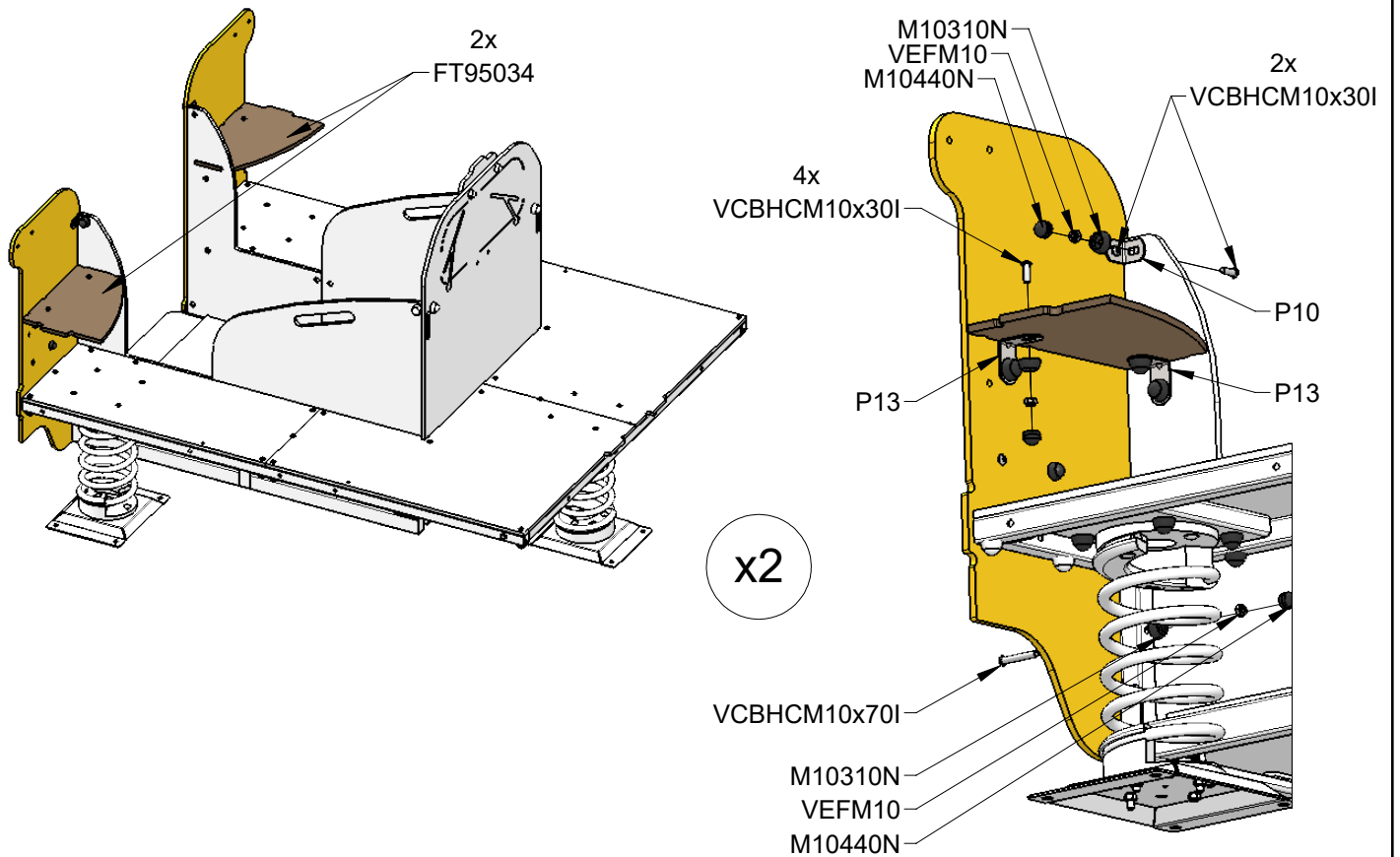
11)



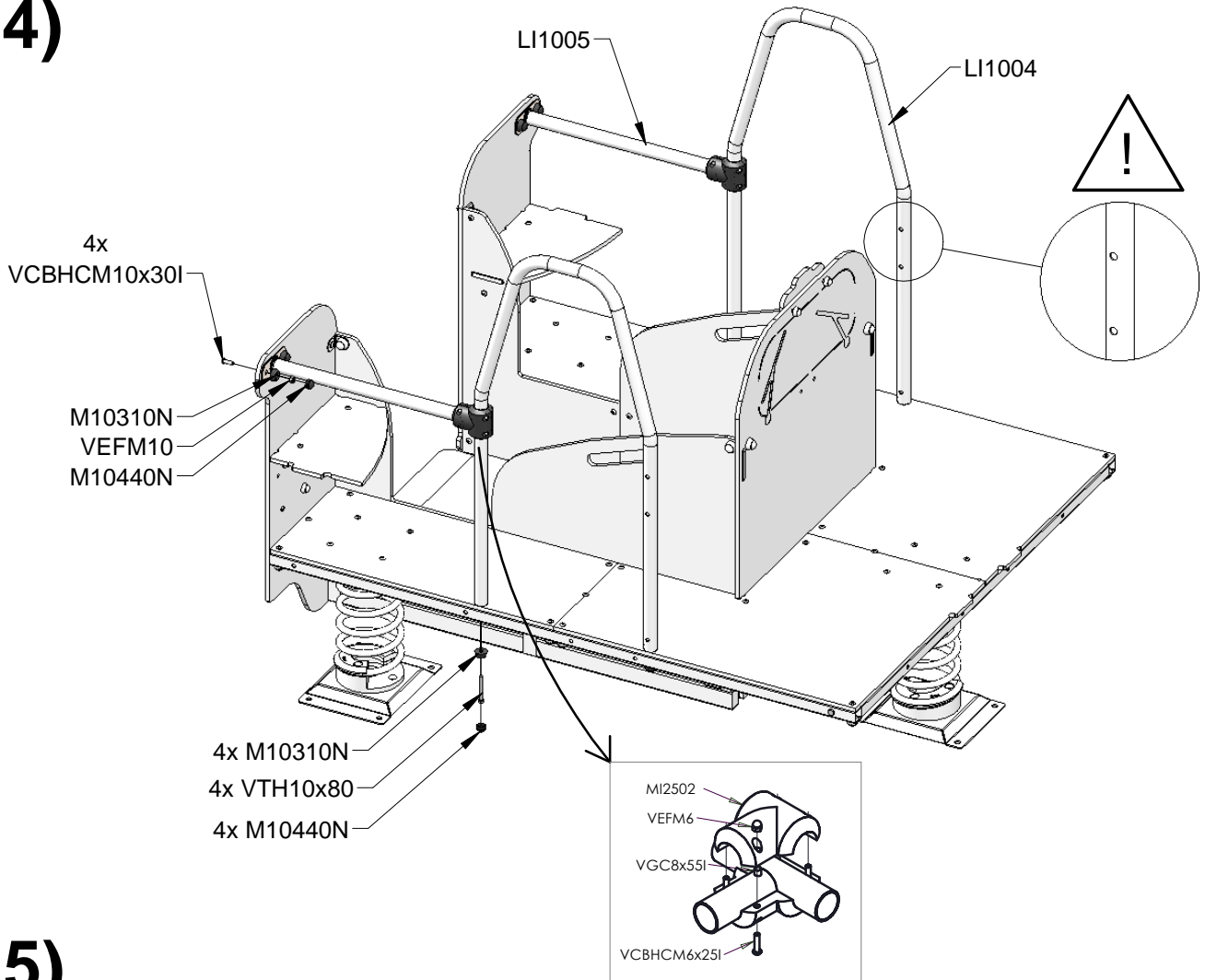
12)



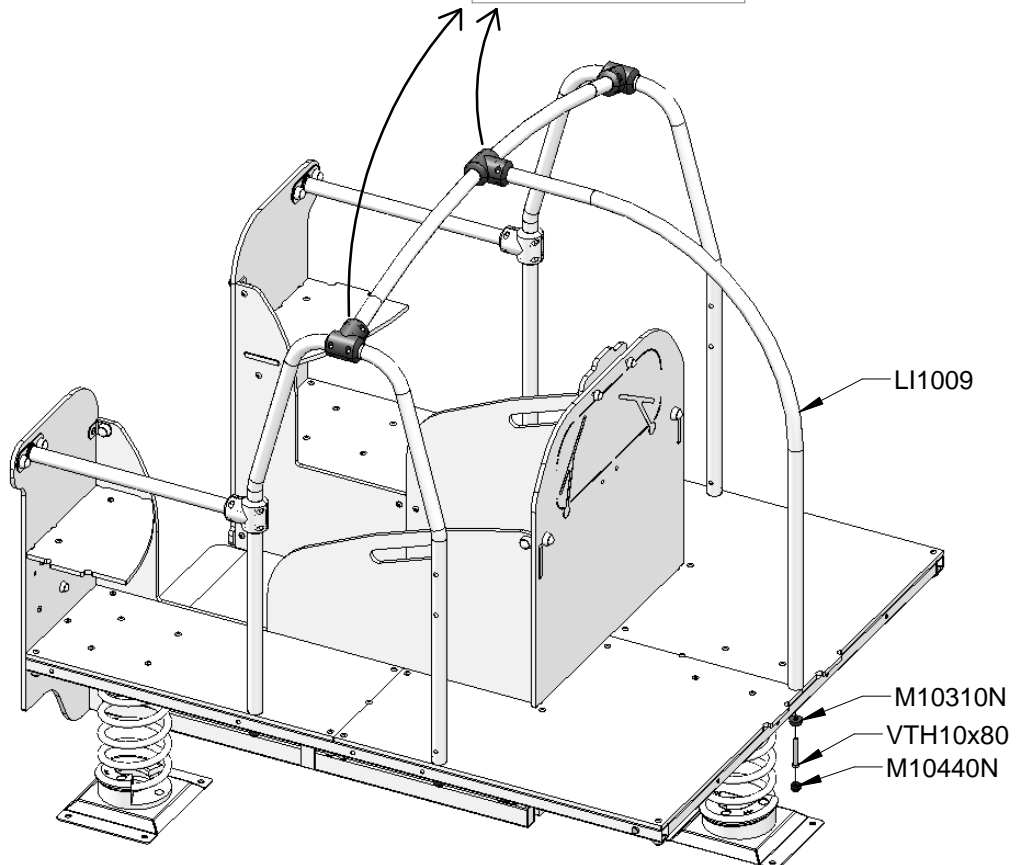
13)



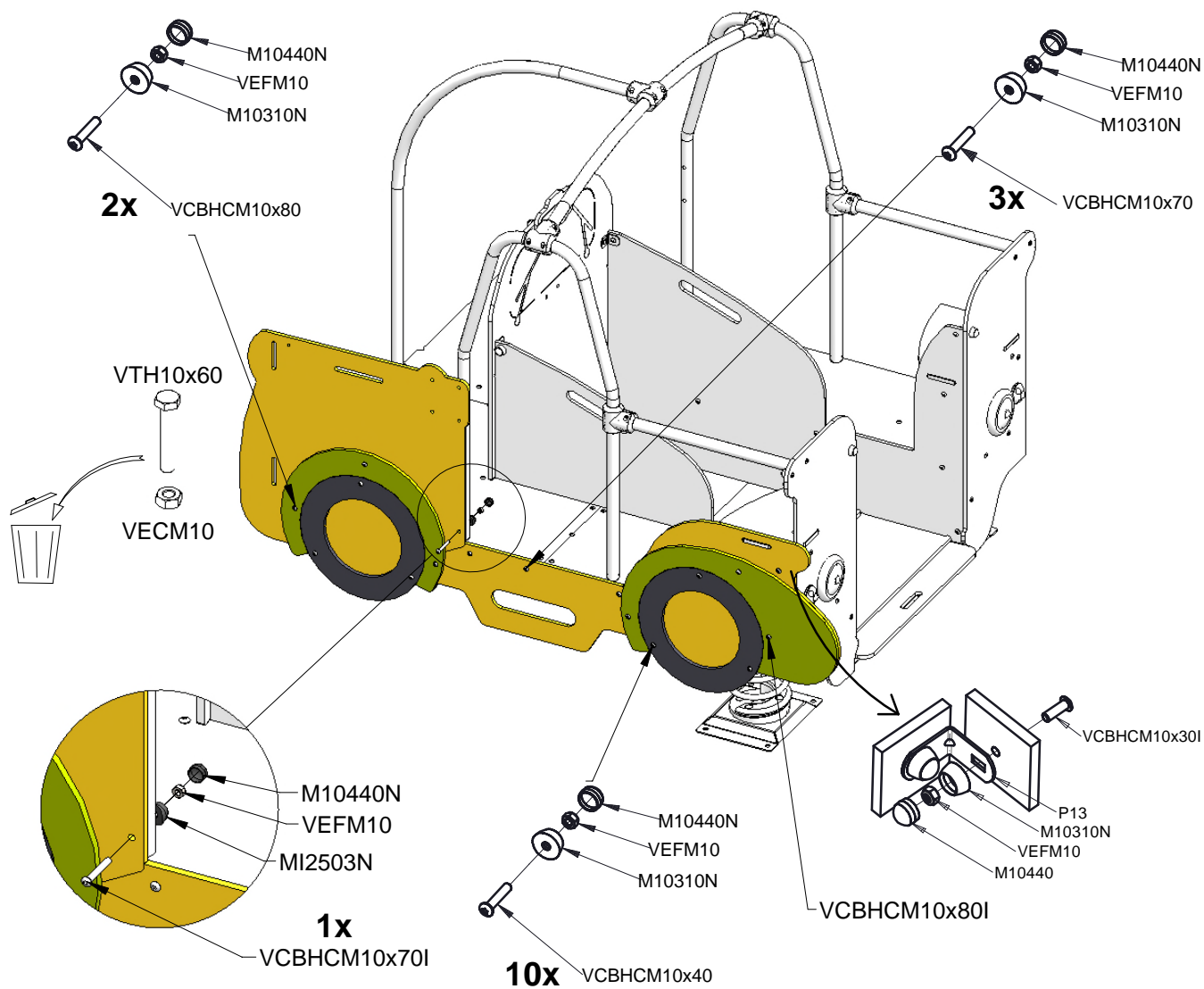
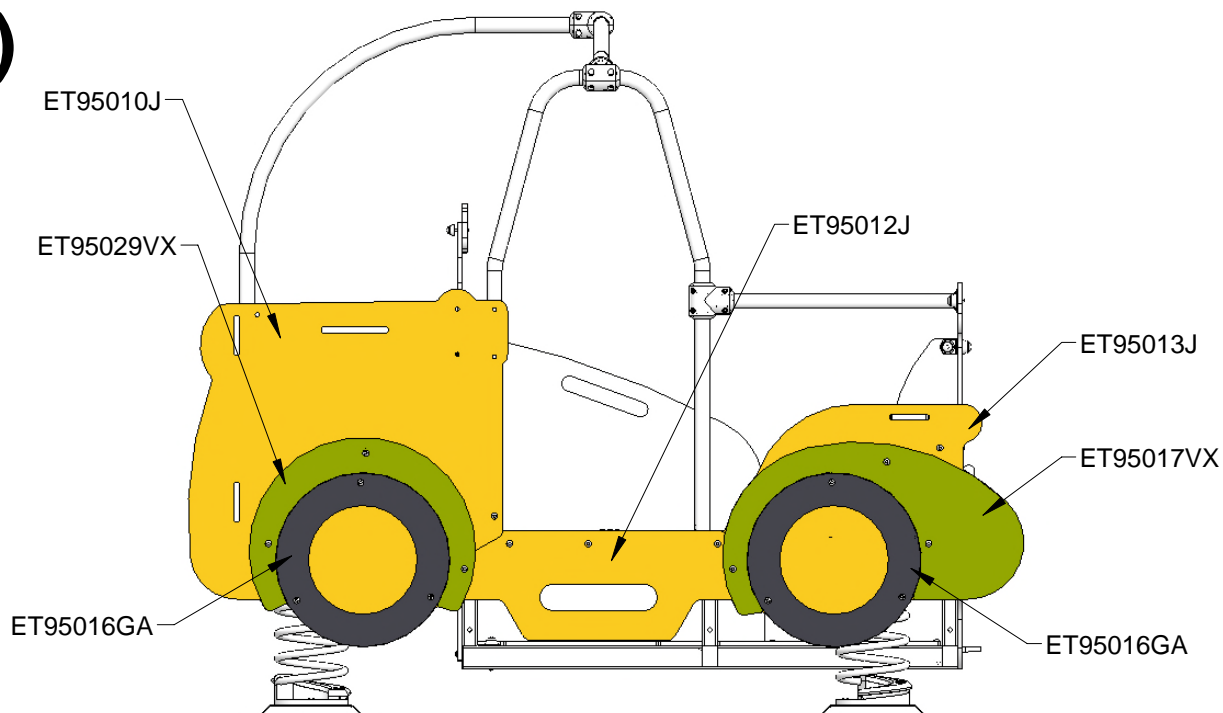
14)



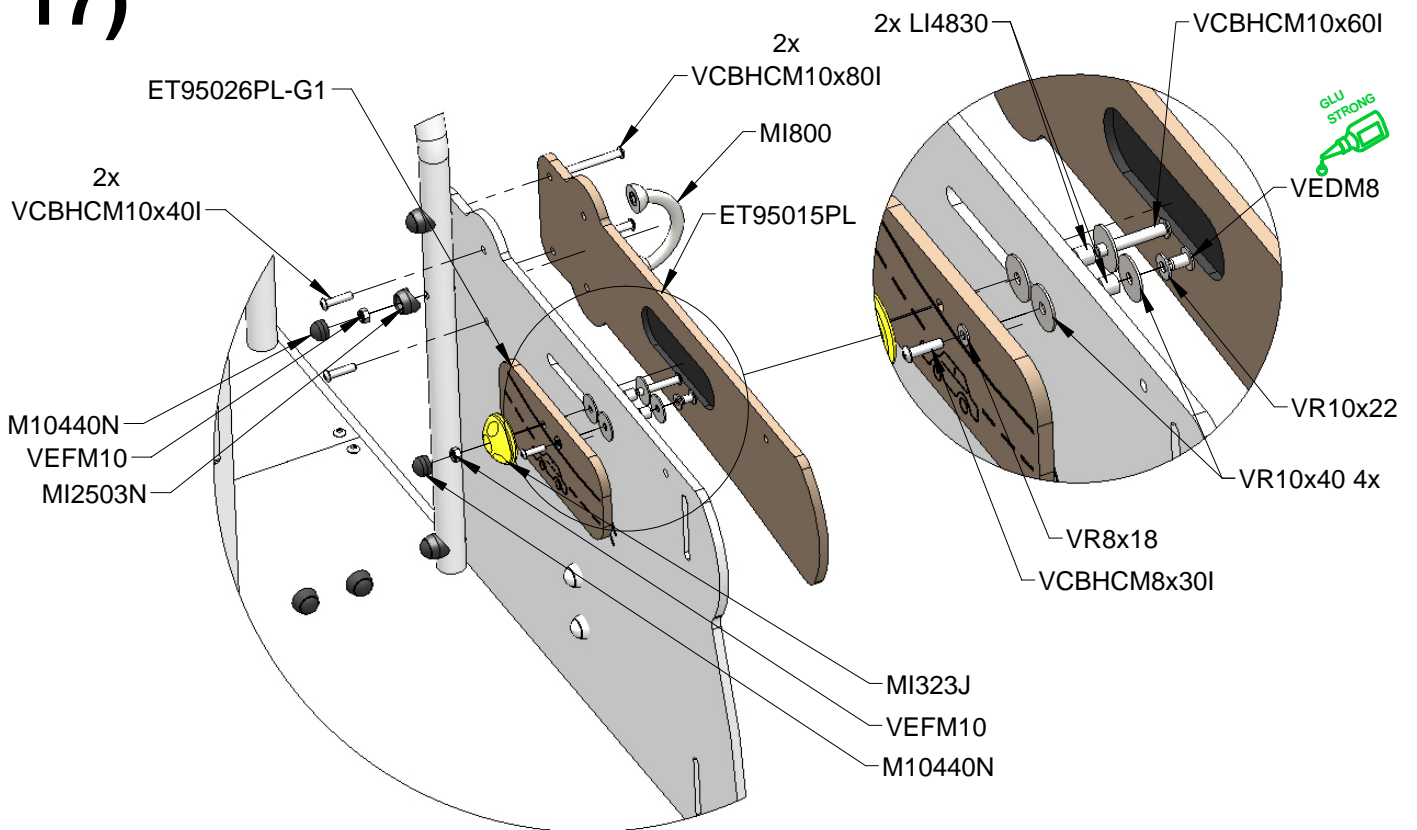
15)



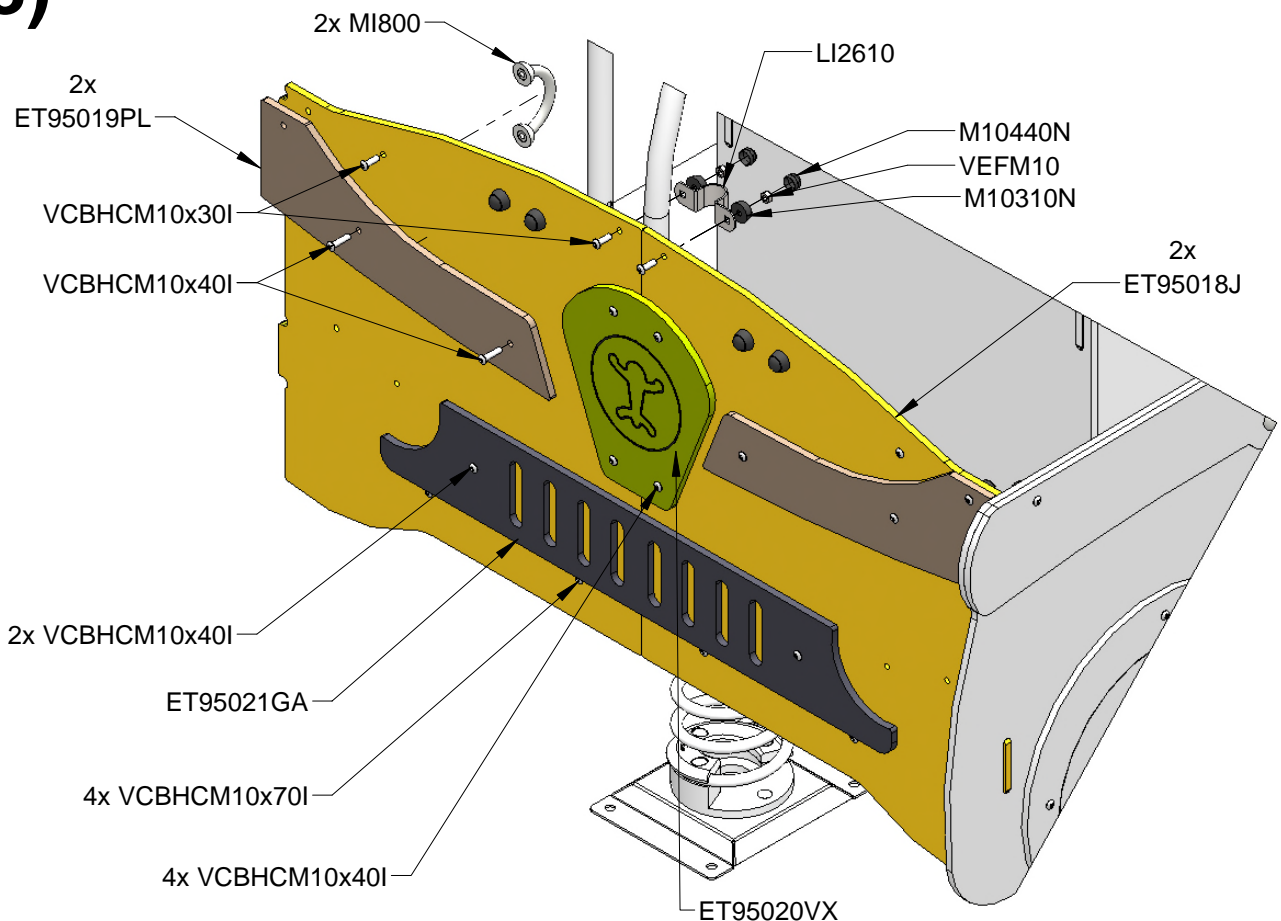
16)



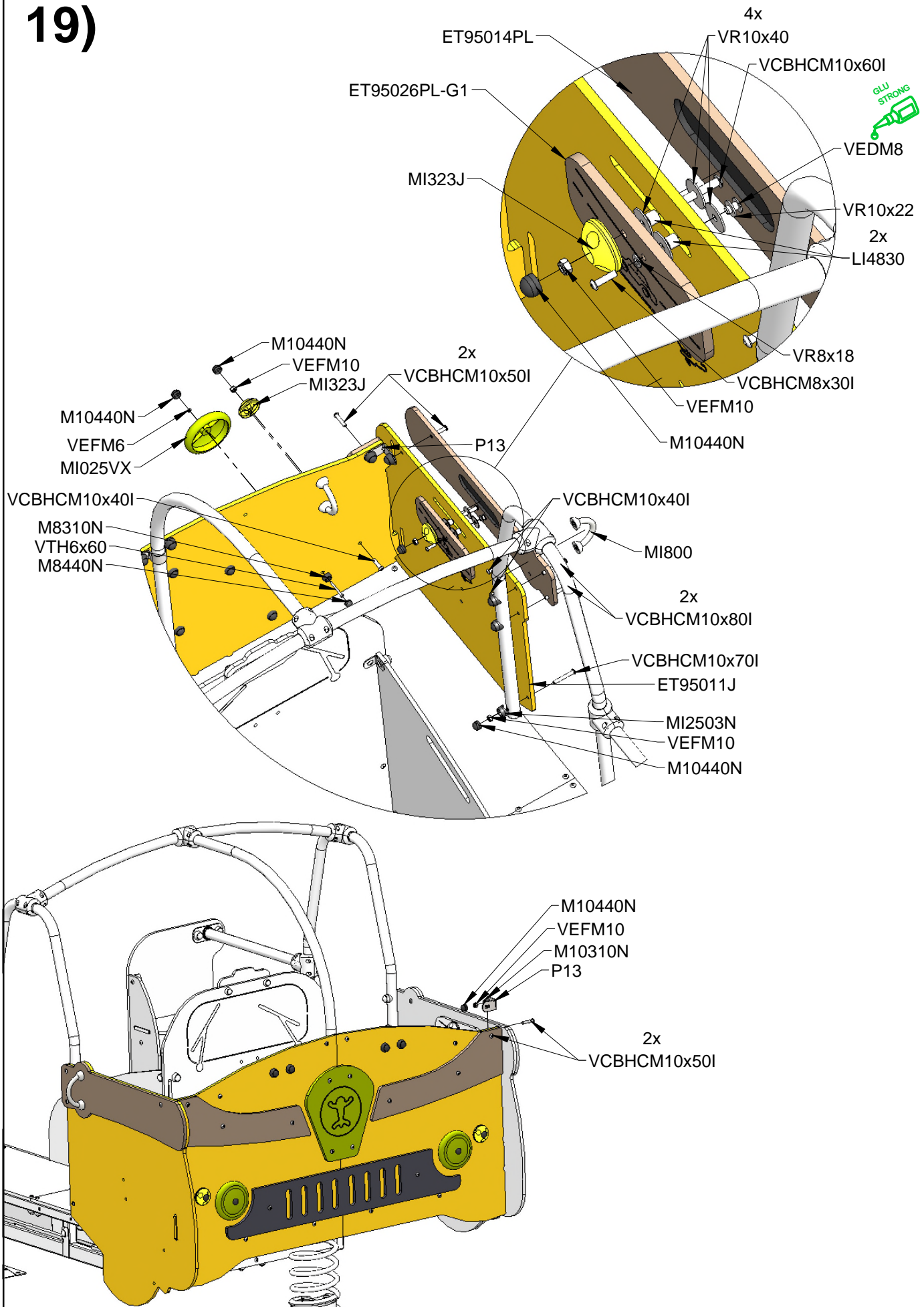
17)



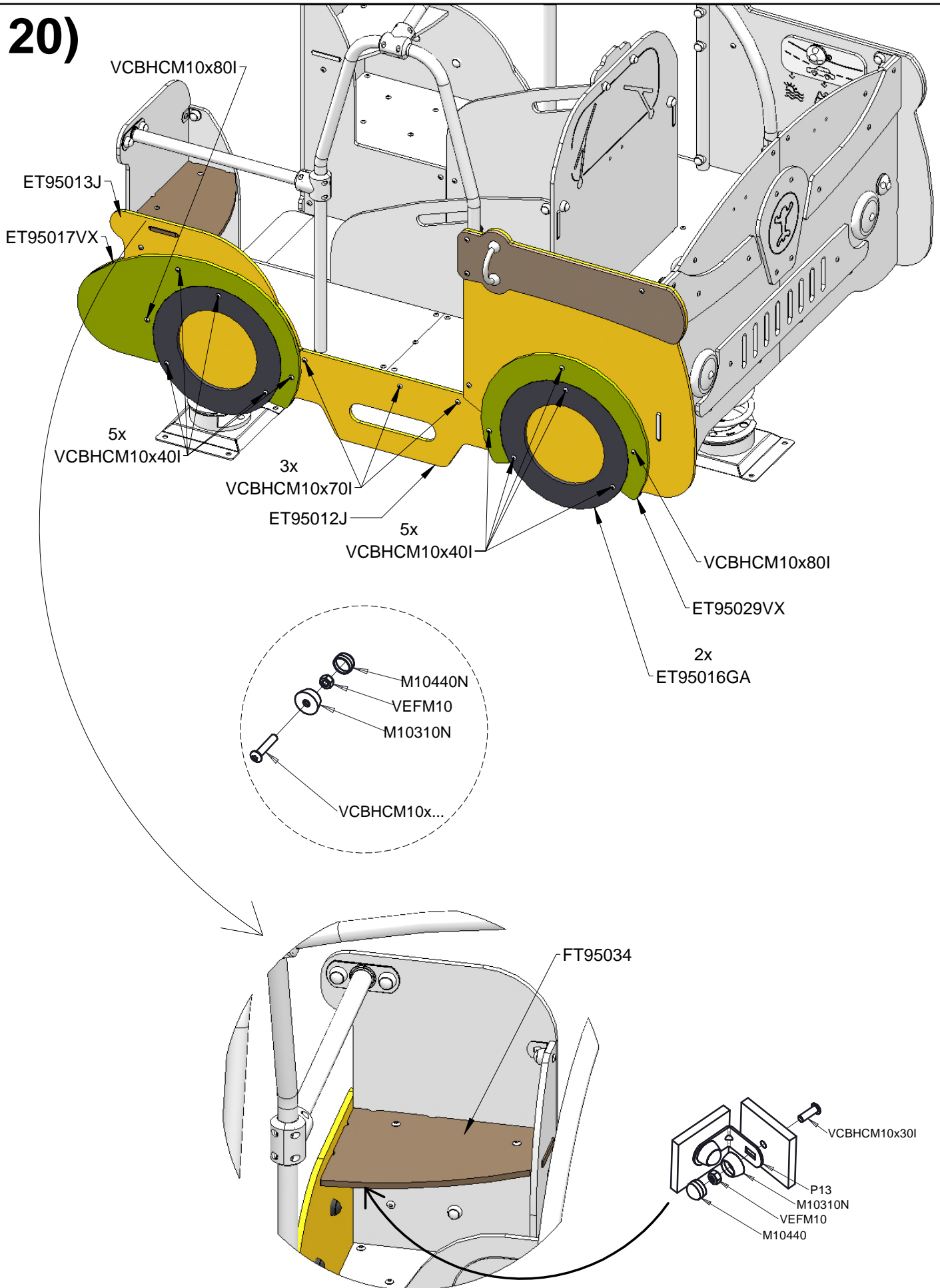
18)



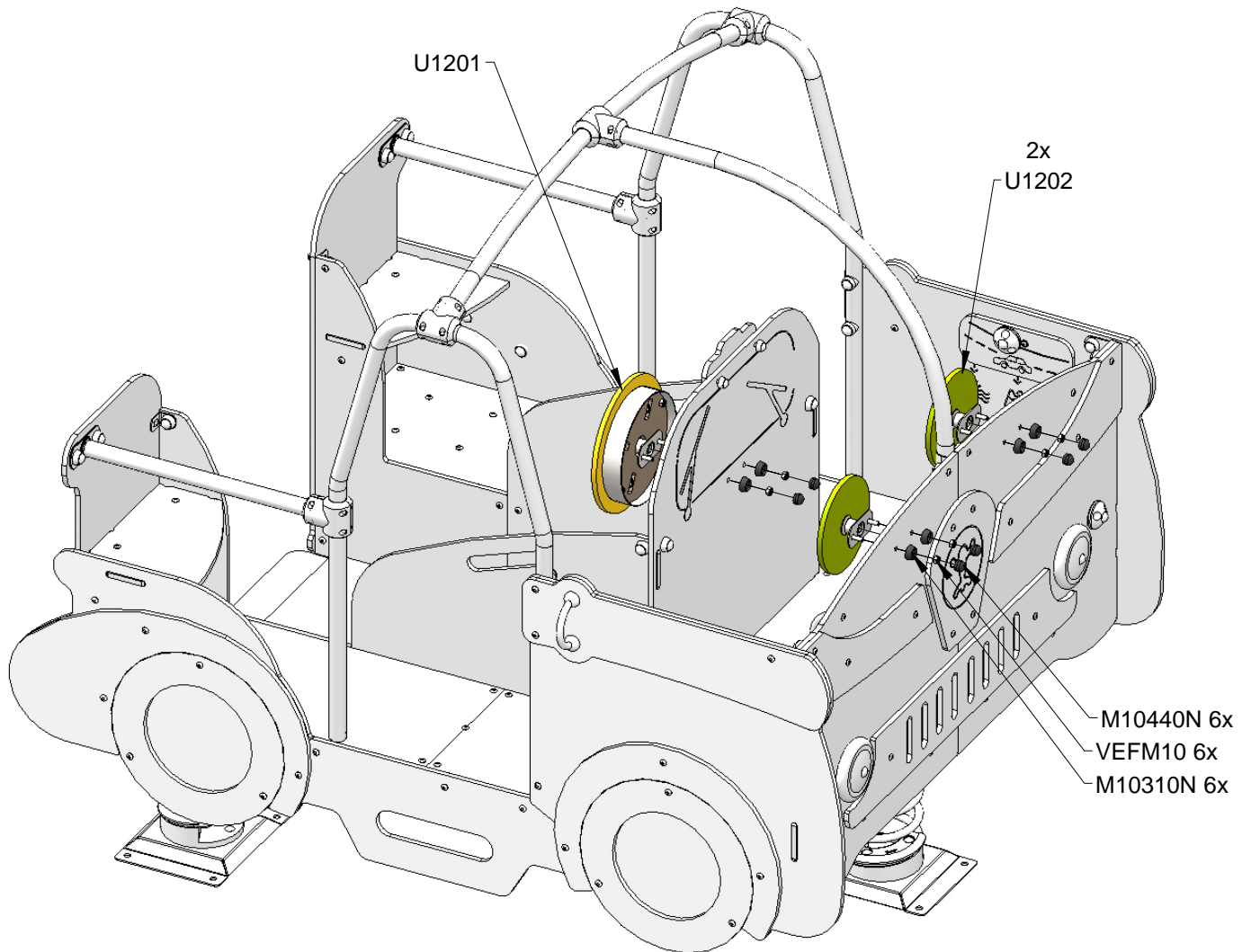
19)

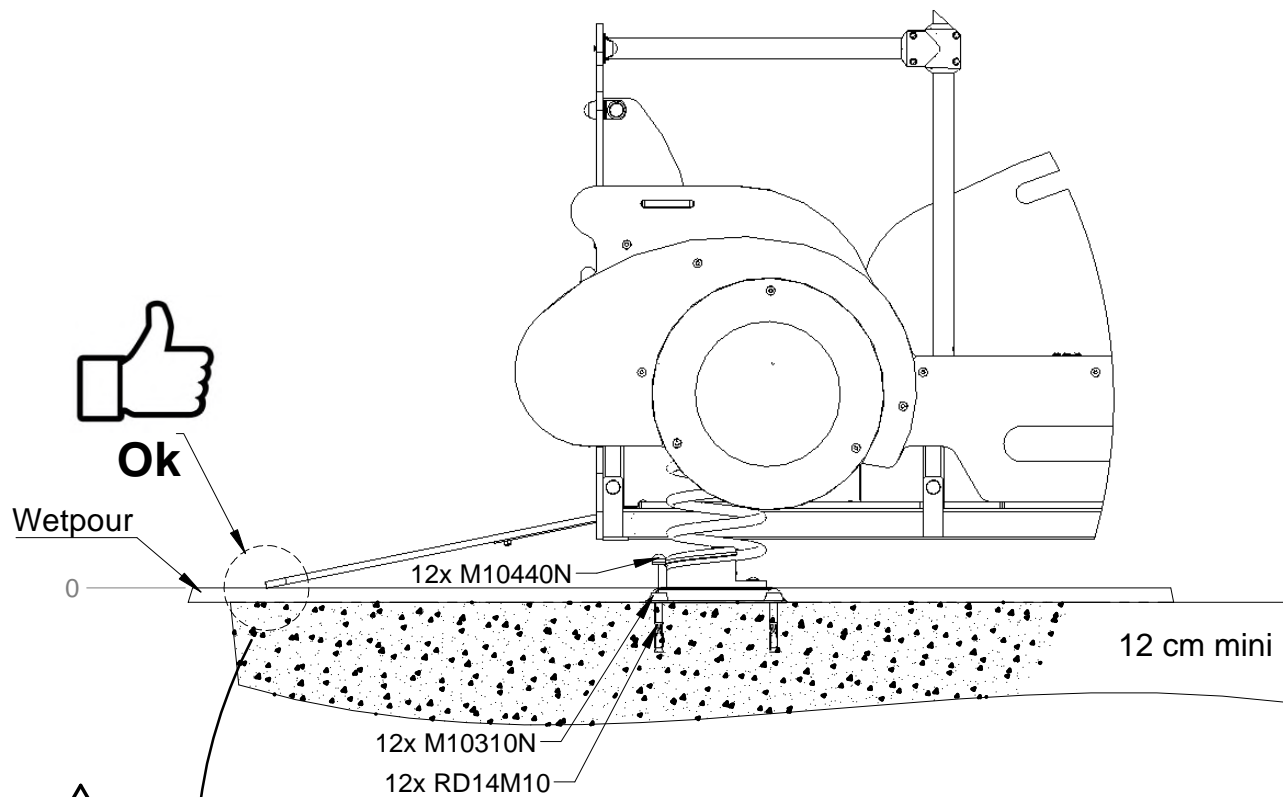


20)



21)





NOK

