



2 → +

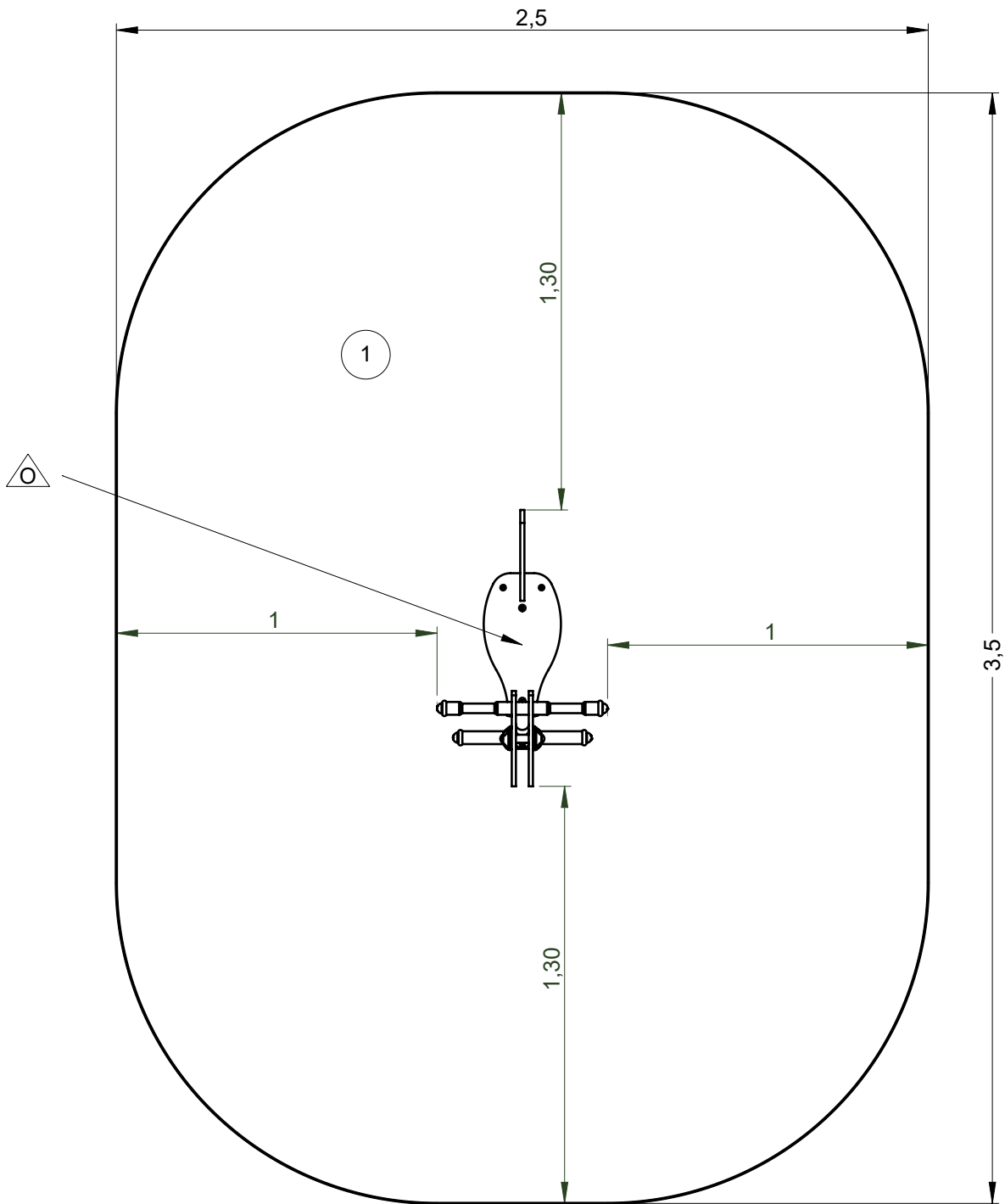
*Proludic*

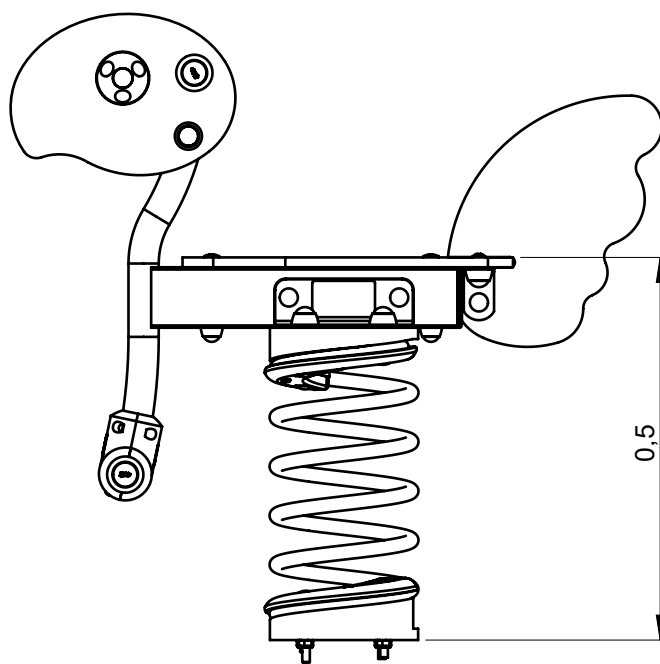
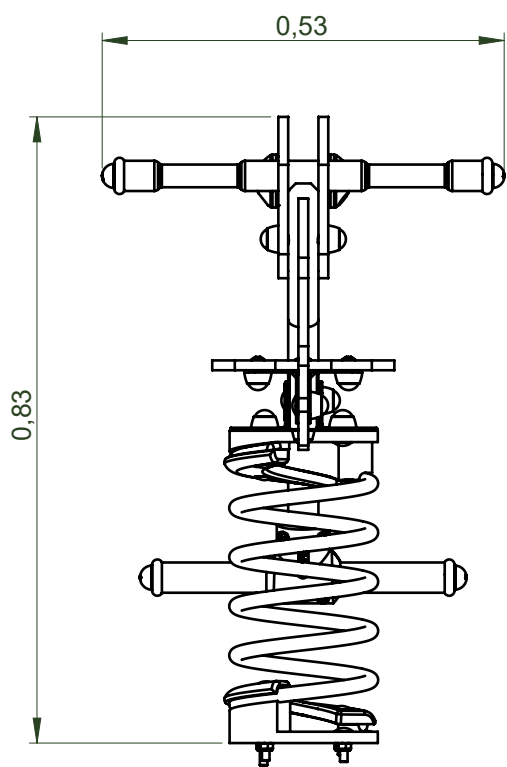
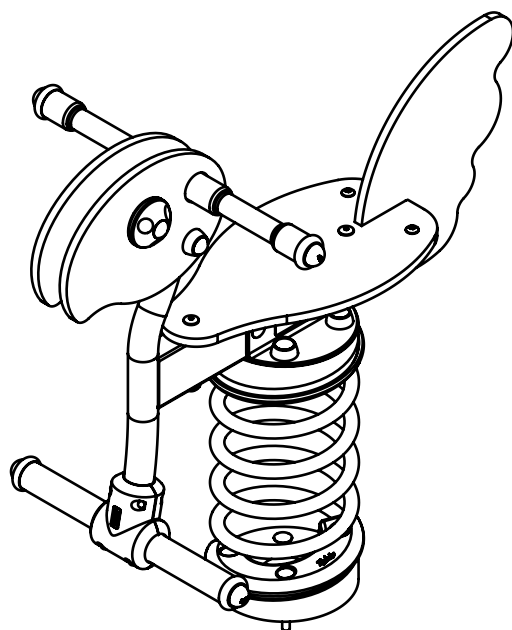
N°		
①	0.6 m	8 m <sup>2</sup>

— Zone d'impact  
Impact area  
Area de impacto  
Fallraum  
Valzone

△ Point de référence  
Setting out point  
Punto de referencia  
Bezugspunkt  
Referentiepunt

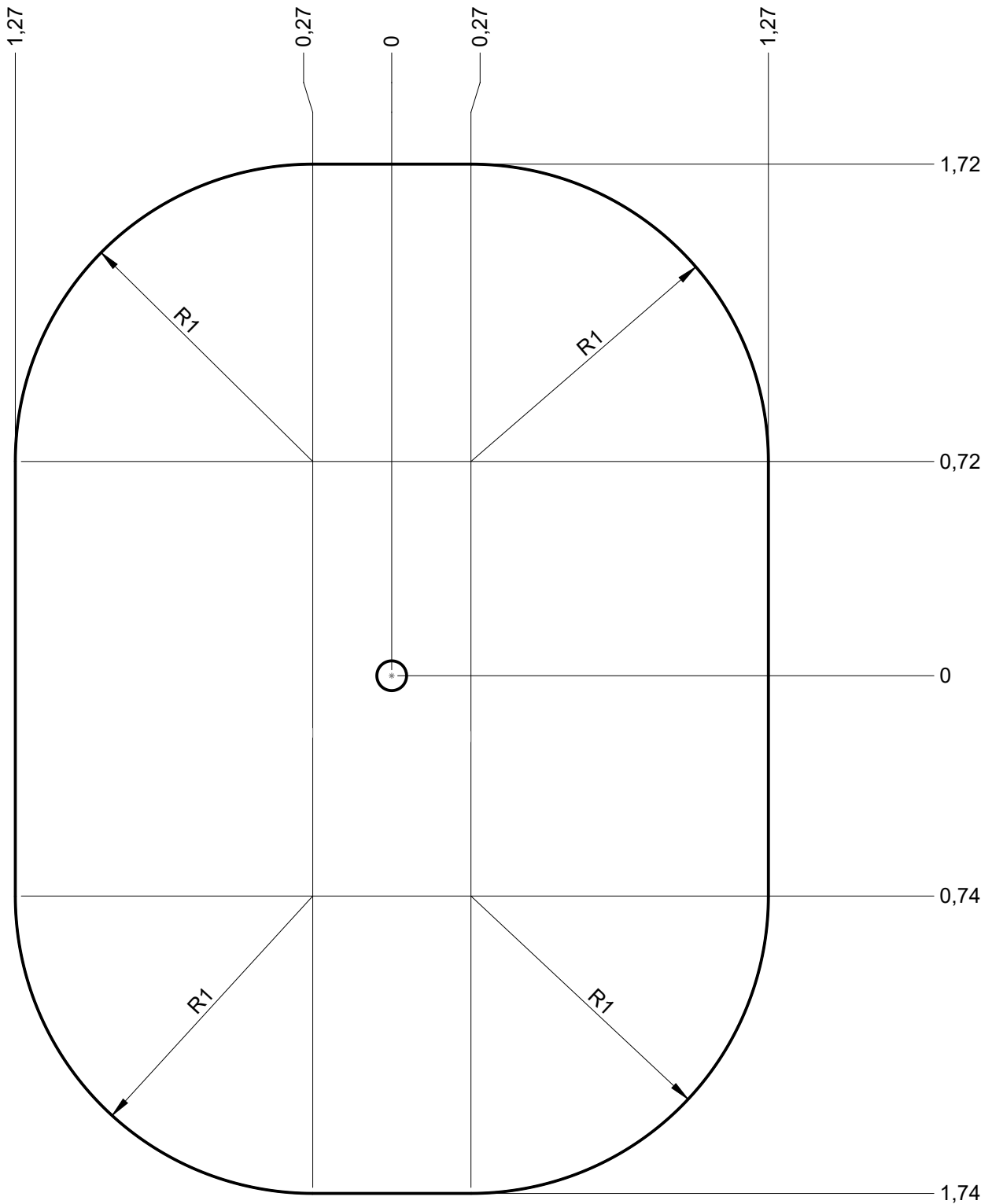
EN 1176-1 : 2017  
EN 1176-6 : 2017





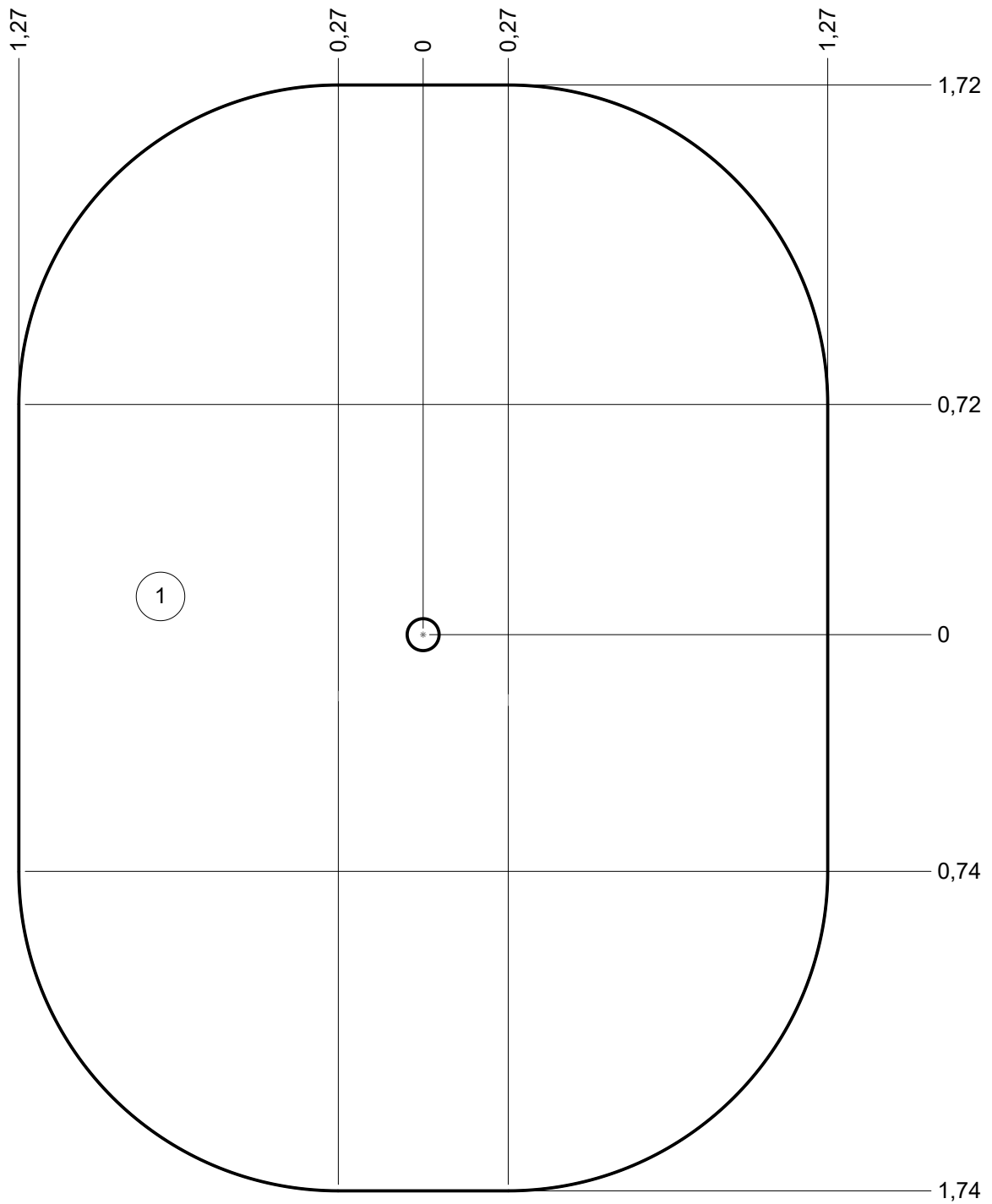
— Zone d'impact  
Impact area  
Area de impacto  
Fallraum  
Valzone

8 m<sup>2</sup>



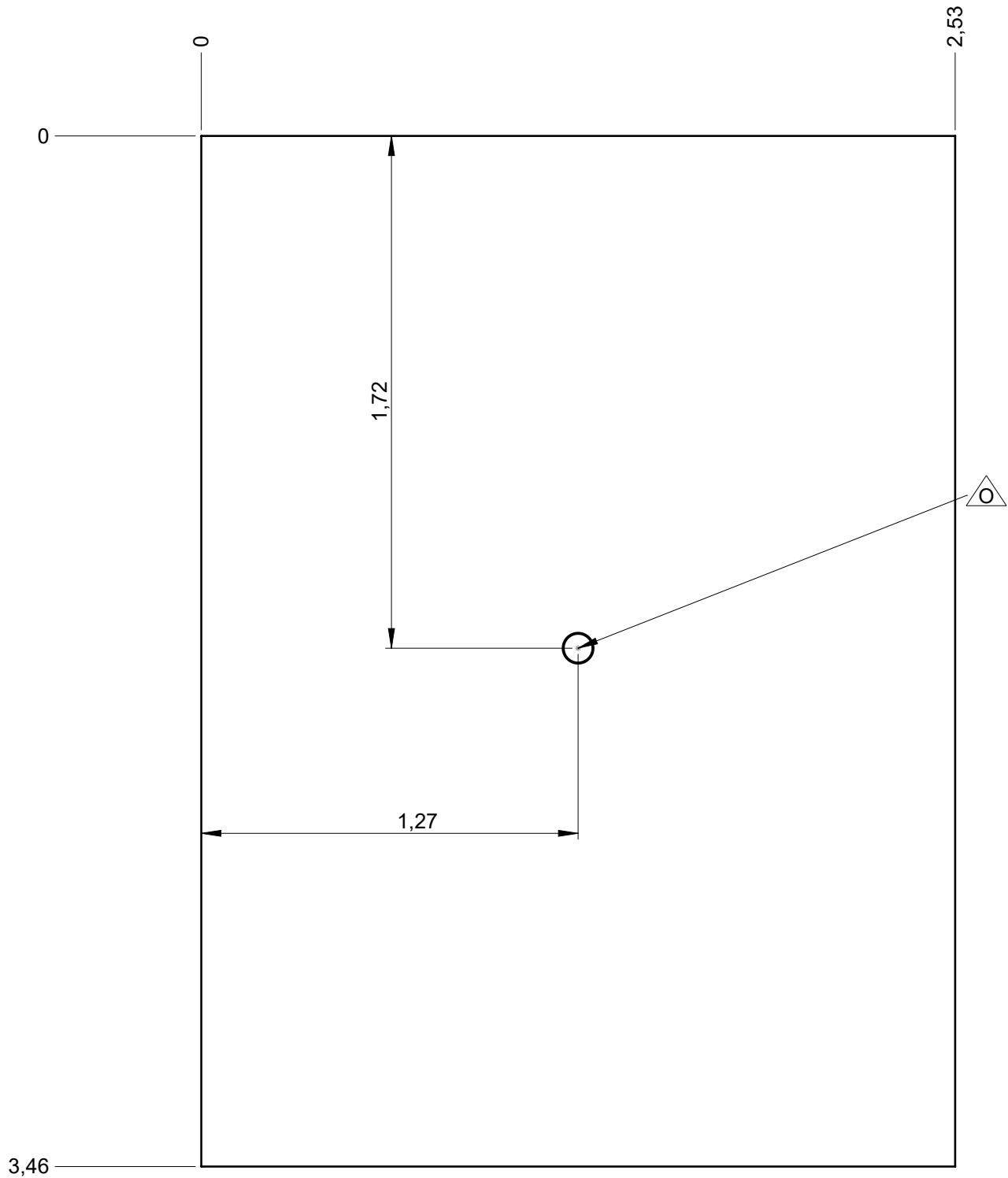
— Sol souple  
Wetpour  
Caucho continuo  
Synthetischer fallschutz  
Gietvloer

8 m<sup>2</sup>

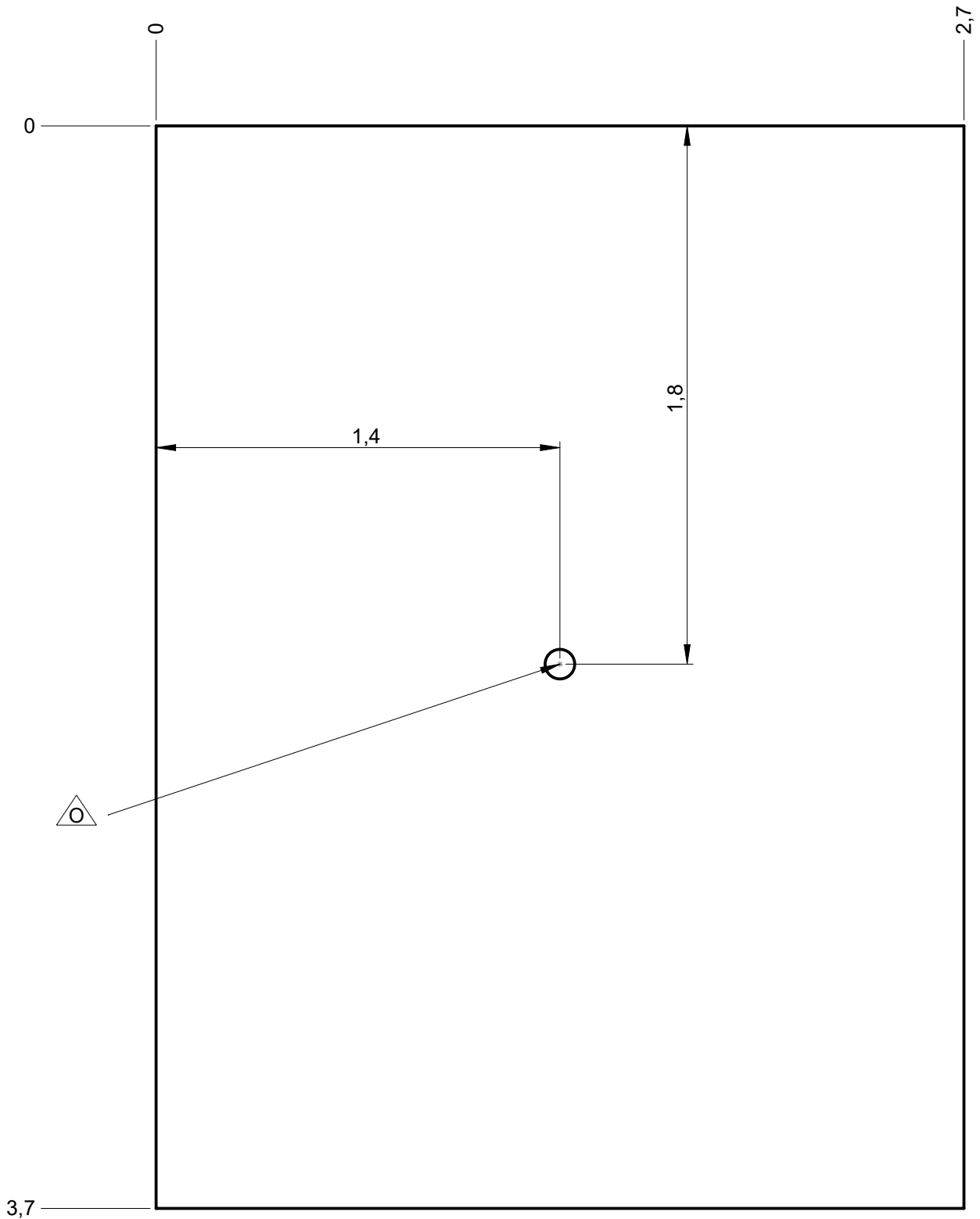


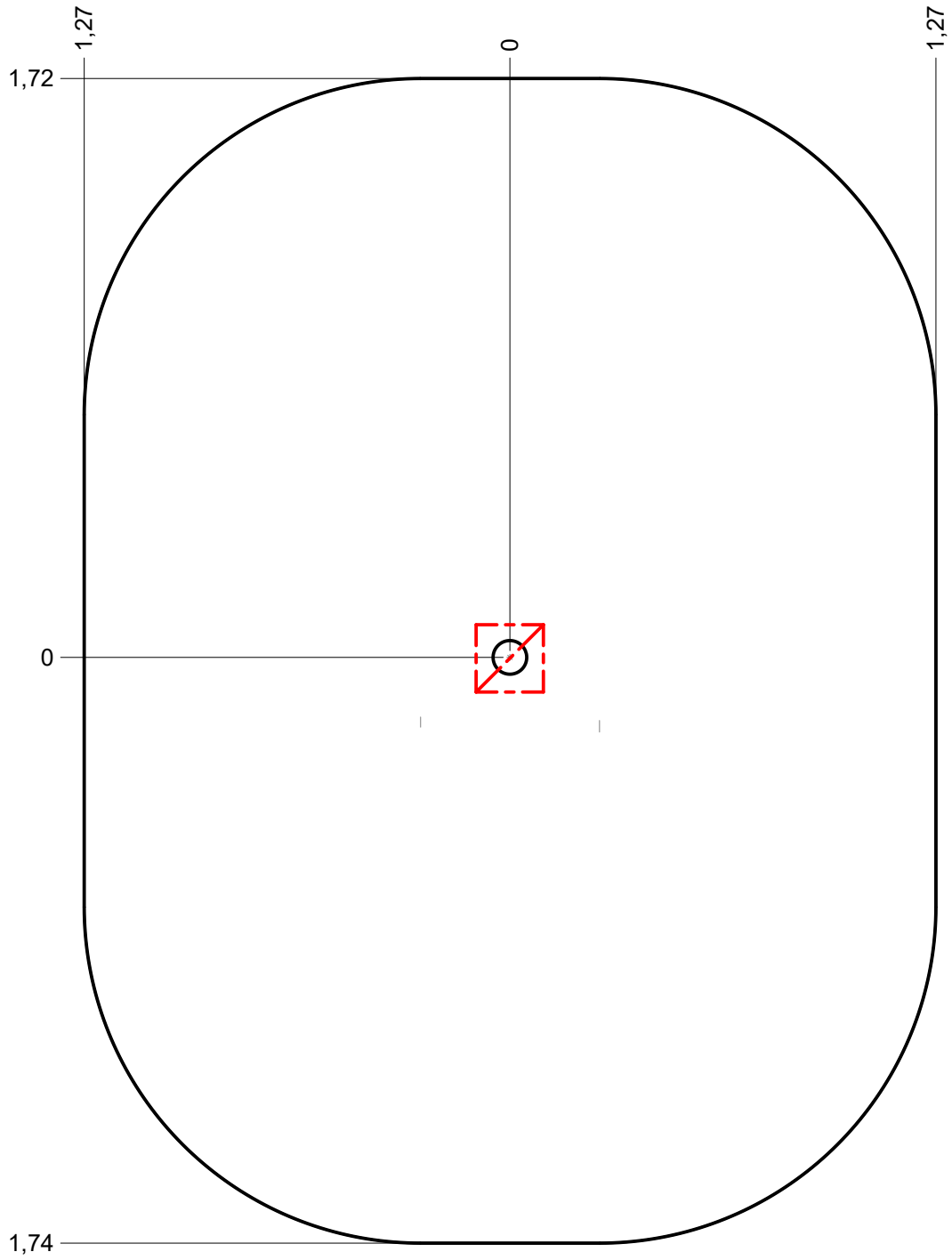
— Dalle béton  
Concrete pad  
Solera de hormigon  
Beton bodenplatte  
Betonnen bodemplaat




12 m  
8.5 m<sup>2</sup>



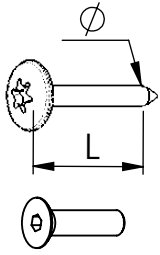
— Sol fluent  
Loos particule material **12.5 m**  
Arenero  
Loses Bodenmaterial **9.5 m<sup>2</sup>**  
Los bodemateriaal





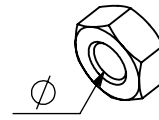
 <b>X1</b>	 <b>1H</b>	 <b>x, xm<sup>3</sup></b>
--	--	---



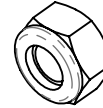


VBT 6 x 30  
 $\varnothing$   $\uparrow$  L (mm)

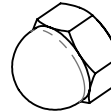
VFHC



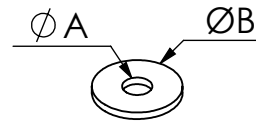
VEC M10  
 $\varnothing$




VEF




VEB



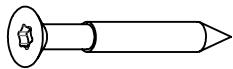
VR6x18  
 $\varnothing A$   $\varnothing B$



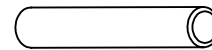
**1000 - 1800 tr/min**  
 Vitesse de rotation  
 Rotation speed



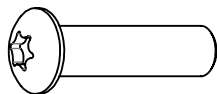
**14 N.m**  
 Couple de rupture  
 Torque of break



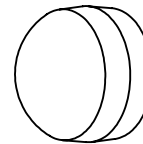
VWT



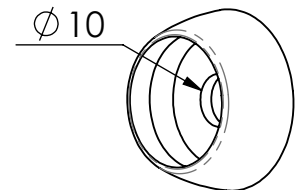
VGC



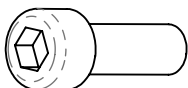
VCBHC



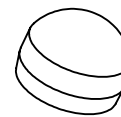
M10 440N



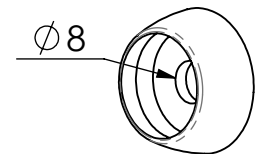
M10 310 N



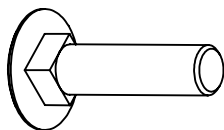
VBTR



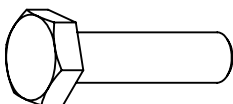
M8440N



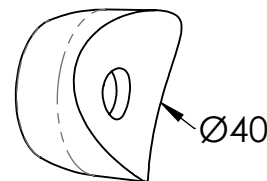
M8310N



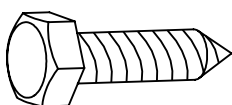
VTRCC



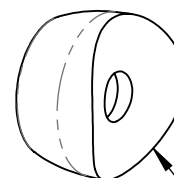
VTH



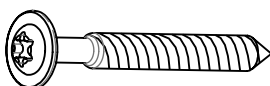
MI2503



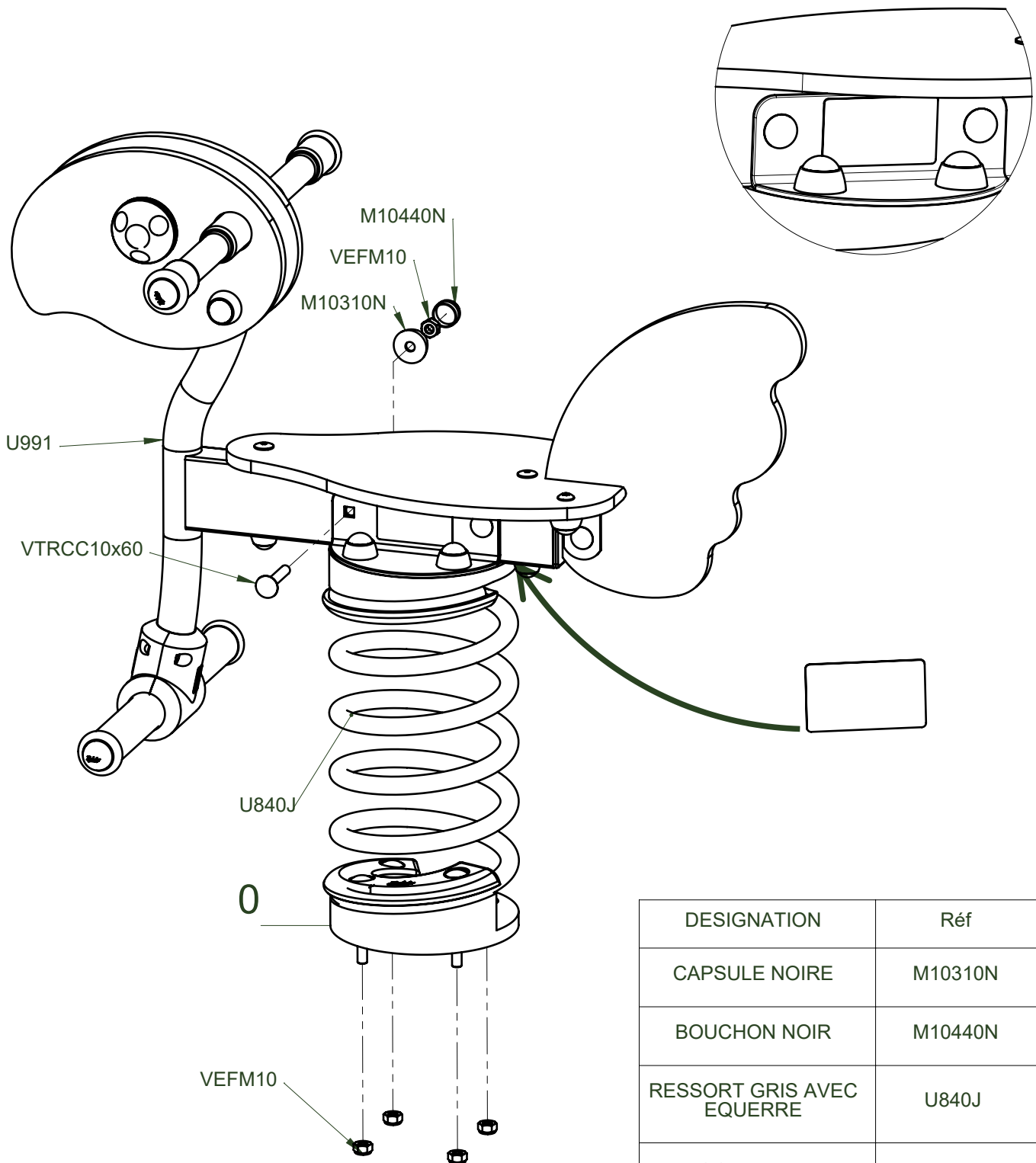
VTF



MI2701



VBT



DESIGNATION	Réf	Qté
CAPSULE NOIRE	M10310N	6
BOUCHON NOIR	M10440N	6
RESSORT GRIS AVEC EQUERRE	U840J	1
WOOPY METAL PREMONTE	U991	1
ECROU FREIN M10	VEFM10	2
Vis TRCC M10x60	VTRCC10x60	2
PLAQUE IDENTIFICATION	LA000	1

# J832 A

*ProLudic*

