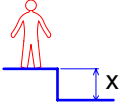
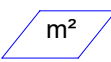




2 → +

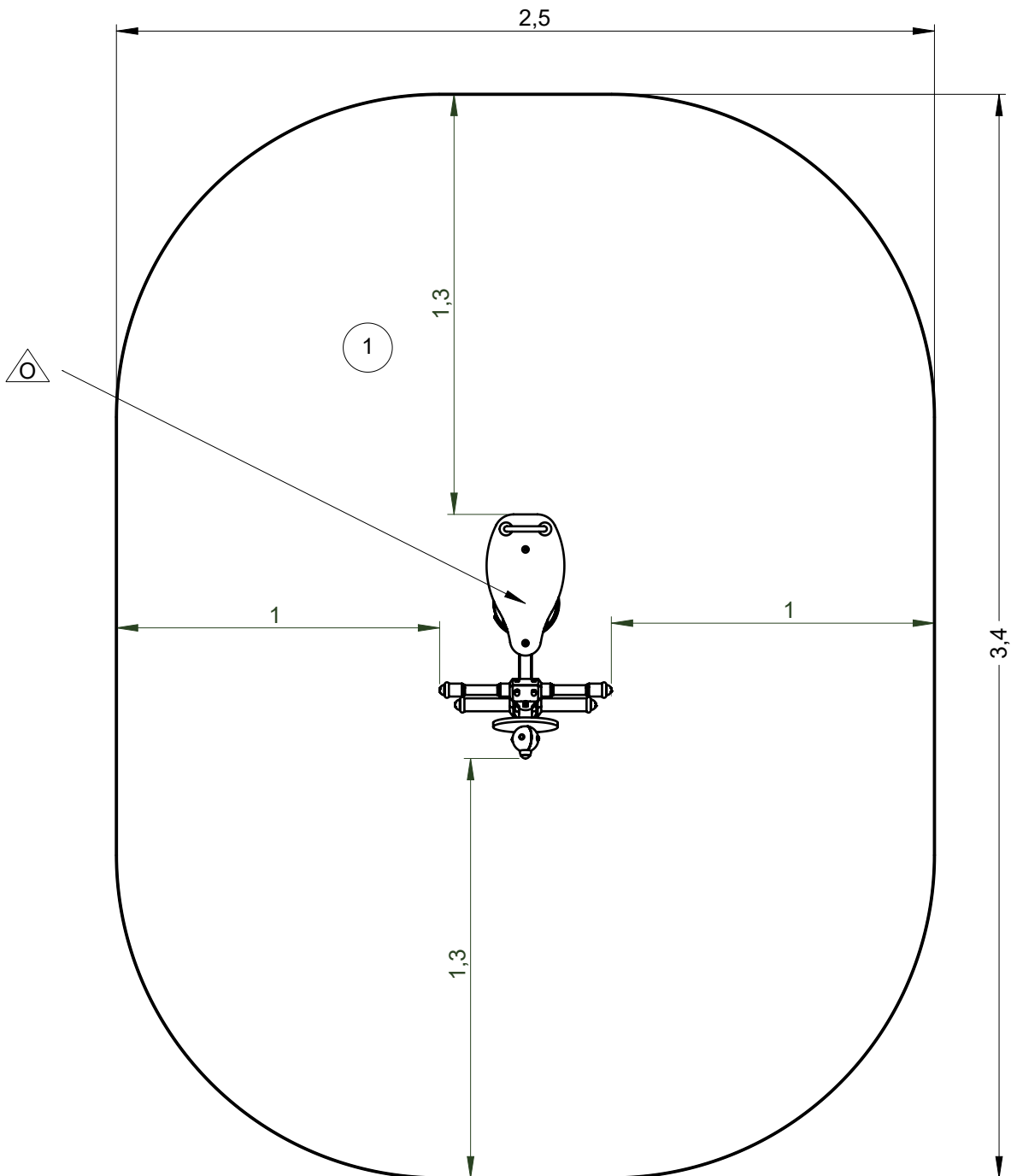
*ProLudic*

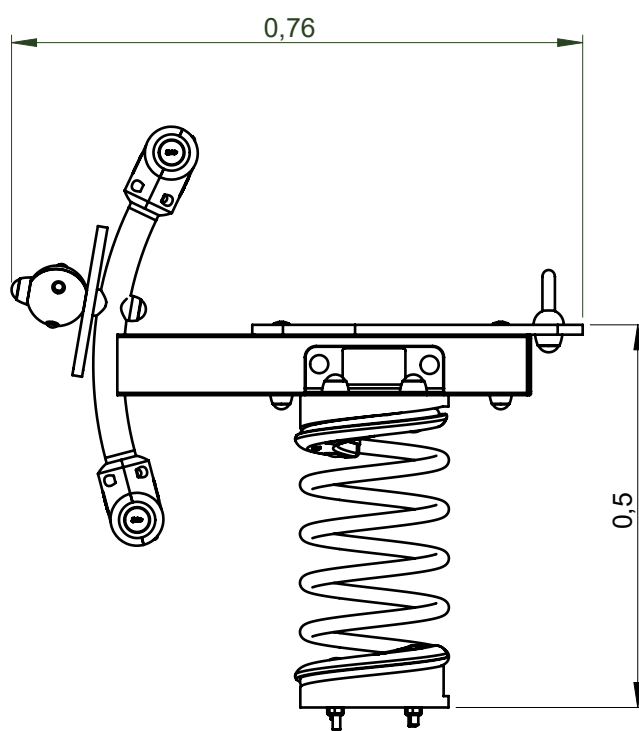
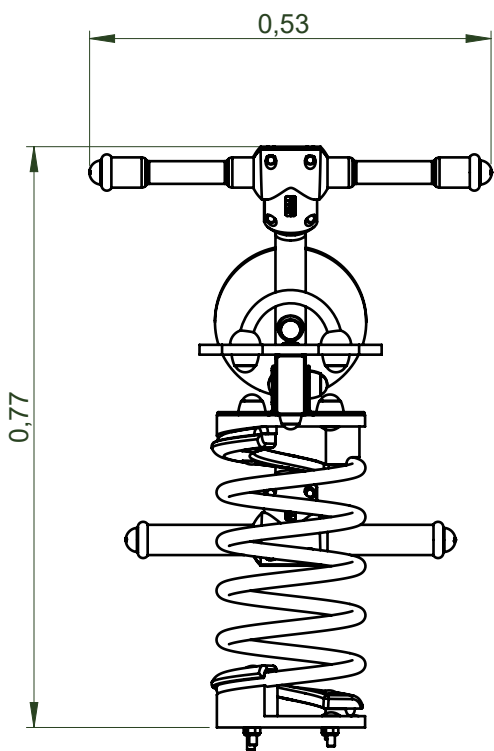
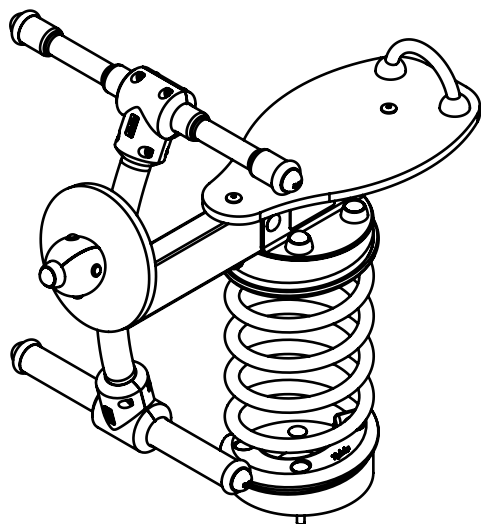
N°		
①	0.6 m	8 m²

— Zone d'impact  
Impact area  
Area de impacto  
Fallraum  
Valzone

△ Point de référence  
Setting out point  
Punto de referencia  
Bezugspunkt  
Referentiepunt

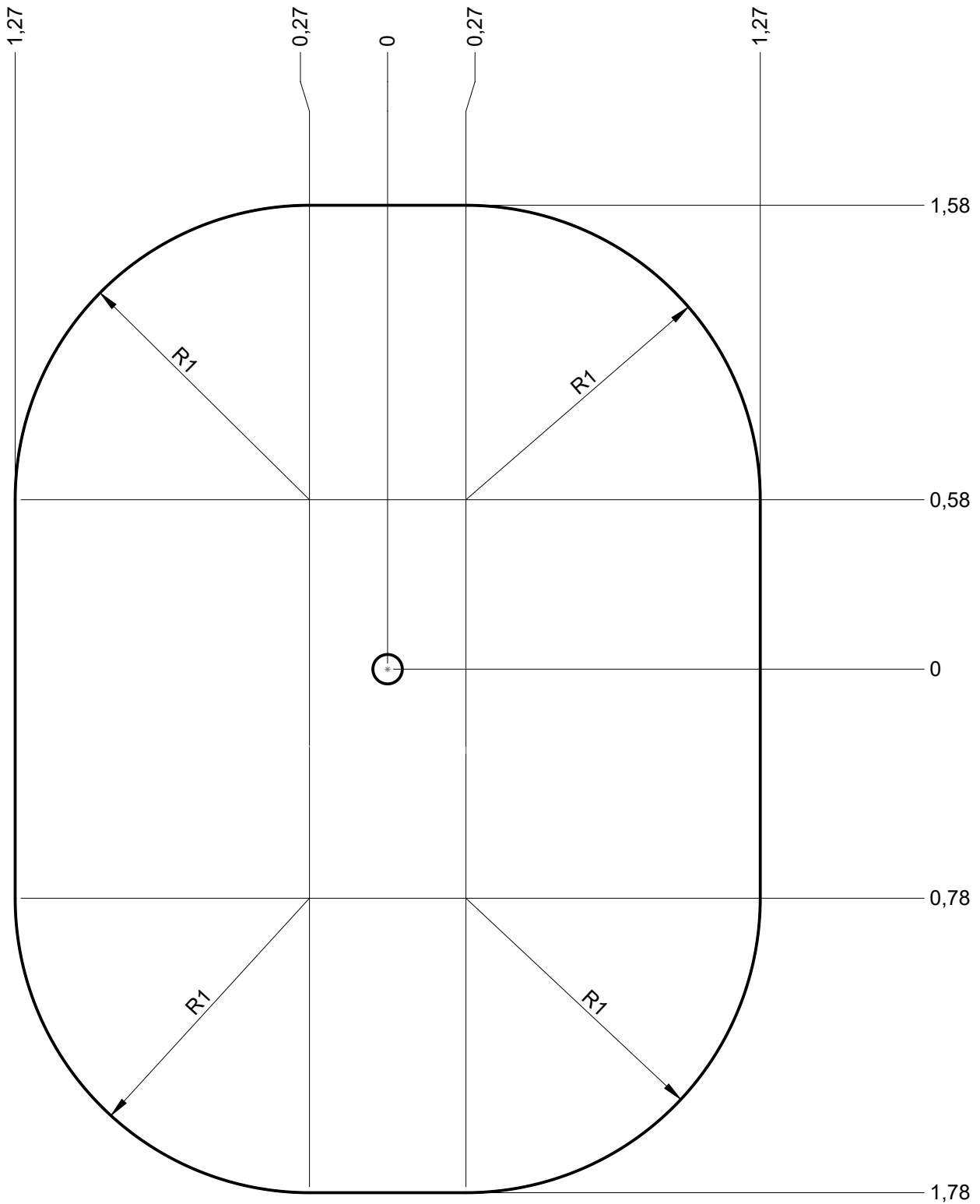
EN 1176-1 : 2017  
EN 1176-6 : 2017





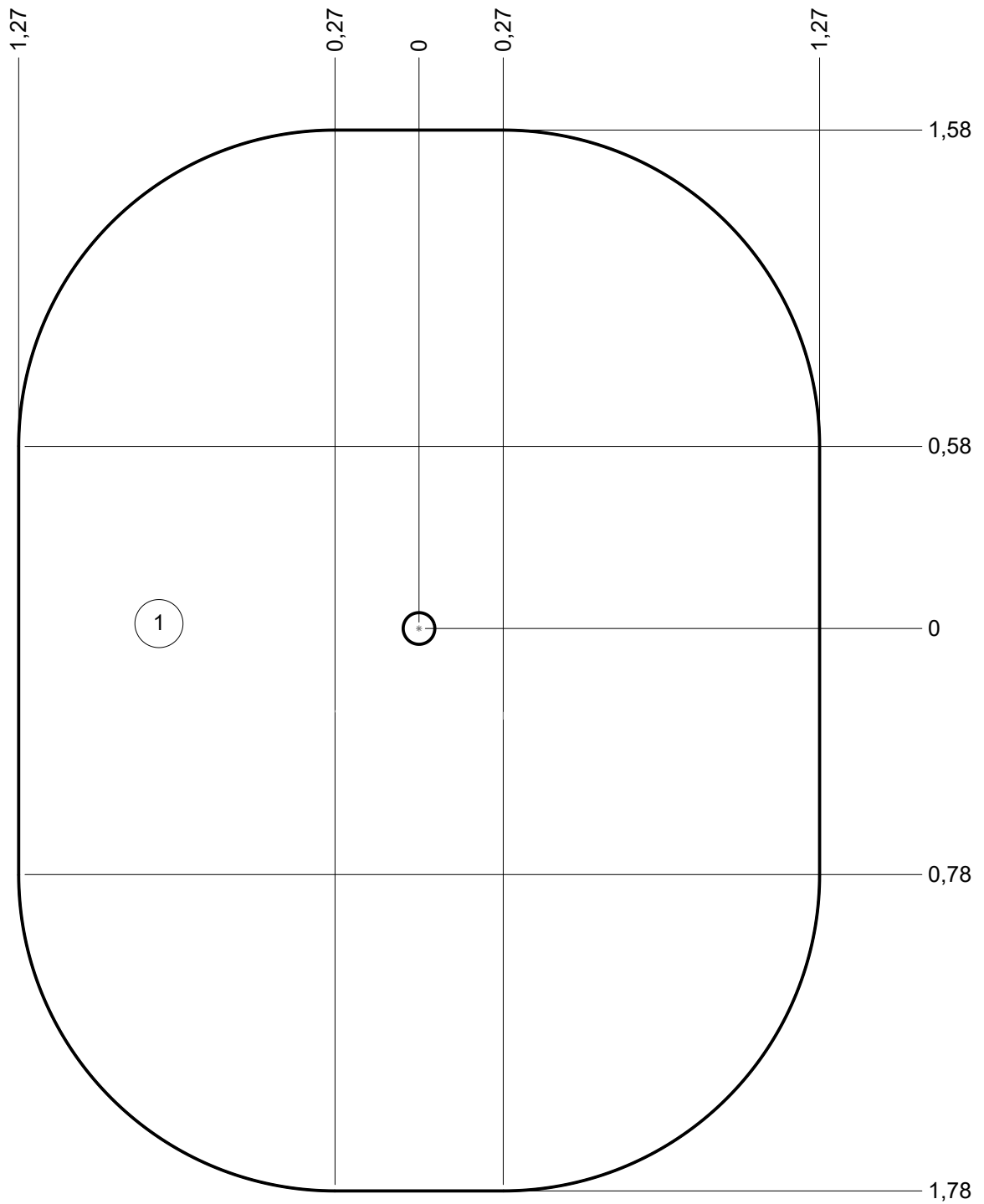
— Zone d'impact  
Impact area  
Area de impacto  
Fallraum  
Valzone

8 m<sup>2</sup>



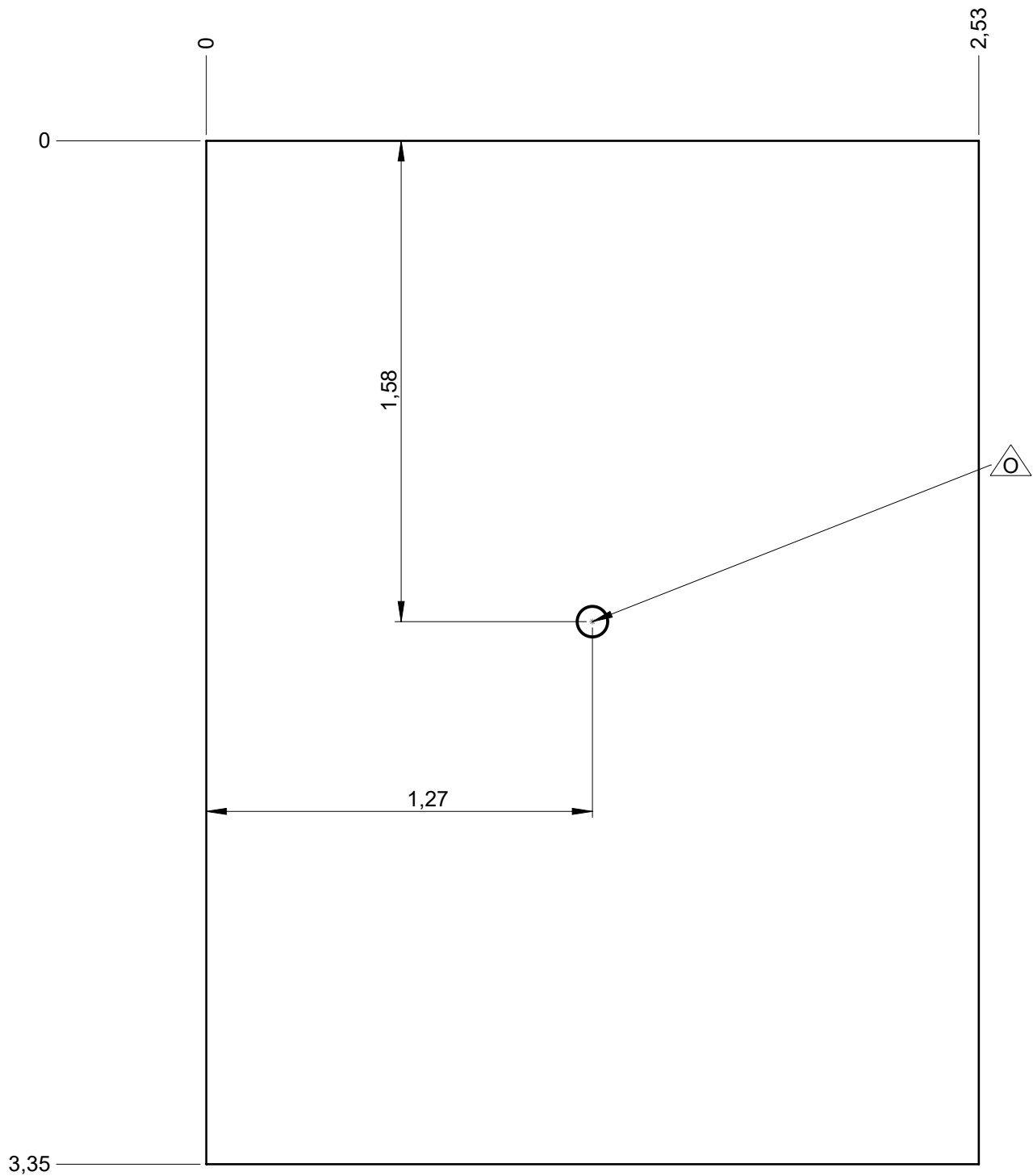
— Sol souple  
Wetpour  
Caucho continuo  
Synthetischer fallschutz  
Gietvloer

8 m<sup>2</sup>

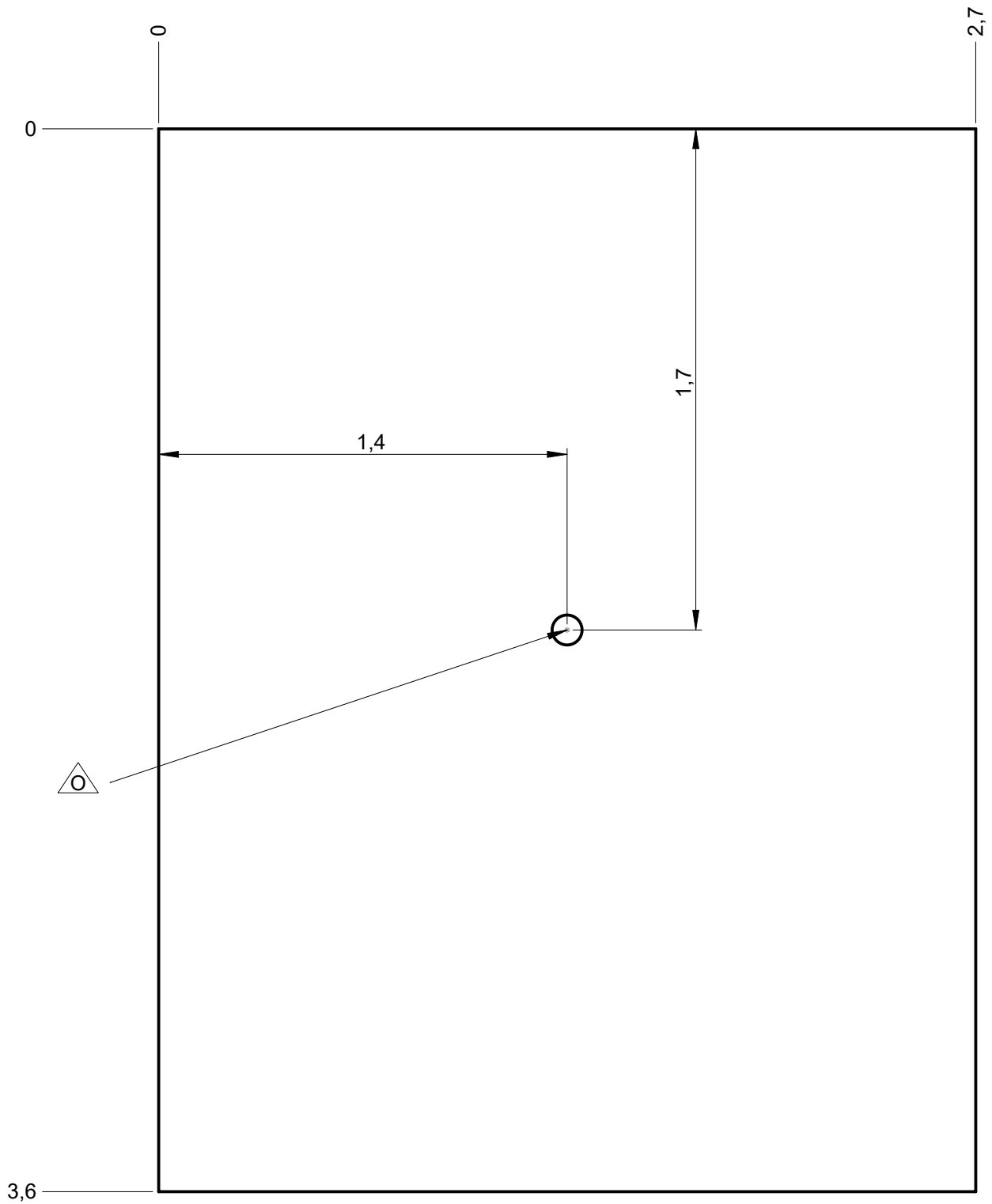


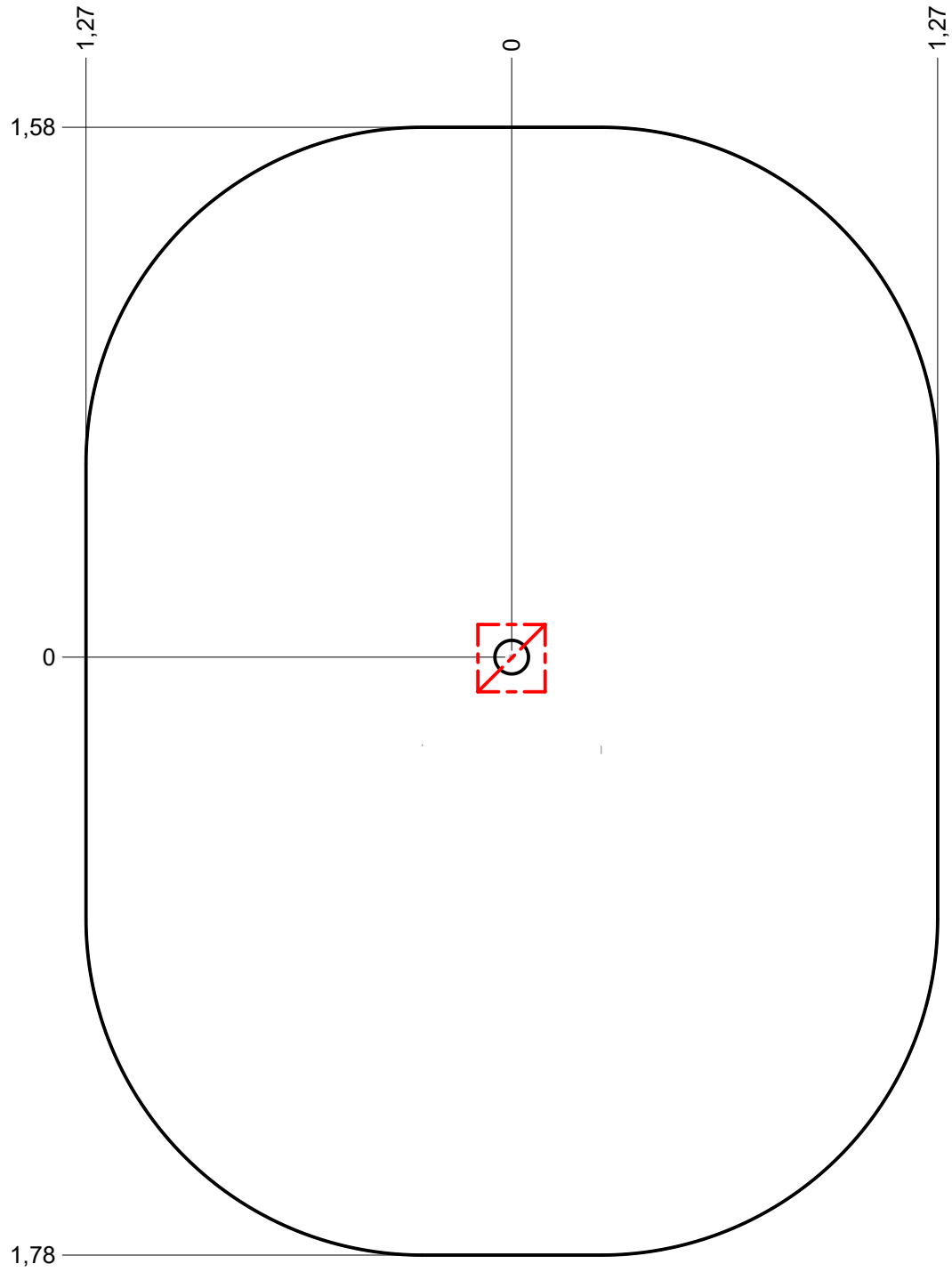
— Dalle béton  
Concrete pad  
Solera de hormigon  
Beton bodenplatte  
Betonnen bodemplaat




12 m  
8.5 m<sup>2</sup>



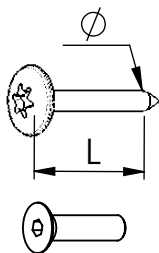
— Sol fluent  
Loos partucule material **12.5 m**  
Arenero  
Loses Bodenmaterial **9.5 m<sup>2</sup>**  
Los bodemmaterial





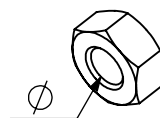
 X1	 1H	 x, xm <sup>3</sup>
---	--	--





VBT 6 x 30  
 $\varnothing$   $\uparrow$  L (mm)

VFHC



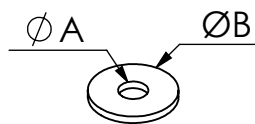
VEC M10  
 $\varnothing$




VEF




VEB



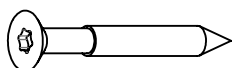
VR6x18  
 $\varnothing A$   $\varnothing B$



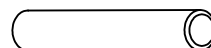
**1000 - 1800 tr/min**  
 Vitesse de rotation  
 Rotation speed



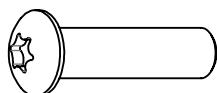
**14 N.m**  
 Couple de rupture  
 Torque of break



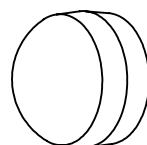
VWT



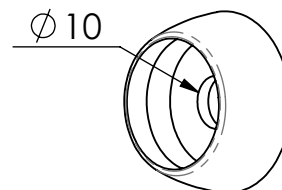
VGC



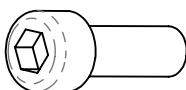
VCBHC



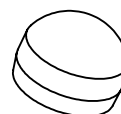
M10 440N



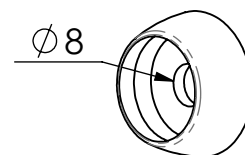
M10 310 N



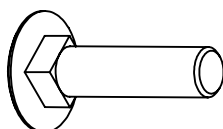
VBTR



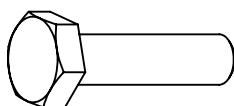
M8 440N



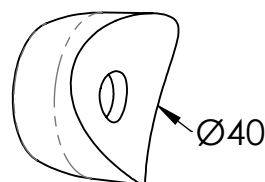
M8 310N



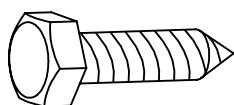
VTRCC



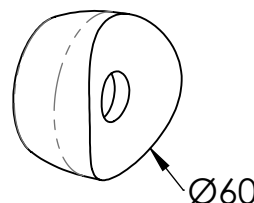
VTH



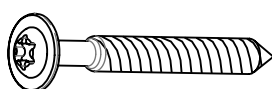
MI2503



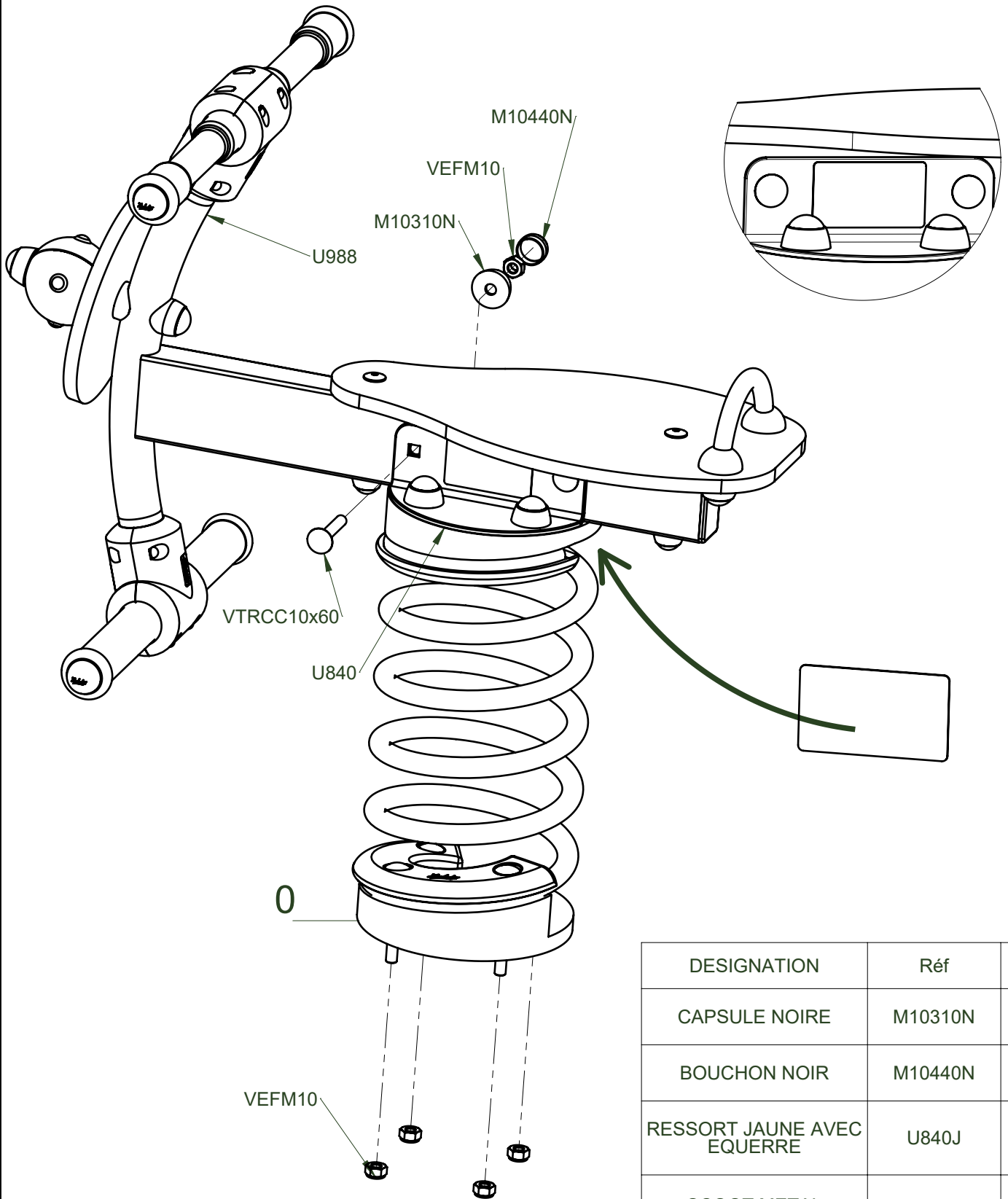
VTF



MI2701



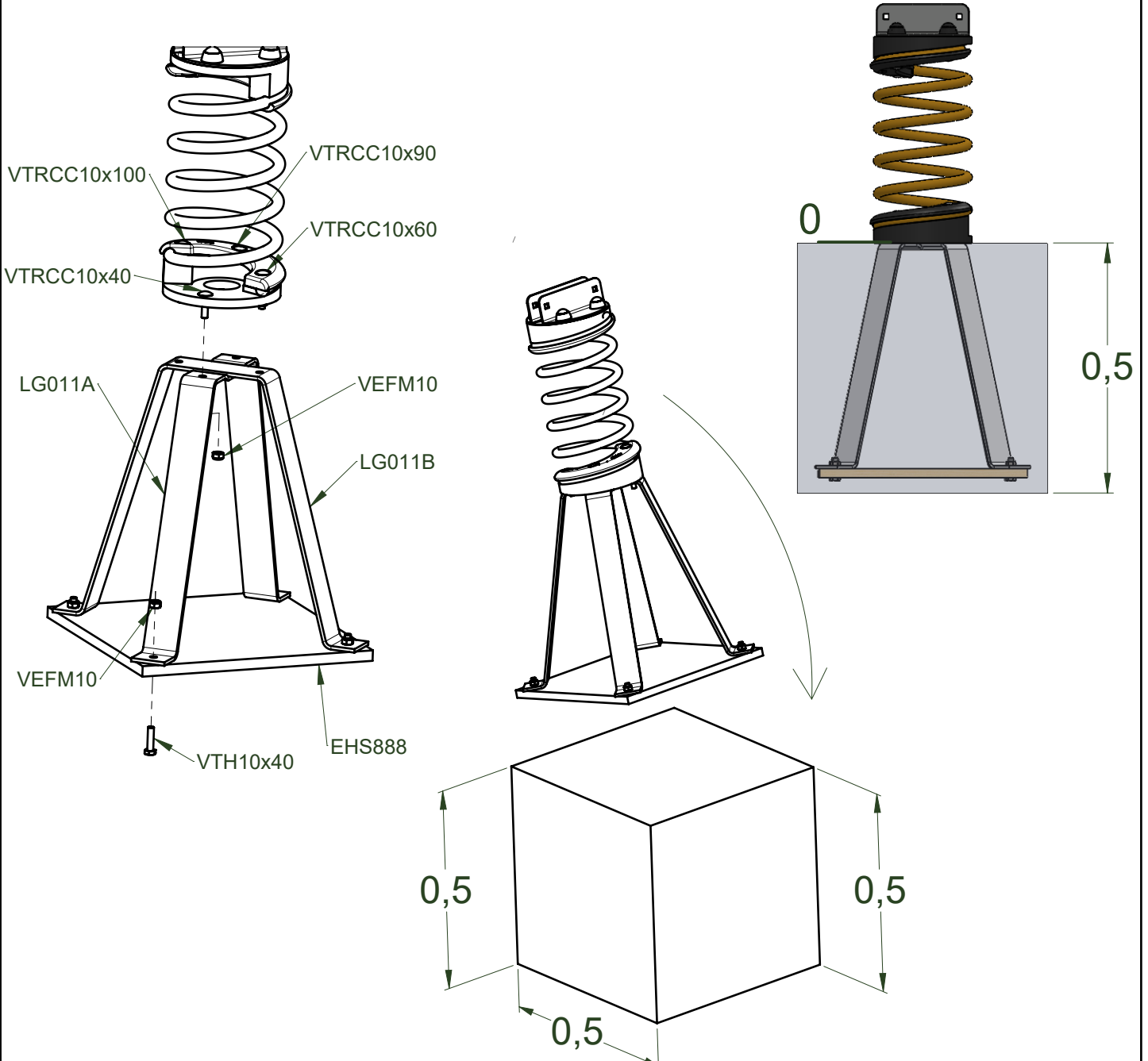
VBT



DESIGNATION	Réf	Qté
CAPSULE NOIRE	M10310N	6
BOUCHON NOIR	M10440N	6
RESSORT JAUNE AVEC EQUERRE	U840J	1
SCOOT METAL PREMONTE	U988	1
ECROU FREIN M10	VEFM10	2
Vis TRCC M10x60	VTRCC10x60	2
PLAQUE IDENTIFICATION	LA000	1

# J829 A

*ProLudic*



  $> 1500 \text{ Kgs/M}^3$

  $< 1500 \text{ Kgs/M}^3$

