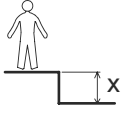
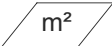




2 → 8

*ProLudic*

N°		
1	< 0.6 m	22 m <sup>2</sup>

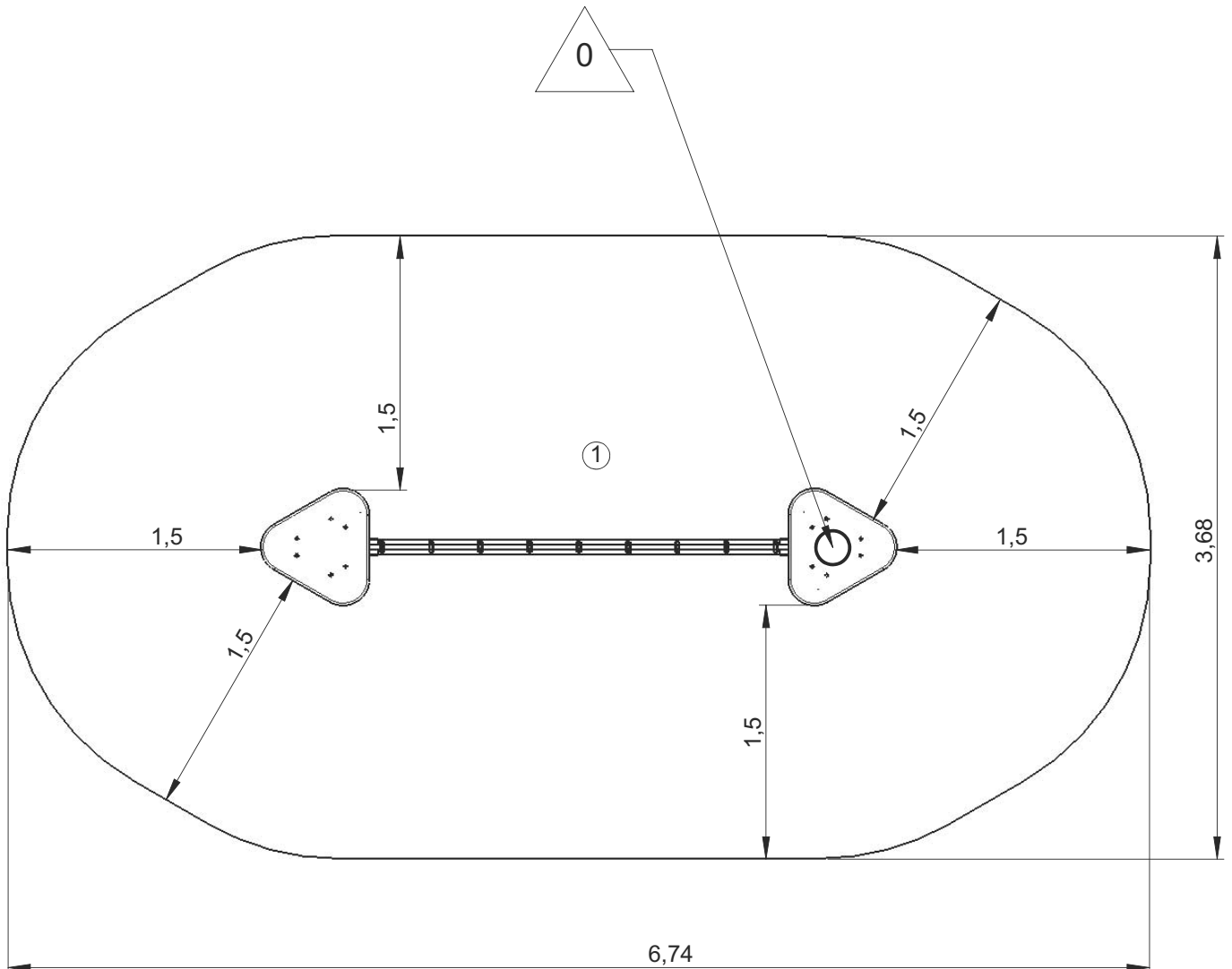
— Zone d'impact  
Impact area  
Area de impacto  
Fallraum  
Valzone

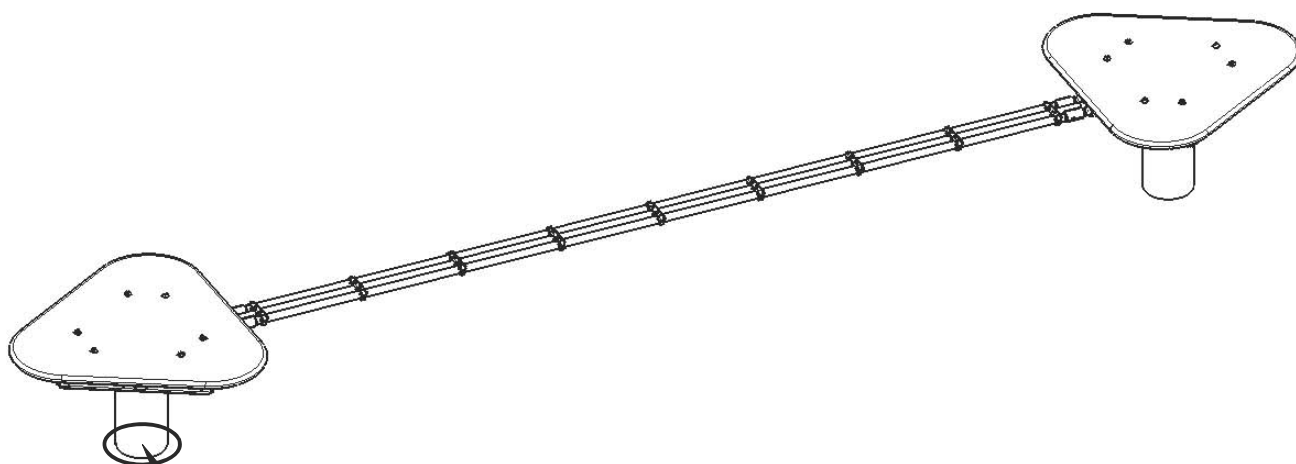


Point de référence  
Setting out point  
Punto de referencia  
Bezugspunkt  
Referentiepunt

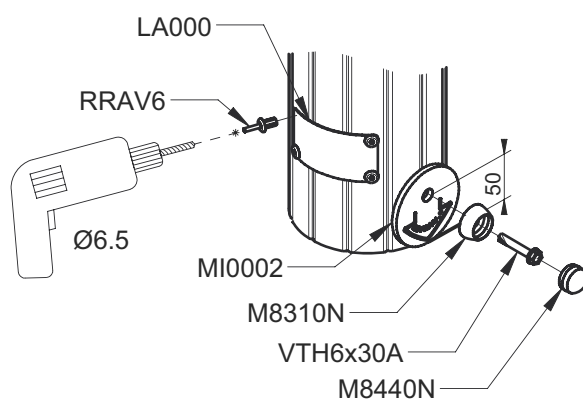
- - - Espace libre  
Free space  
Espacio libre  
Freiraum  
Vrije ruimte

EN1176-1 : 2017





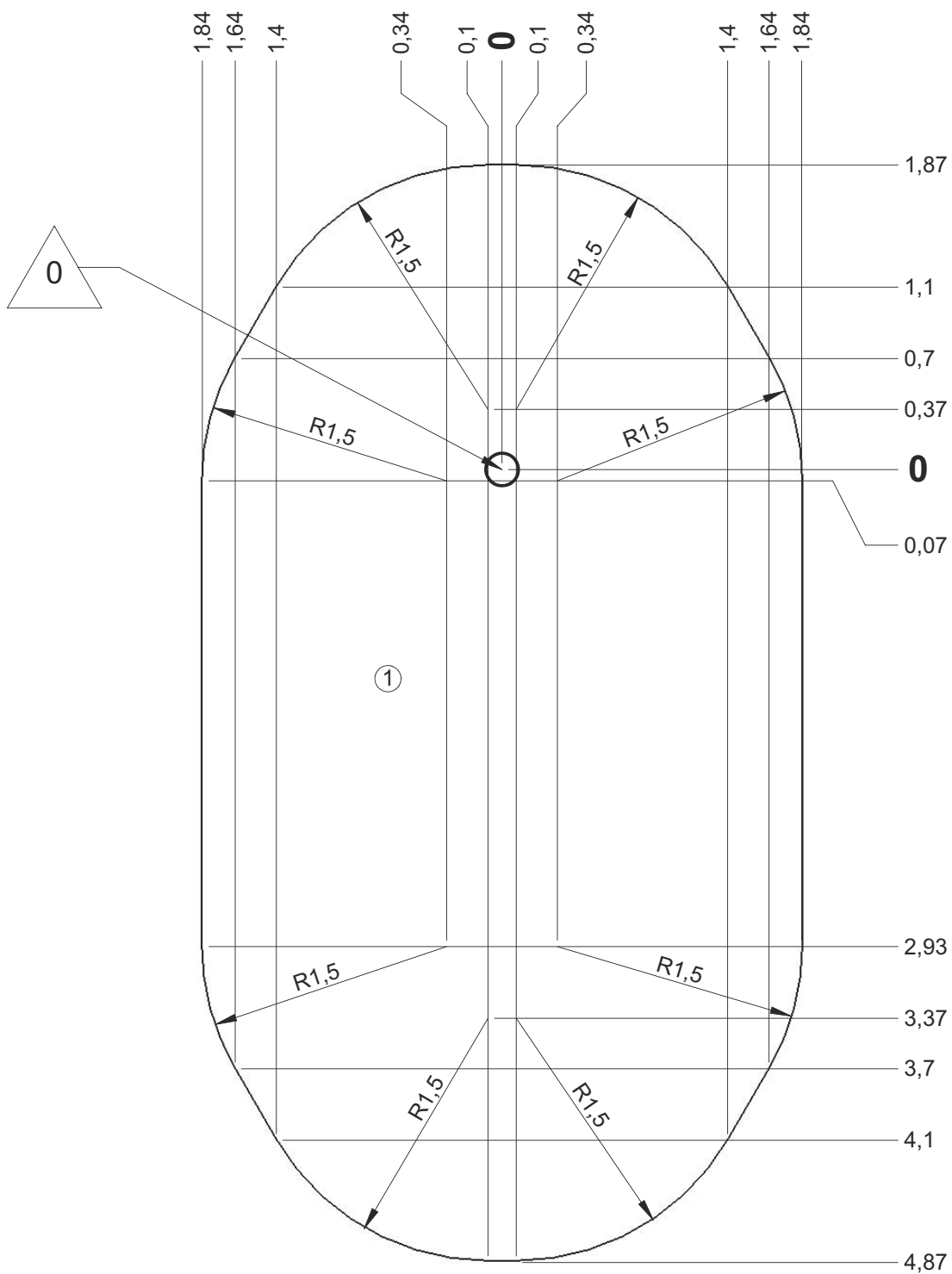
0



— Zone d'impact  
 Impact area  
 Area de impacto  
 Fallraum  
 Valzone

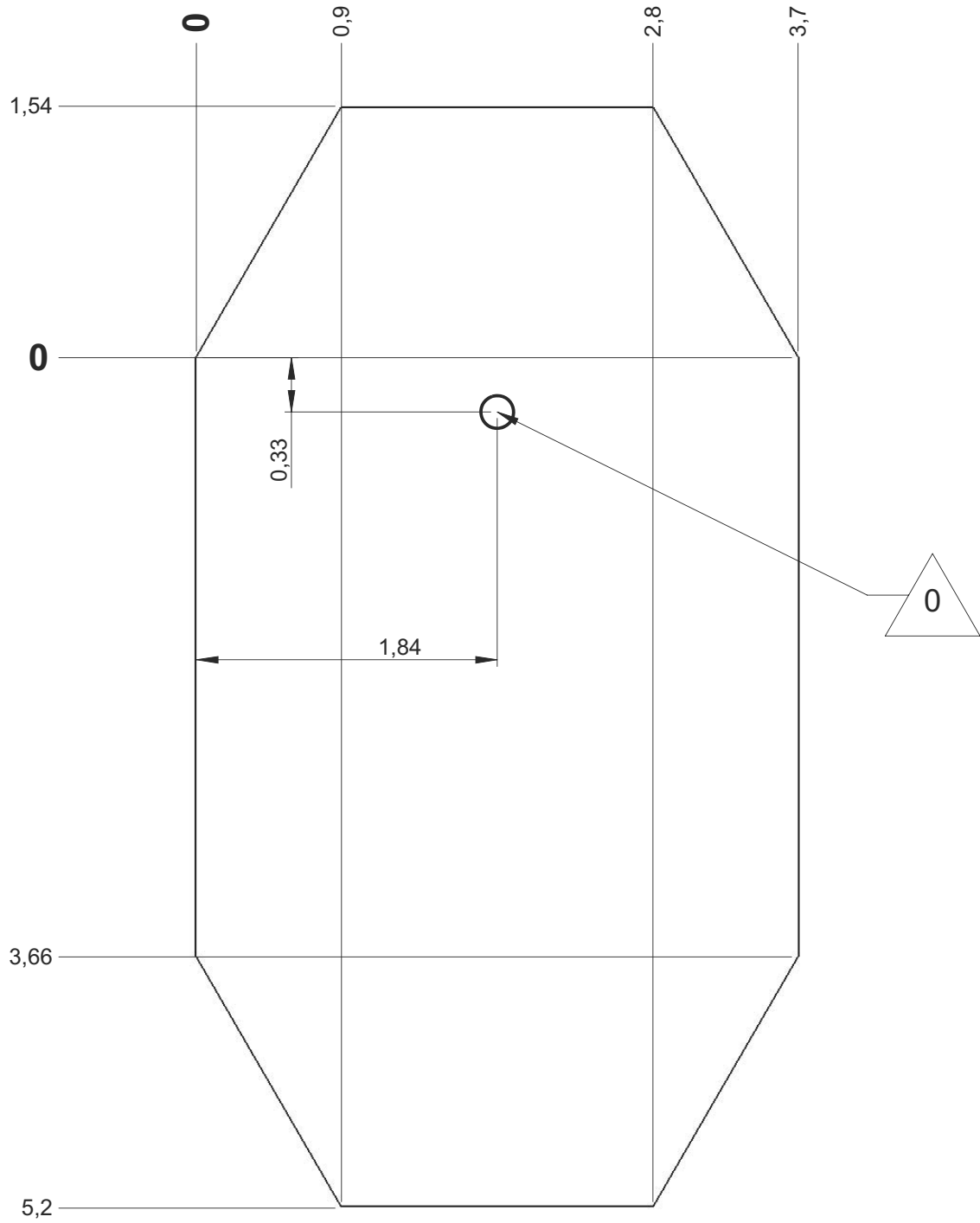
23 m<sup>2</sup>

Sol souple  
 Wetpour  
 Caucho continuo  
 Synthetischer fallschutz  
 Gietvloer

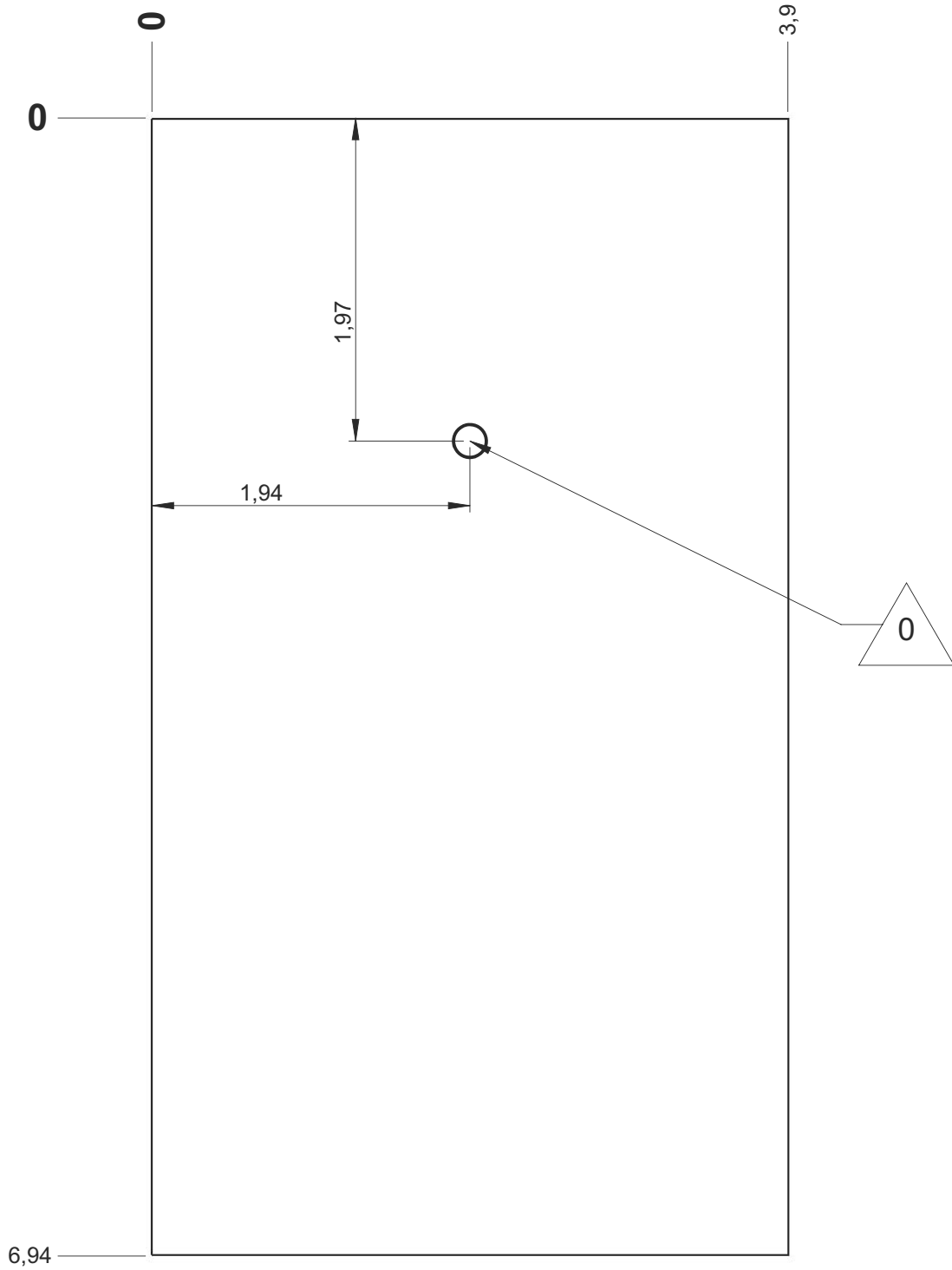


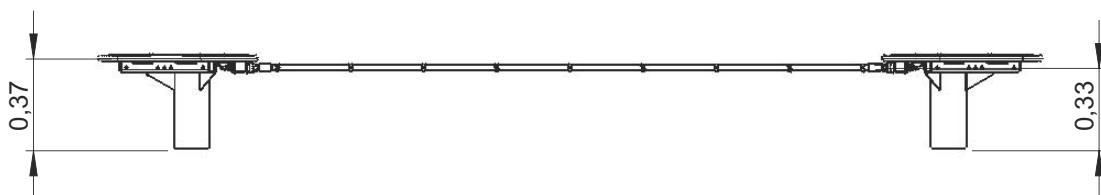
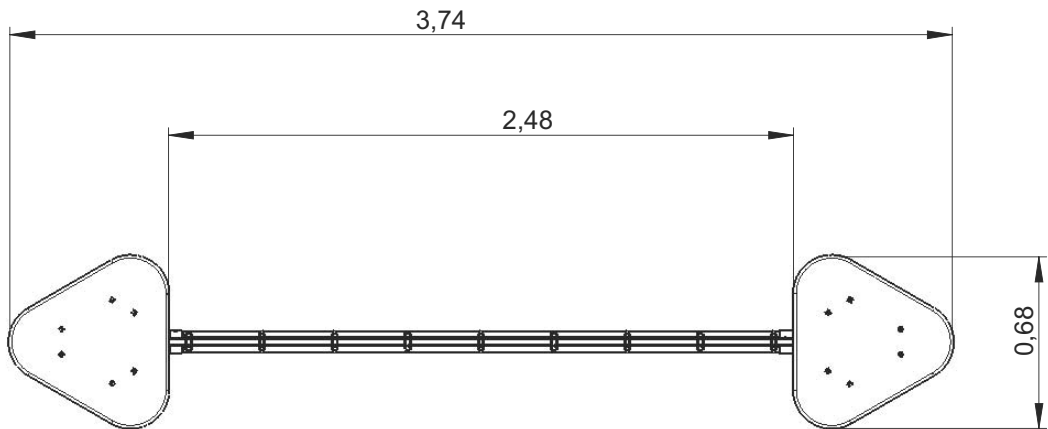
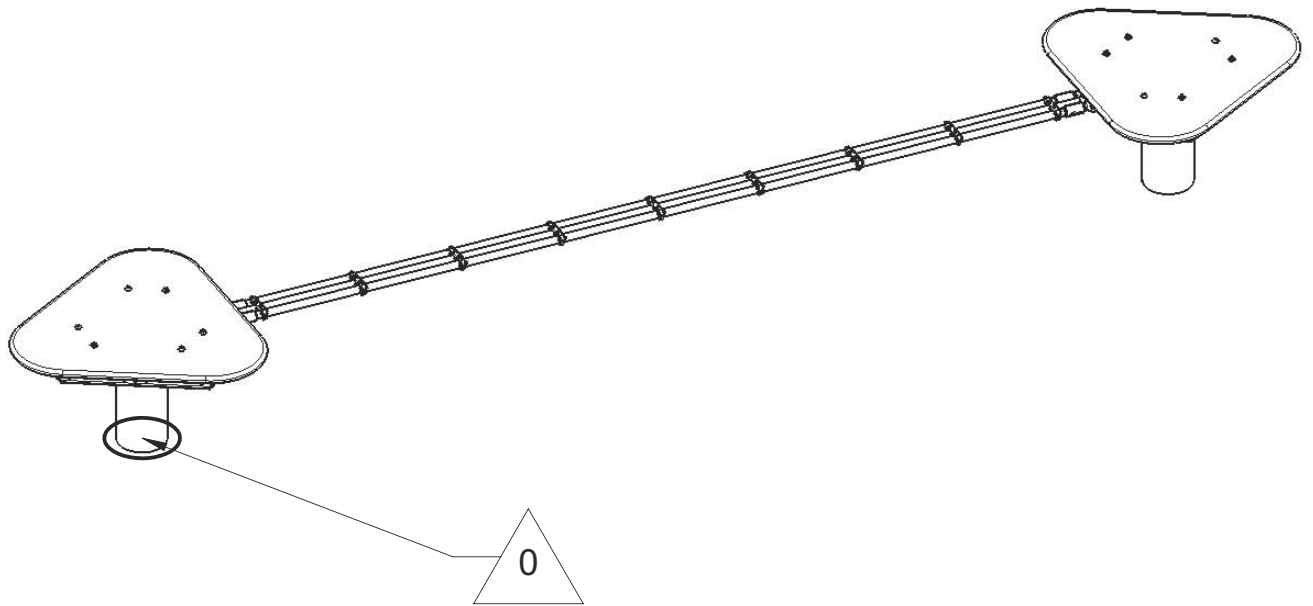
— Dalle béton  
 Concrete pad  
 Solera de hormigon  
 Beton bodenplatte  
 Betonnen bodemplaat

19 m  
 24 m<sup>2</sup>

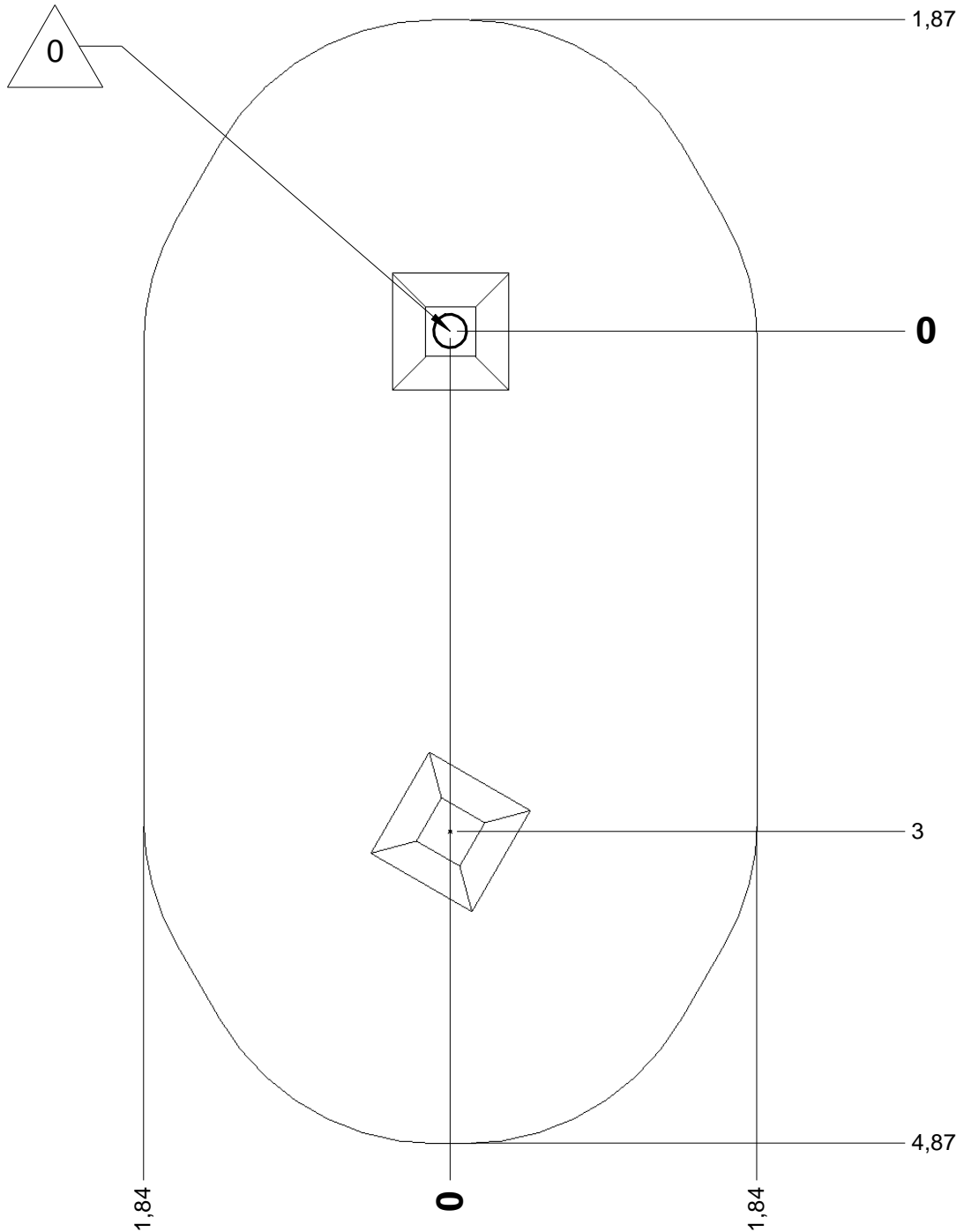




— Sol fluent  
Loos partucule material 26 m  
Arenero  
Loses Bodenmaterial 38 m<sup>2</sup>  
Los bodemmaterial

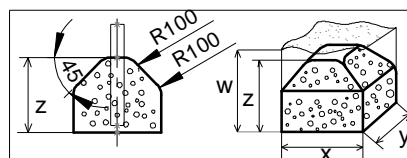







Implantation  
 Footing plan  
 Implantación  
 Fundomentplan  
 Funderingstekening

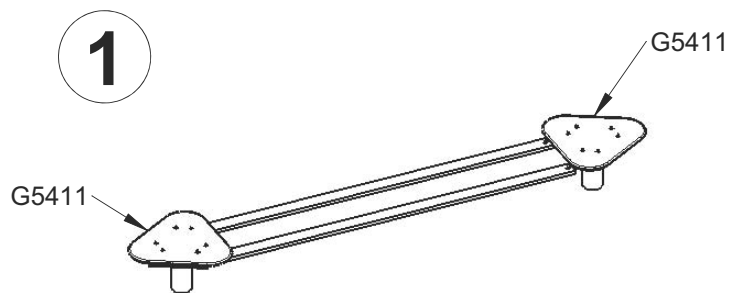


 x2  
 4H  
 0.5 m<sup>3</sup>



	x	y	z	w
	0.3	0.3	0.3	0.6
	0.4	0.4	0.3	0.6
	0.7	0.7	0.5	0.7

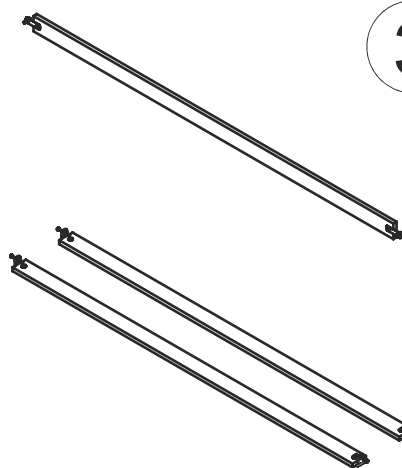




**2**



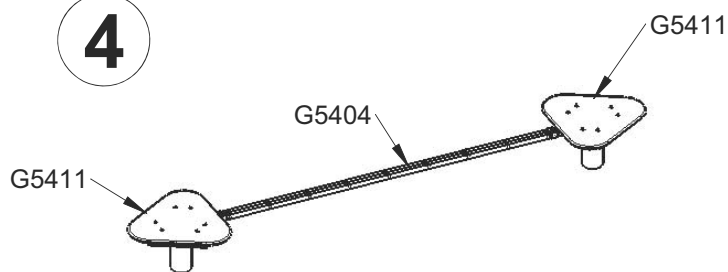
**3**



24H



**4**



Réf	Qté
G5404	1
G5411	2



G5413



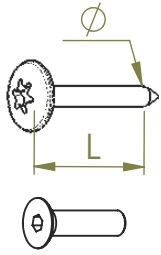
G5414



G5415

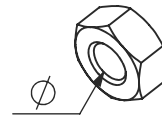


G5416

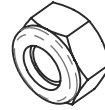


VBT 6 x 30  
 $\varnothing$   $\uparrow$  L (mm)

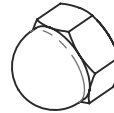
VFHC



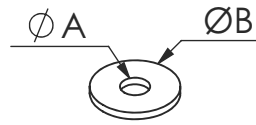
VEC M10  
 $\varnothing$



VEF



VEB



VR6x18  
 $\varnothing A$   $\varnothing B$

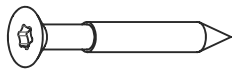
VTHA

**< 14 N.m**

Couple de rupture  
 Breakage torque

**1000 - 1800 RPM**

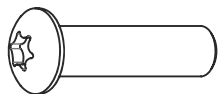
Vitesse de rotation  
 Rotation speed



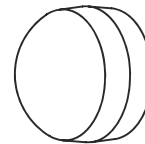
VWT



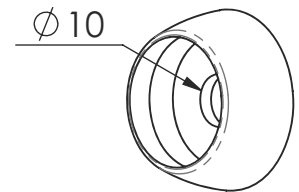
VGC



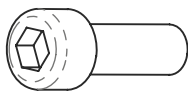
VCBHC



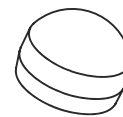
M10 440N



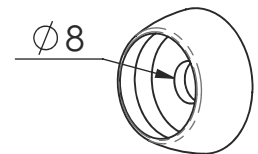
M10 310 N



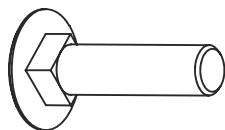
VBTR



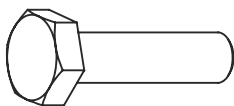
M8440N



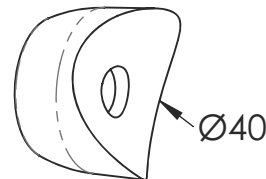
M8310N



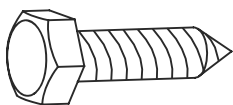
VTRCC



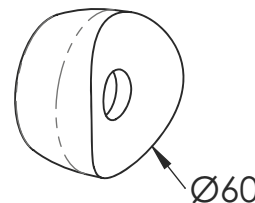
VTH



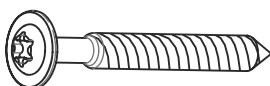
MI2503



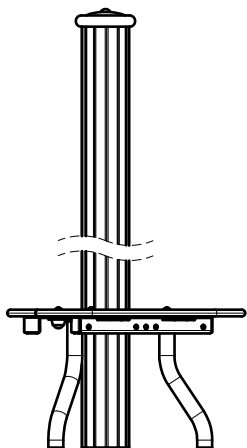
VTF



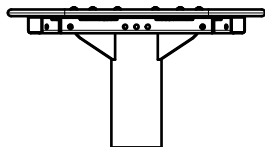
MI2701



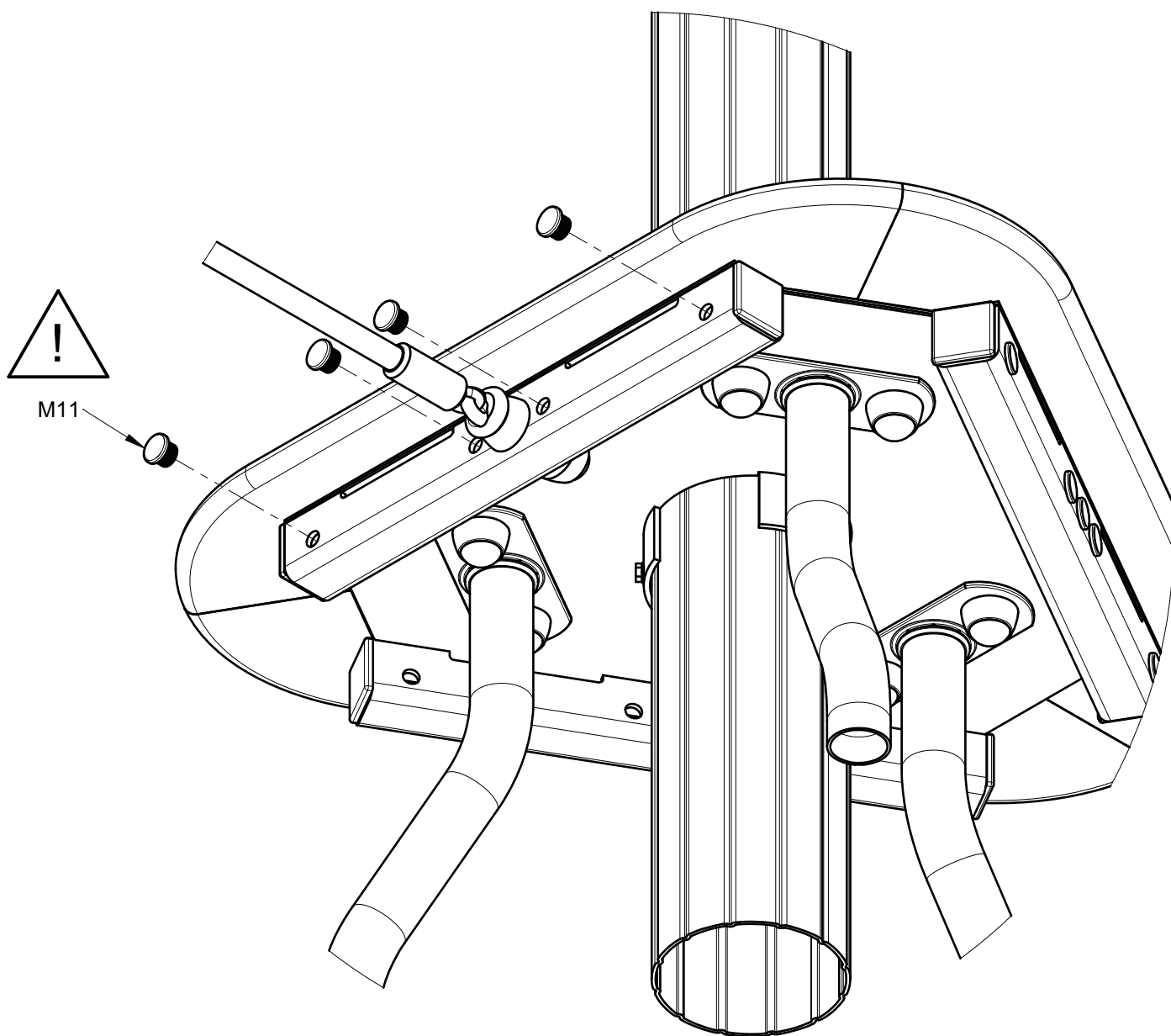
VBT



G5412 / G5412-M

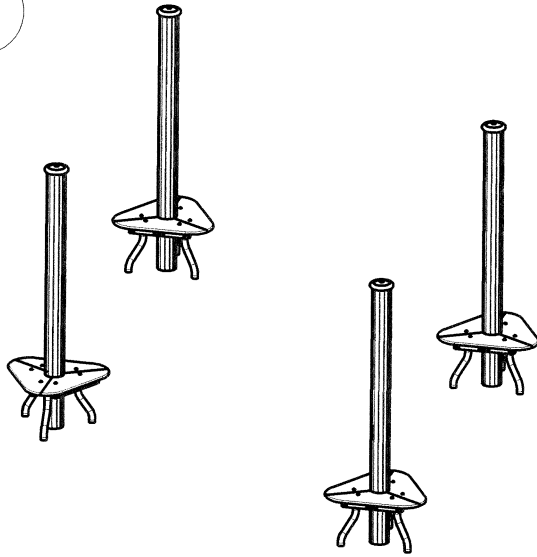


G5411



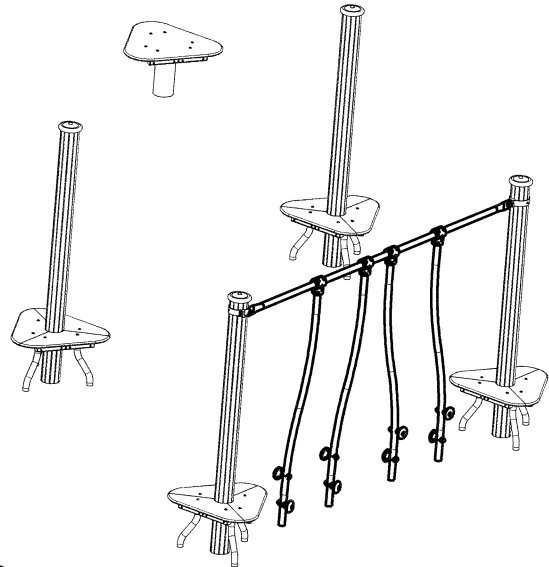
- Méthode d'installation
- Método de Instalacion
- Installation technique
- Procedura di posa
- Montagehinweise

1



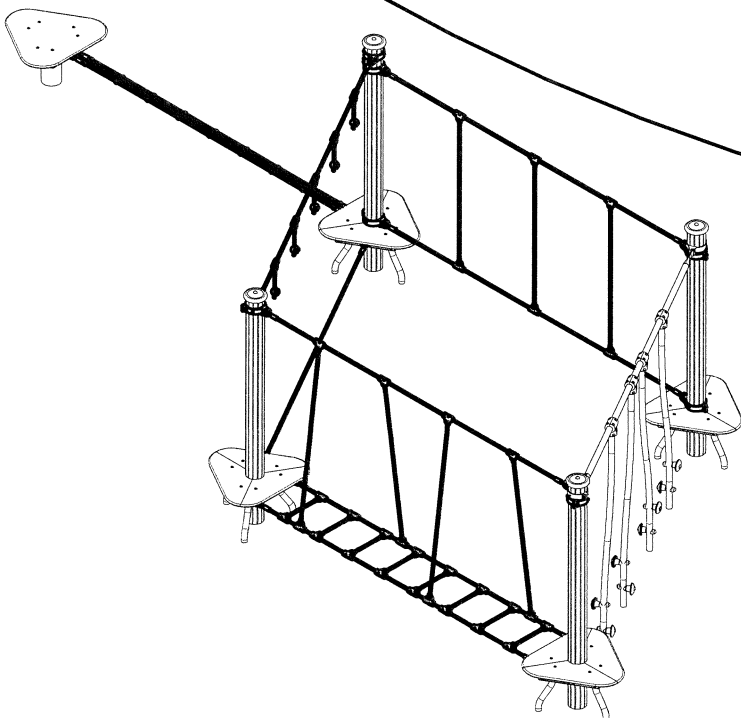
2

- Installer les éléments rigide en premier
- Primero: Instalar los elementos rigidos
- Install the rigid elements first
- Montare per primi gli elementi rigidi
- Zuerst die festen Elemente aufstellen



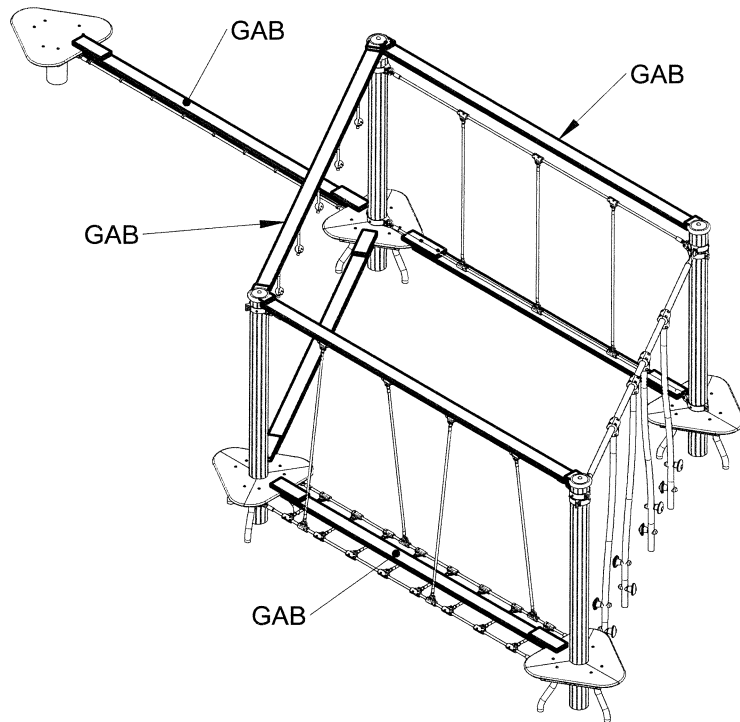
3

- Installer les cordages
- Instalar las cuerdas
- Install the ropes
- Montare le corde o elementi morbidi
- Dann die Elemente mit Seilen



- Voir page de GAB1/GAB2 pour éléments de cordage
- Ver Pàgina GAB1/GAB2 para sol elementos de cuerdas
- See page GAB1/GAB2 for the rope elements
- Vedere Pag. GAB1/GAB2 per gli elementi in corda
- Montagehinweise zu Seileelement sin auf den Seiten GAB1/GAB2

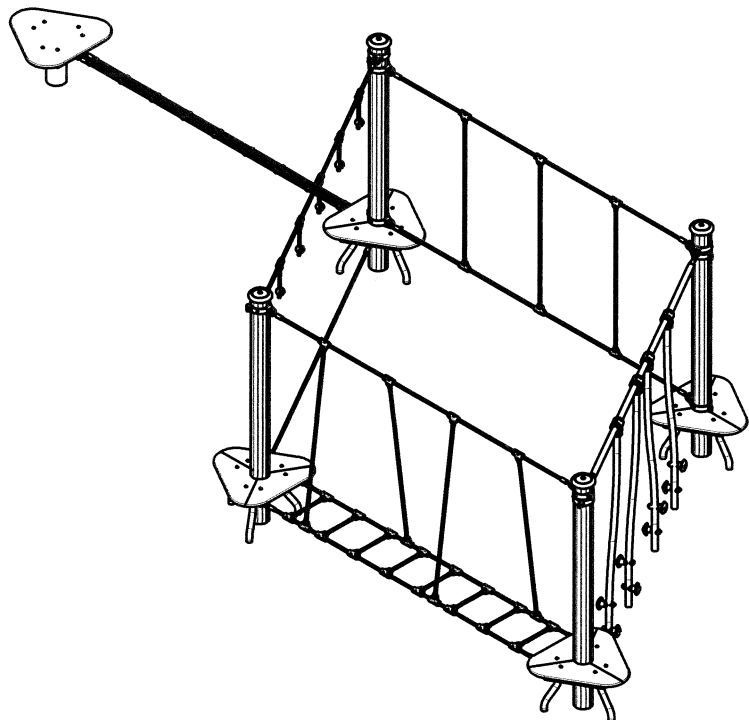
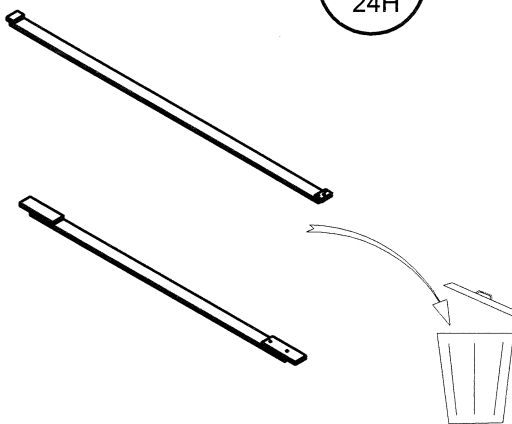
4

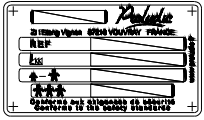


5

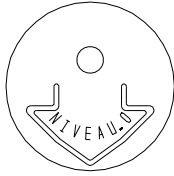


6

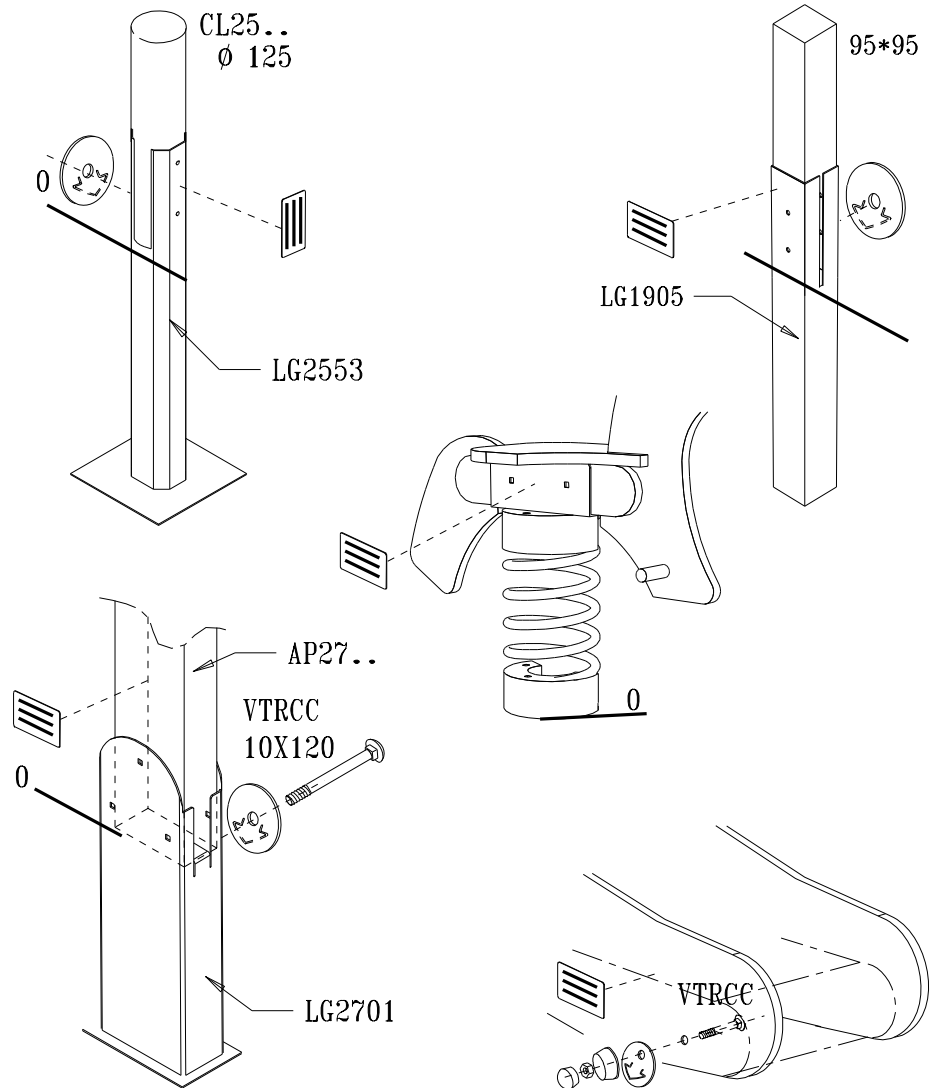
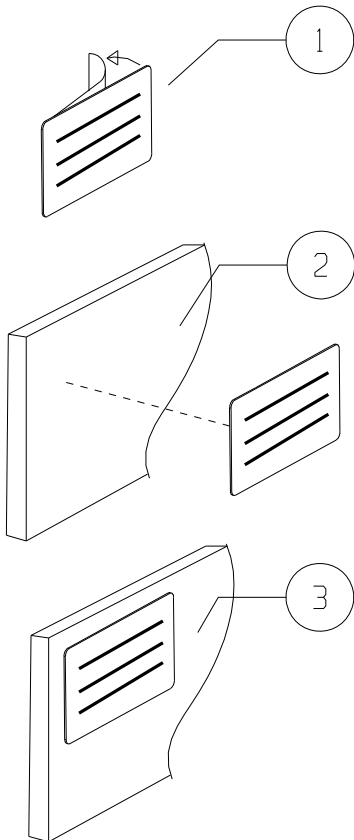
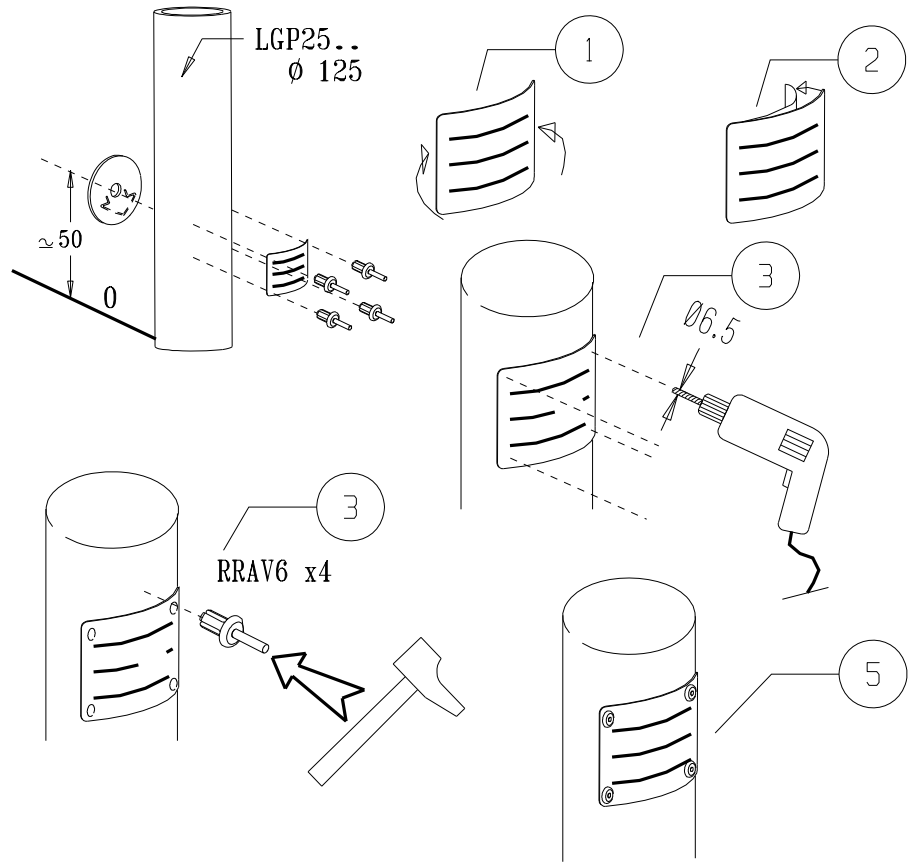




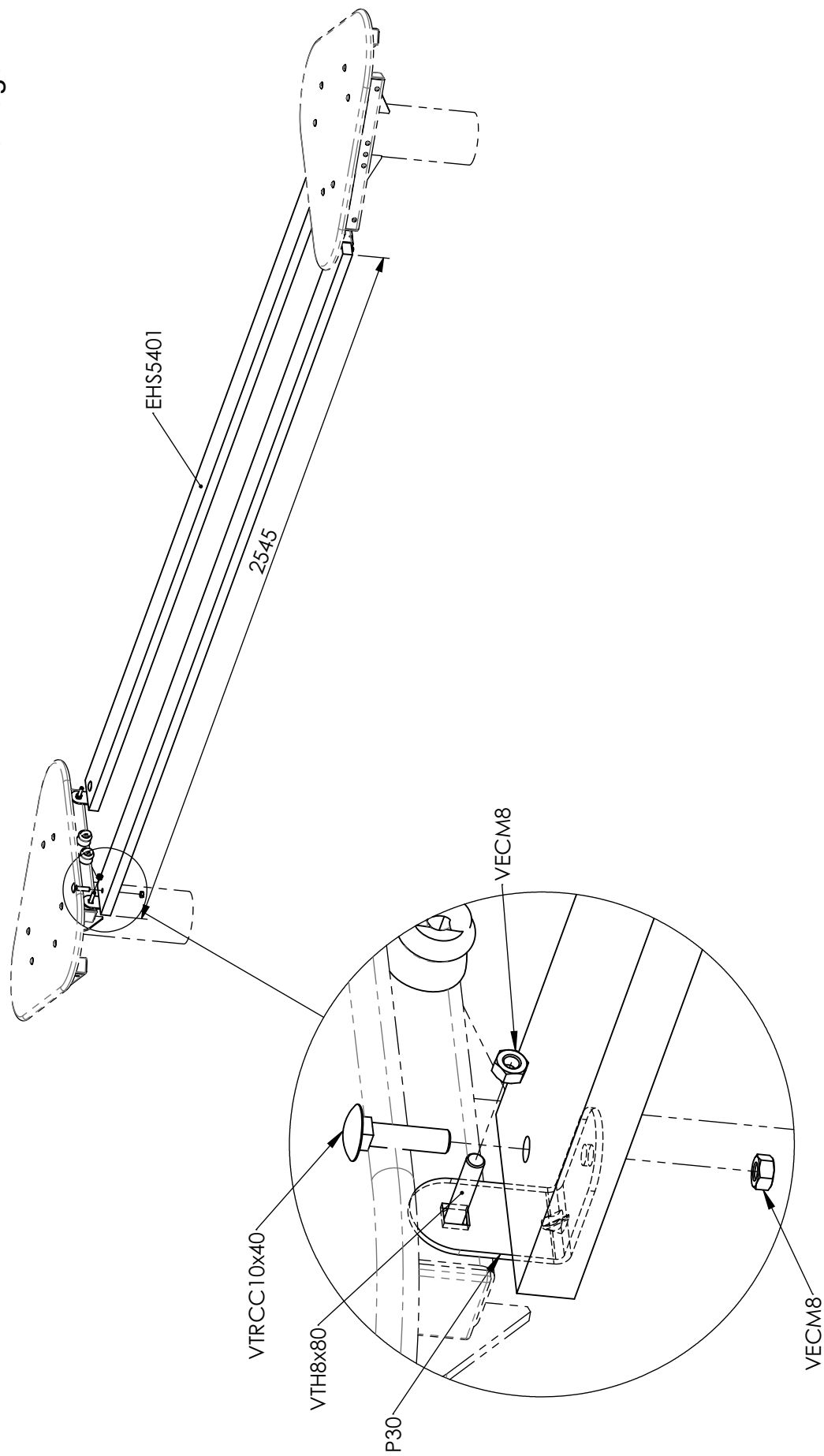
LA000

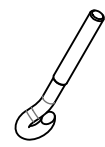
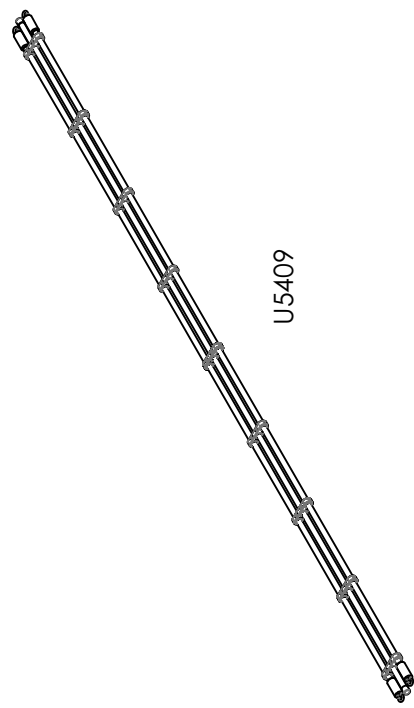
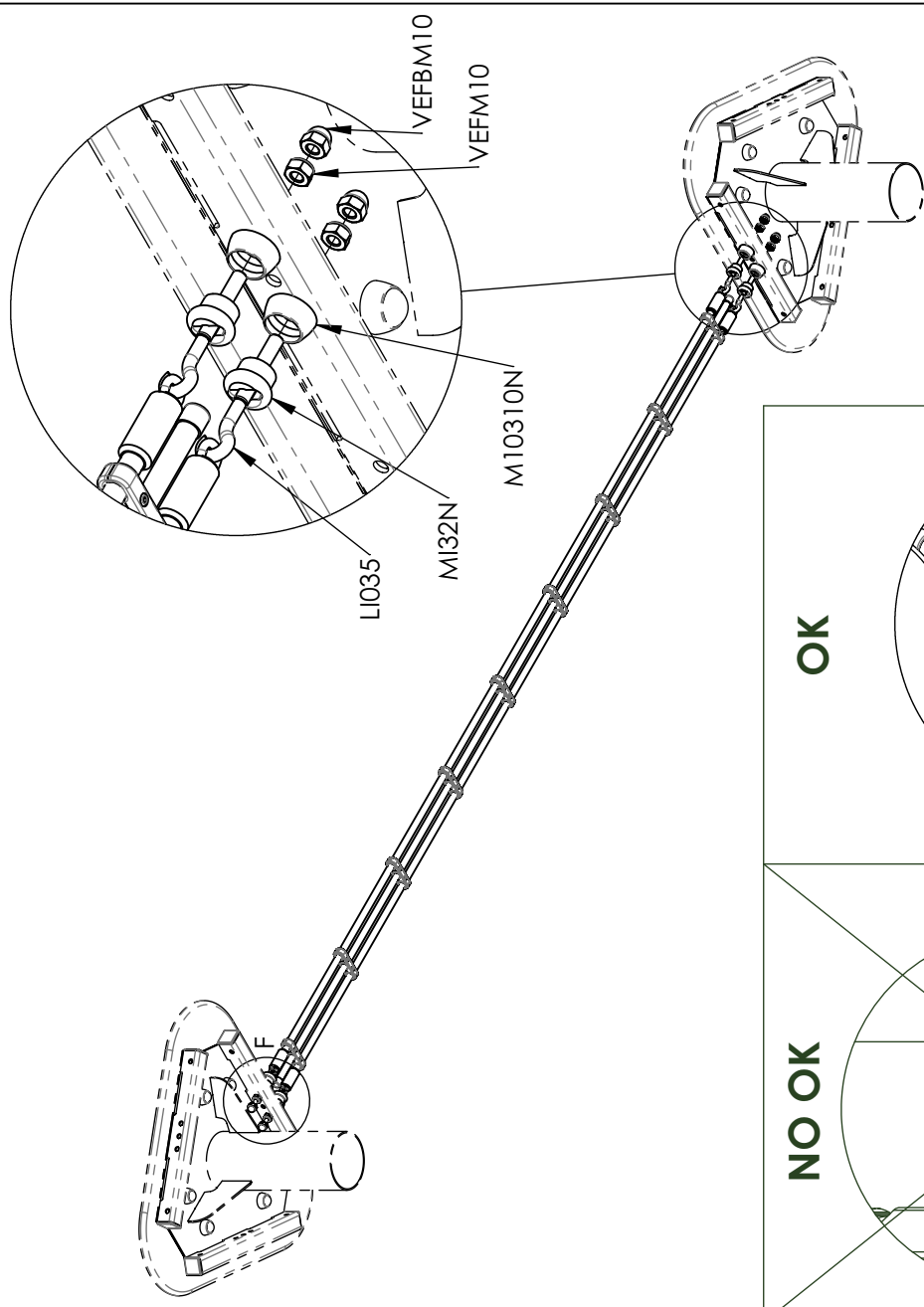


MI0002

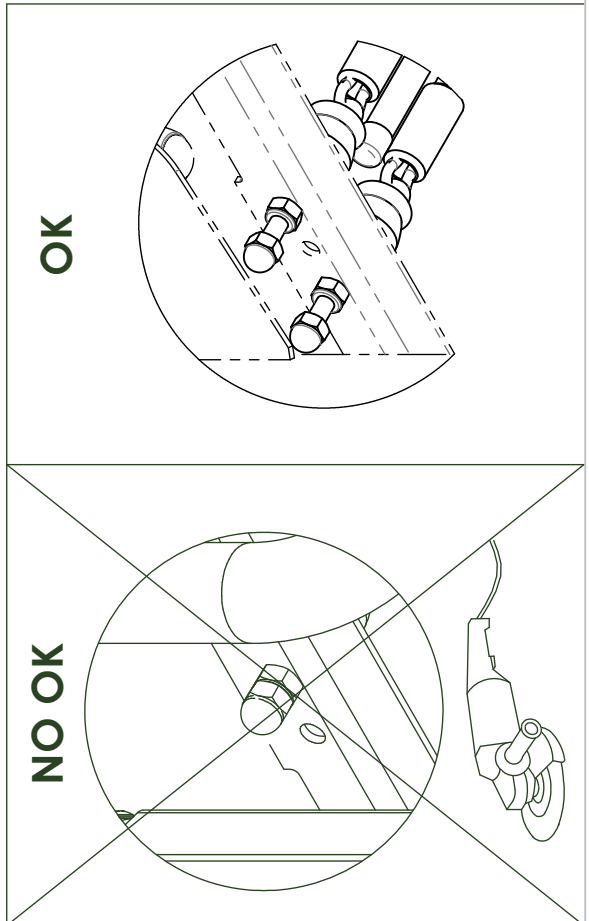


- Méthode d'installation
- Método de Instalacion
- Installation technique
- Procedura di posa
- Montagehinweise

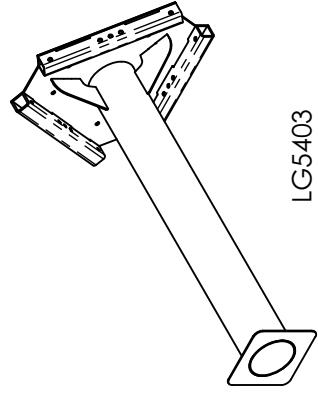
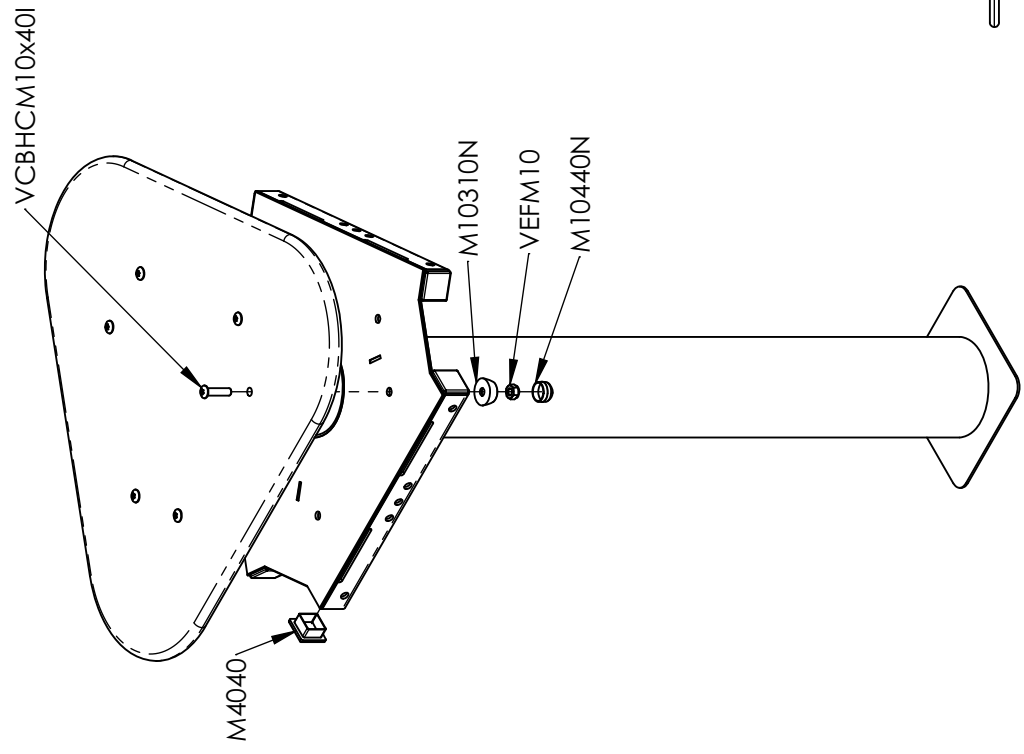




Réf	Qté
LI035	4
M10310N	4
MI32N	4
U5409	1
VEFM10	4
VEFBM10	4



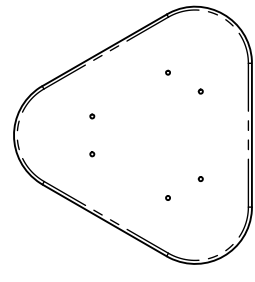




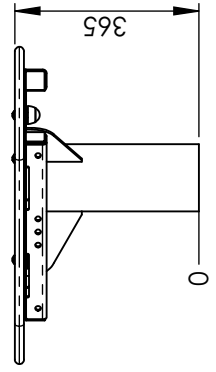
LG5403



M4040



EG5401



Réf	Qté
EG5401O	1
LG5403	1
M4040	6
M10310N	6
M10440N	6
VCBHCM10x40I	6
VEFM10	6