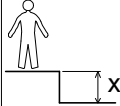
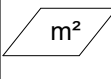


N°		
1	1 m	1.5 m <sup>2</sup>
2	1.2 m	2.5 m <sup>2</sup>
3	1.4 m	28.5 m <sup>2</sup>

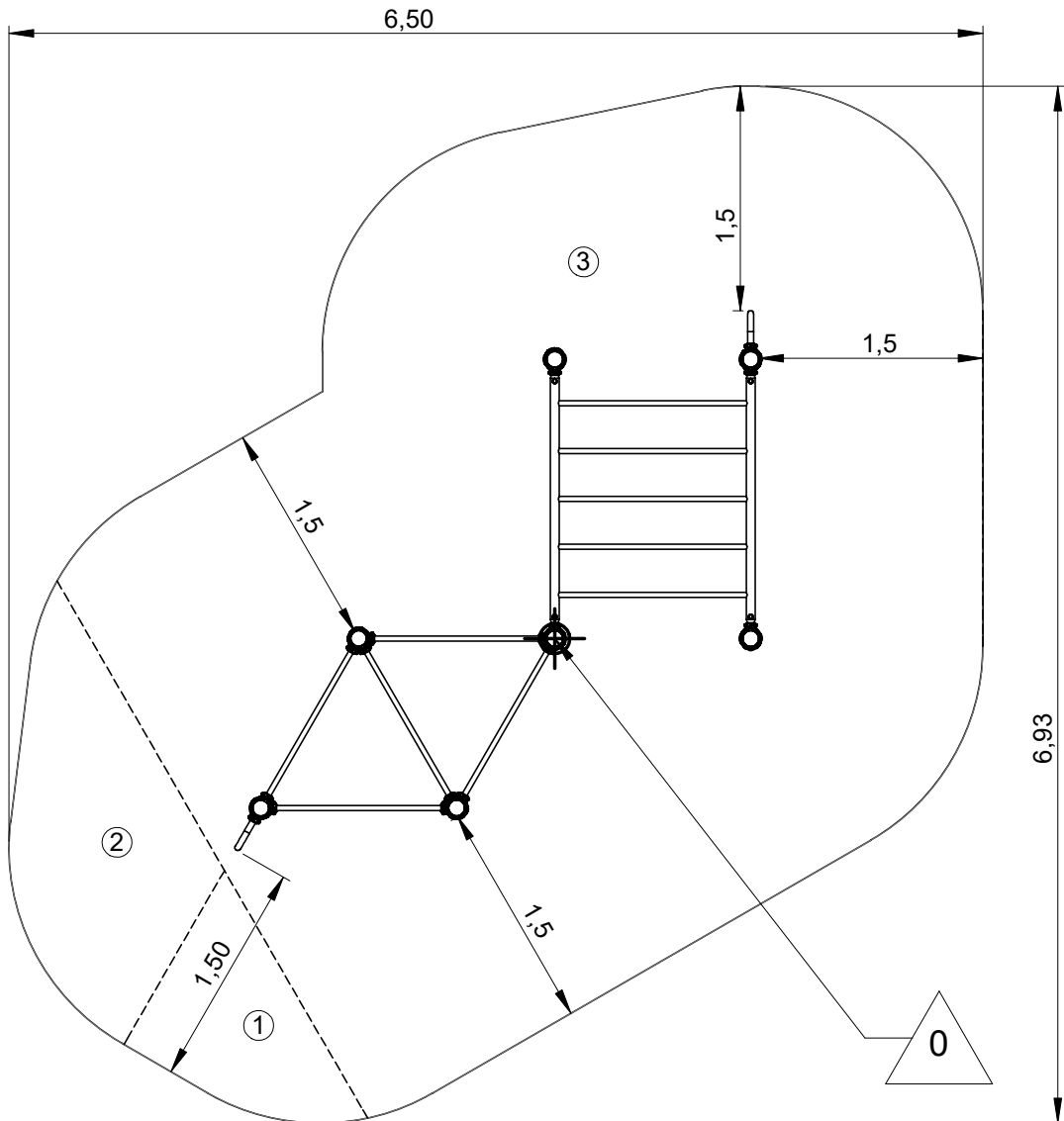
— Zone d'impact  
Impact area  
Area de impacto  
Fallraum  
Valzone

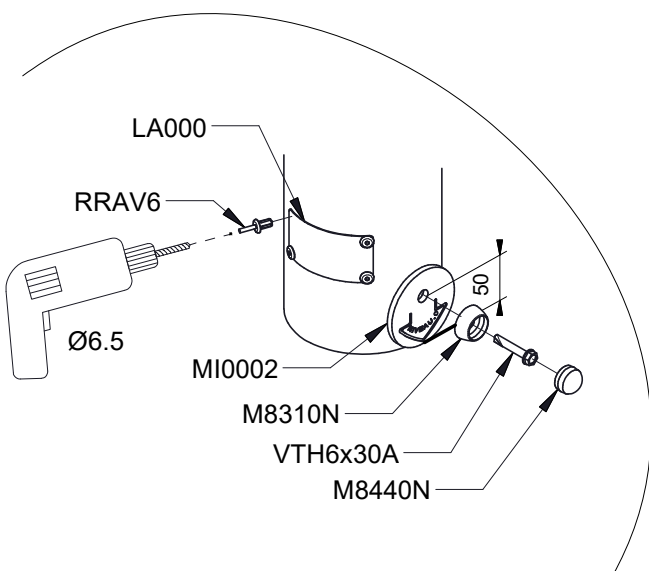
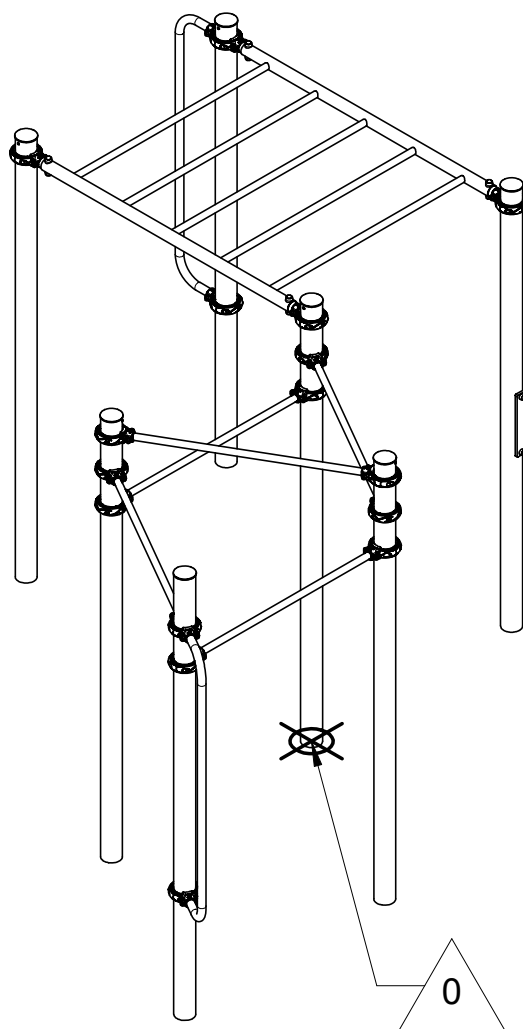


Point de référence  
Setting out point  
Punto de referencia  
Bezugspunkt  
Referentiepunt

- - - Espace libre  
Free space  
Espacio libre  
Freiraum  
Vrije ruimte

EN16630:2015





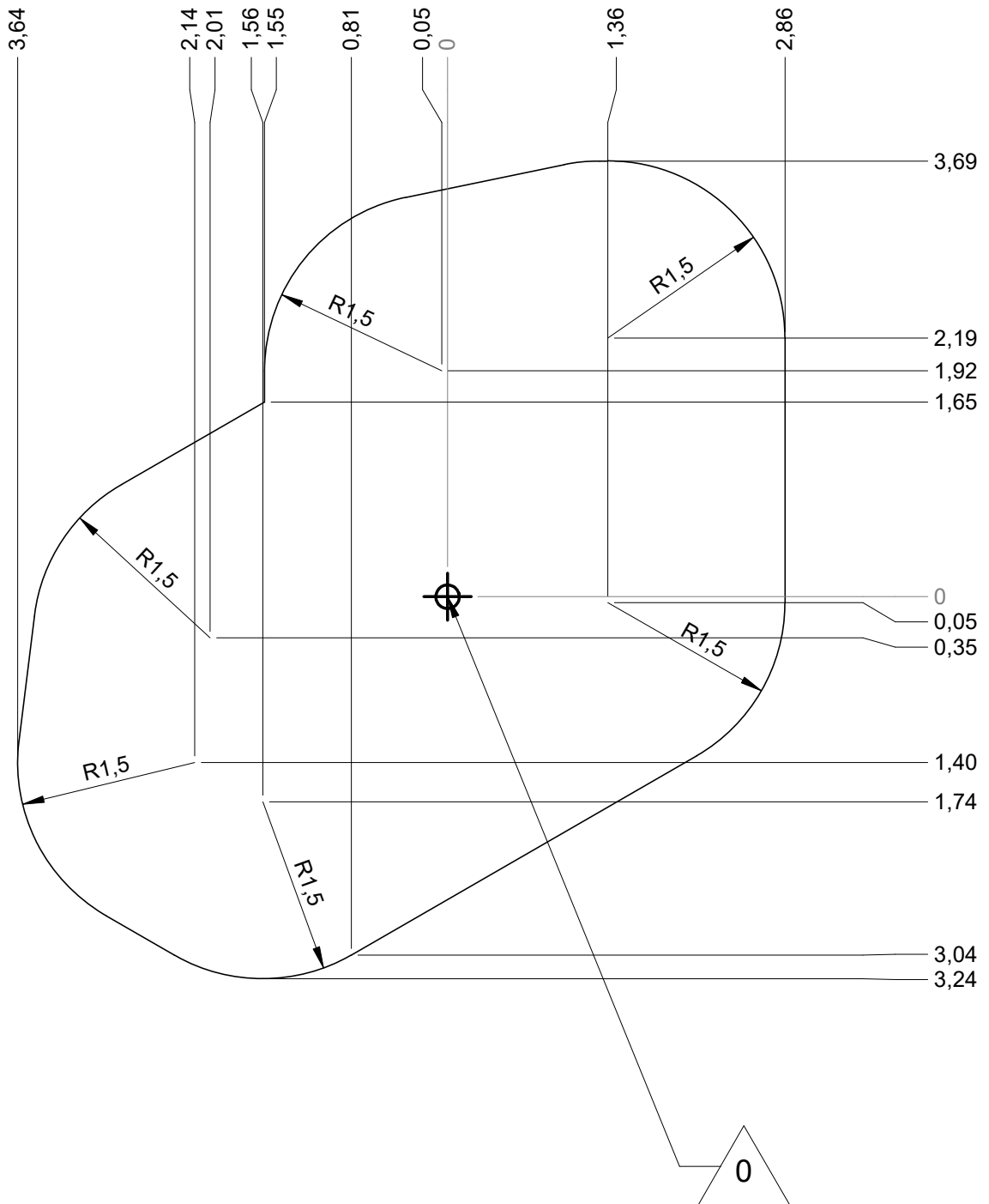
LA000



MI0002

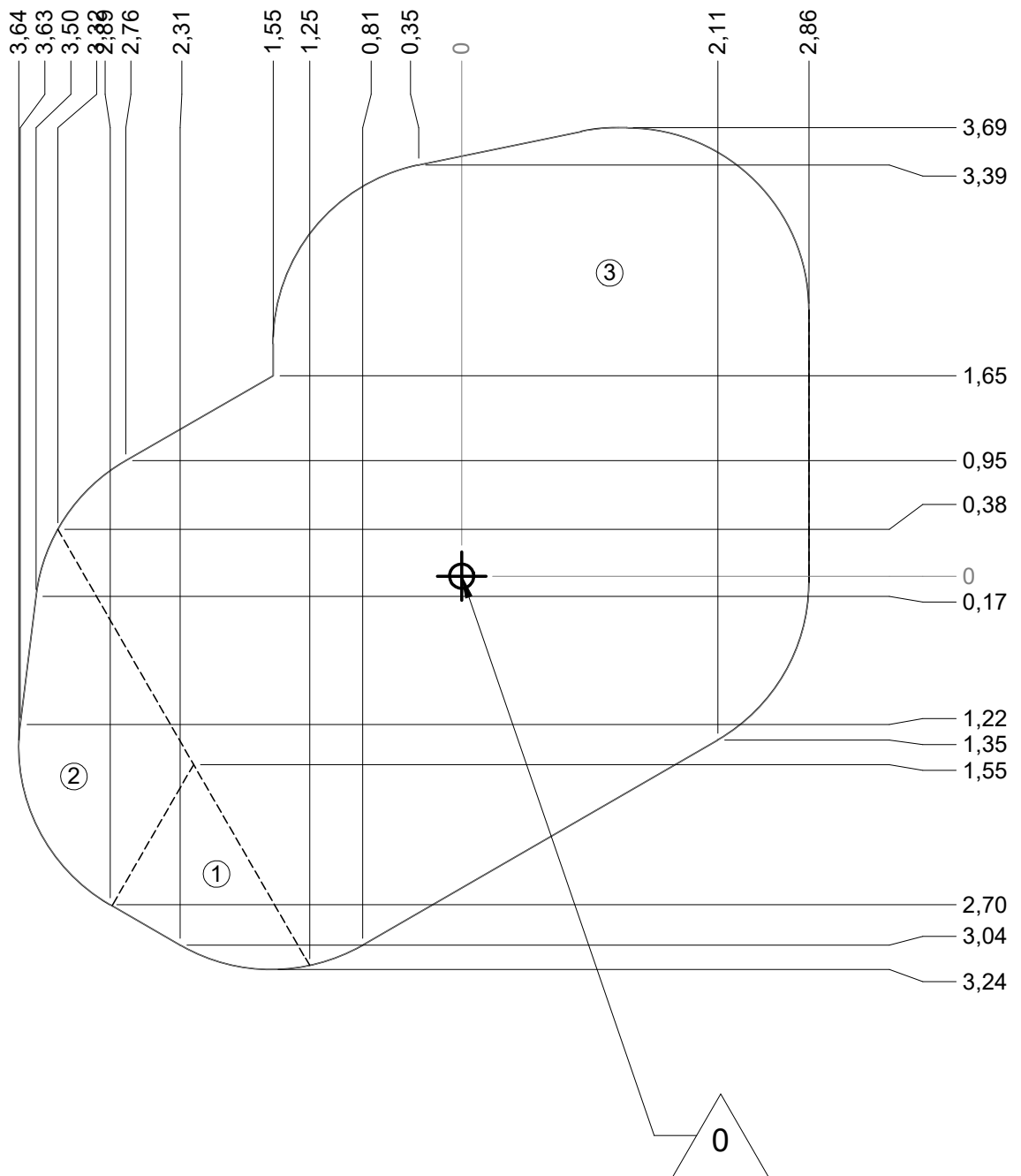
— Zone d'impact  
 Impact area  
 Area de impacto  
 Fallraum  
 Valzone

**32.5 m<sup>2</sup>**



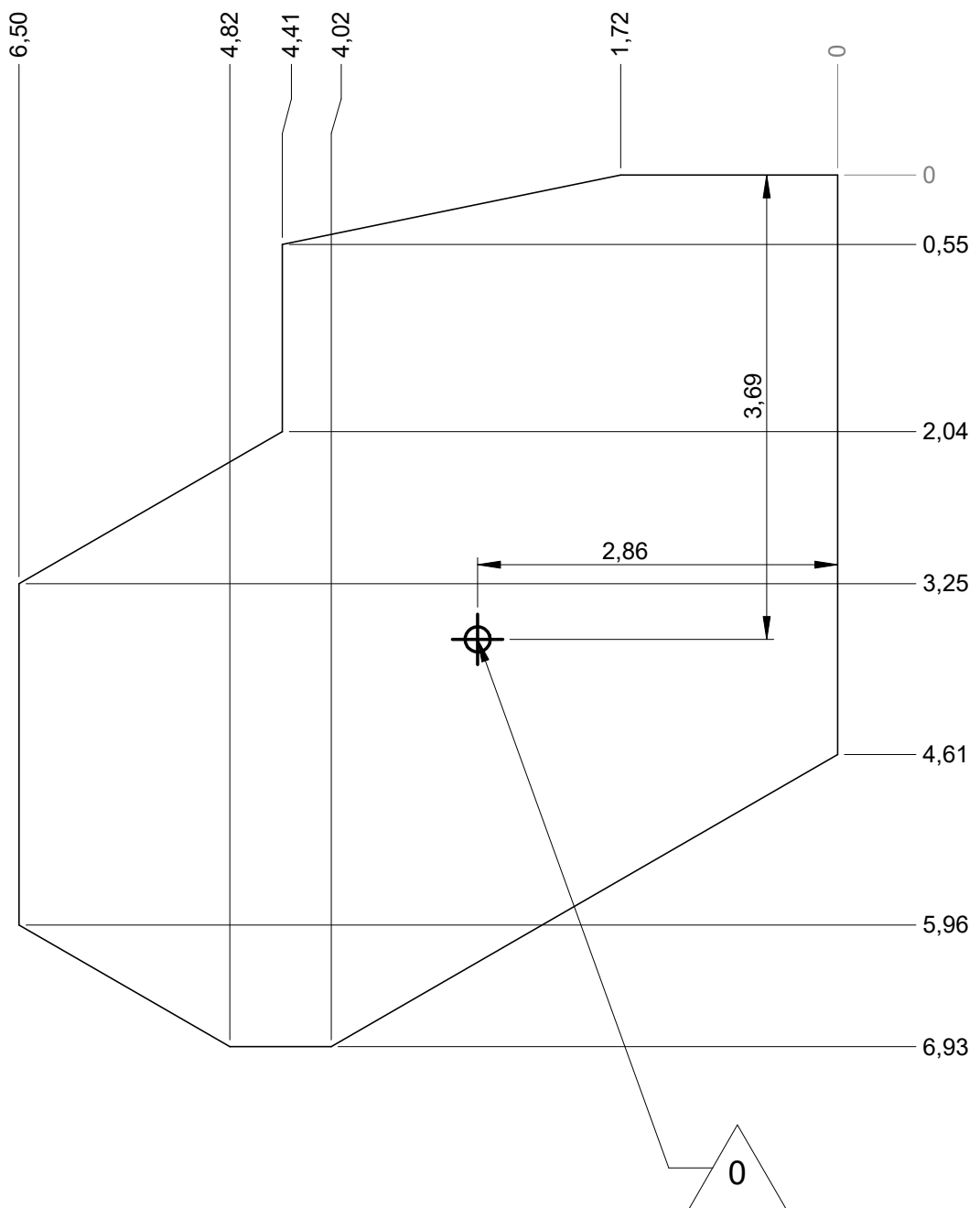
— Sol souple  
 Wetpour  
 Caucho continuo  
 Synthetischer Fallschutz  
 Gietvloer

32.5 m<sup>2</sup>



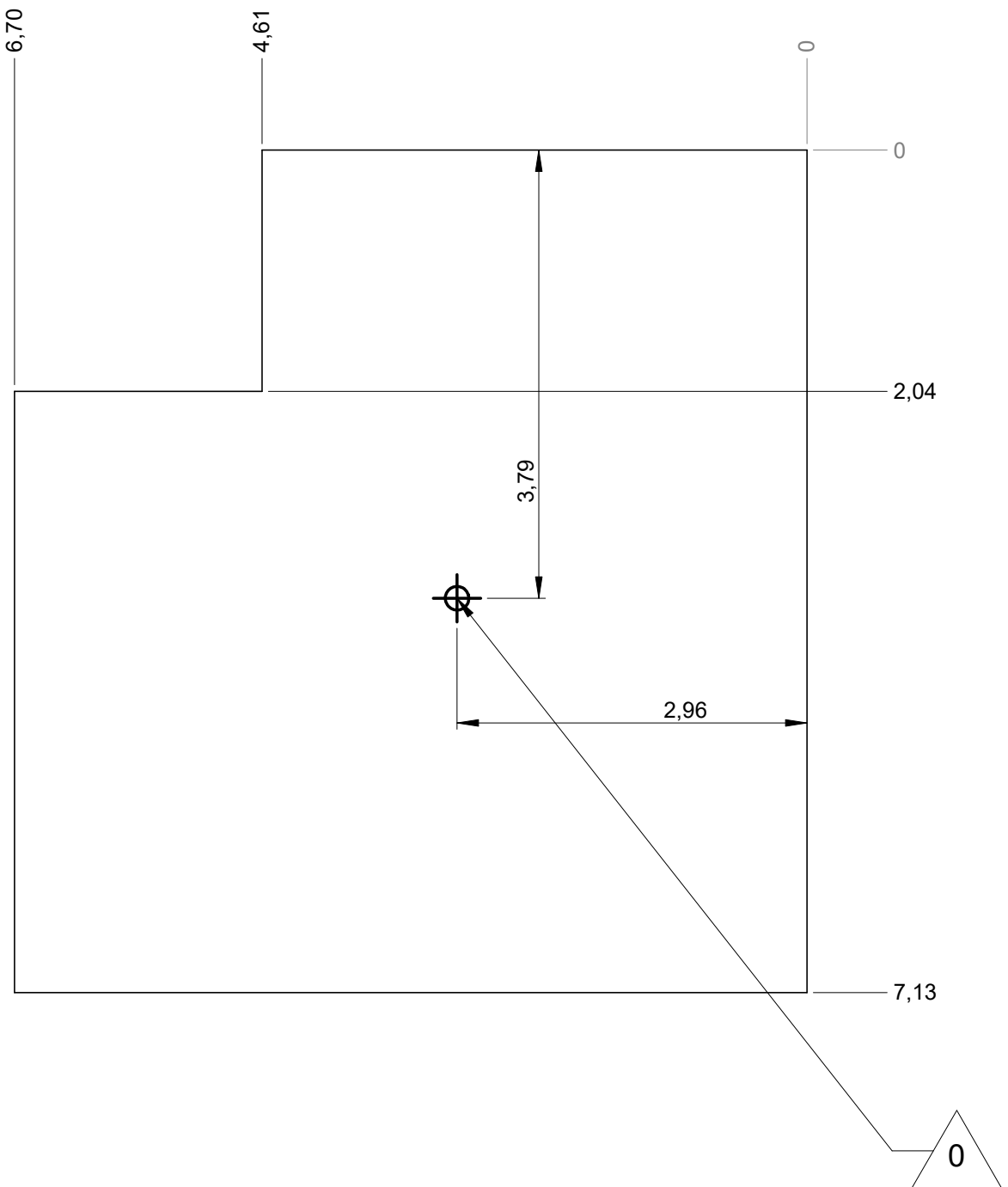
— Dalle béton  
 Concrete pad  
 Solera de hormigon  
 Beton Bodenplatte  
 Betonnen bodemplaat

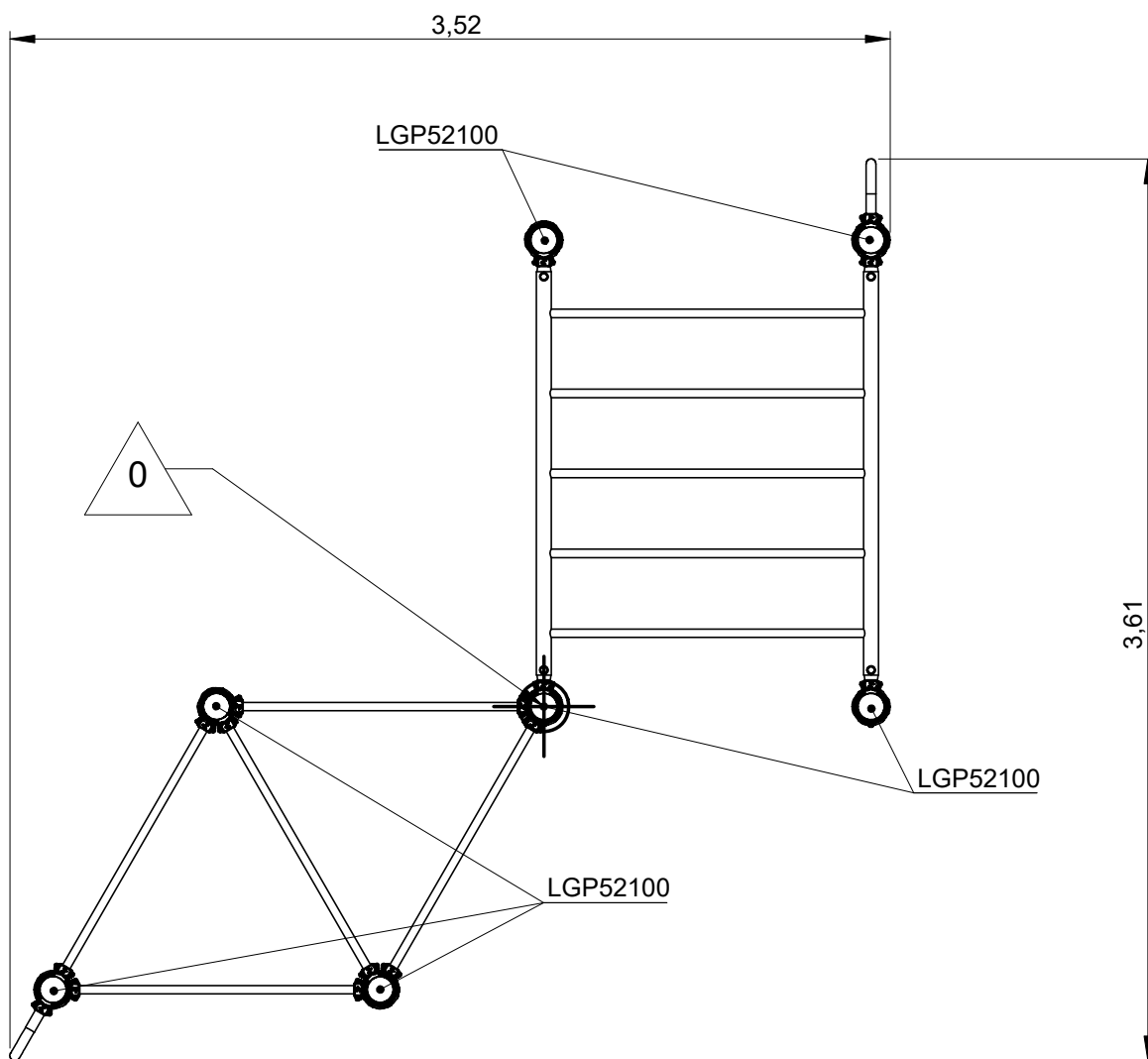
26 m  
 40 m<sup>2</sup>



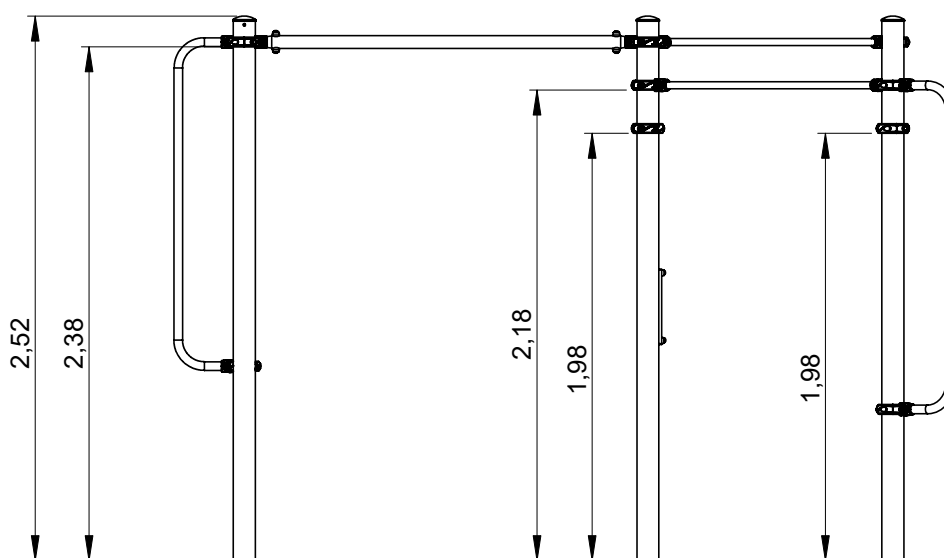
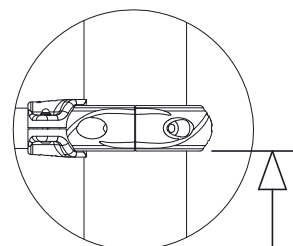
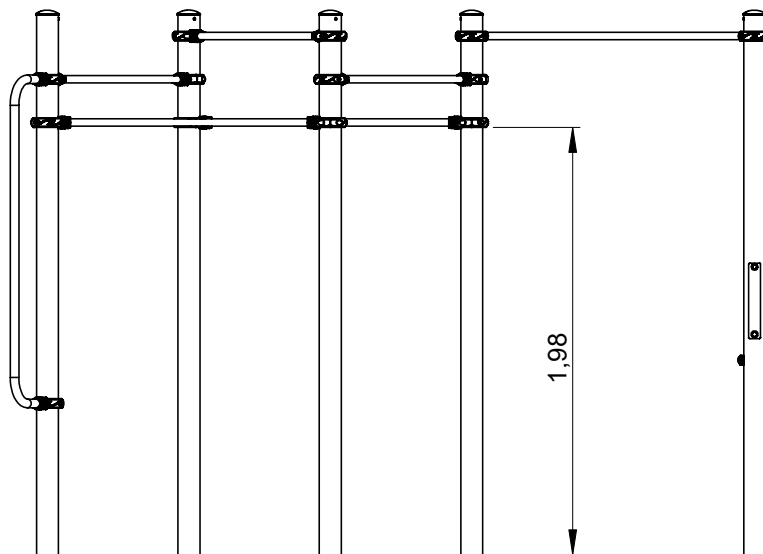
— Sol fluent  
 Loos partucule material  
 Arenero  
 Loses Bodenmaterial  
 Los bodemmaterialaal

**29 m**  
**43.5 m<sup>2</sup>**

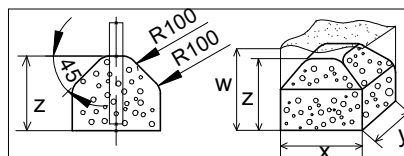
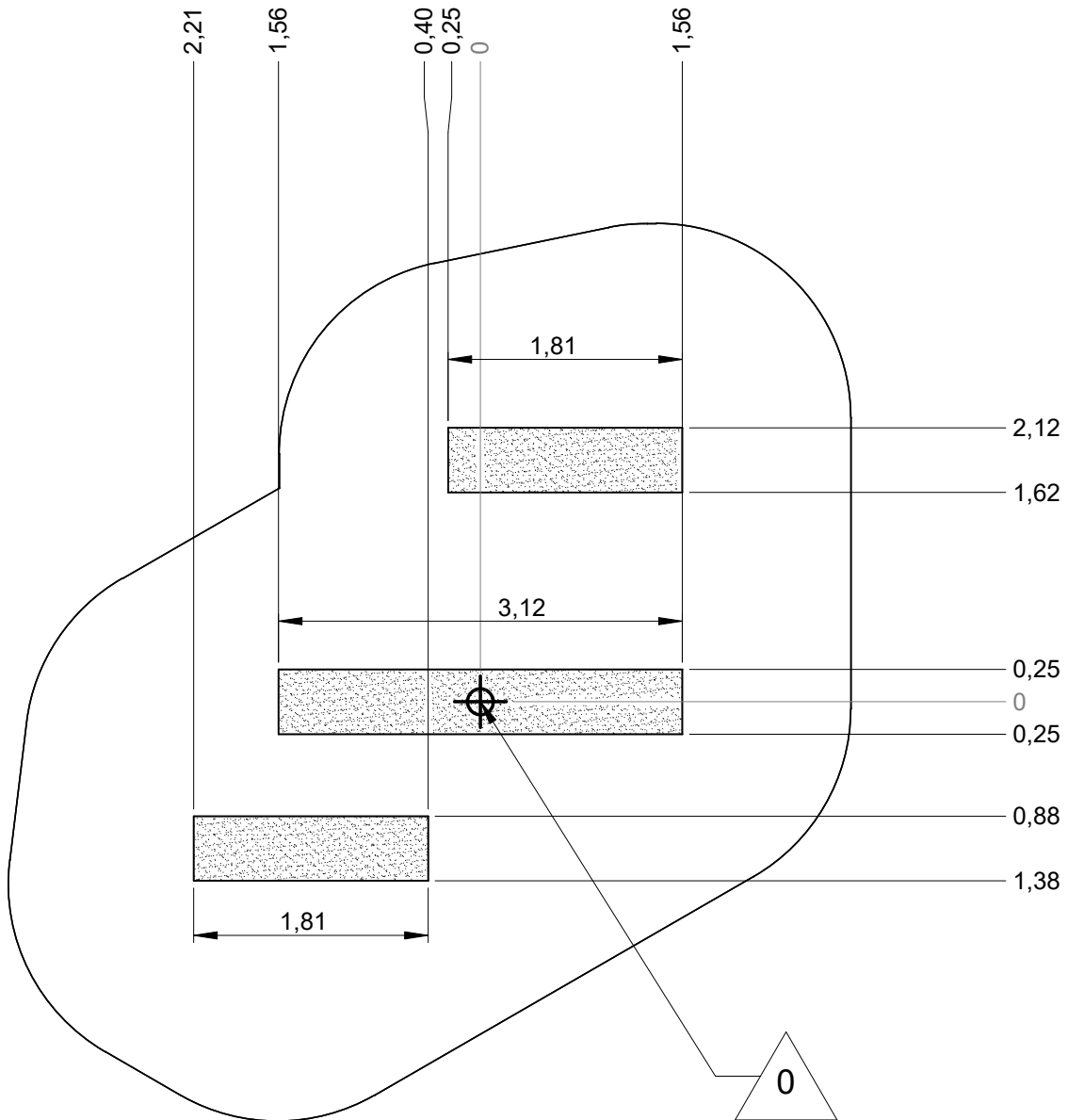




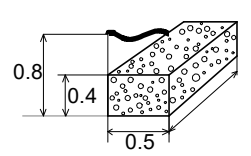




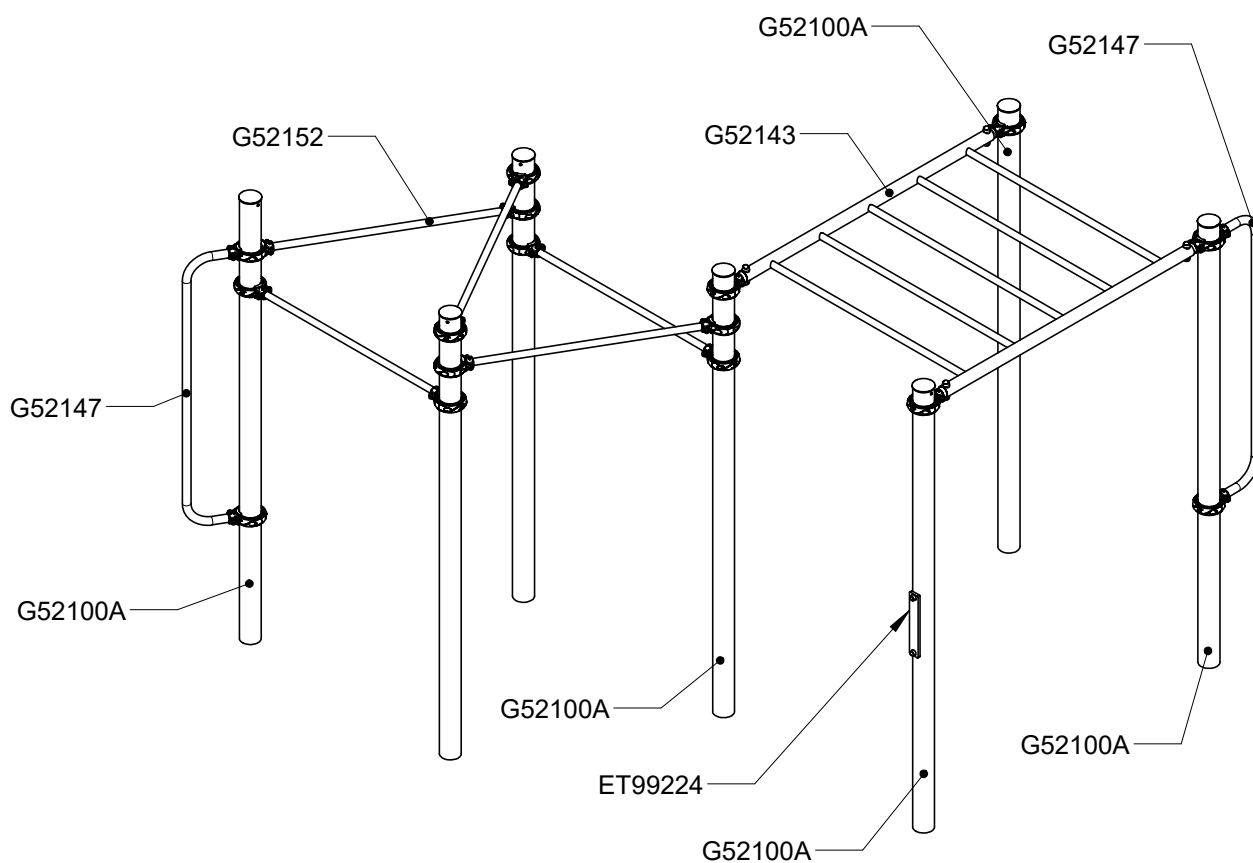
Implantation  
 Footing plan  
 Implantación  
 Fundamentplan  
 Funderingstekening

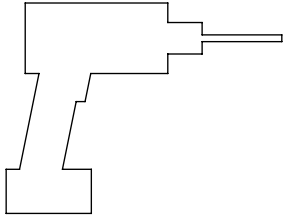


	x	y	z	w
□	0.3	0.3	0.3	0.6

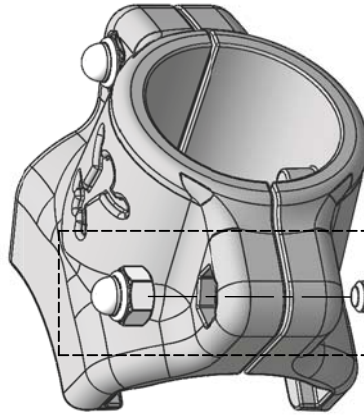
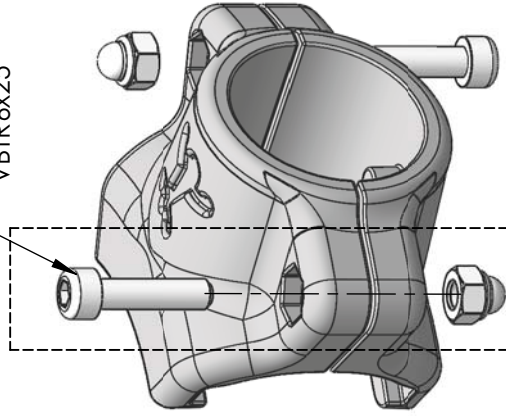


Réf	Quantité
ET99224-G1	1
G22215	10
G52100A	5
G52143	1
G52147	2
G52152A	1
M8310N	2
M8440N	2
VTH6x30A	2

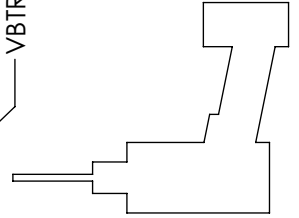




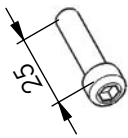
VBTR6x25



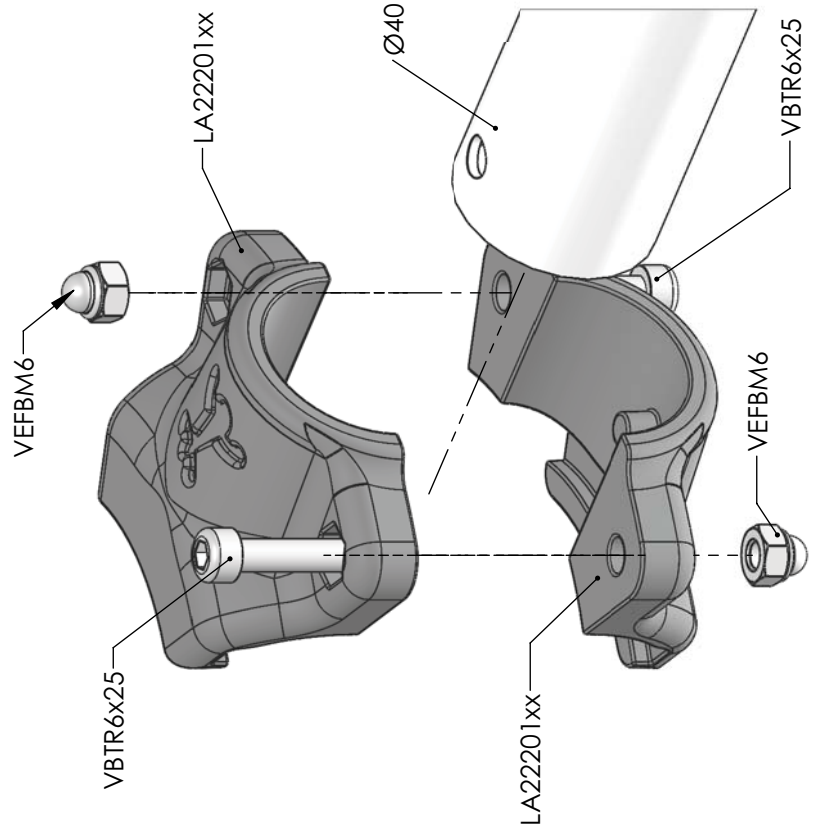
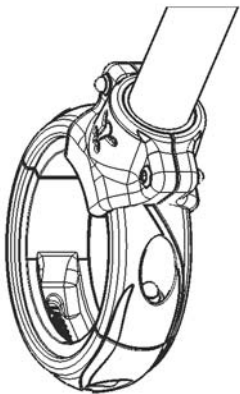
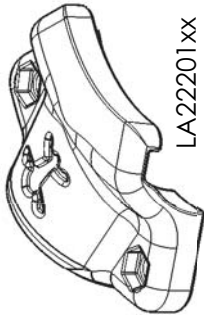
VBTR6x25



Réf	Qté
LA22201xx	2
VBTR6x25	2
VEFBM6	2

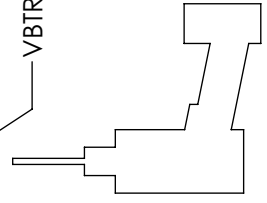
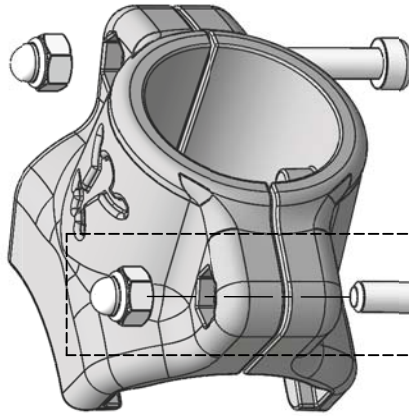
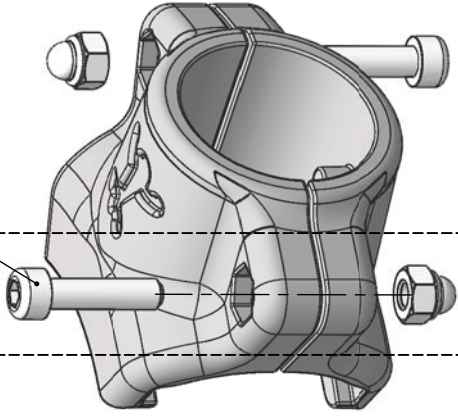


VBTR6x25





VBTR6x25



VBTR6x25

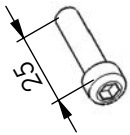
Réf	Qté
LA22201xx	2
LI52101	1
VBTR6x25	2
VEFBM6	2



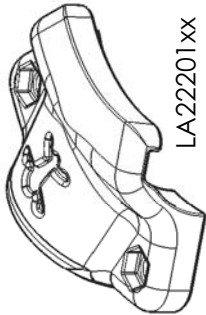
LI52101



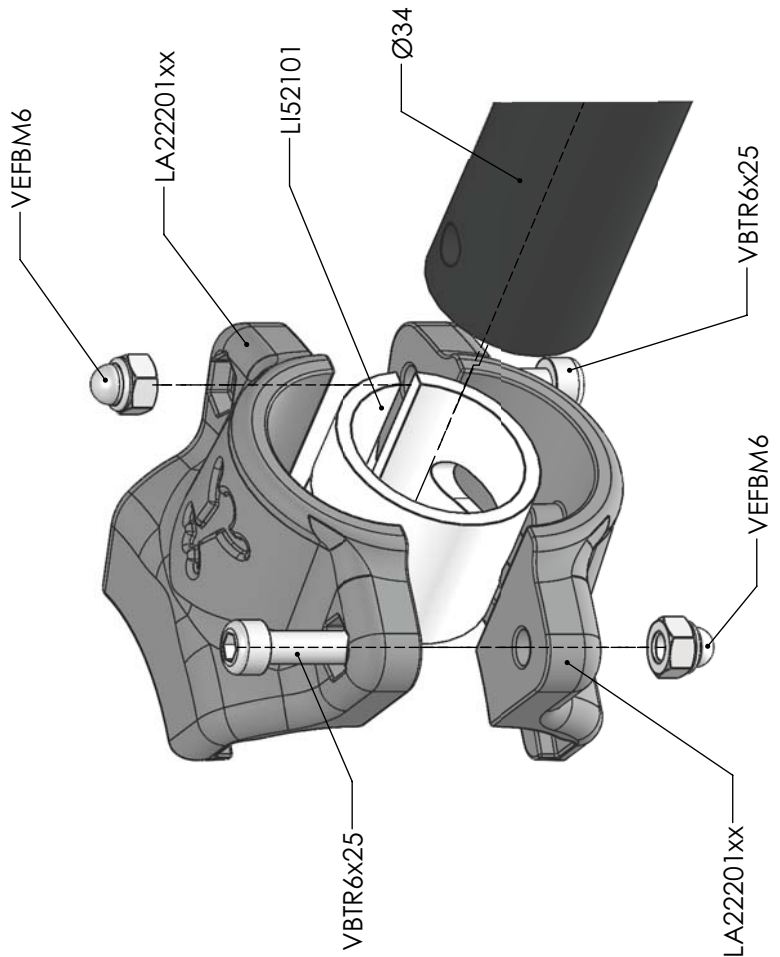
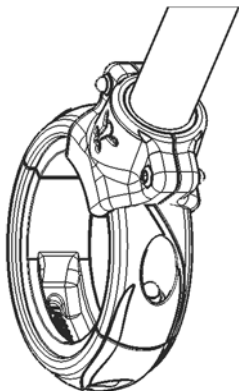
VEFBM6

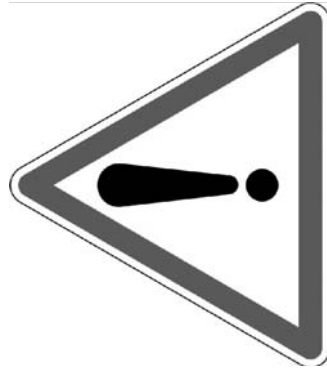
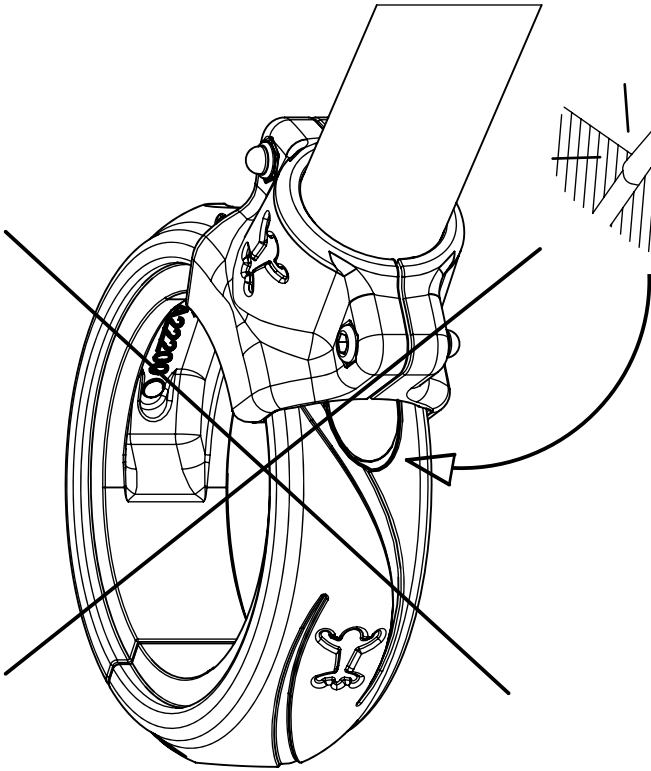


VBTR6x25

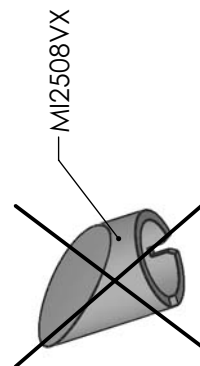
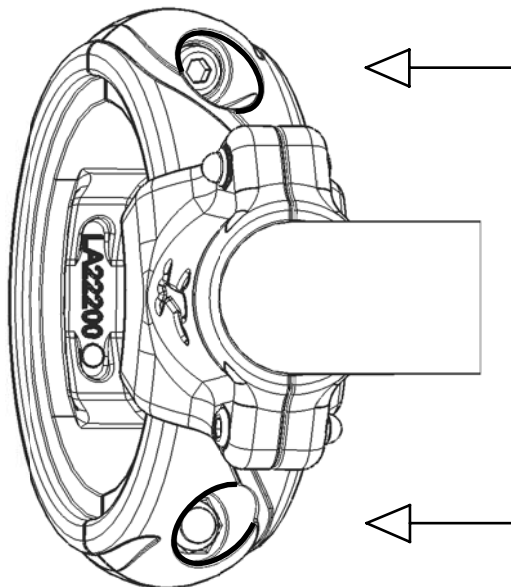
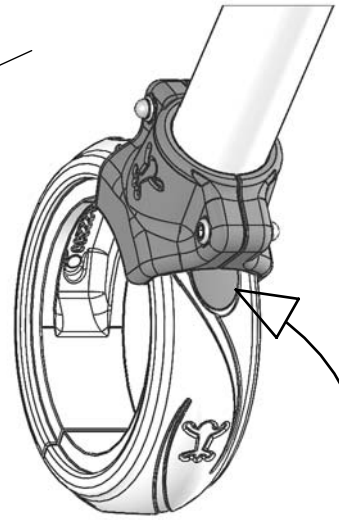
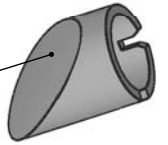


LA22201xx

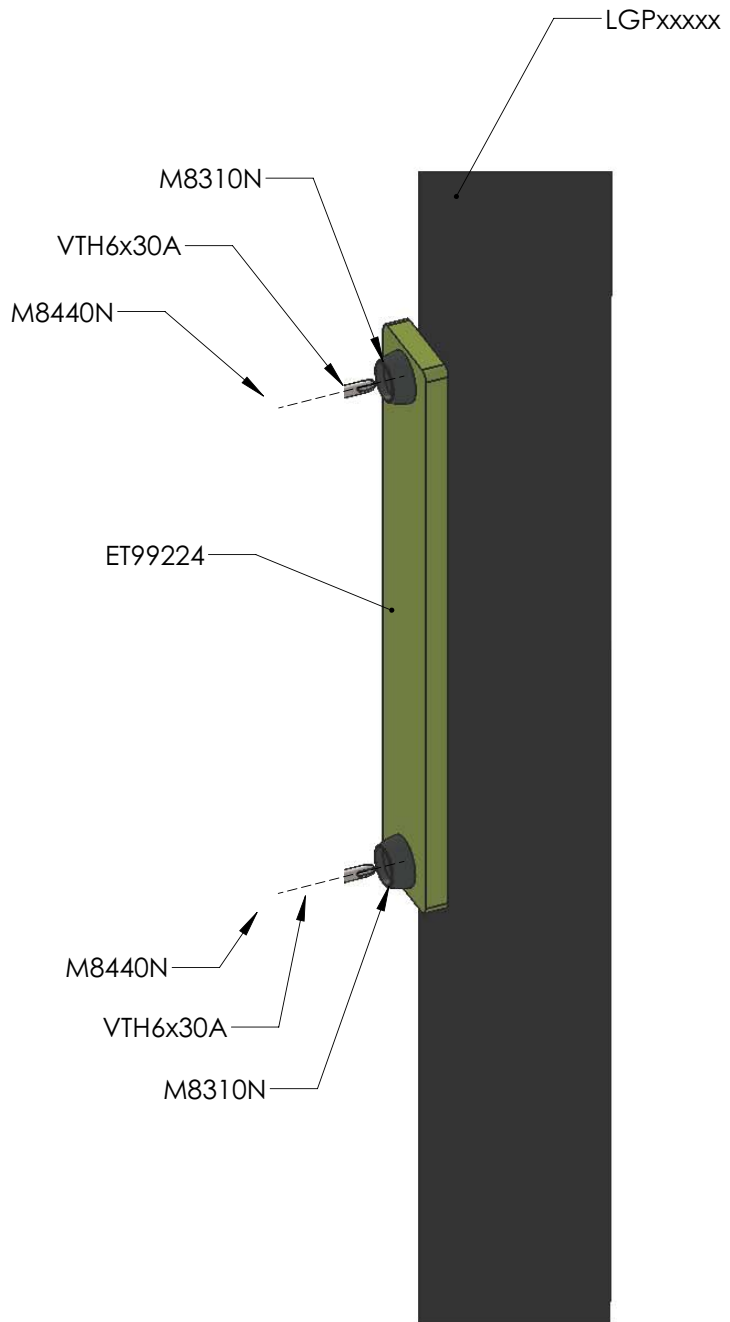
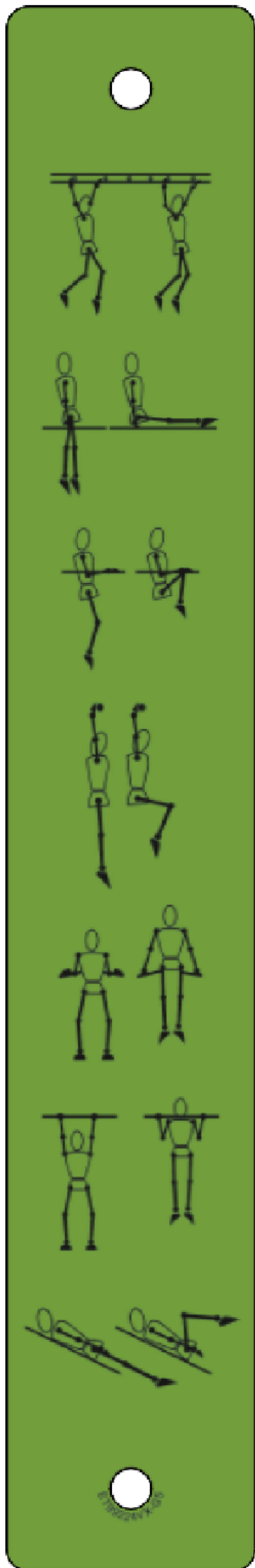


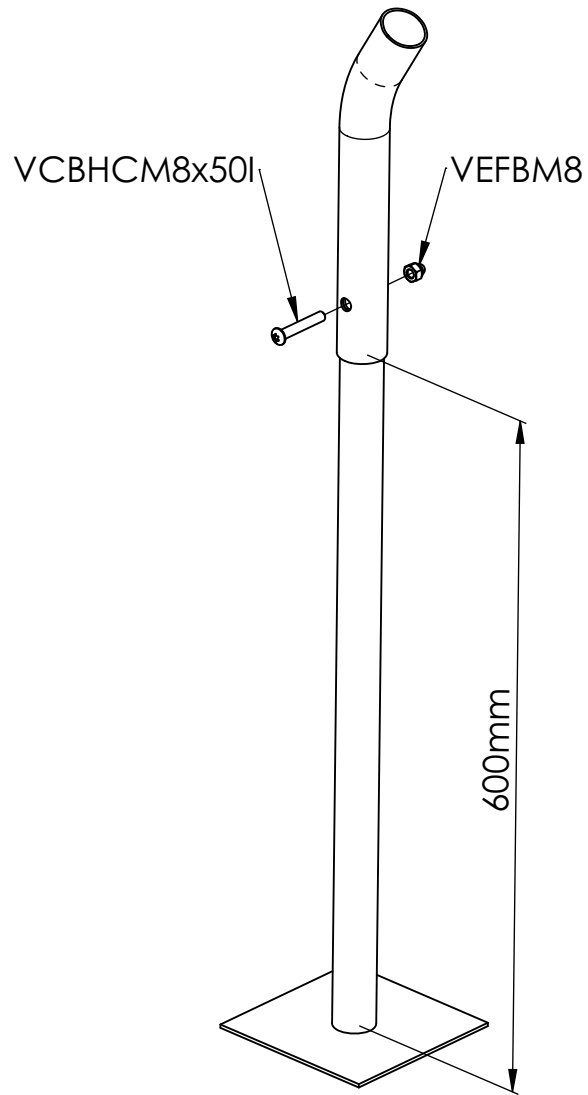


MI2508VX

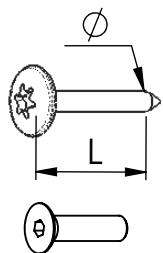


MI2508VX









VBT 6 x 30  
 $\varnothing$  L (mm)

VFHC



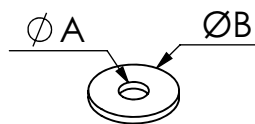
VEC M10  
 $\varnothing$




VEF




VEB



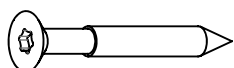
VR6x18  
 $\varnothing A$   $\varnothing B$



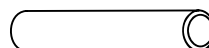
**1000 - 1800 tr/min**  
 Vitesse de rotation  
 Rotation speed



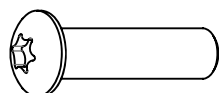
**14 N.m**  
 Couple de rupture  
 Torque of break



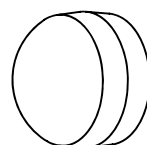
VWT



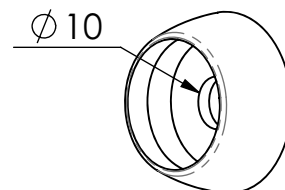
VGC



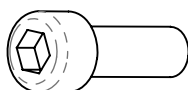
VCBHC



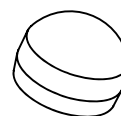
M10 440N



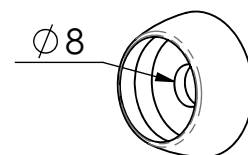
M10 310 N



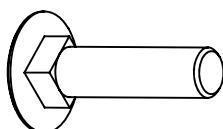
VBTR



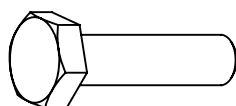
M8440N



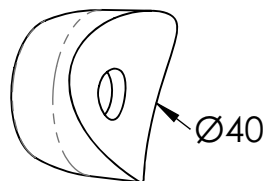
M8310N



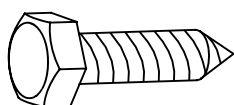
VTRCC



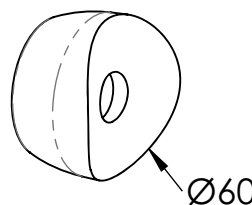
VTH



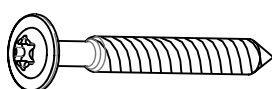
MI2503



VTF

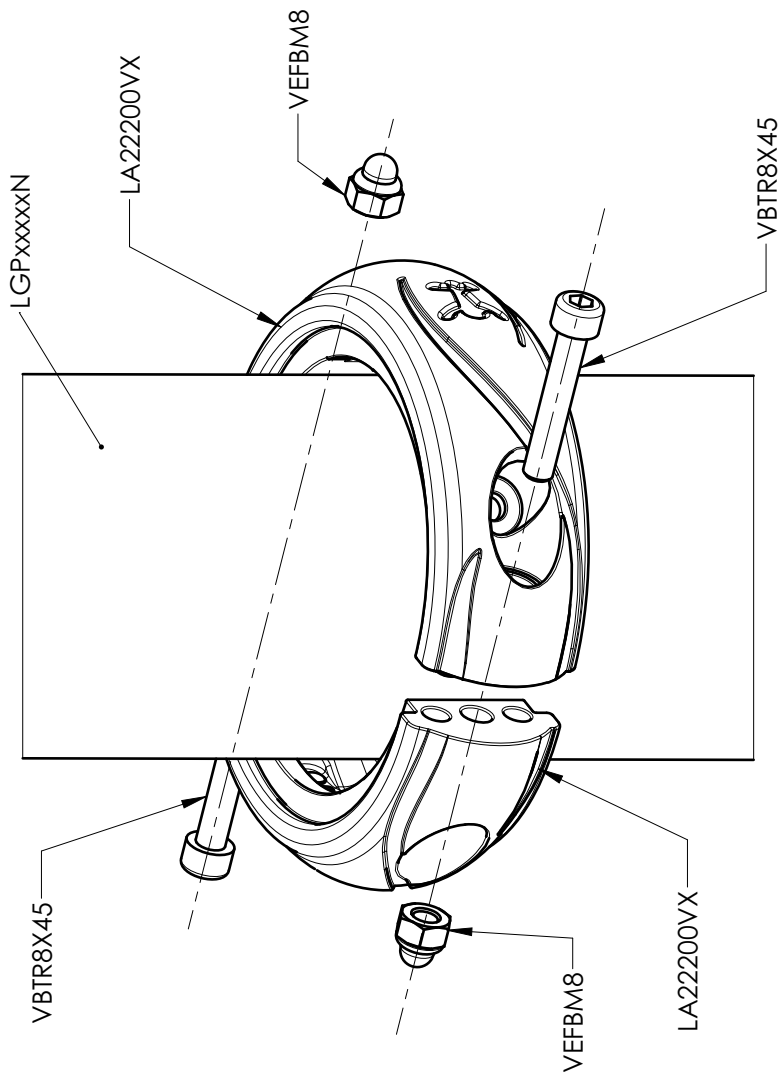


MI2701



VBT

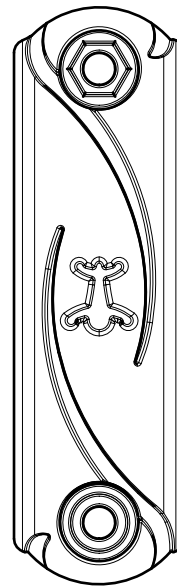
Réf	Qté
LA22200VX	2
VBTR8X45	2
VEFBM8	2



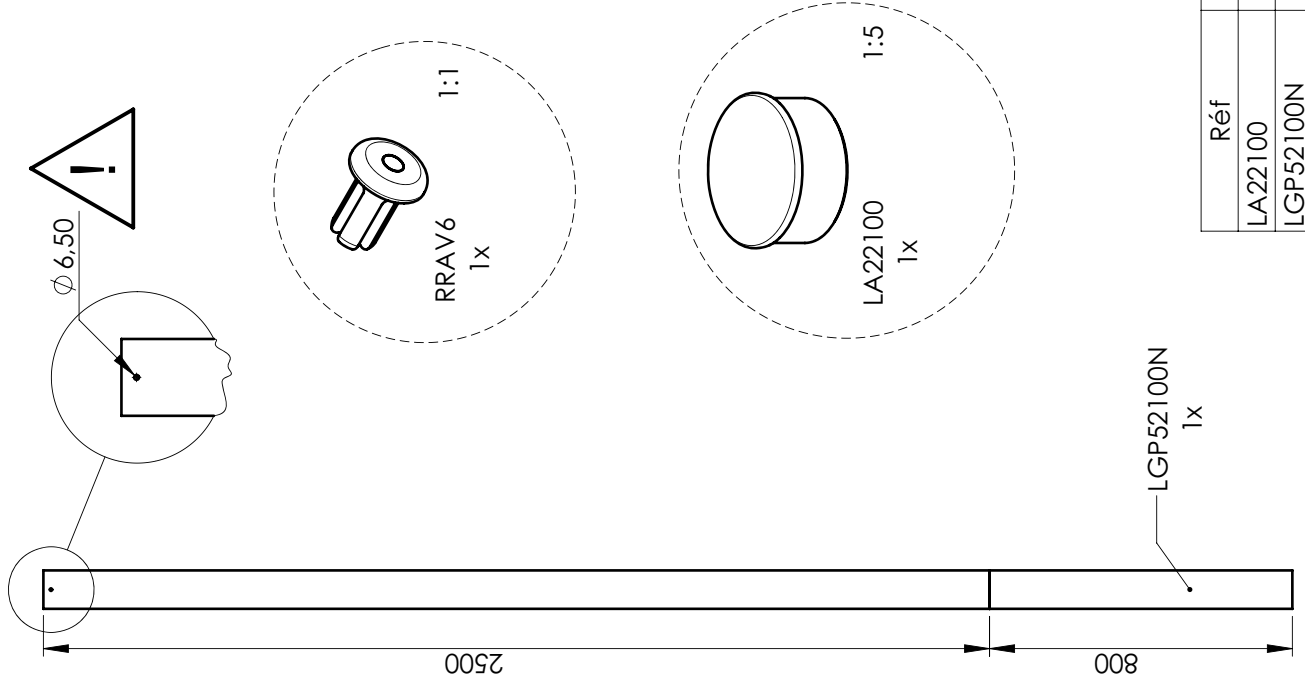
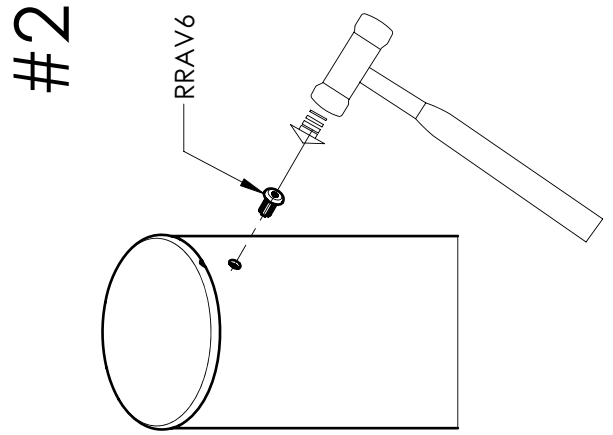
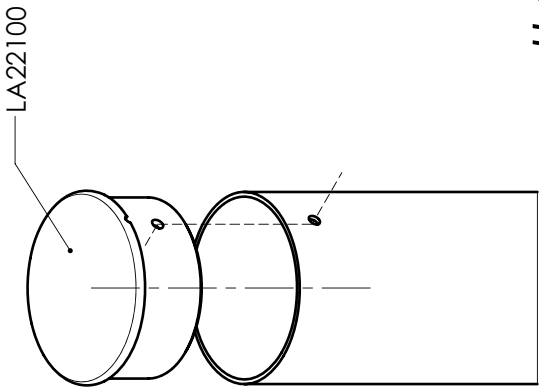
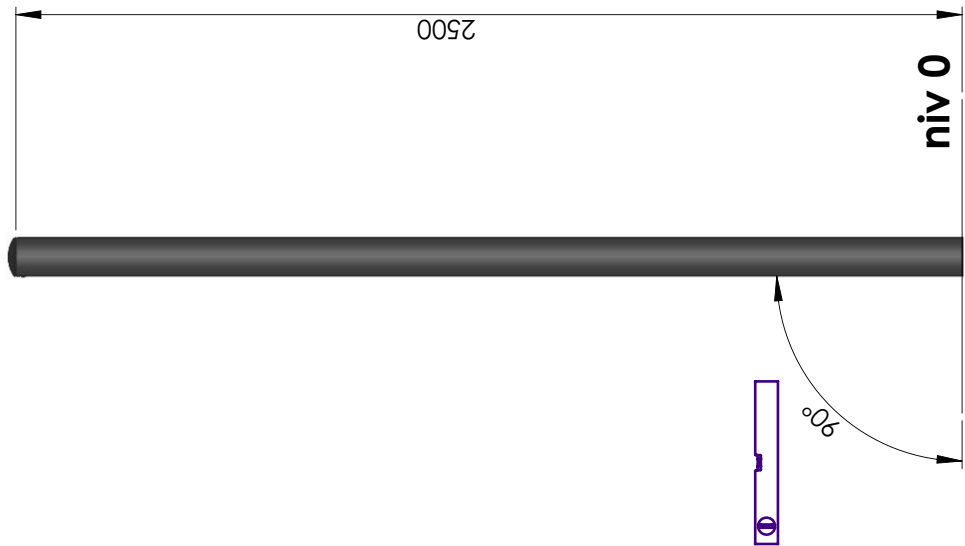
VBTR8X45



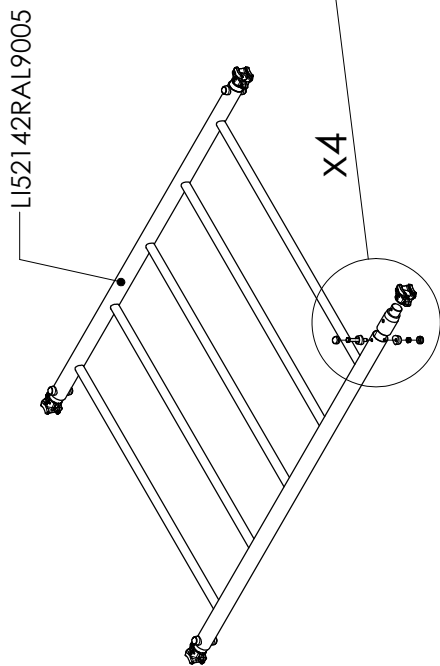
VEFBM8



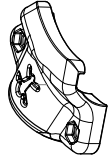
LA22200VX



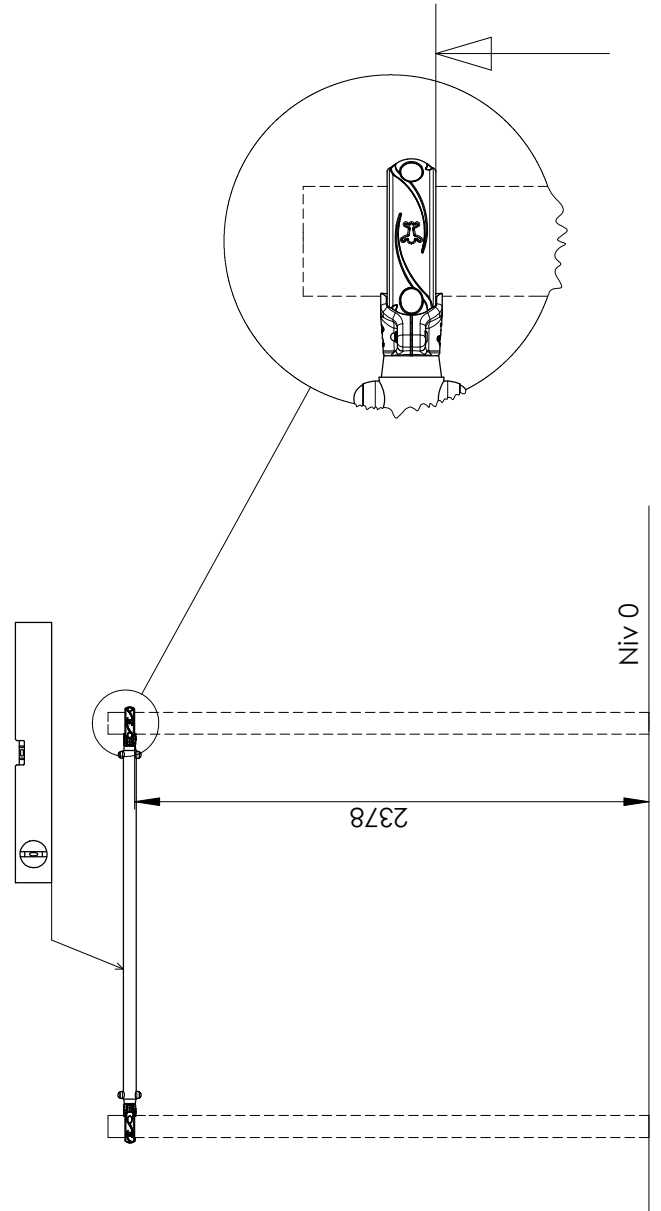
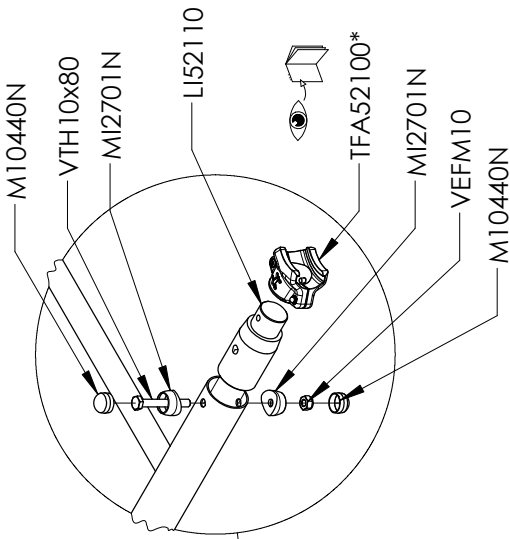
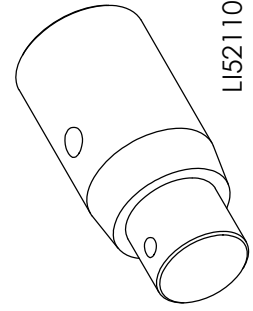
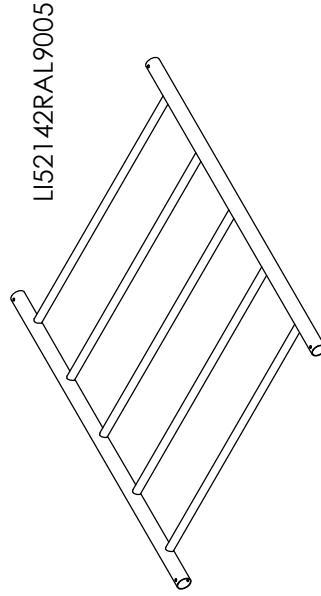
Réf	Qté
LA22100	1
LGP52100N	1
RRAV6	1



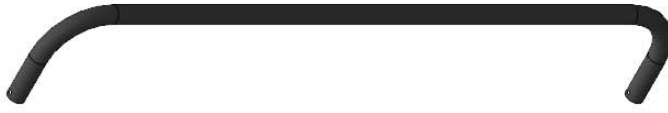
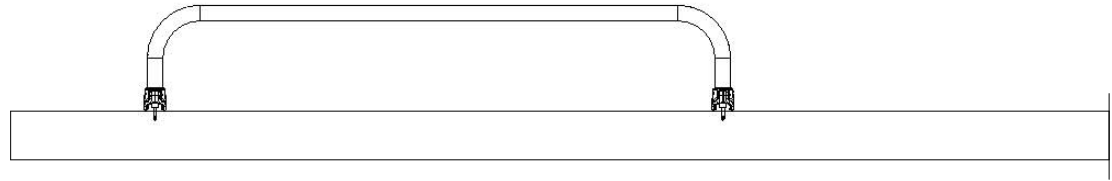
LA22201VX



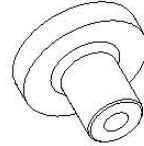
Réf	Qté
LA22201VX	8
LI52110	4
LI52142RAL9005	1
M10440N	8
M12701N	8
VBTR6x25	8
VEFBM6	8
VEFM10	4
VTH10x80	4



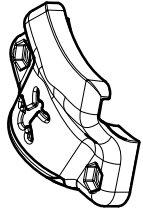
Réf	Qté
LA22201VX	4
LI52106RAL9005	1
LI52126	2
VTH6x60 AUTO	2
VBTR6x25	4
VEFBM6	4



LI52106RAL9005

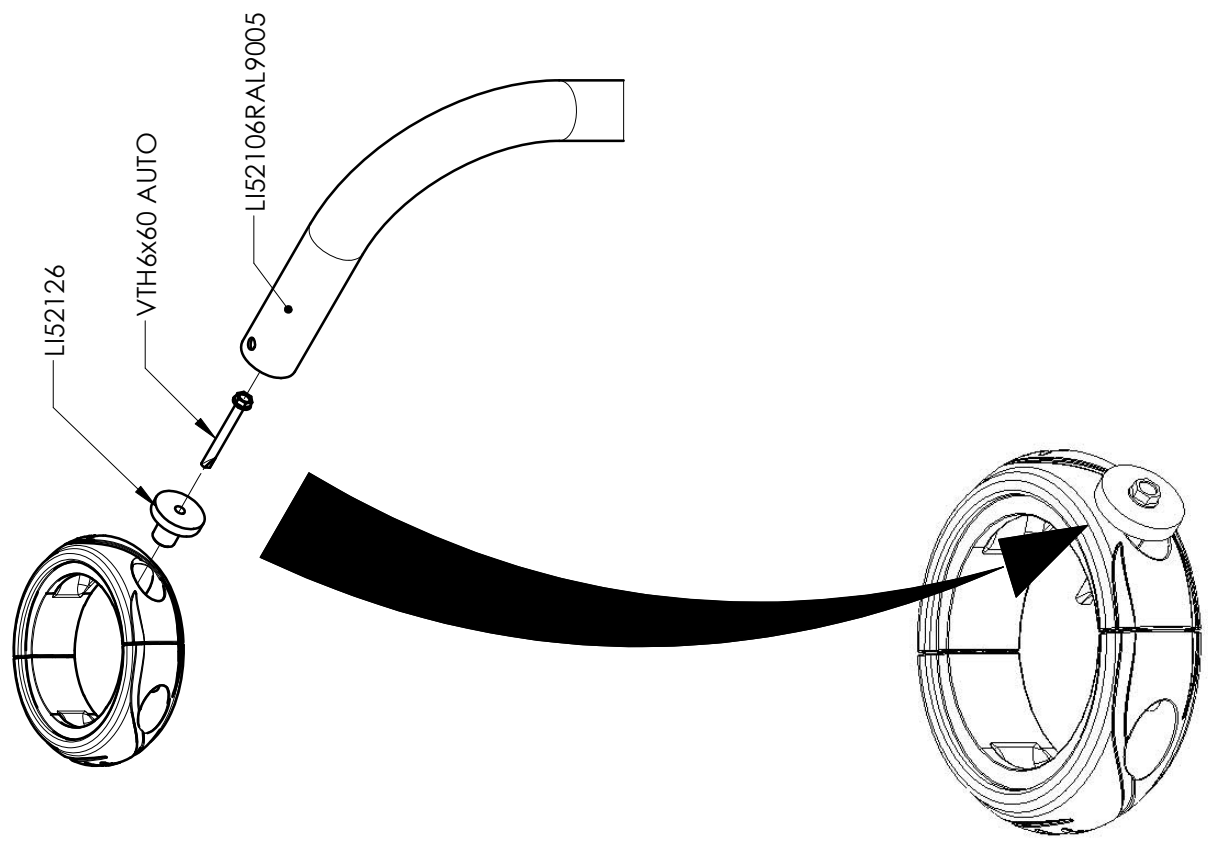


LI52126

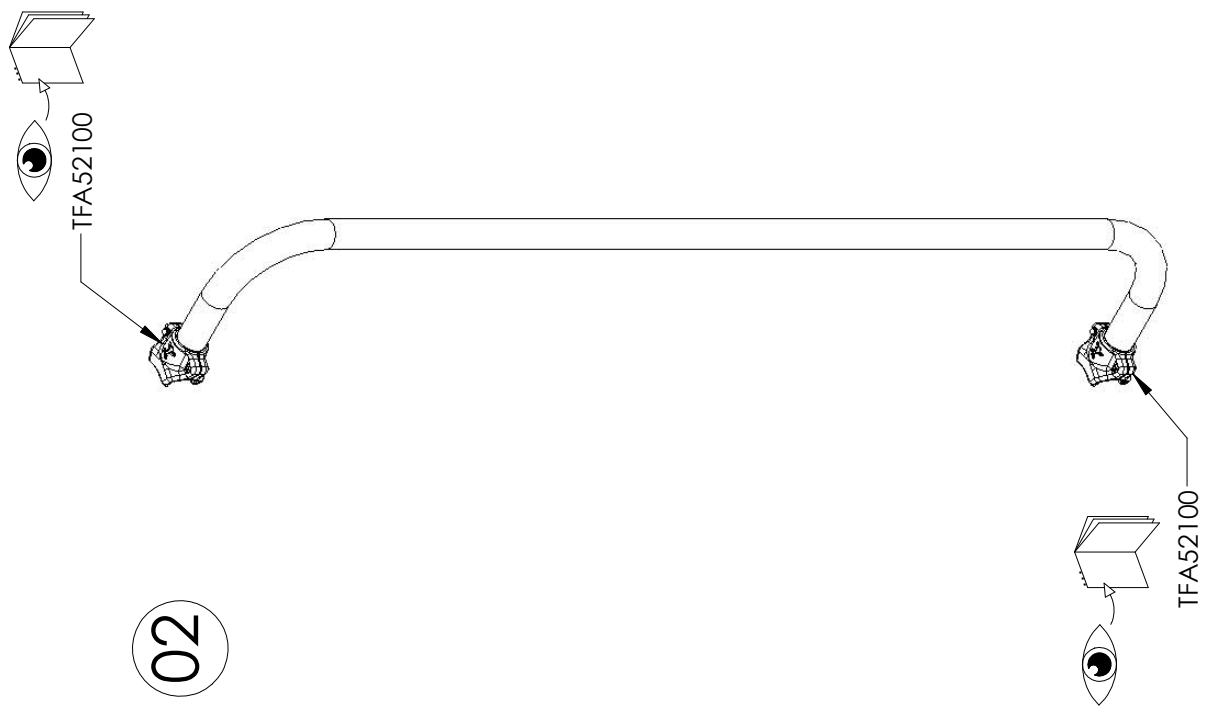


LA22201VX

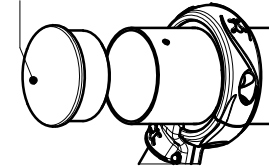
01



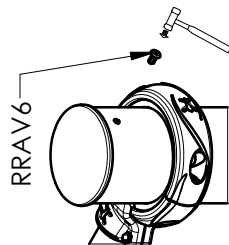
02



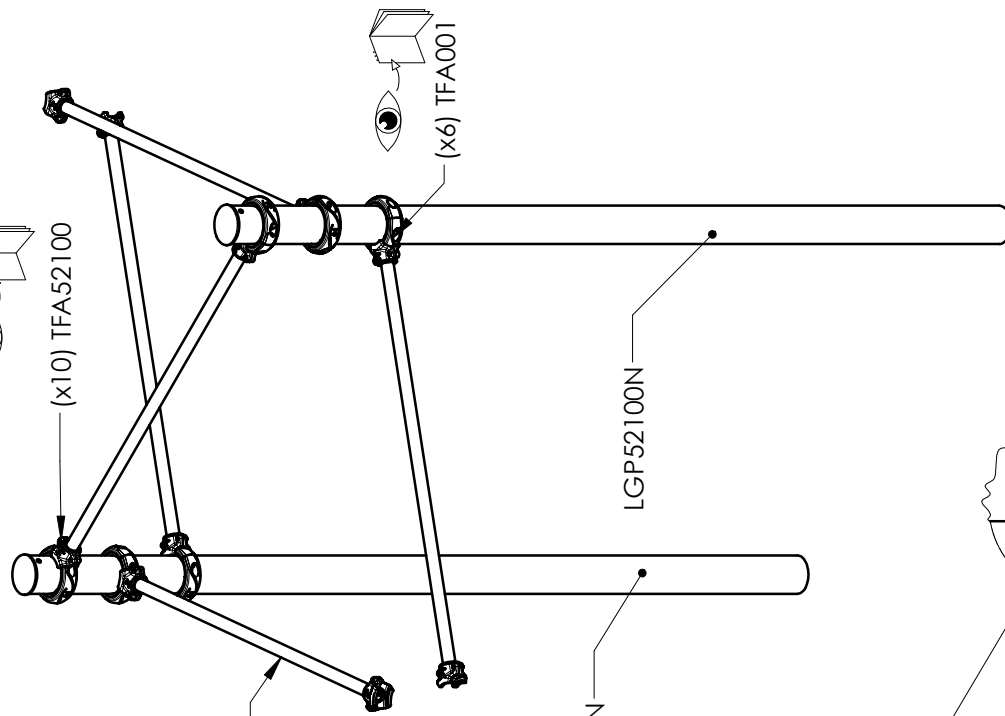
LA22100



RRAV6



LG52133RAL9005  
5x

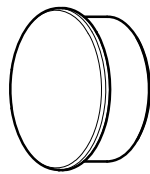


LGP52100N

LGP52100N

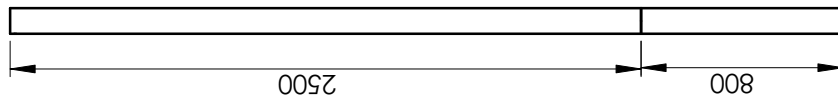
Niv 0

2378  
2178  
1978



LA22100

LA22201VX



LGP52100N

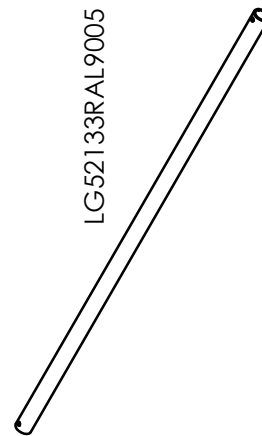
L52101



LA22200VX



LG52133RAL9005



Réf	Qté
LA22100	2
LA22200VX	12
LA22201VX	20
LGP52100N	2
L52101	10
LG52133RAL9005	5
RRAV6	2
VBTR8X45	12
VEFBM8	12
VBTR6x25	20
VEFBM6	20