

Diamond

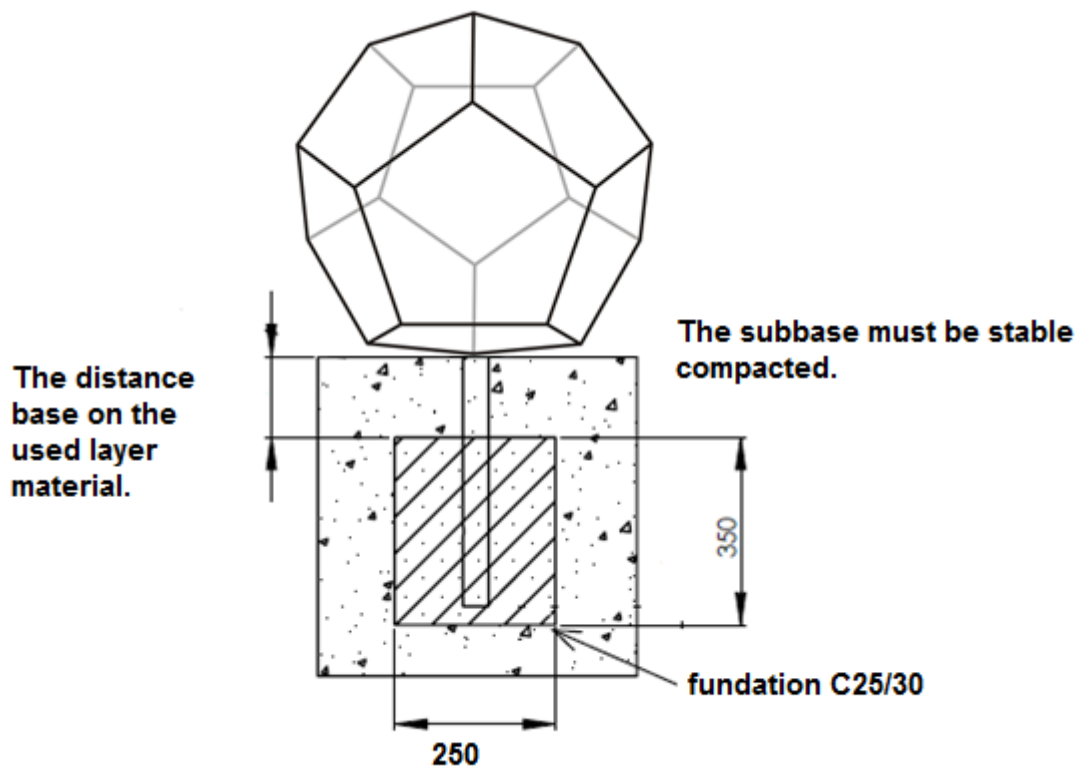
Substructure

The subbase must be even and stable against frost.

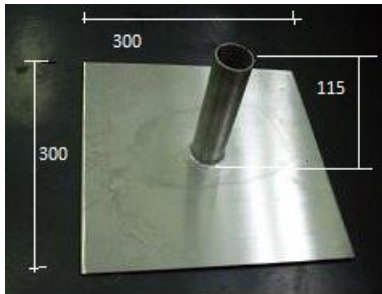
Installation

Install Diamond and half Diamond by optional steel mounting anchor into a prepared fresh concrete bed located over a stable-bearing substructure.

EUROFLEX® half Diamond can be installed directly in a fresh concrete bed or glued on a rubber surface like EUROFLEX® slabs. Glue the steel anchor into the ball with Polyurethane glue Ottocoll M 500 (red) or Ottocioll P83 (grey).



Steel plate:



Diameter metal pipe 40mm

The half Diamond could install directly in a fresh concrete bed or glued on the Euroflex slabs.

To avoid colour variations due to differences in sunlight expose, leave the UV protection film on the products as supplied until just prior to installation.