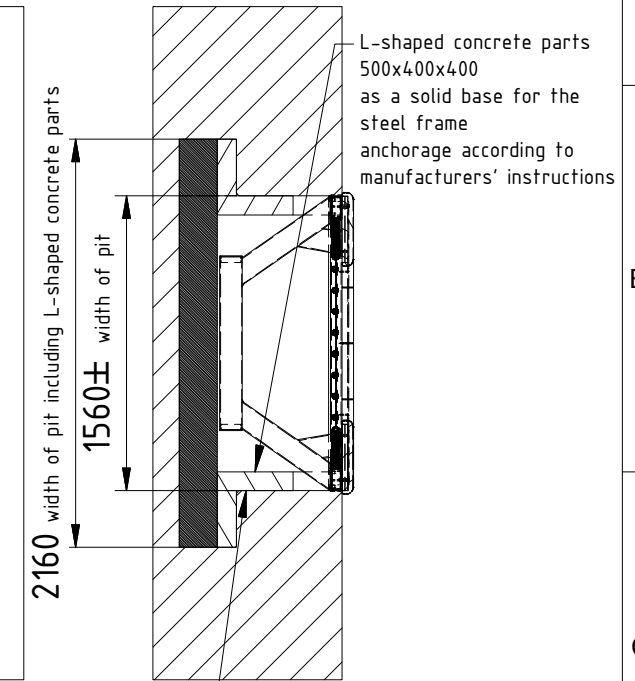
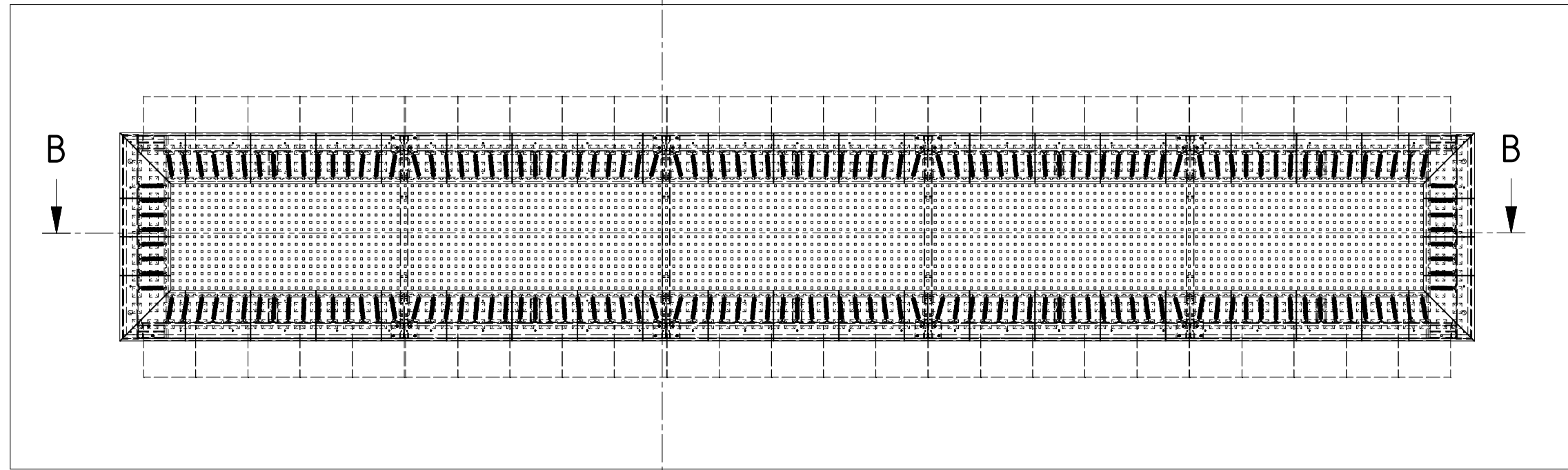


installation concept

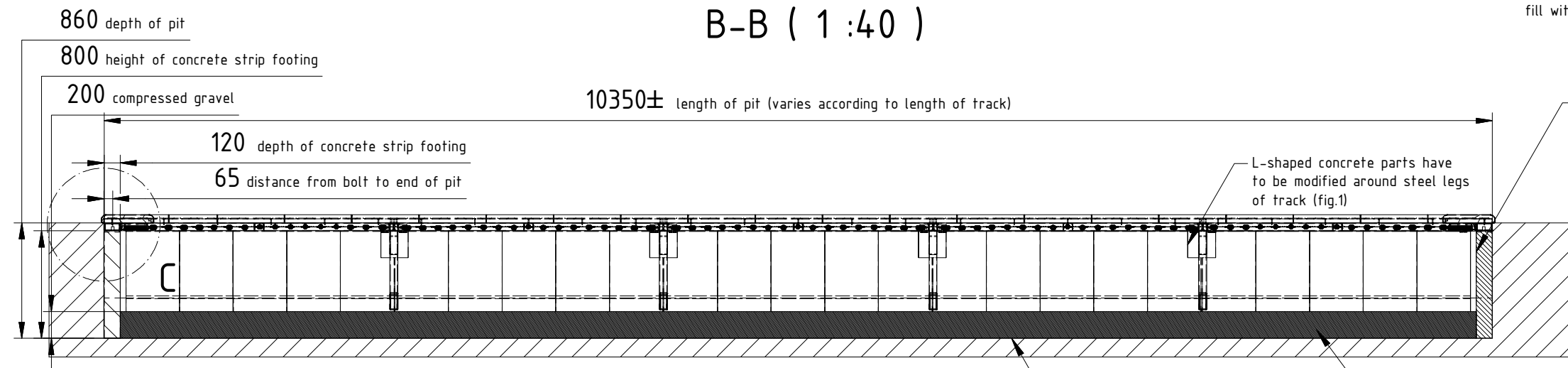
array of safety slabs may vary!

A-A ( 1 : 40 )

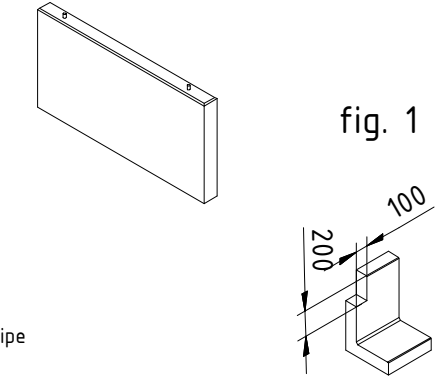


protect any cavities with proper fleece against vegetation and fill with gravel or sand

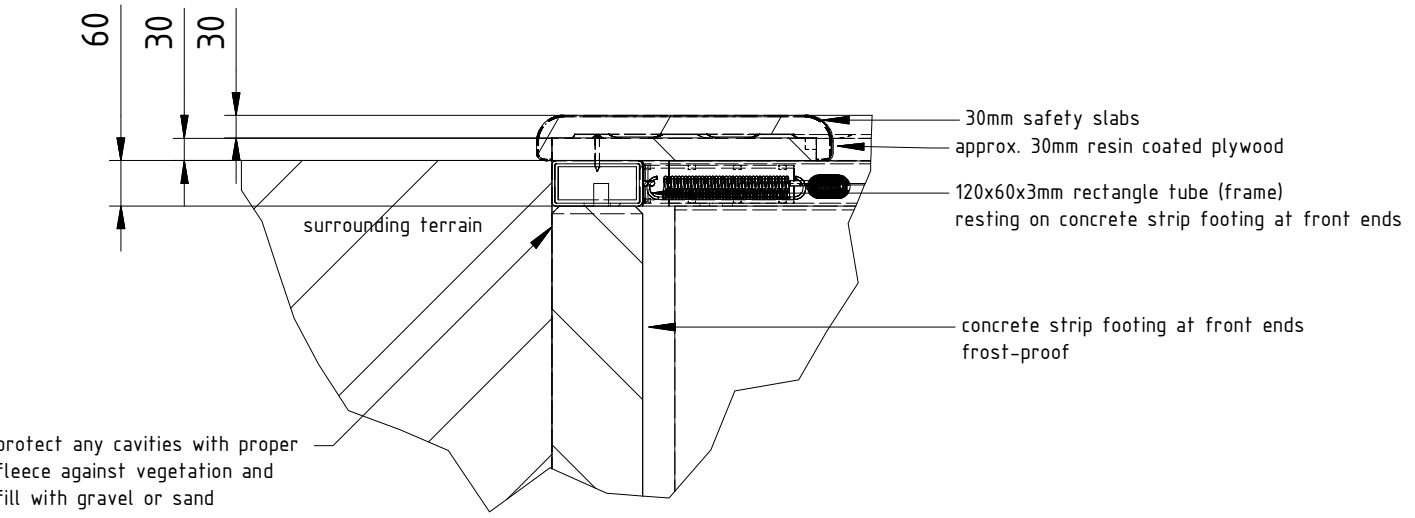
B-B ( 1 : 40 )



beveled concrete strip footing as solid base for front ends of steel frame including two bolts (sticking out 30mm) at a distance of 1160mm (e.g. Ø20 steel tube)




C ( 1 : 10 )



protect from all sides with proper fleece against vegetation

compressed gravel with drainage in case of solid ground with drainage pipe

	Datum	Name	Maßstab	Werkstoff					
Bearb.	22.02.2012	conrad		Rohteil/Halbzeug/Ausgangsteil					
Gepr.			1:40			Ä-Ind	Änd - Nr.:	Datum	
Benennung:				Model - NR.: 4.03 Bahn komplett 10m					
 Eurotramp-Trampoline Kurt Hack GmbH				Zeichnungs-Nr.: <b>4.04 Bahn 10m</b> <b>eng</b>				Blatt: 1/1	
Copyright by Eurotramp. All right reserved. Referred to protection notice ISO 16016									
Blattgröße: A3			Ähnlich:			Ers. für:			