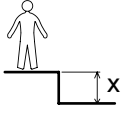
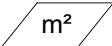




6→+



N°		
1	<0.6 m	16.5 m ²

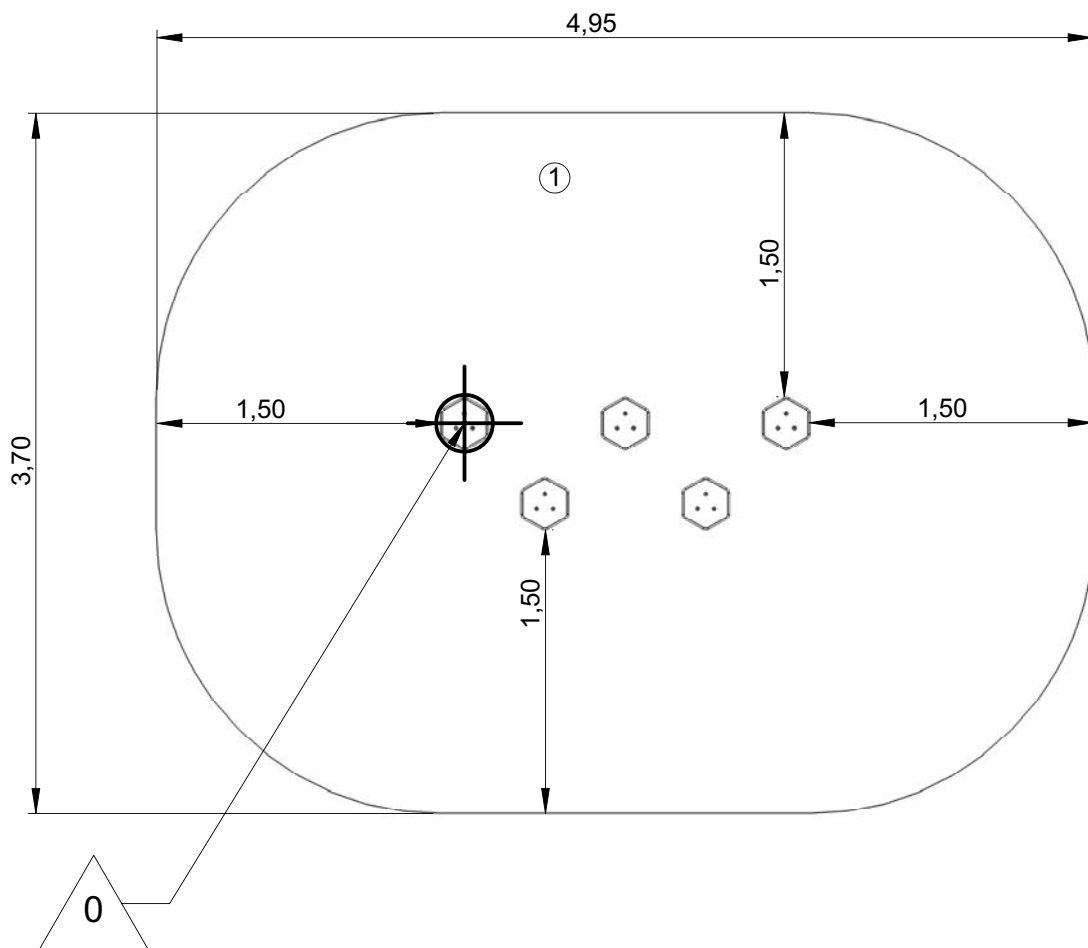
— Zone d'impact
Impact area
Area de impacto
Fallraum
Valzone



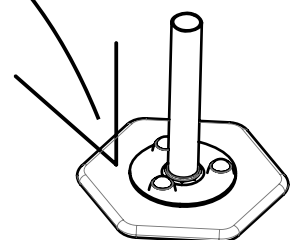
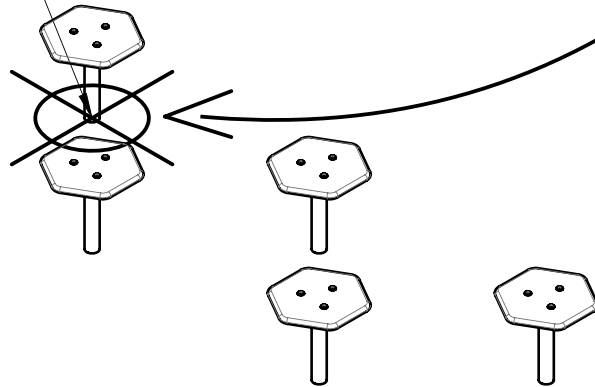
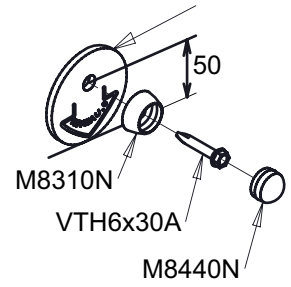
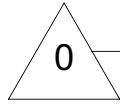
Point de référence
Setting out point
Punto de referencia
Bezugspunkt
Referentiepunt

- - - Espace libre
Free space
Espacio libre
Freiraum
Vrije ruimte

EN1176-1:2017

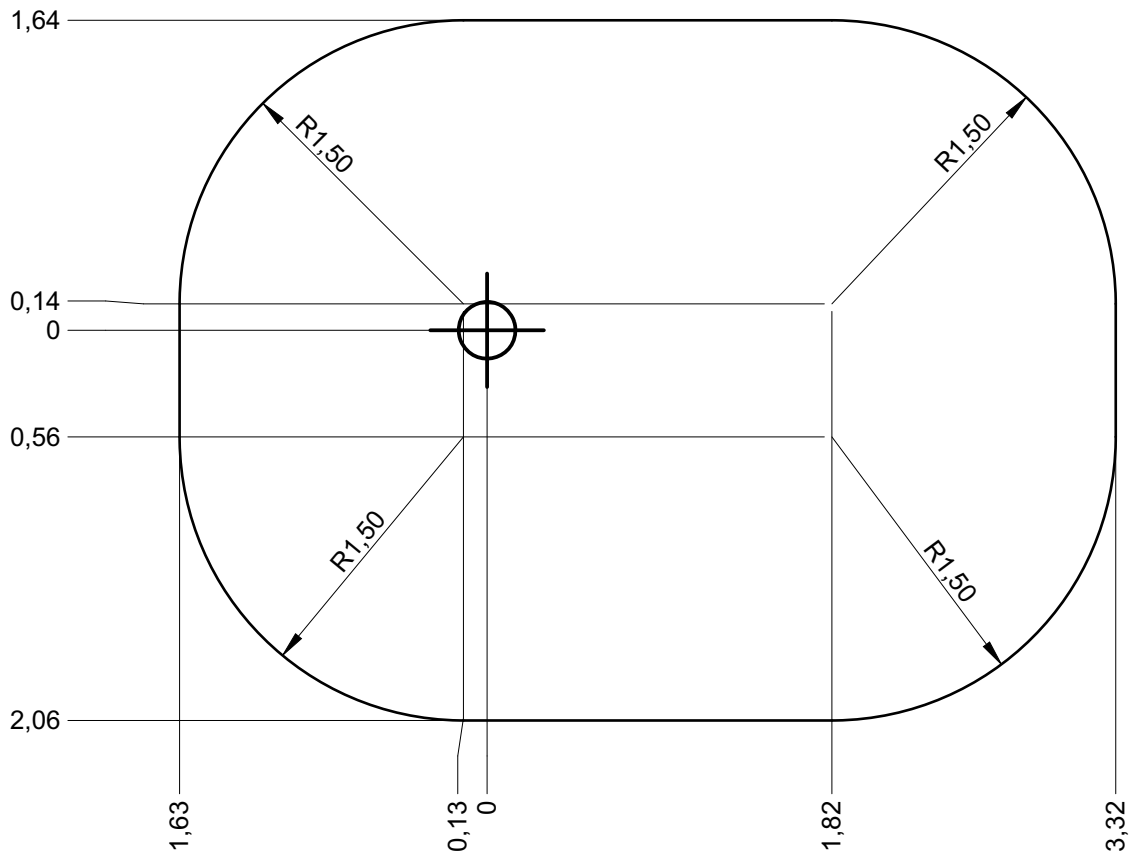


MI002



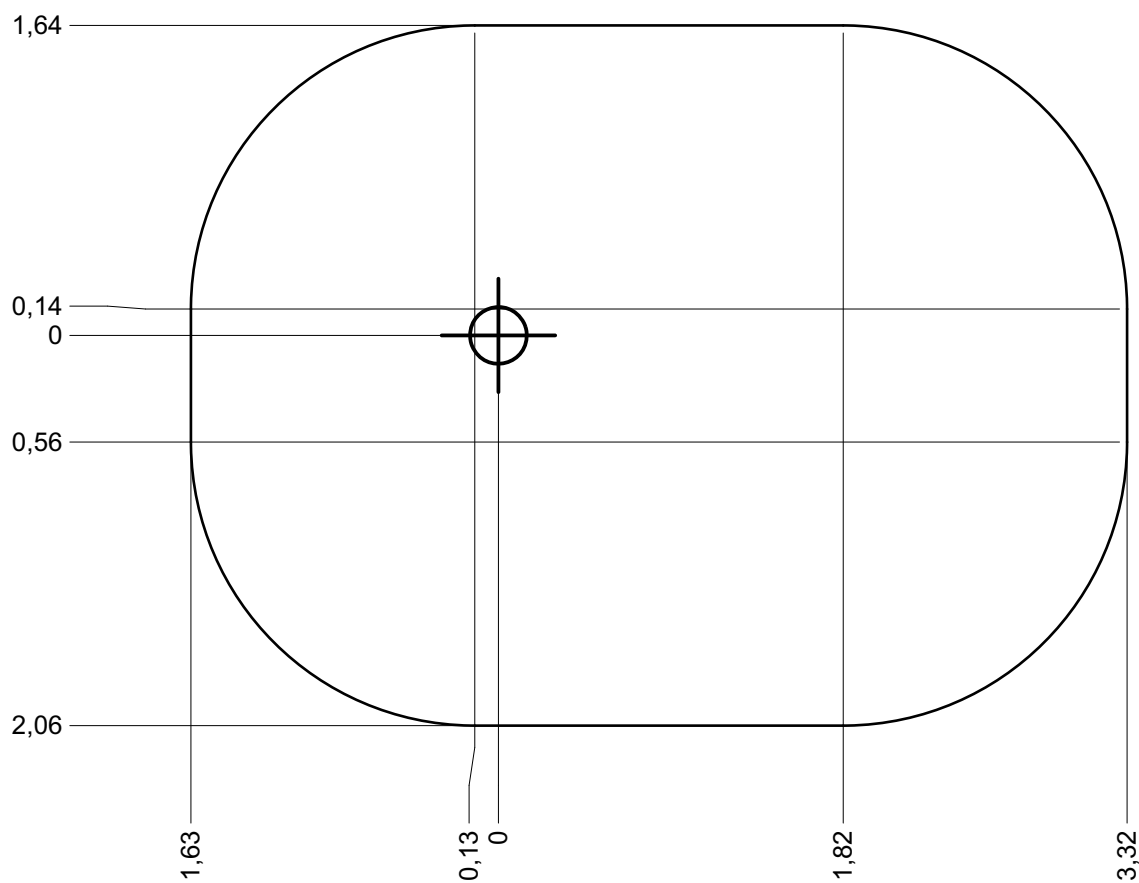
— Zone d'impact
 Impact area
 Area de impacto
 Fallraum
 Valzone

16.5 m²



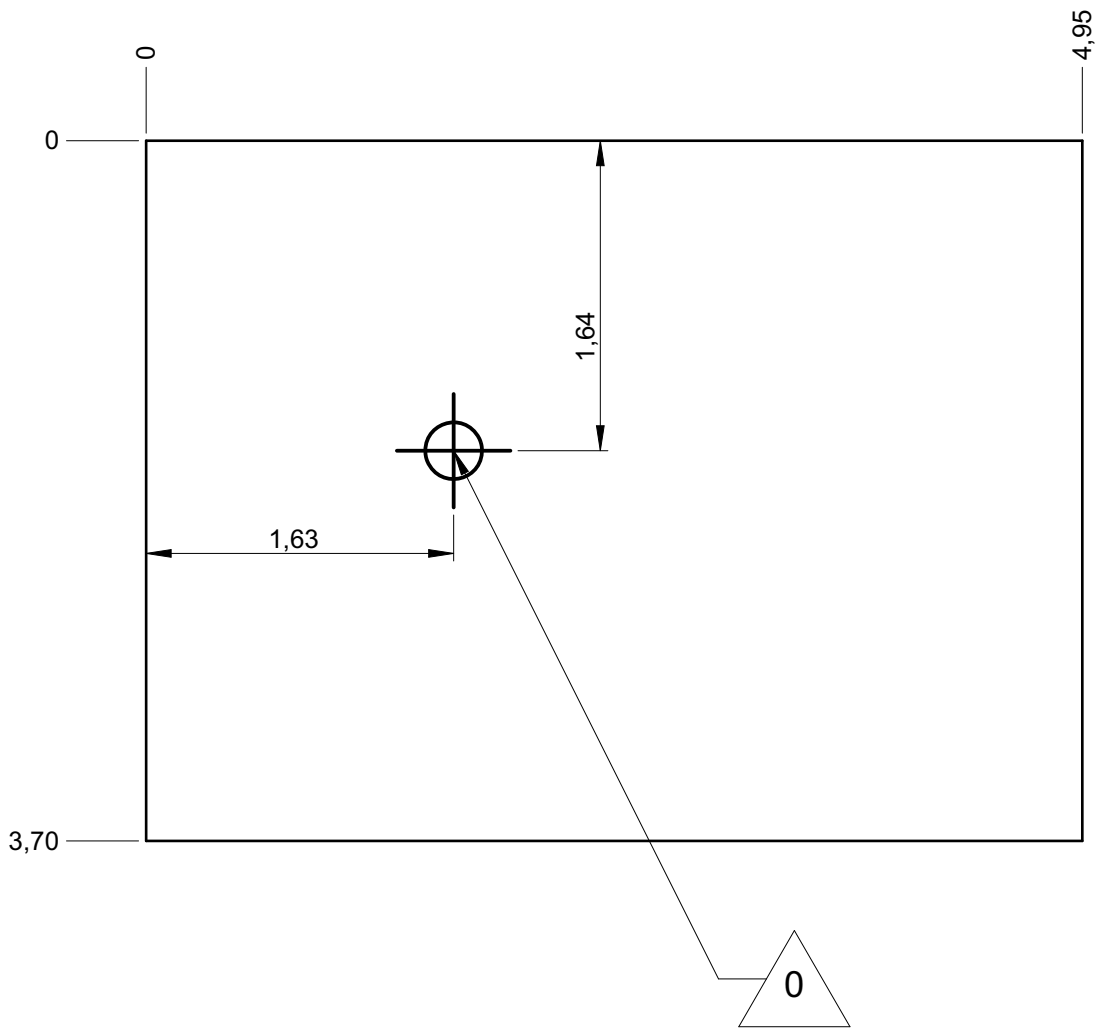
— Sol souple
Wetpour
Caucho continuo
Synthetischer Fallschutz
Gietvloer

16.5 m²

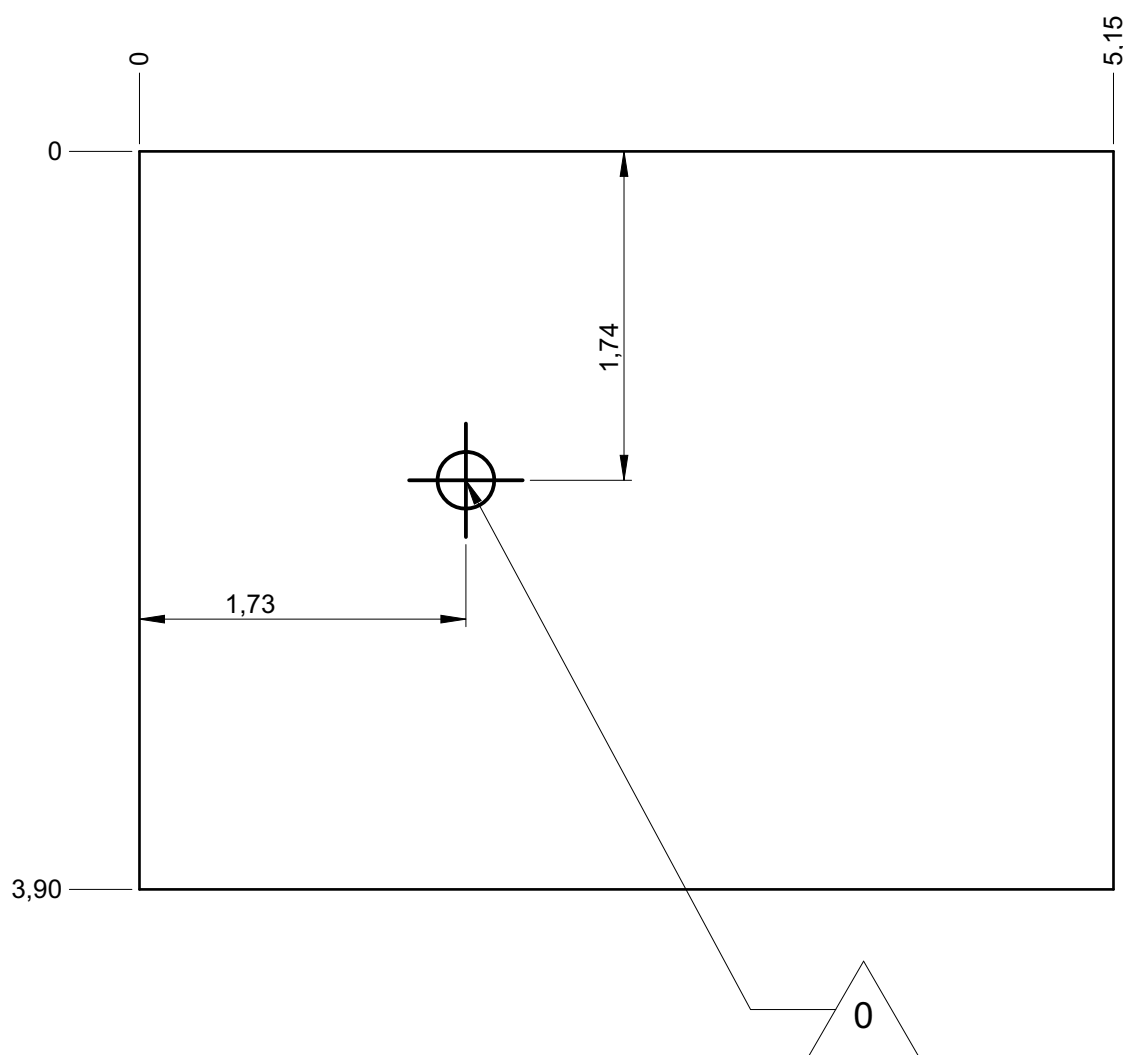


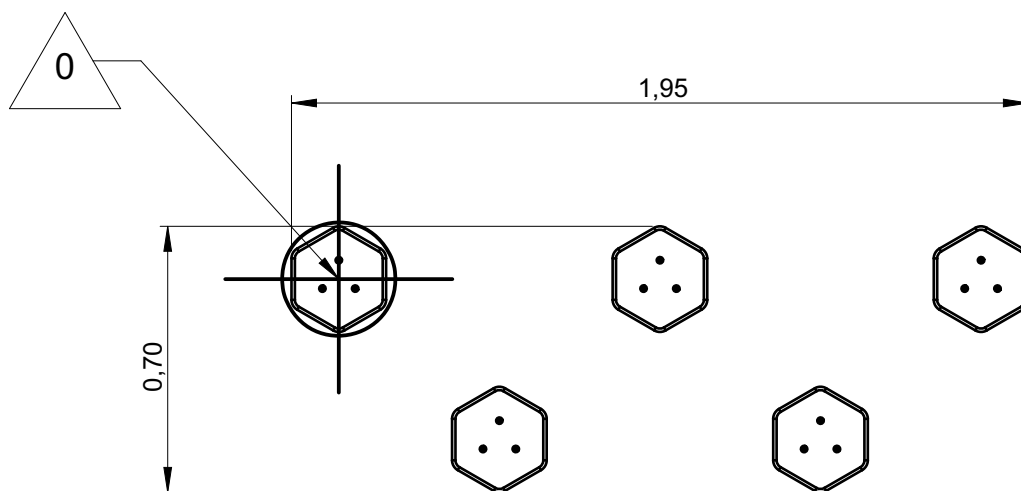
— Dalle béton
Concrete pad
Solera de hormigon
Beton Bodenplatte
Betonnen bodemplaat

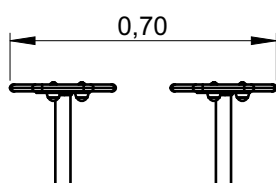
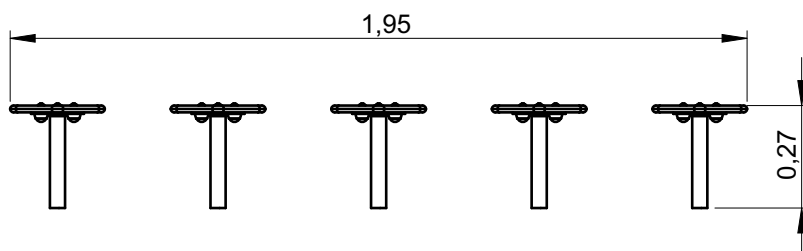
18 m
18.5 m²



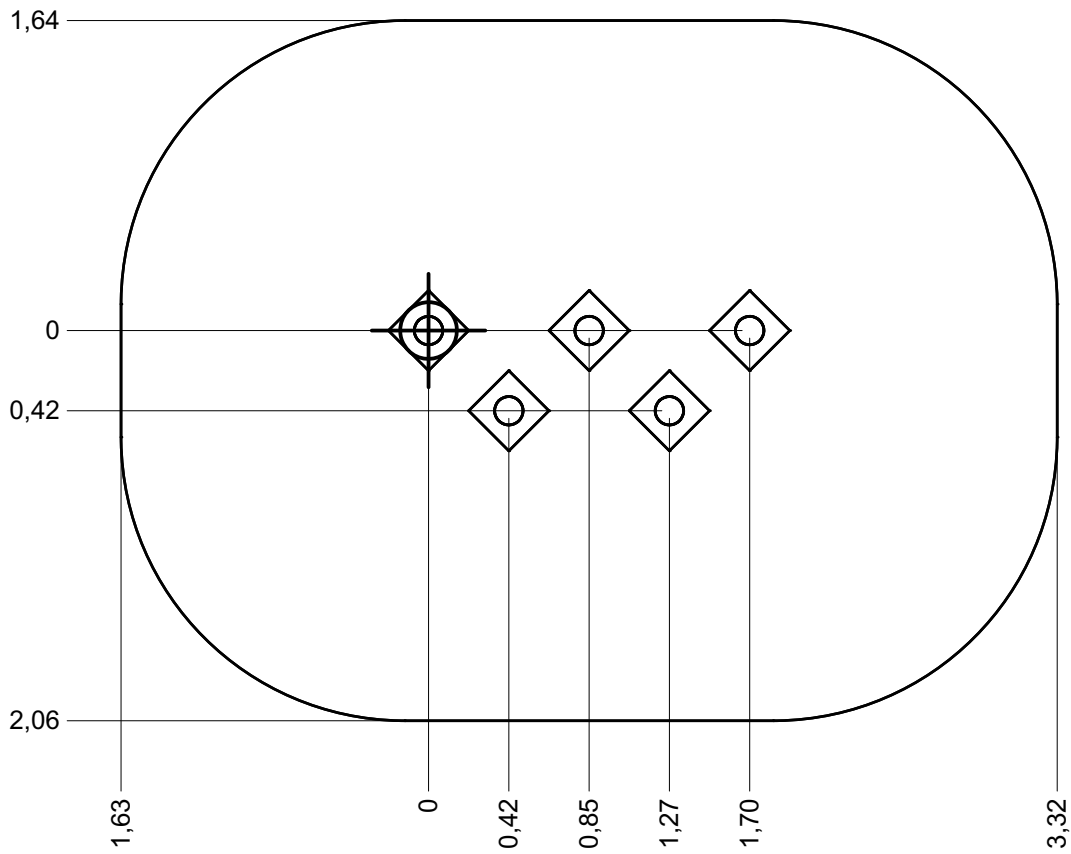
—	Sol fluent	
	Loos partucule material	19 m
	Arenero	
	Loses Bodenmaterial	20 m ²
	Los bodemmaterial	



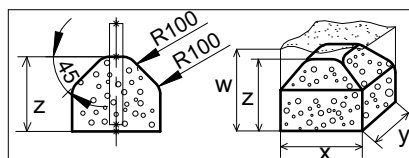




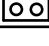


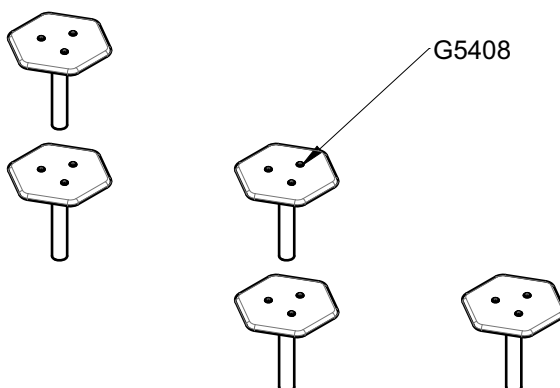
Implantation
 Footing plan
 Implantación
 Fundamentplan
 Funderingstekening



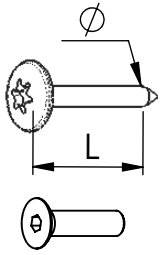
 x1
 2H
 0.14 m³



	x	y	z	w
	0.3	0.3	0.3	0.6
	0.4	0.4	0.3	0.6
	0.6	0.3	0.3	0.6

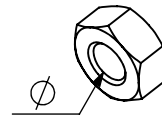


Réf	Qté
G5408	1

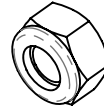


VBT 6 x 30
 \varnothing \uparrow L (mm)

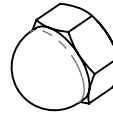
VFHC



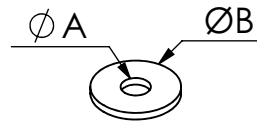
VEC M10
 \varnothing



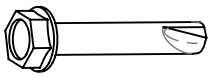
VEF



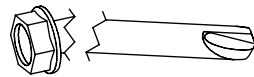
VEB



VR6x18
 $\varnothing A$ $\varnothing B$



VTHA

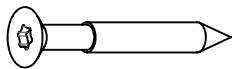


1000 - 1800 tr/min

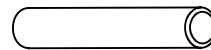
Vitesse de rotation
 Rotation speed

14 N.m

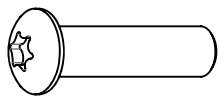
Couple de rupture
 Torque of break



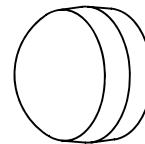
VWT



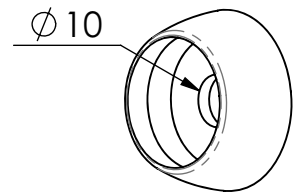
VGC



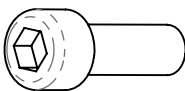
VCBHC



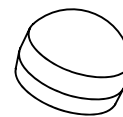
M10 440N



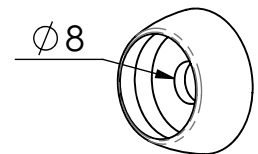
M10 310 N



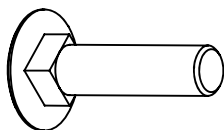
VBTR



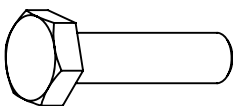
M8440N



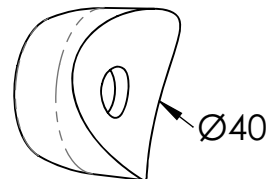
M8310N



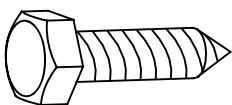
VTRCC



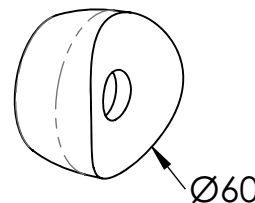
VTH



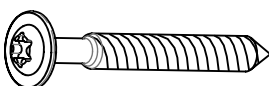
MI2503



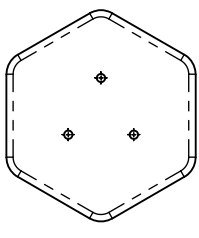
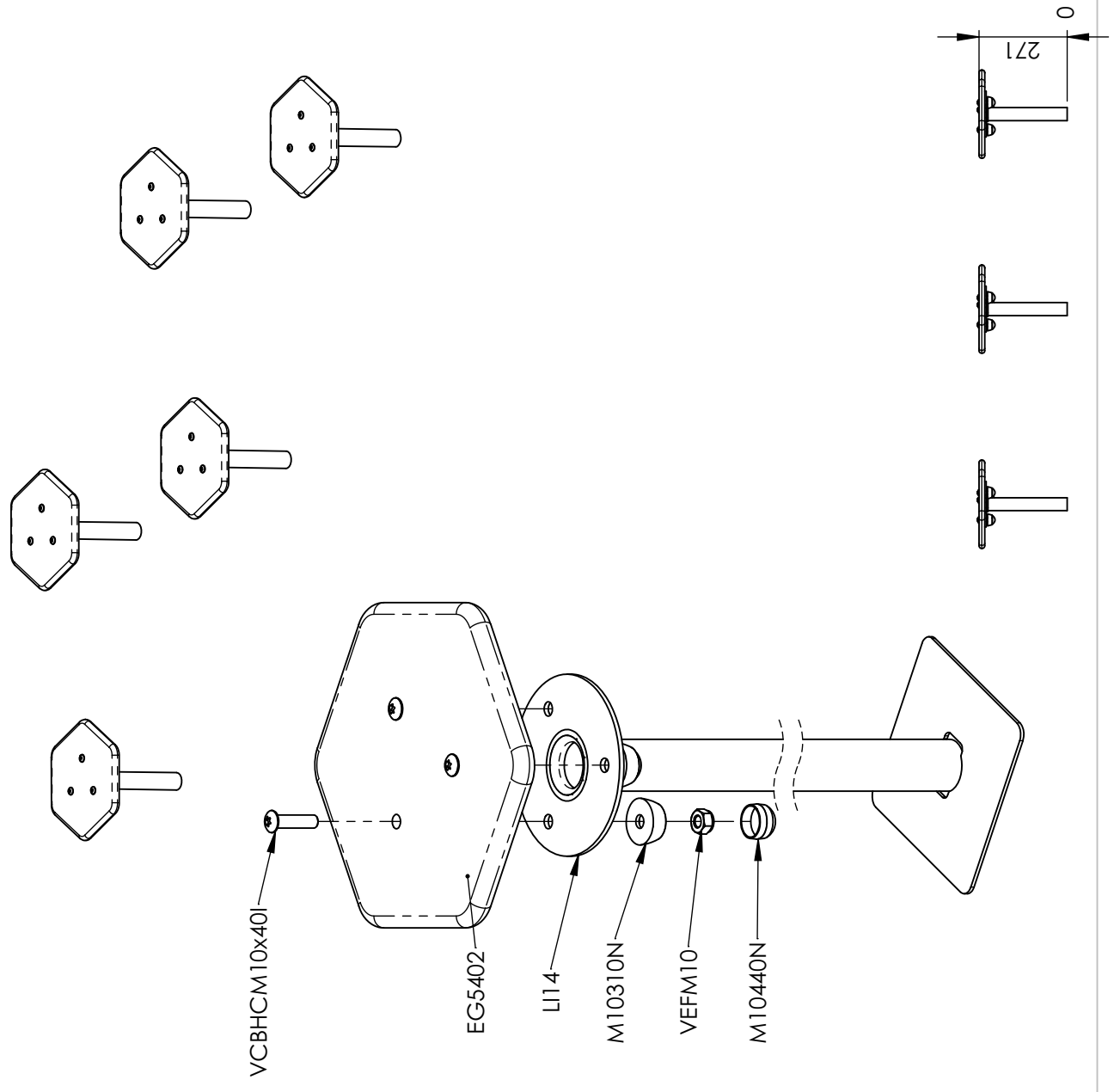
VTF



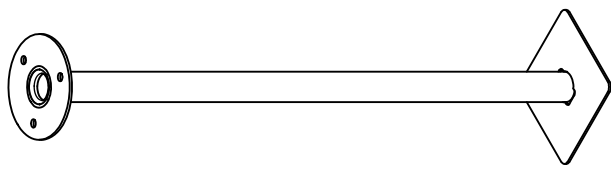
MI2701



VBT



EG5402



LI14

Réf	Qté
EG5402O	5
LI14	5
M10310N	15
M10440N	15
VCBHC10x40I	15
VEFM10	15