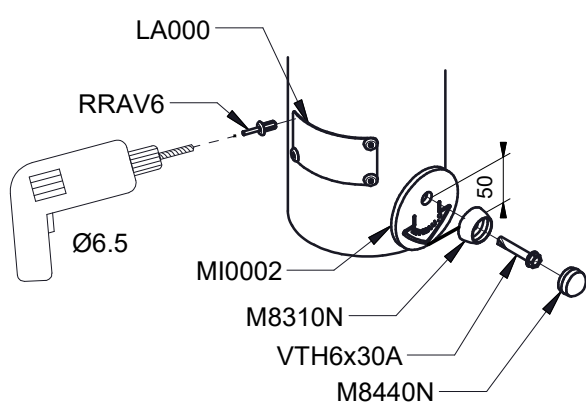
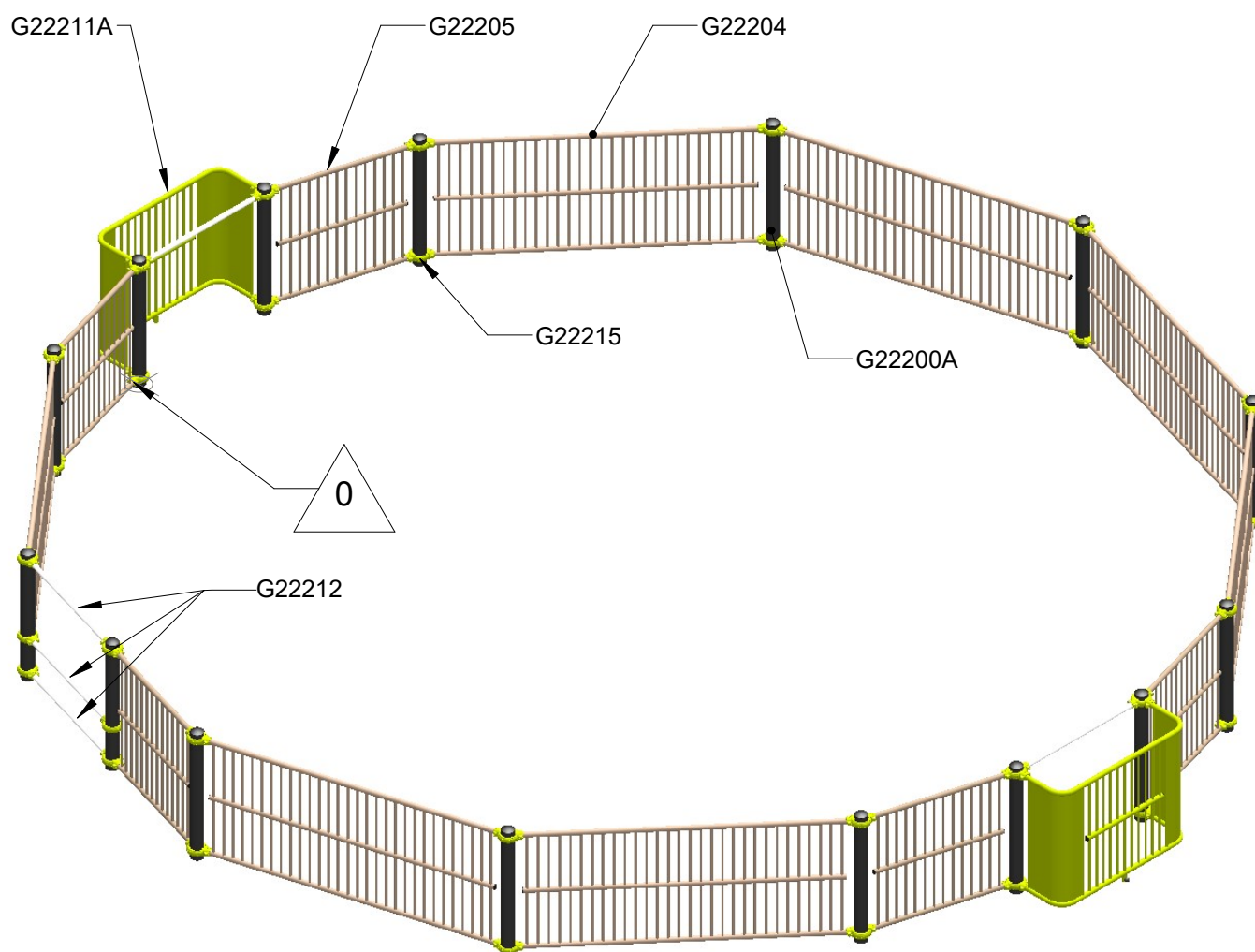
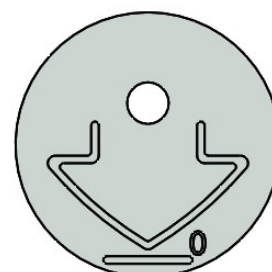


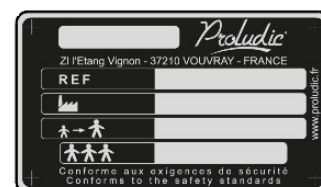
Réf	Qté
G22200A	15
G22204	7
G22205	5
G22211A	2
G22212	3
G22215	32

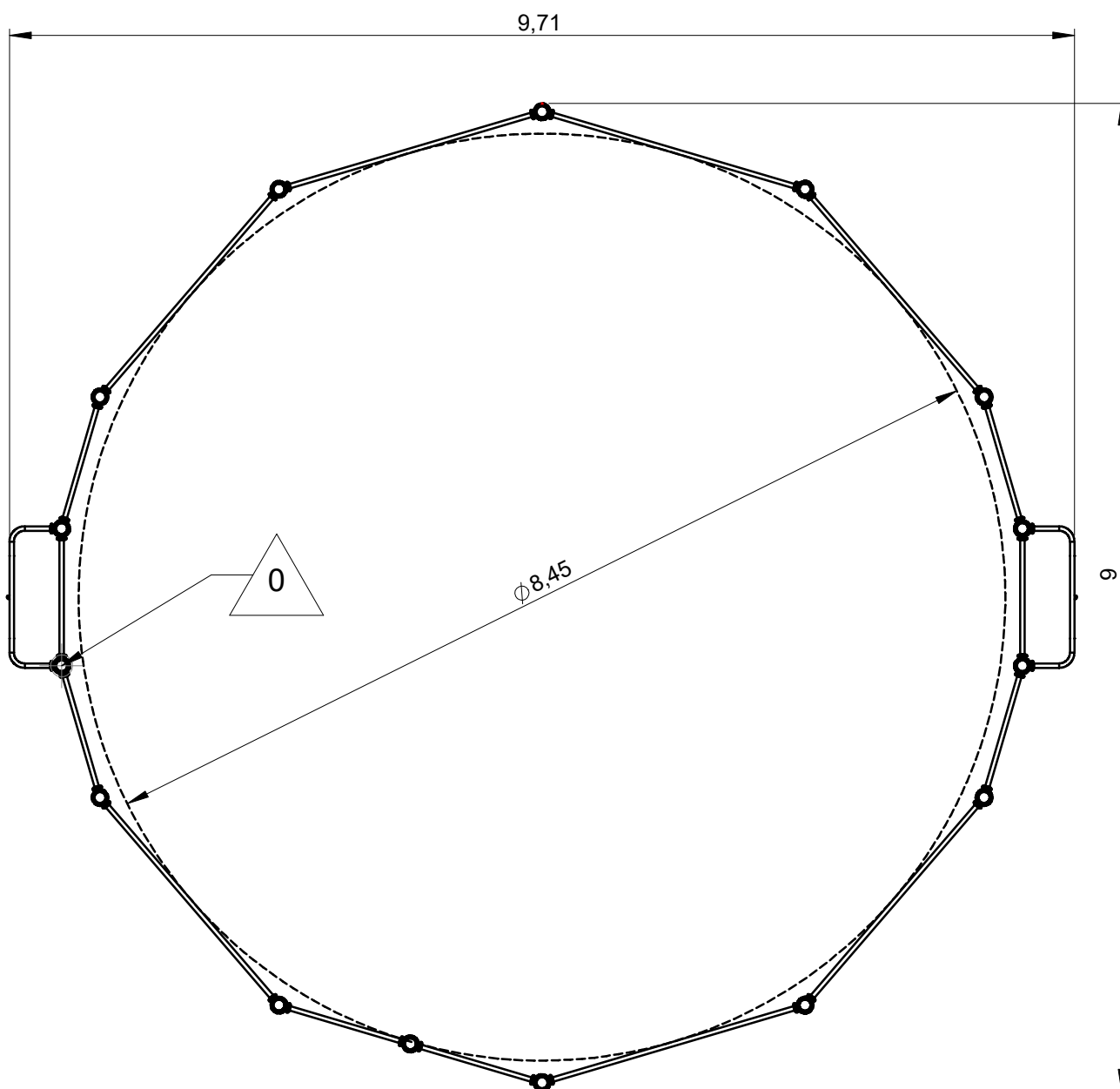
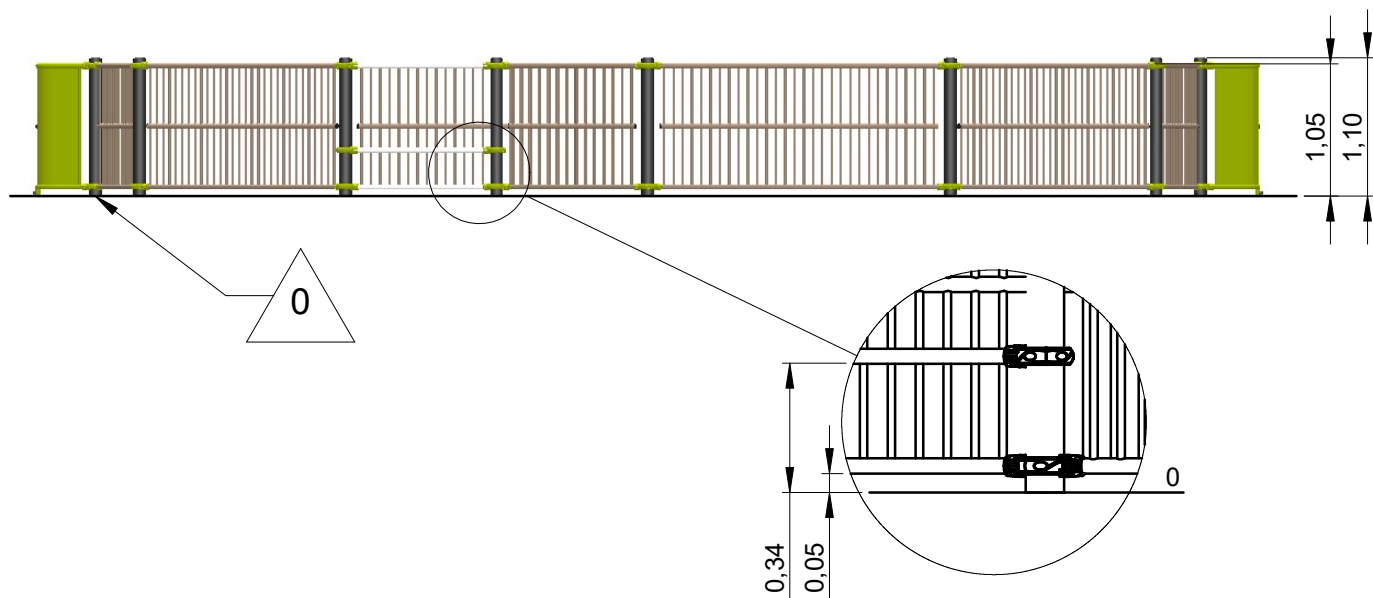


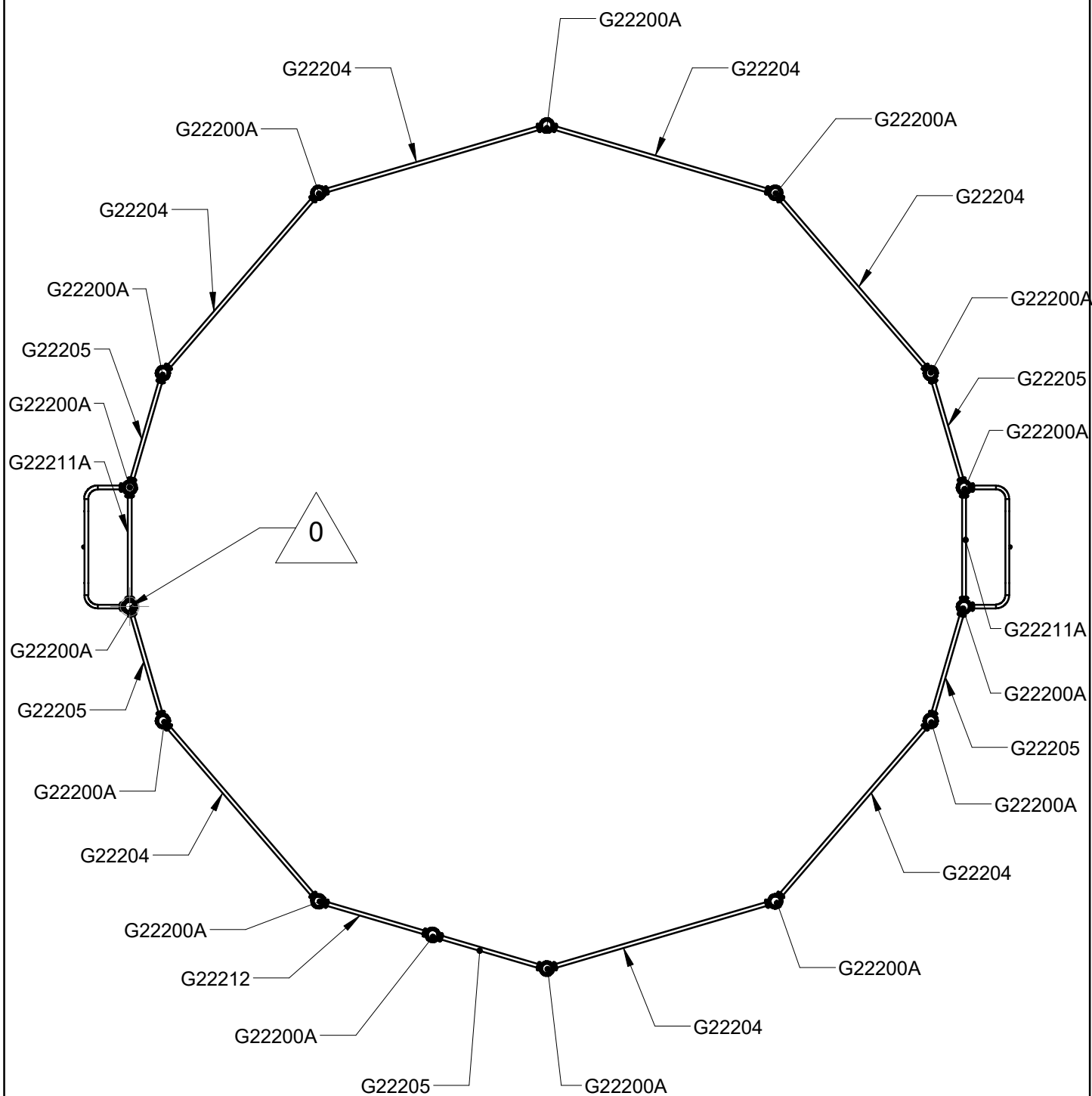
MI0002



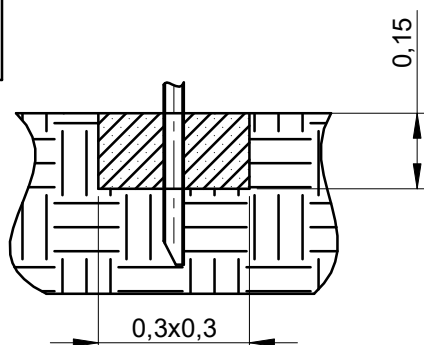
LA000



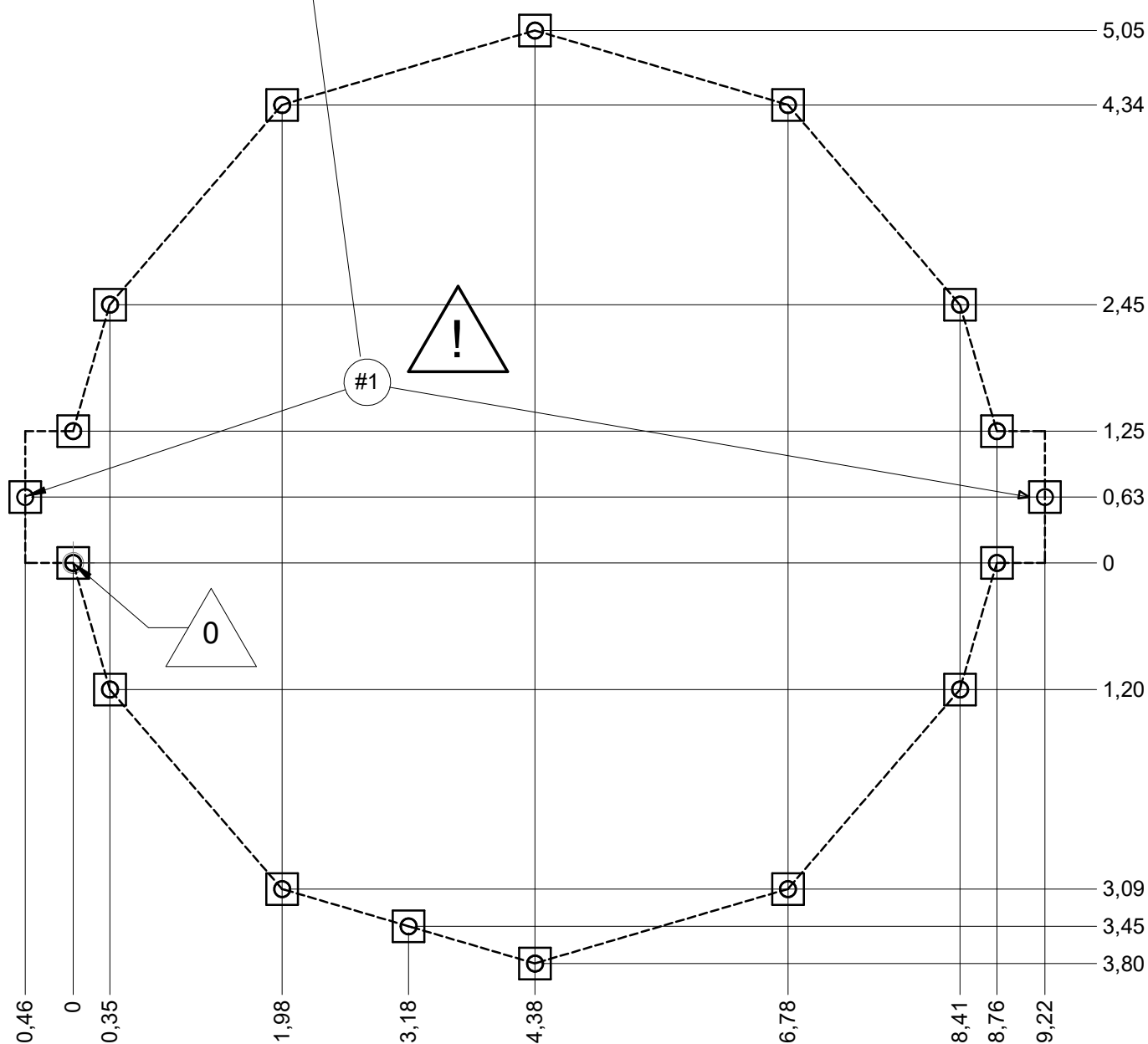




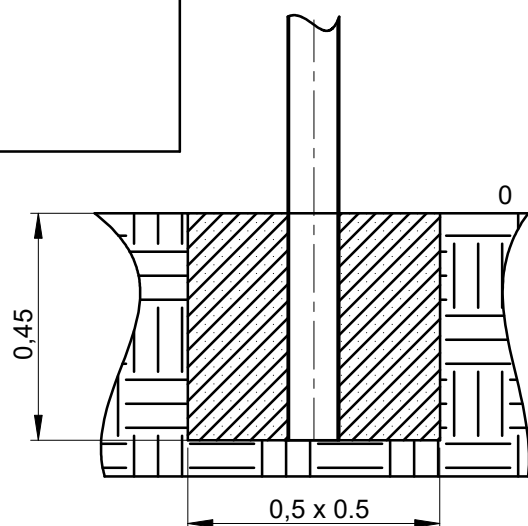
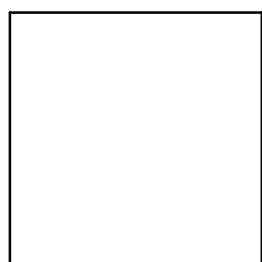
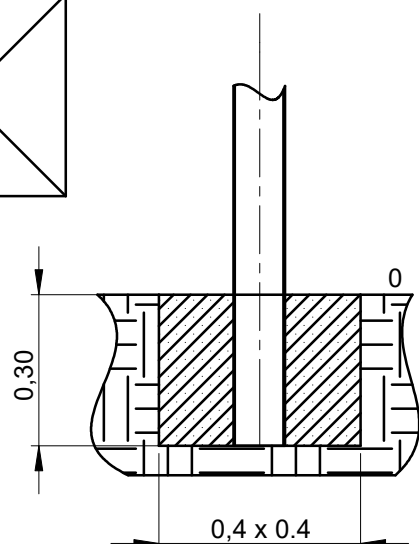
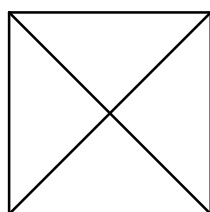
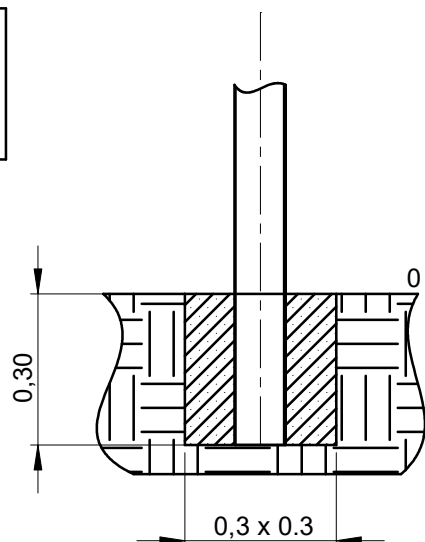
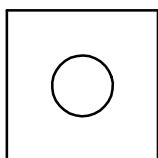
#1



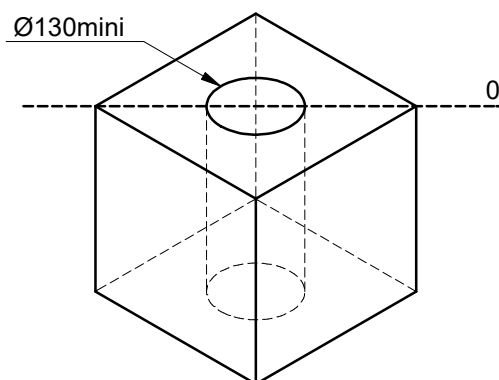
Implantation
Footing plan
Implantación
Fundamentplan
Funderingstekening



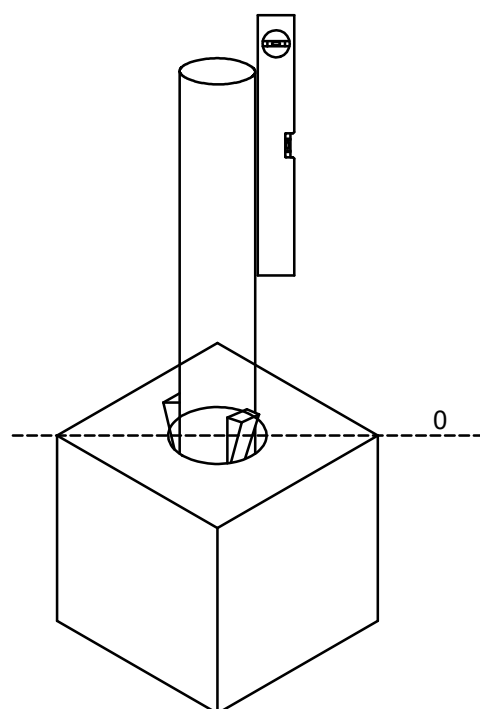
	x	y	z	w
	0.3	0.3	0.3	0.3
	0.4	0.4	0.3	0.3
	0.5	0.5	0.45	0.45



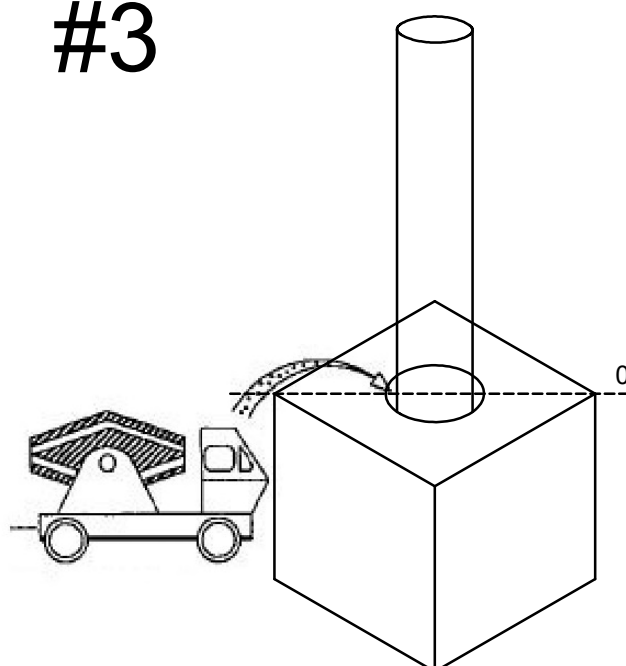
#1

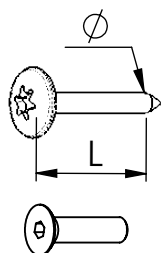


#2



#3





VBT 6 x 30
Ø L (mm)

VFHC



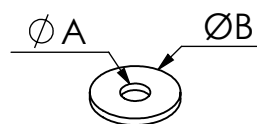
VEC M10
Ø



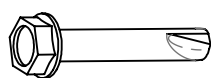
VEF



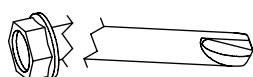
VEB



VR6x18
ØA ØB



VTHA

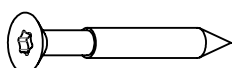


1000 - 1800 tr/min

Vitesse de rotation
Rotation speed

14 N.m

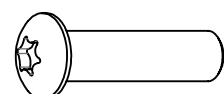
Couple de rupture
Torque of break



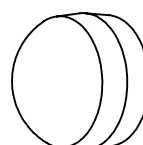
VWT



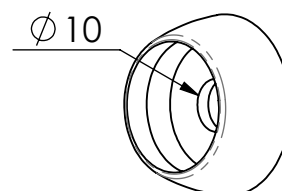
VGC



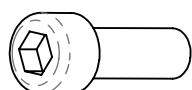
VCBHC



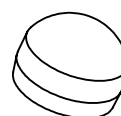
M10 440N



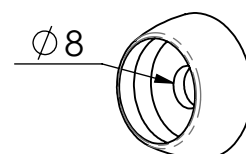
M10 310 N



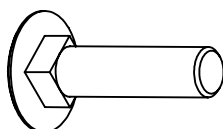
VBTR



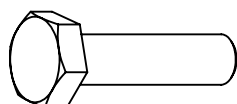
M8 440N



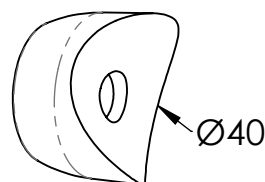
M8 310N



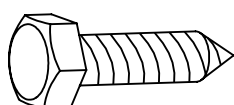
VTRCC



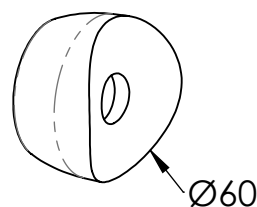
VTH



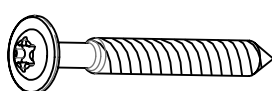
MI2503



VTF



MI2701



VBT

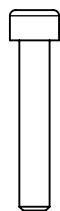
' 1 .

FJBFHDEFI

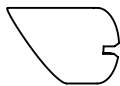
Prodic

FfZ	E hf
ø 5 8 8 8 \$ % L	&
J 7 6 < 7 A * 8) =	&
J 9 6 A *	&

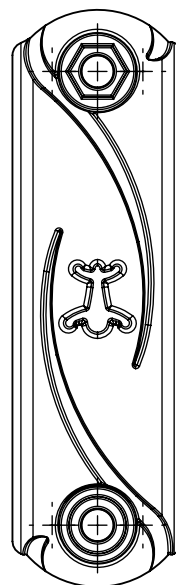
FfZ	E hf
@5&&&\$J L	&
A & \$, J L	(
J 6F, L ()	&
J 9: A ,	&



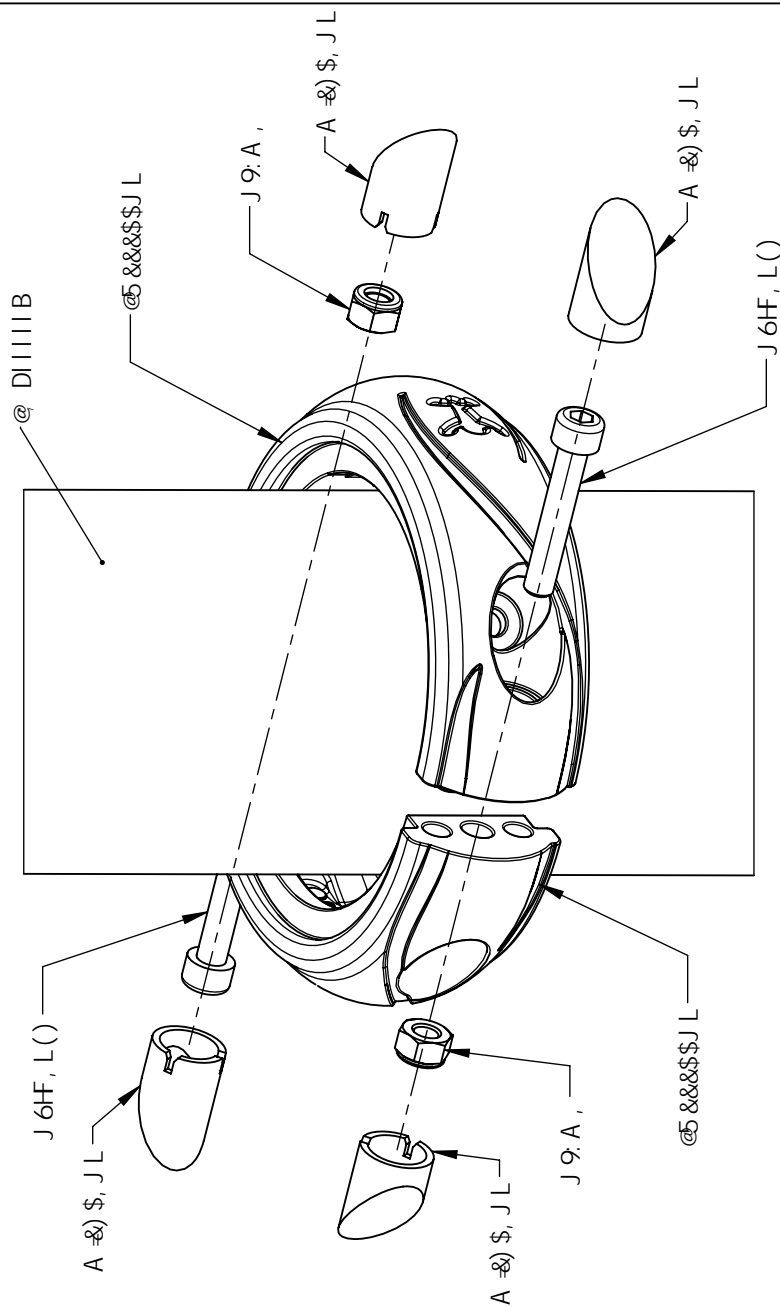
J6HF, L()

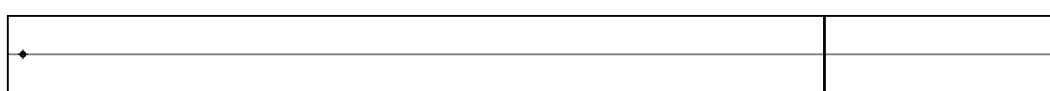
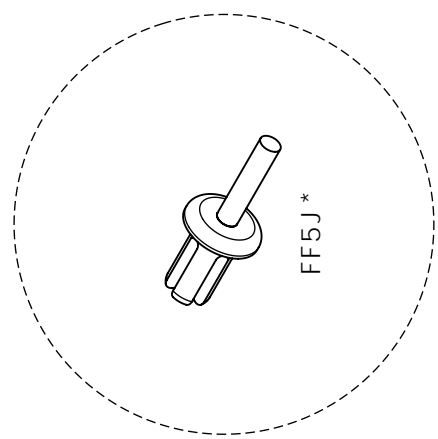
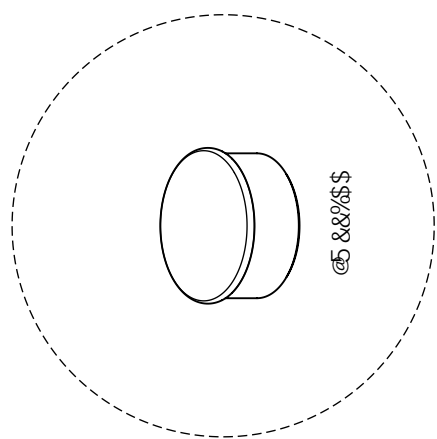
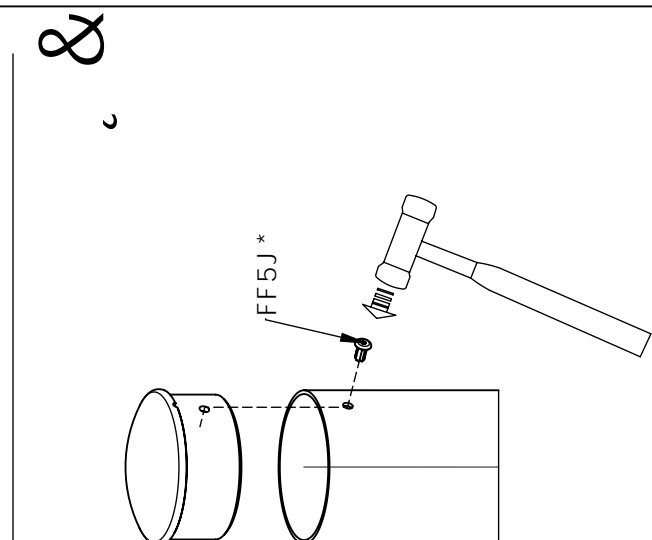
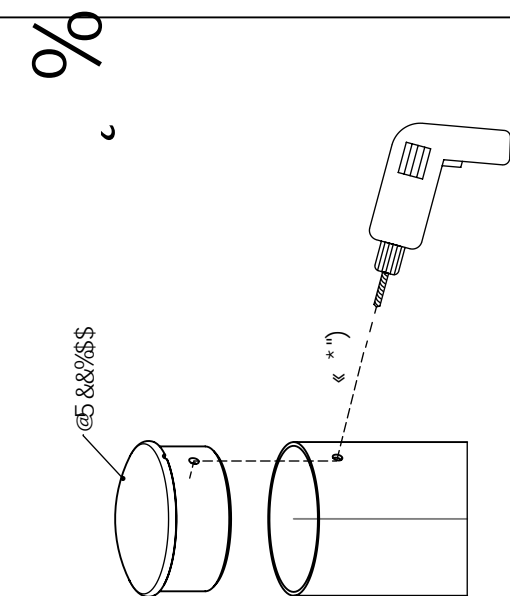
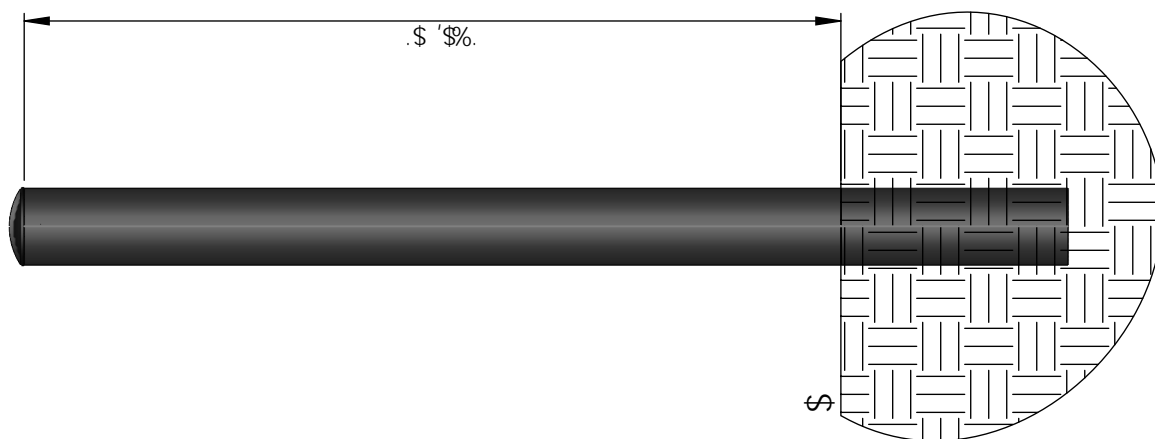
A ~~&~~) \$, JL

J9: A,



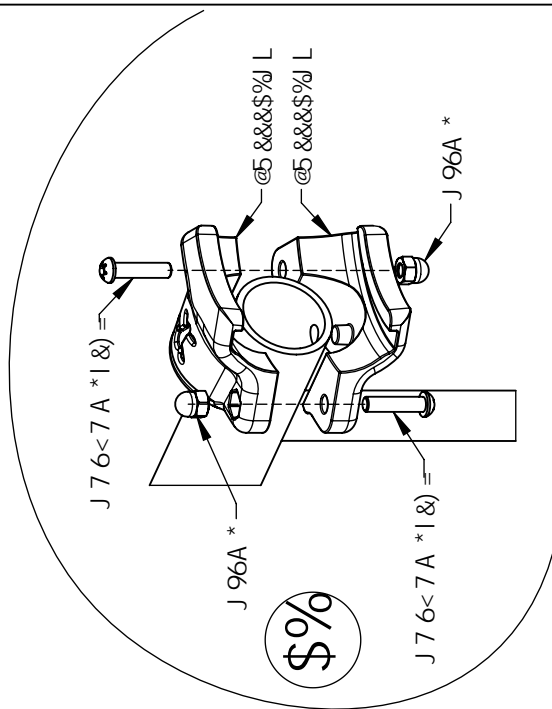
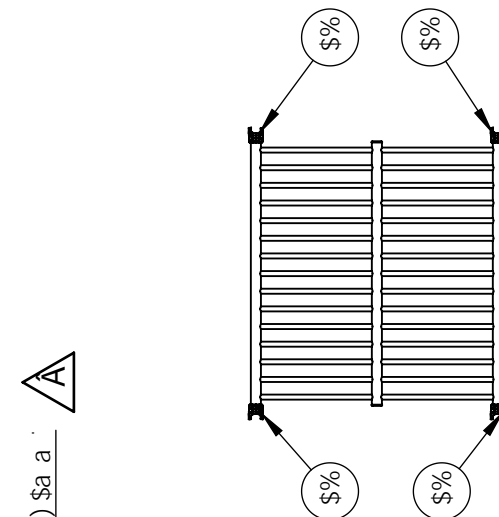
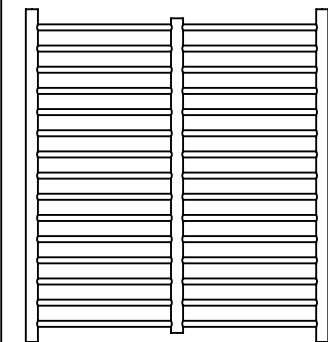
@5&&&\$J L



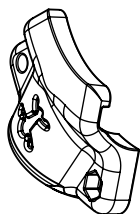
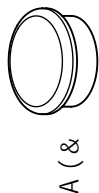


④ D&&\$ (B

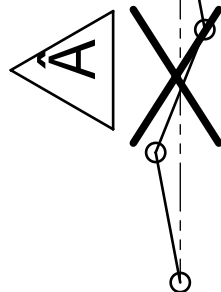
FfZ	Enf
@5&&%%\$	%
@ D&&&\$(B	%
FF5J *	%

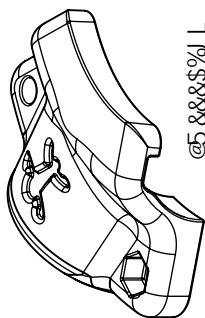


FfZ	E hf
@5&&\$* ; 69	%
A (&	&
@5&&\$%L	,
J 7 6< 7 A * &) =	,
J 9 6 A *	,

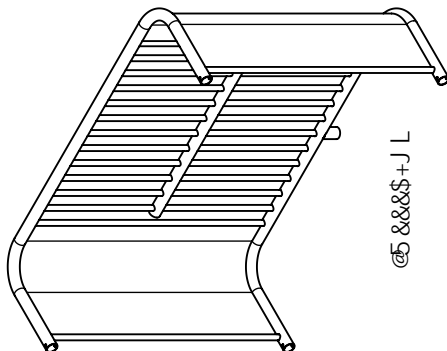


@5 &&\$%L

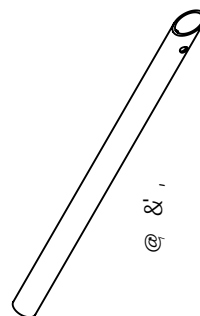


[illegible]

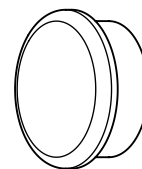
@5 &&&\$% L



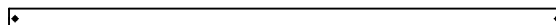
@5 &&&\$+J L



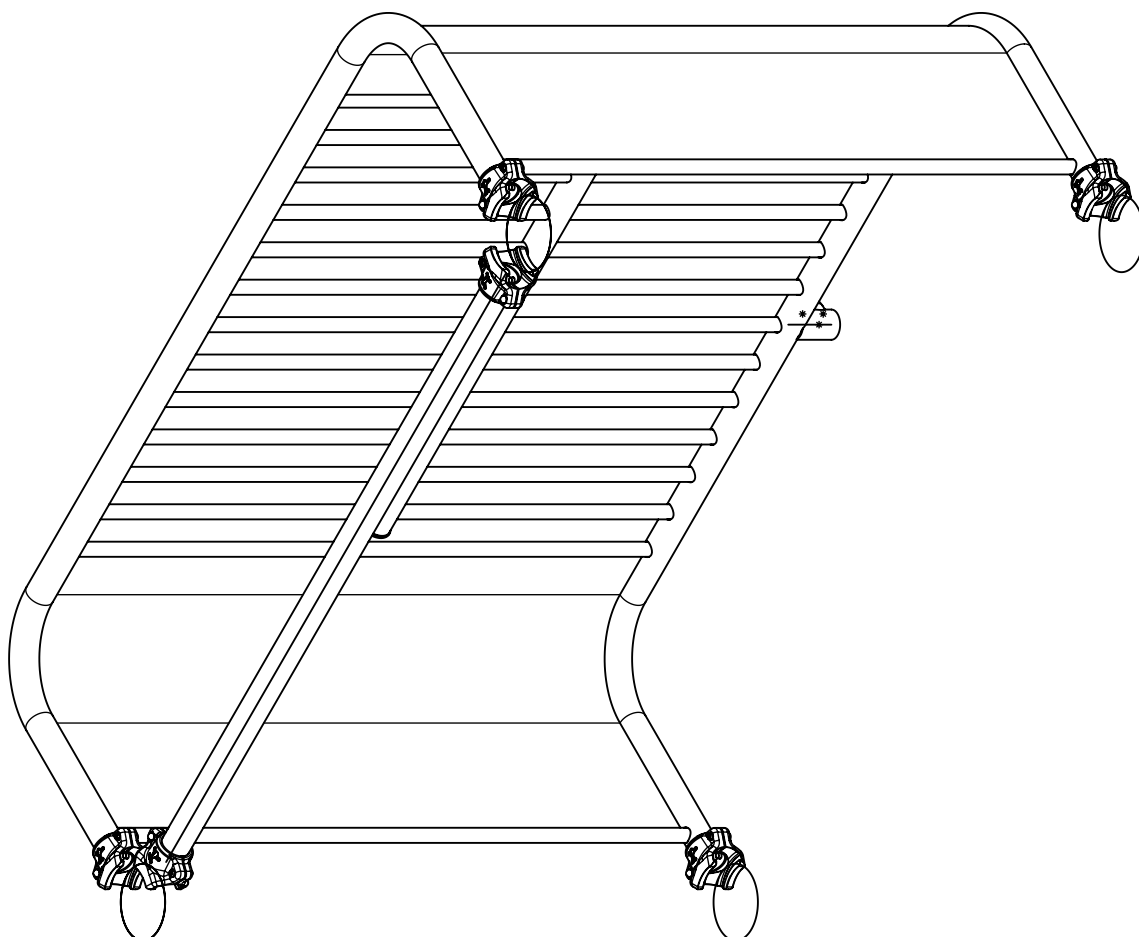
ॐ
ॐ

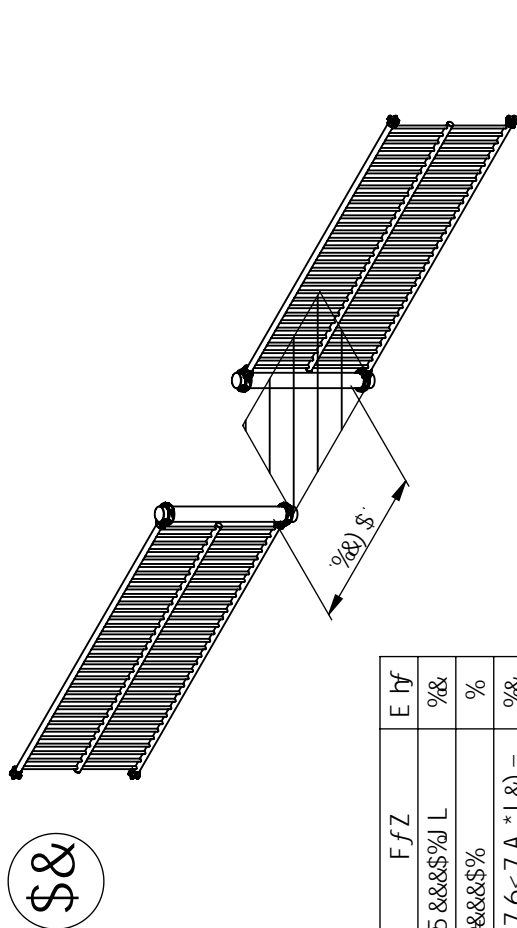


A (&



@&&&\$%

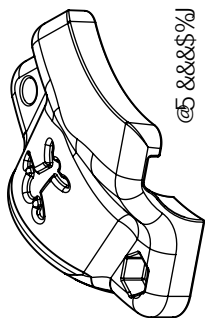




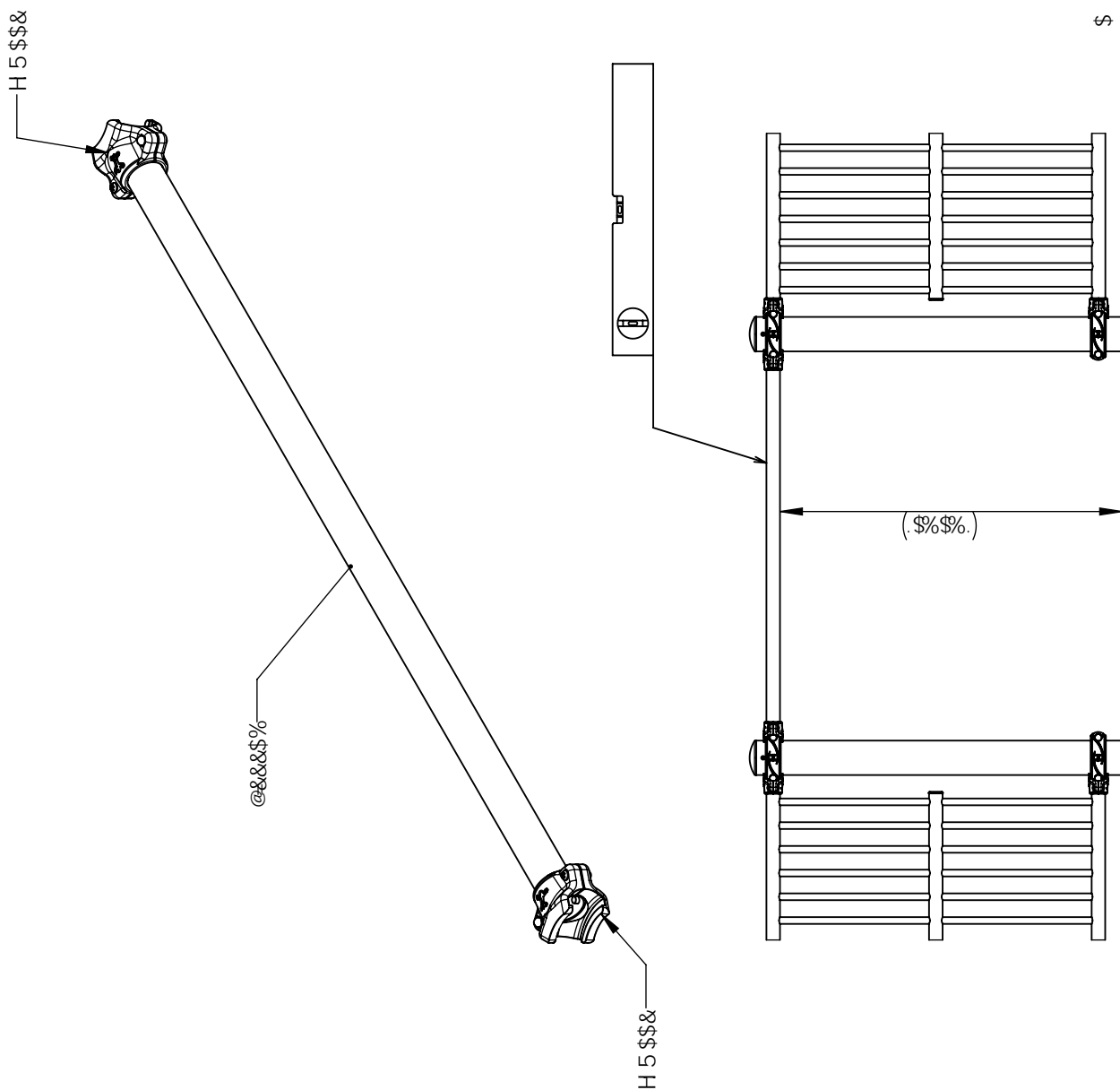
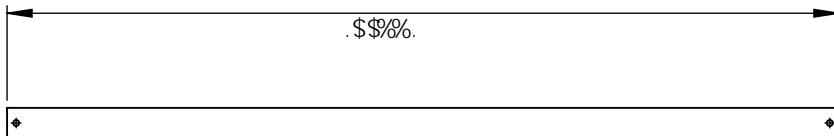
FfZ	E hf
@5 &&\$%L	%&
@&&\$%	%
J 7 6<7 A * &)=	%&
J 96A *	%&

FfZ	E hf
5 &&\$+J L	%
@ &' ,	%
A (&	&
A %\$((\$B	%
A &) \$' B	%
JF, l %	%
JH* l' \$5	,

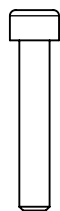
FfZ	E hf
5 888\$%l L	(
8888\$%	%
J 7 6<7 A *l &)=	(
J 96A *	(



@5 &&&\$%L



FfZ	E hf
@5 &&&\$J L	&
A &J\$, J L	(
J 6F, L ()	&
J 9: A ,	&



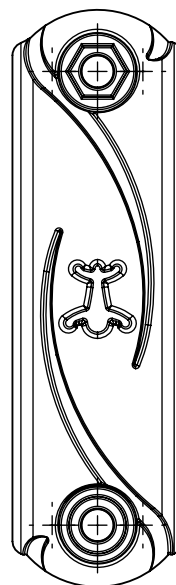
J6HF, L()



A ~~&~~) \$, J L



J9: A,



@5&&&\$J L

