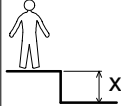
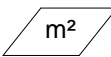




N°		
1	0.6 m	10.5 m ²
2	1 m	6 m ²
3	1.17 m	20.5 m ²

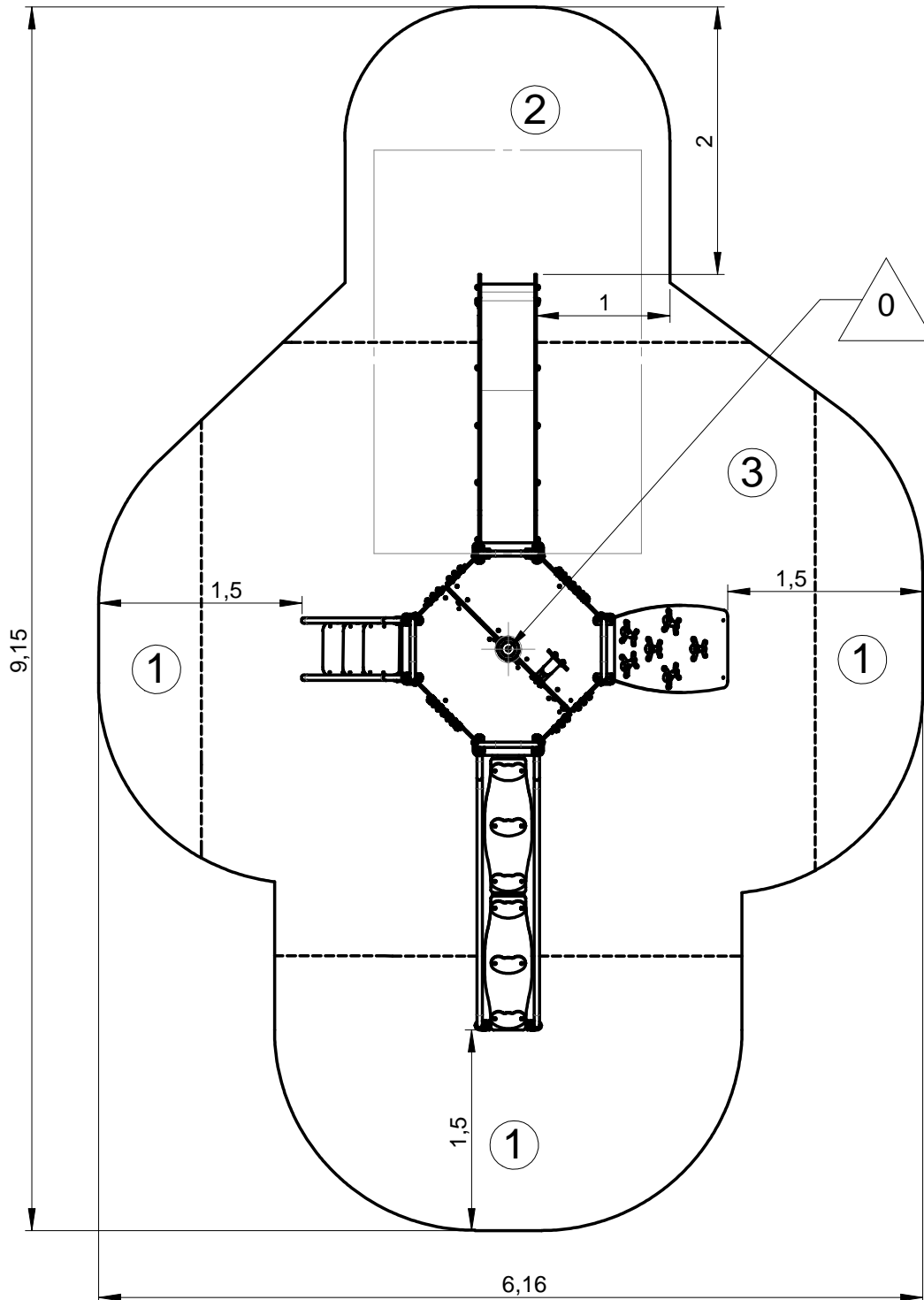
— Zone d'impact
Impact area
Area de impacto
Fallraum
Valzone

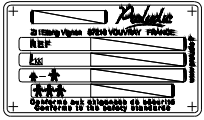


Point de référence
Setting out point
Punto de referencia
Bezugspunkt
Referentiepunt

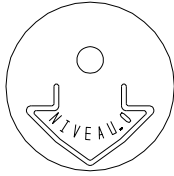
- - - Espace libre
Free space
Espacio libre
Freiraum
Vrije ruimte

EN1176-1:2017
EN1176-3:2017

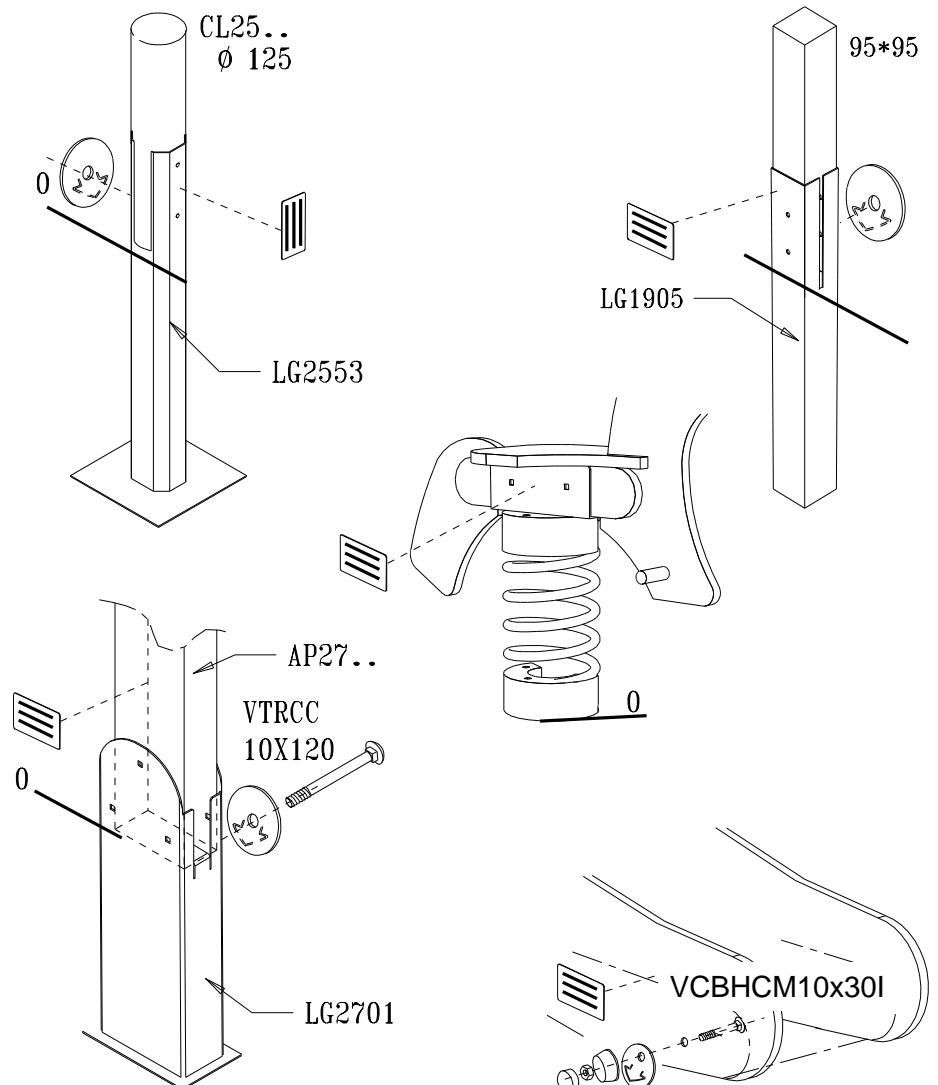
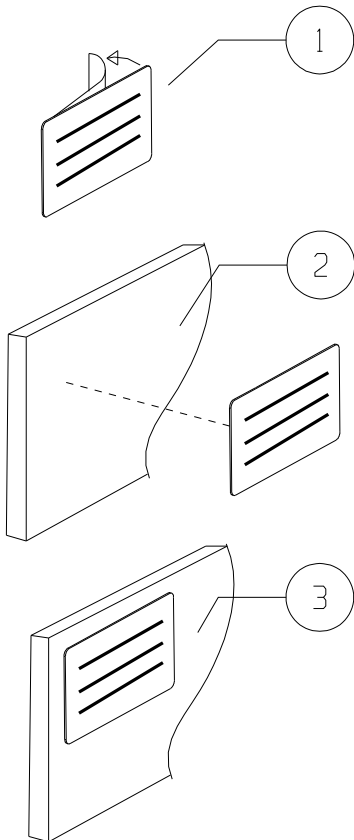
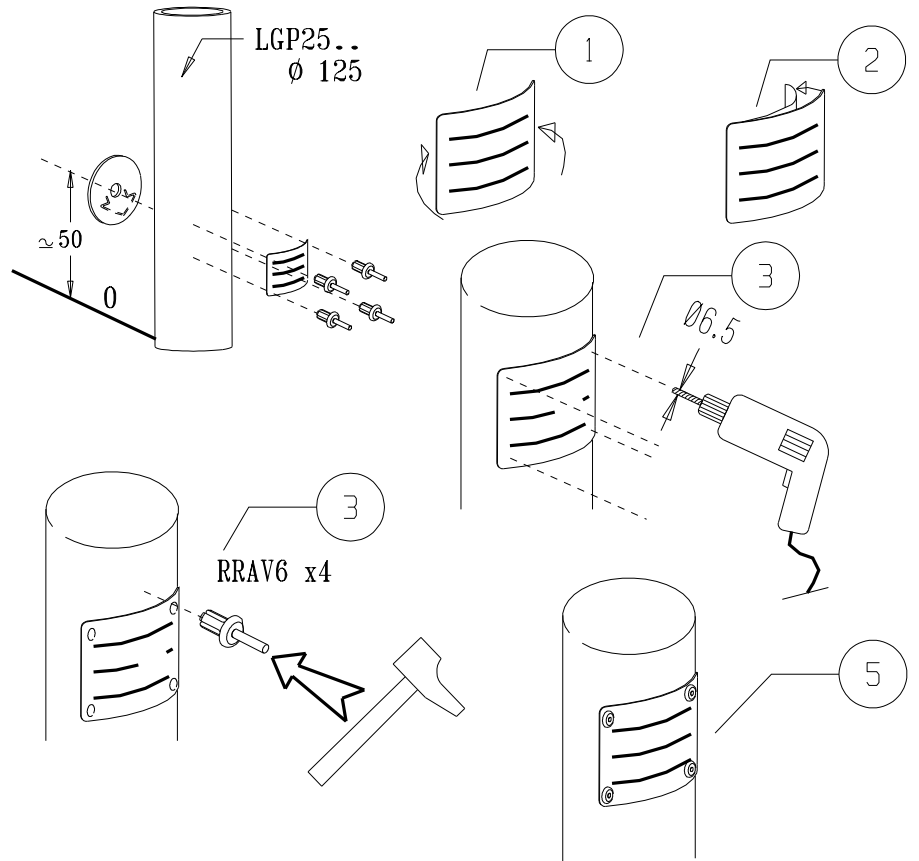


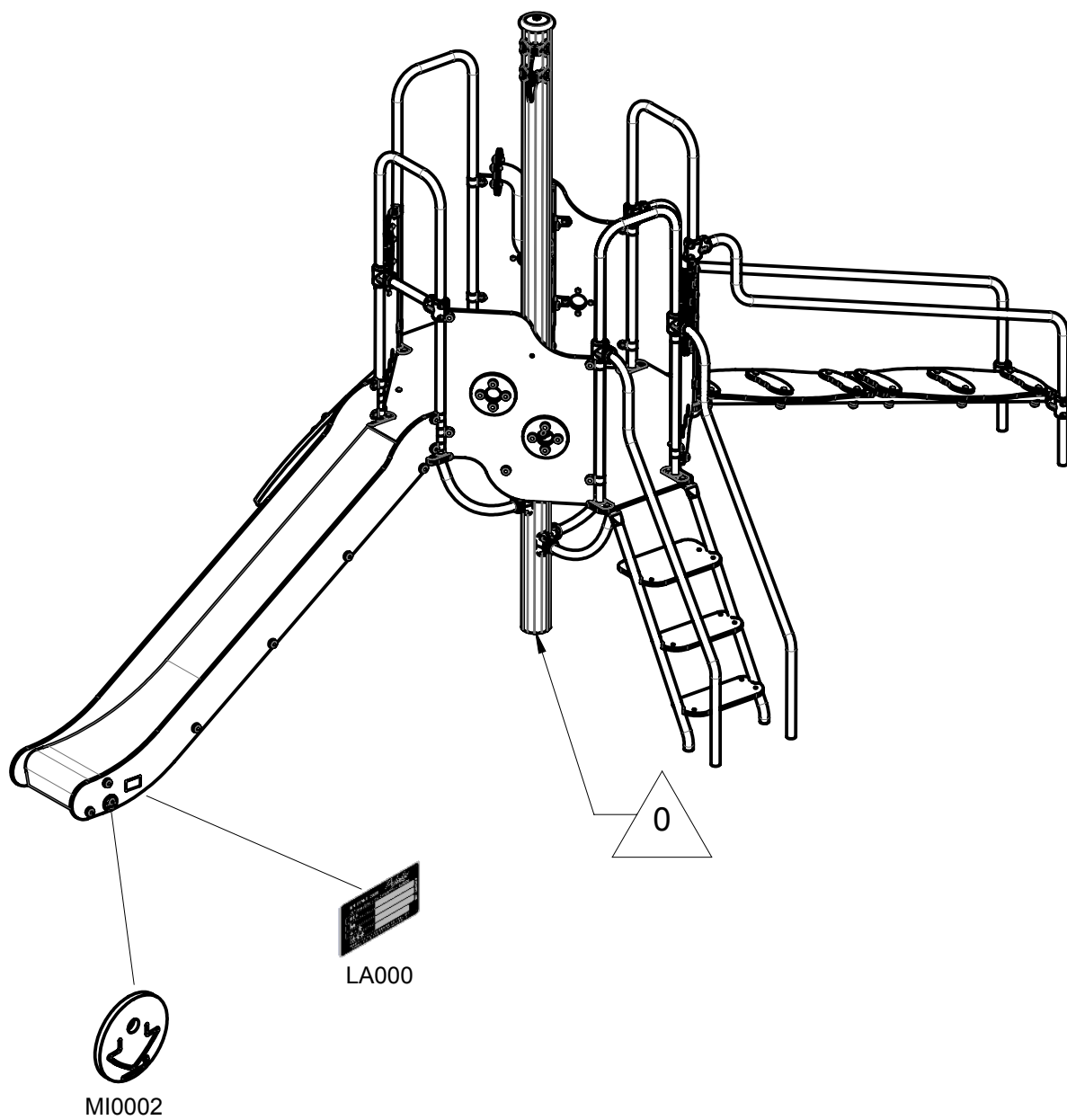


LA000



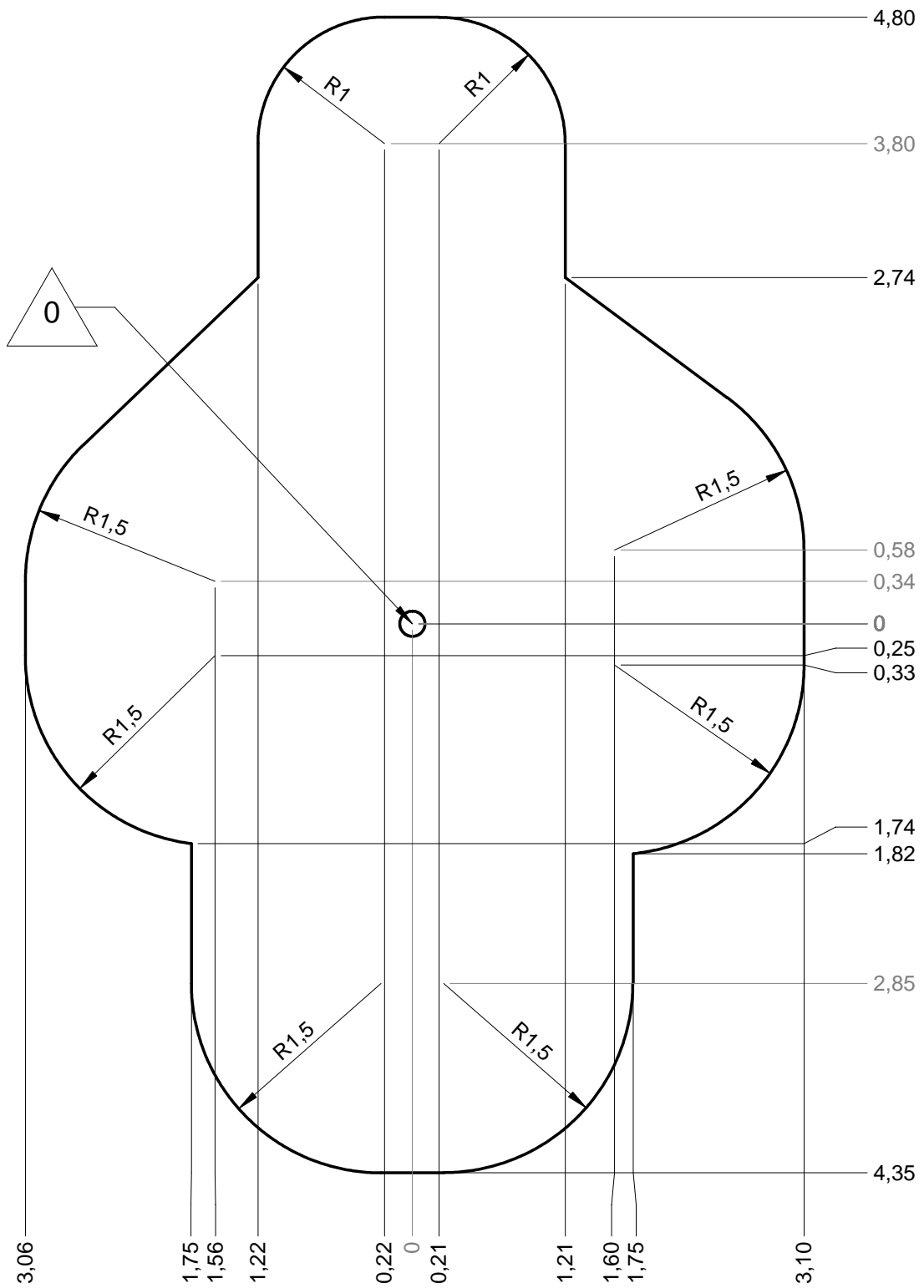
MI0002





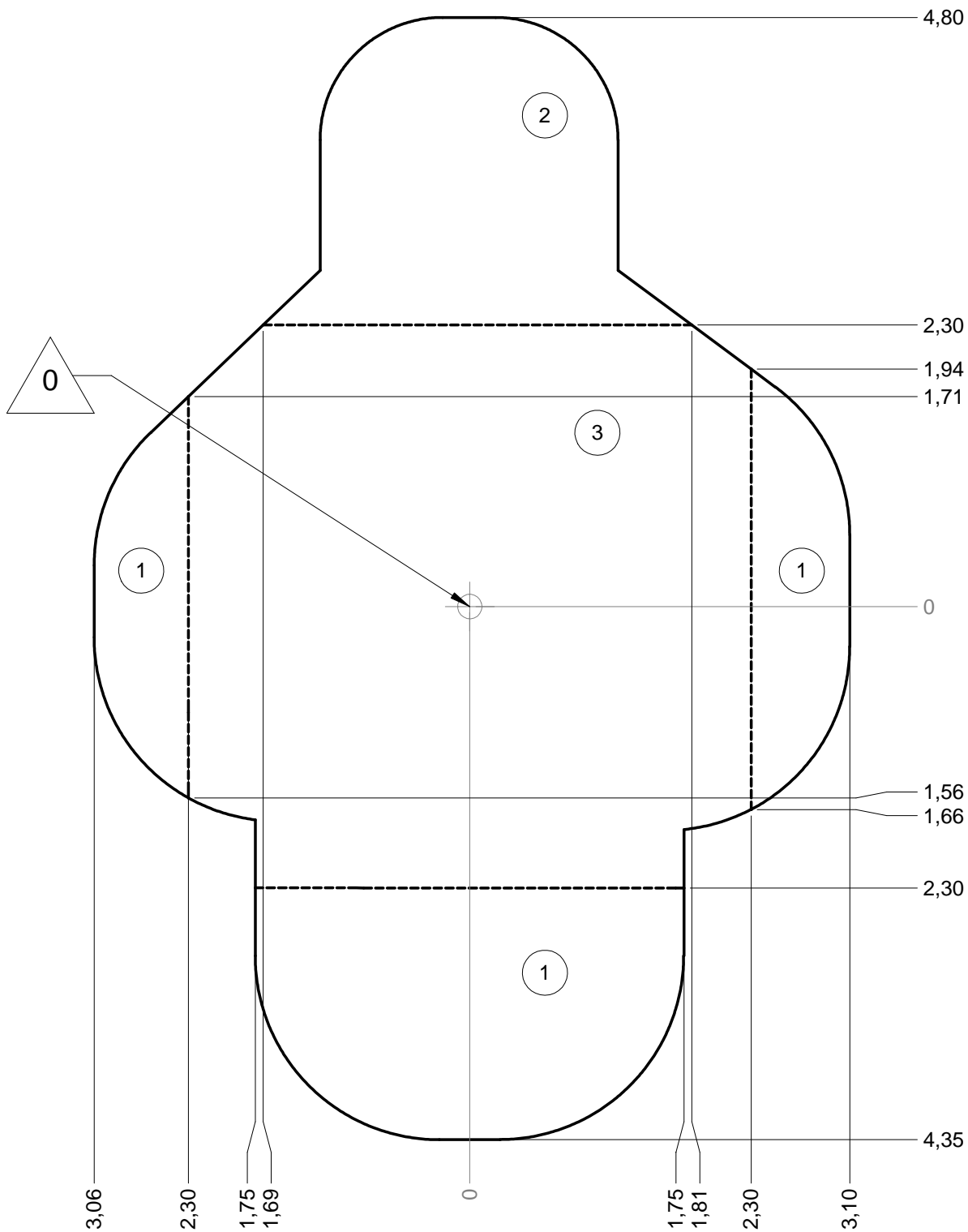
— Zone d'impact
 Impact area
 Area de impacto
 Fallraum
 Valzone

36 m²



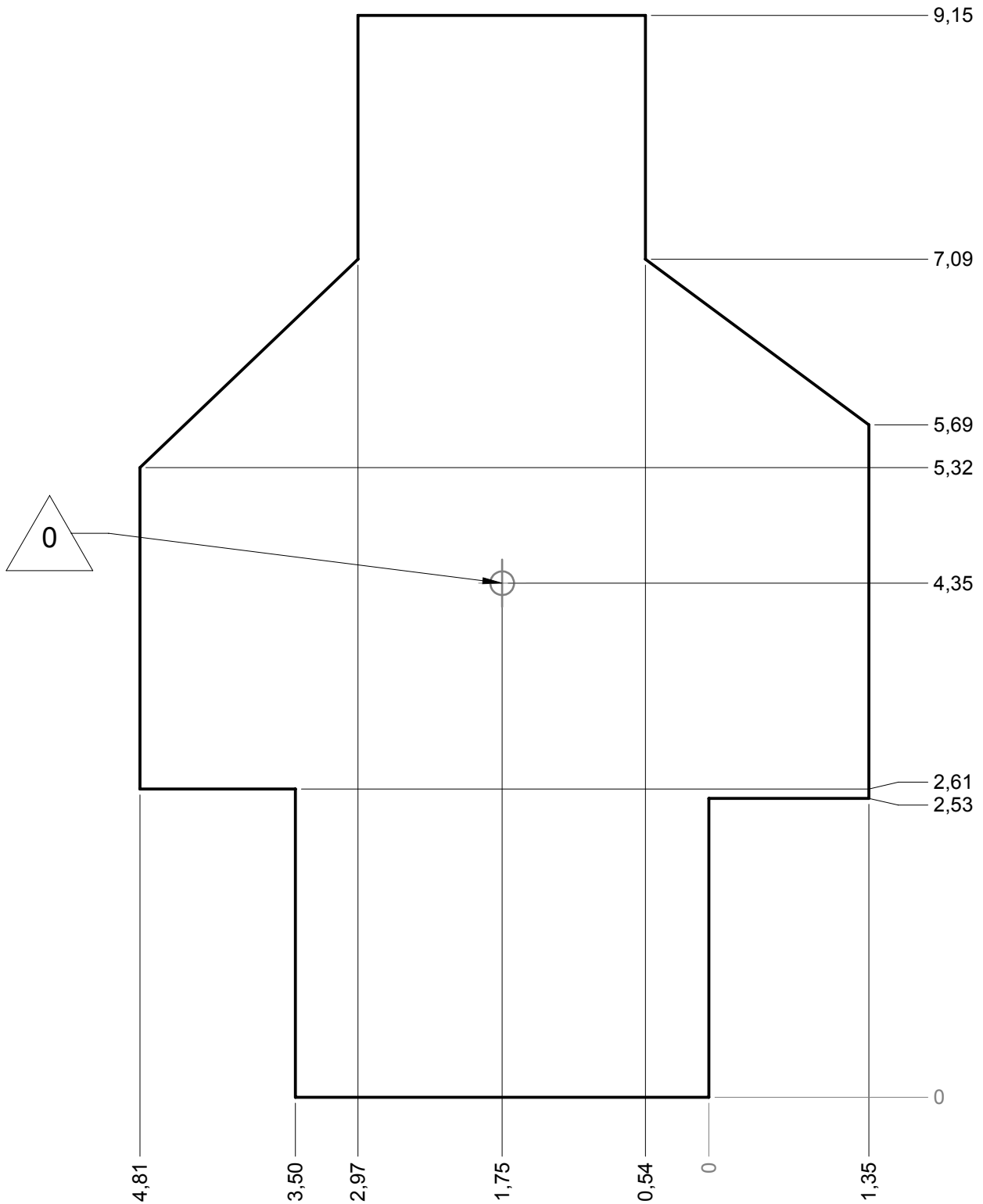
— Sol souple
 — Wetpour
 — Caucho continuo
 — Synthetischer Fallschutz
 — Gietvloer

36 m²

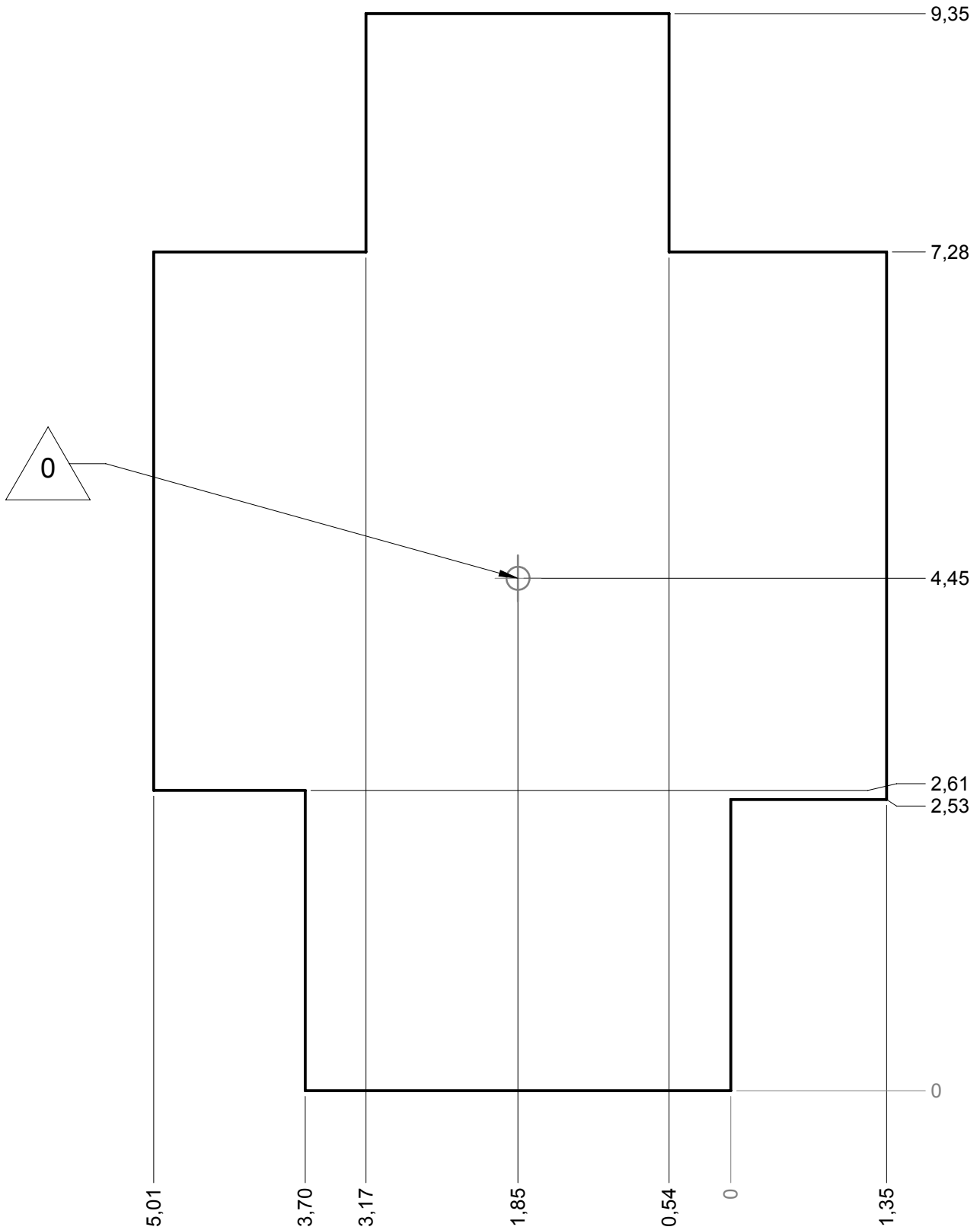


— Dalle béton
Concrete pad
Solera de hormigon
Beton Bodenplatte
Betonnen bodemplaat

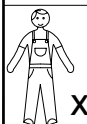
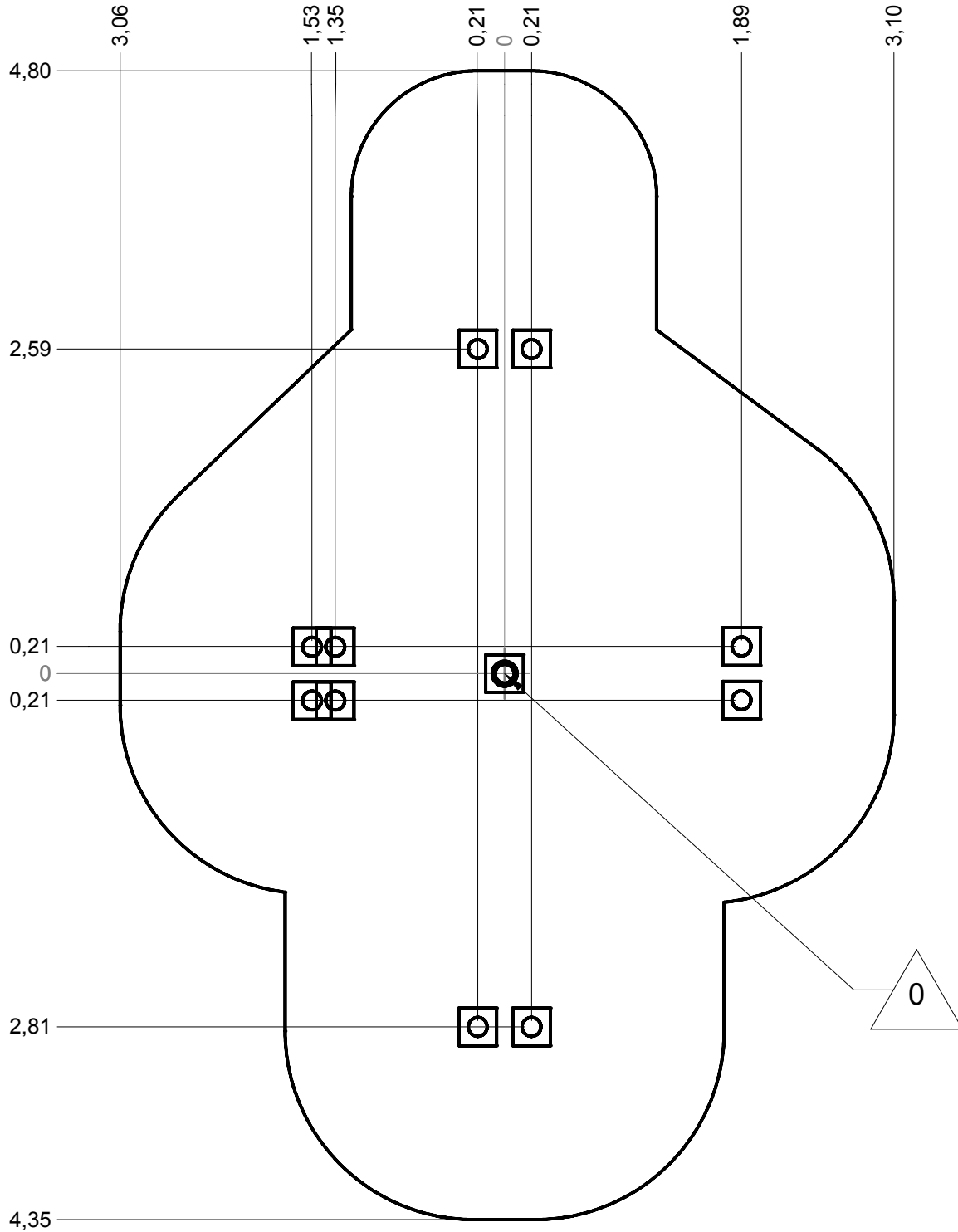
28.5 m
38.5 m²



— Sol fluent
 Loos partucule material **31.5 m**
 Arenero
 Loses Bodenmaterial **45 m²**
 Los bodemmateriaal



Implantation
 Footing plan
 Implantación
 Fundamentplan
 Funderingstekening



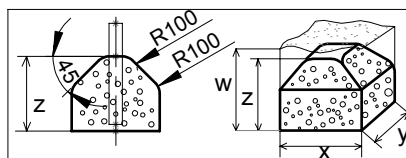
x2



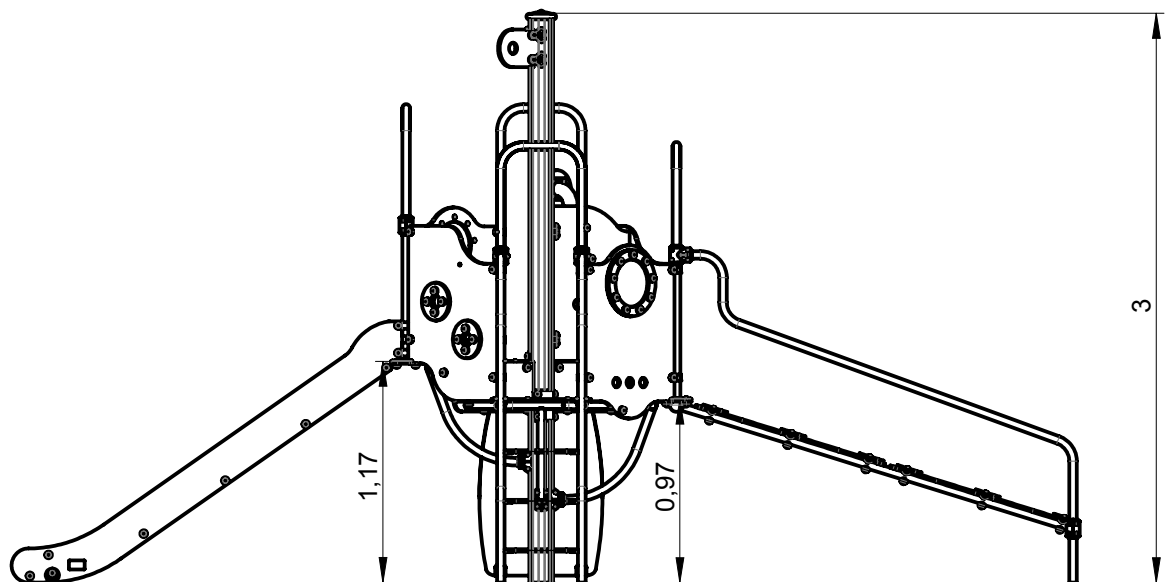
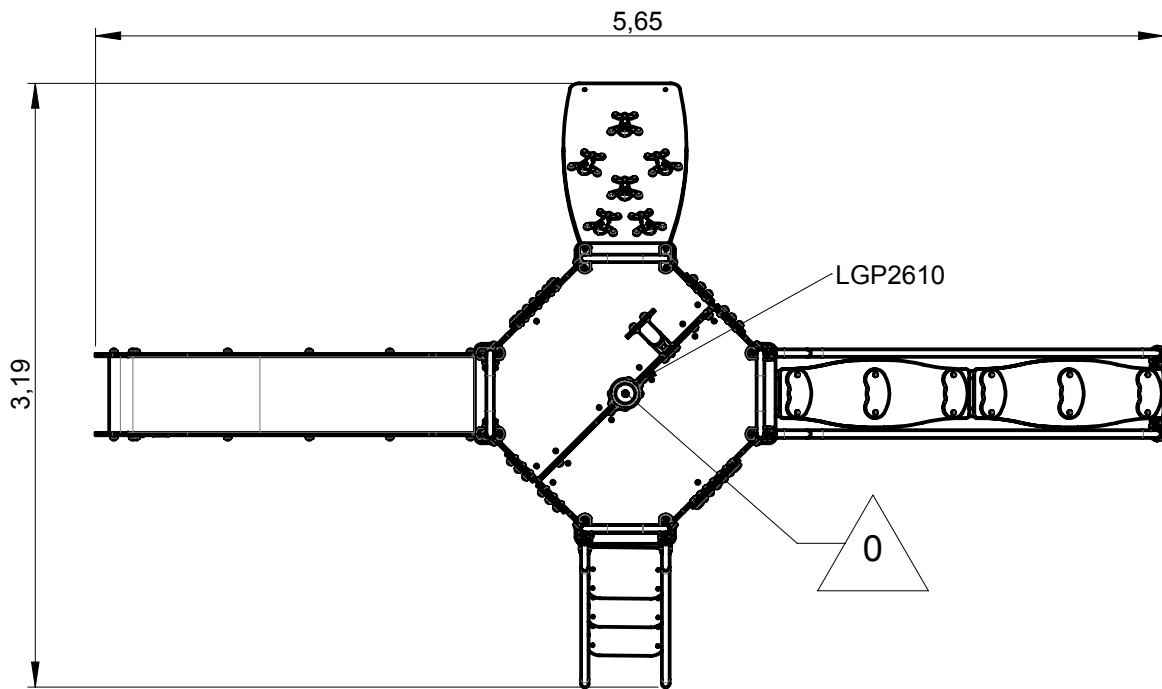
11h30H

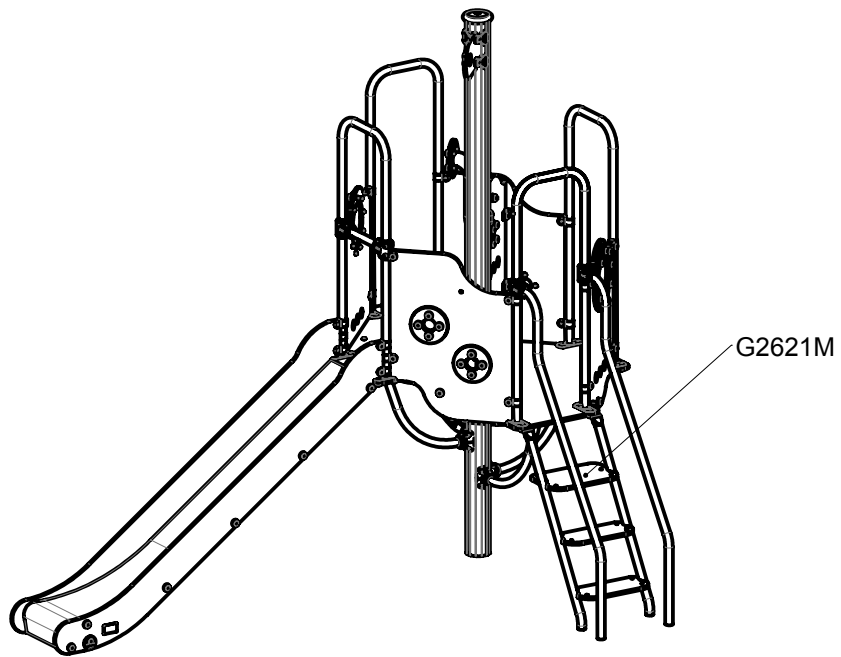
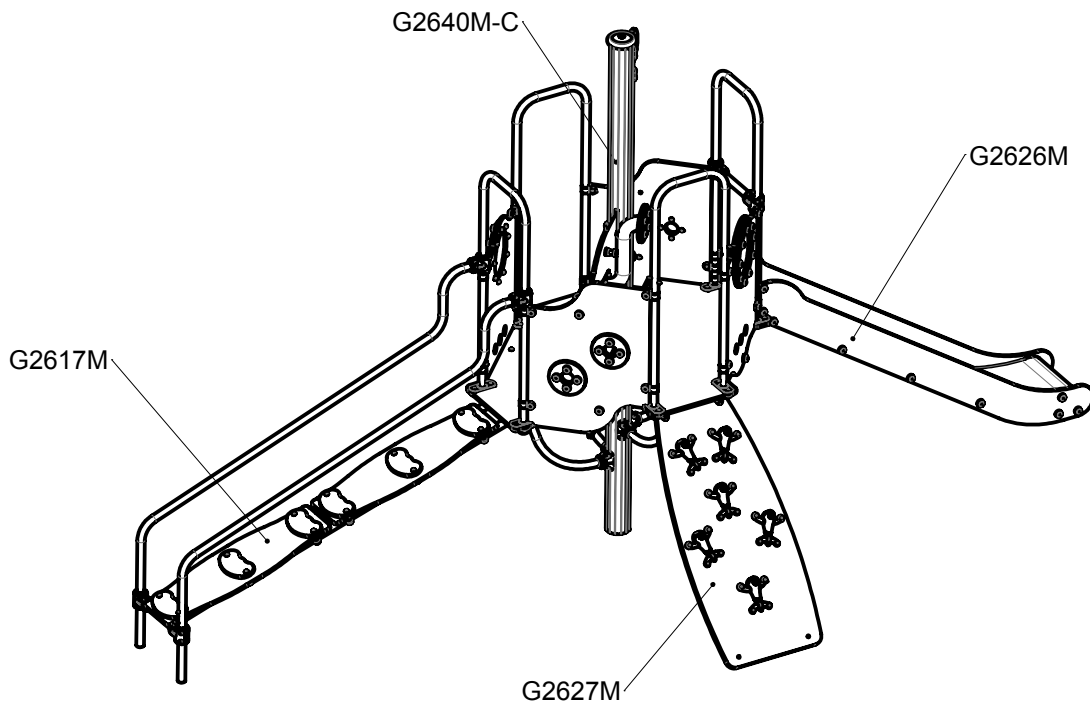


0.4 m³

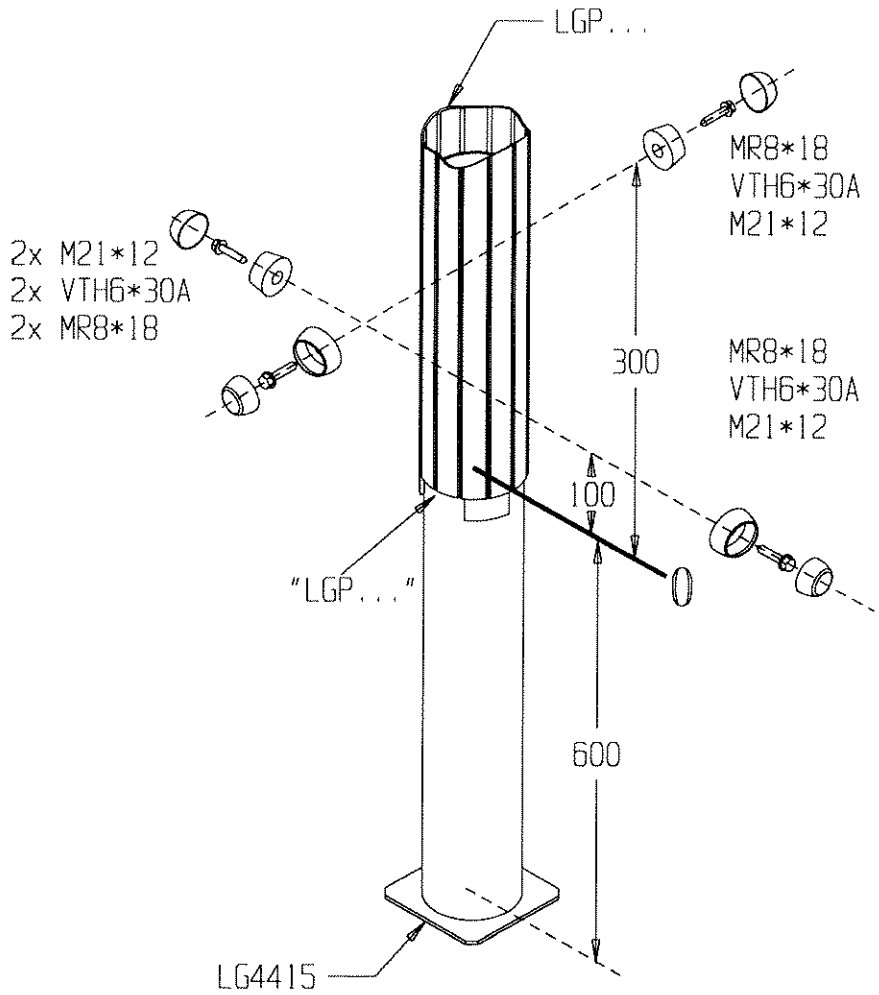


	x	y	z	w
	0.3	0.3	0.3	0.6
	0.4	0.4	0.3	0.6
	0.6	0.3	0.3	0.6



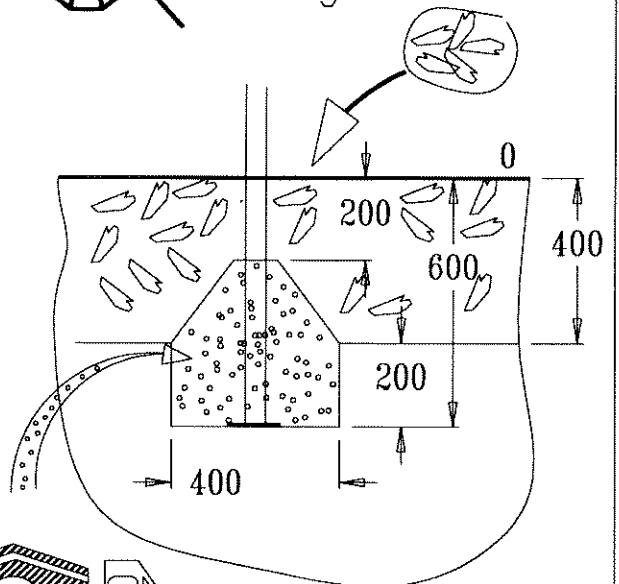
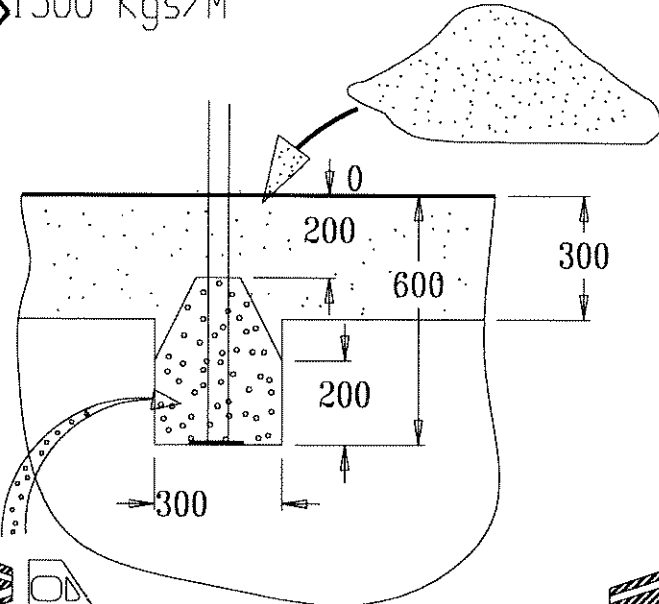


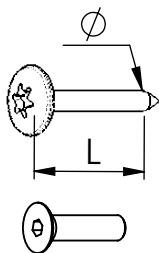
A



 > 1500 Kgs/M³

 < 1500 Kgs/M³





VBT 6 x 30
 \varnothing \uparrow L (mm)

VFHC



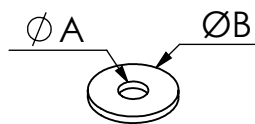
VEC M10
 \varnothing



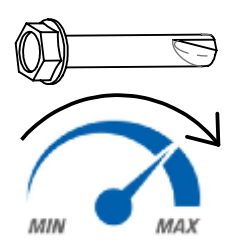
VEF



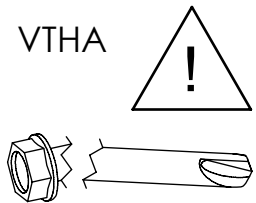
VEB



VR6x18
 $\varnothing A$ $\varnothing B$

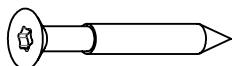


1000 - 1800 tr/min
 Vitesse de rotation
 Rotation speed

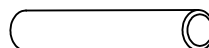


14 N.m
 Couple de rupture
 Torque of break

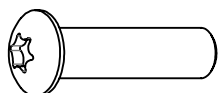
⚠



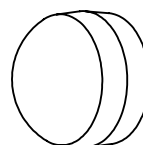
VWT



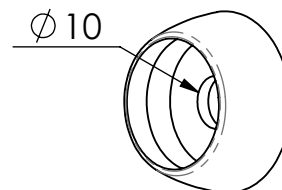
VGC



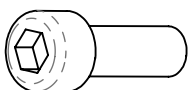
VCBHC



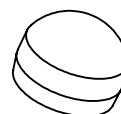
M10 440N



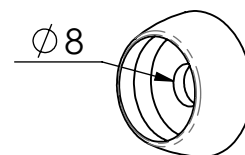
M10 310 N



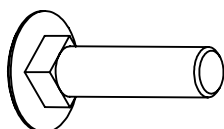
VBTR



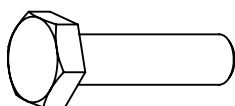
M8 440N



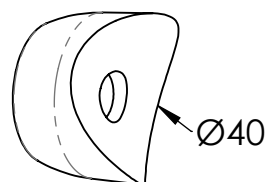
M8 310N



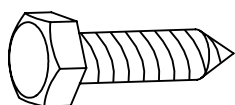
VTRCC



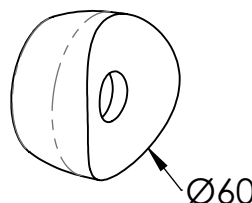
VTH



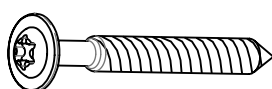
MI2503



VTF



MI2701

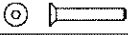





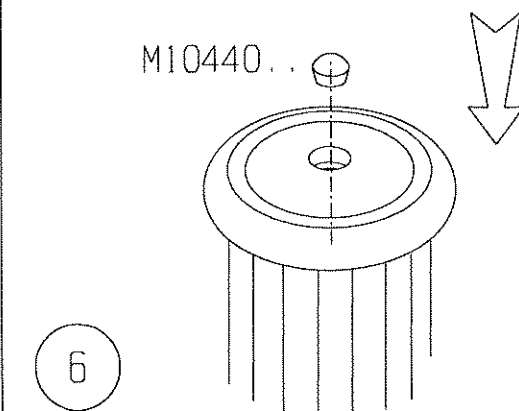
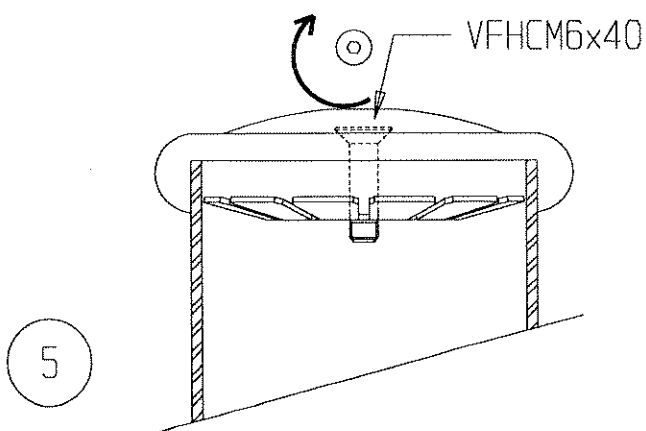
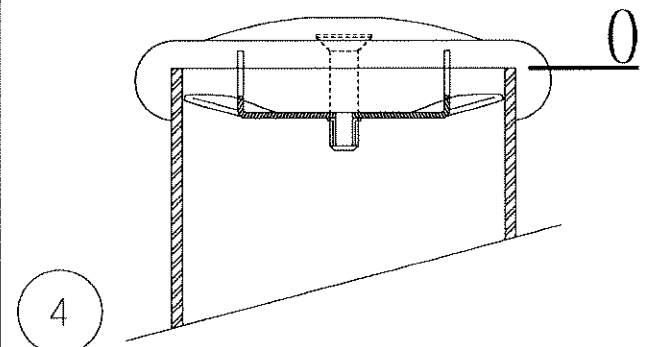
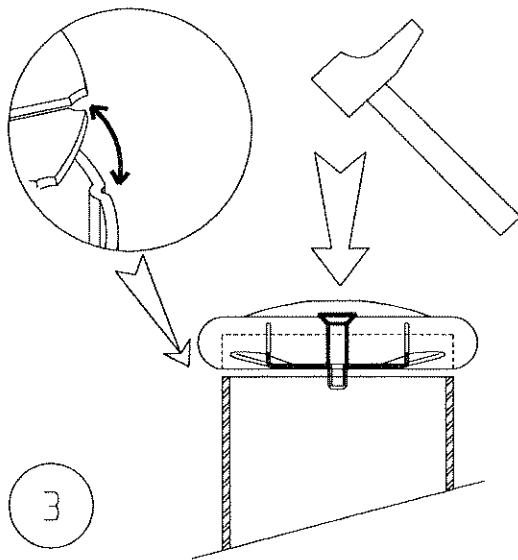
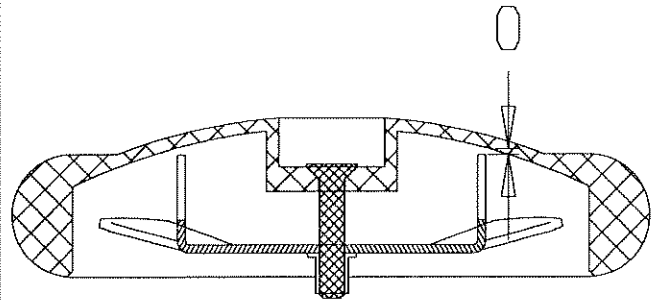
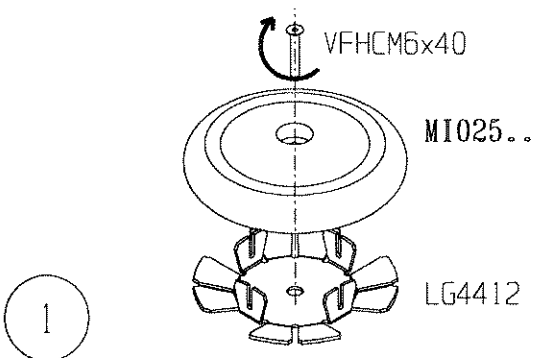
VBT

LG4412 + MI025 ..

ProLudic

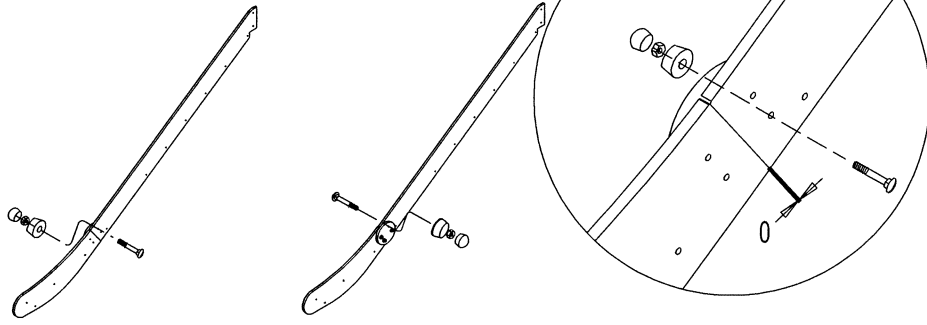
TEL : 02 47 40 44 44

	VFHCM6x40	1
	MI 025..	1
	M10440..	1
	LG4412	1

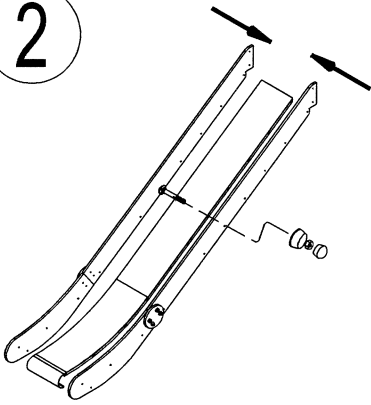


18-06-2006

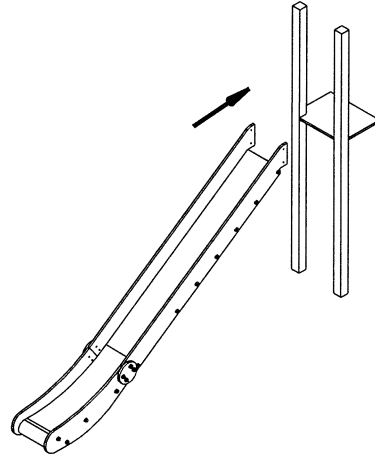
1



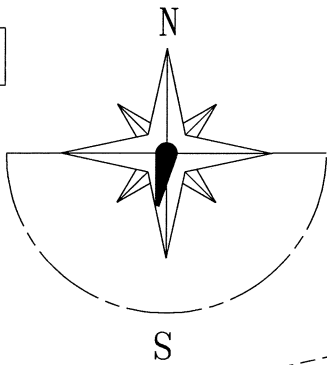
2



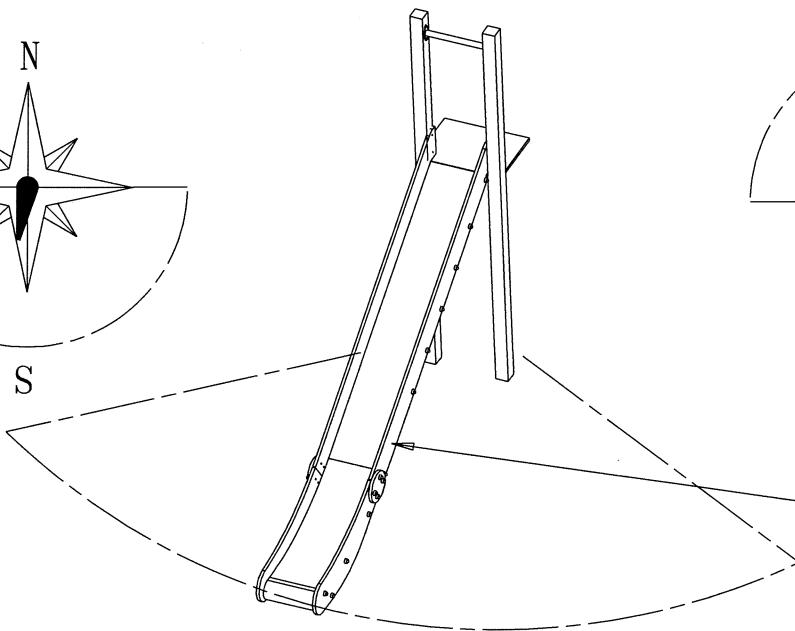
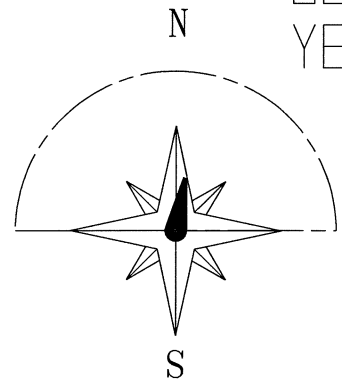
3



NON
NO



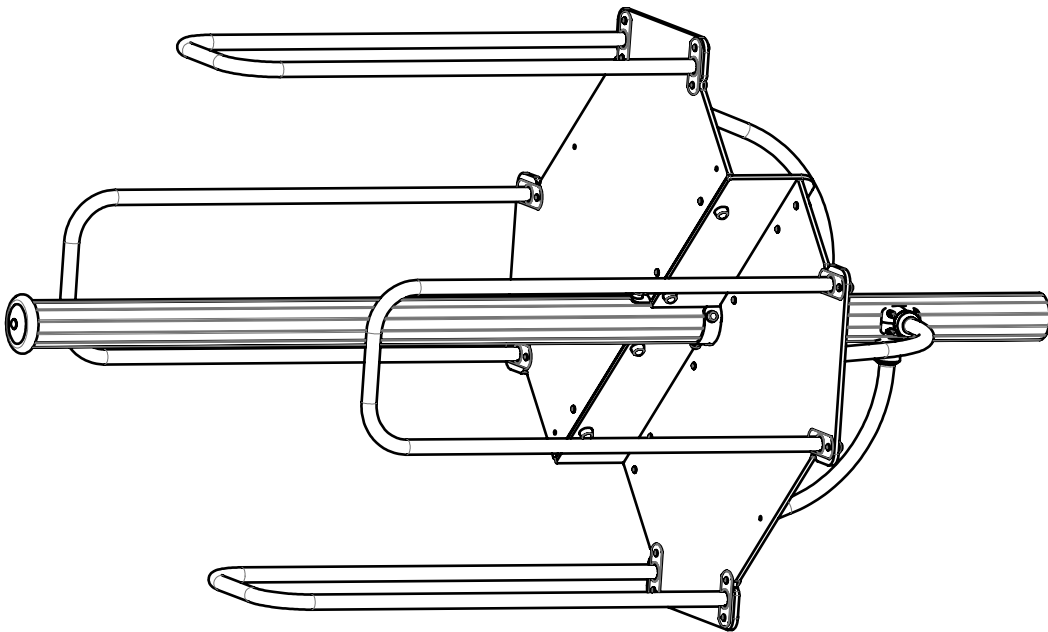
OUI
YES



STOBG

FR

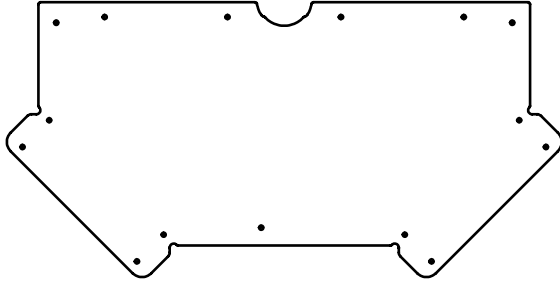
Il est recommandé de ne pas orienter la glissière Sud / Sud Ouest



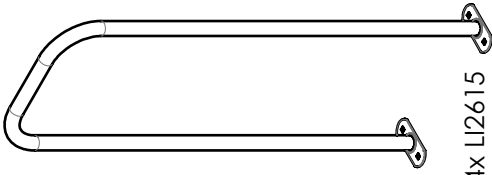
1x M1025



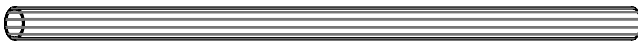
1x LG4412



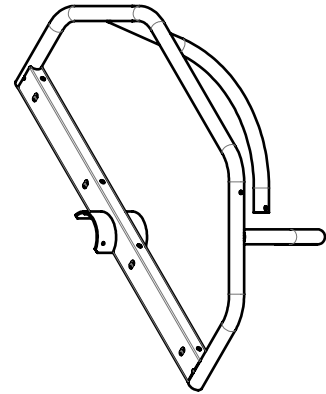
2x FT26002



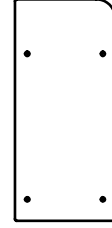
4x LI2615



1x LGP2610



2x LI26125

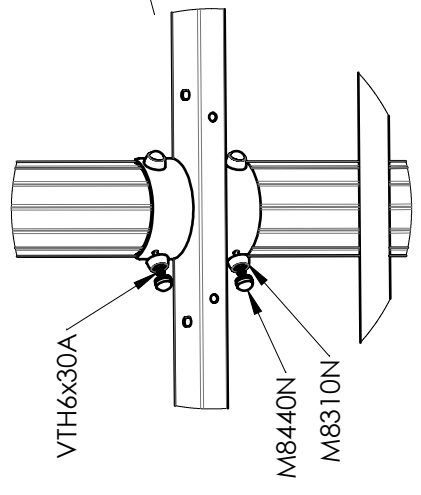
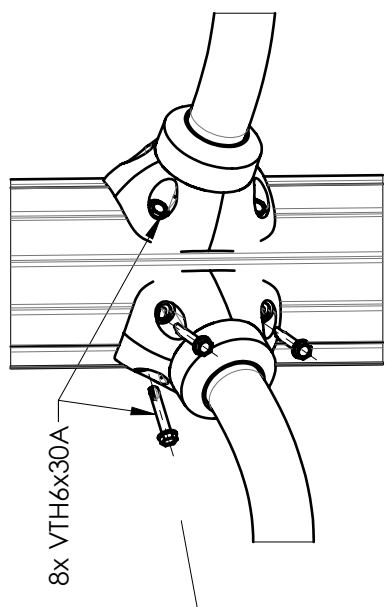
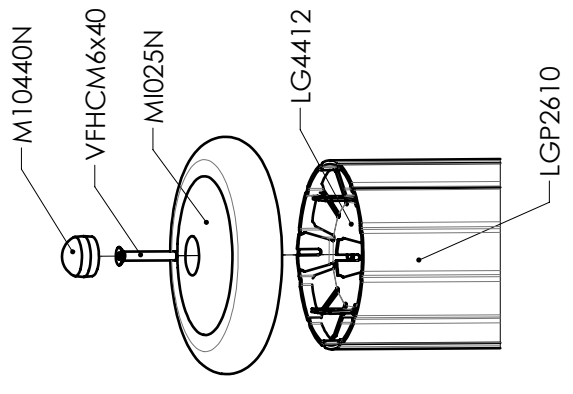
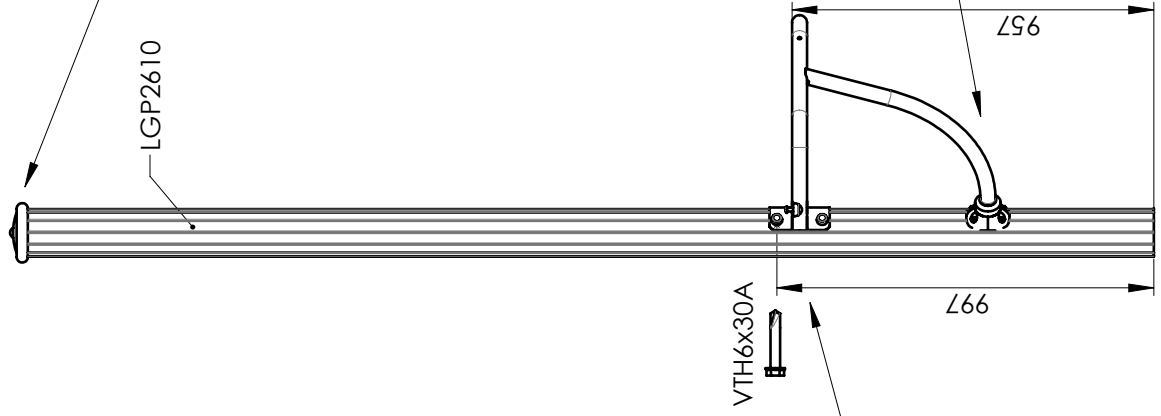
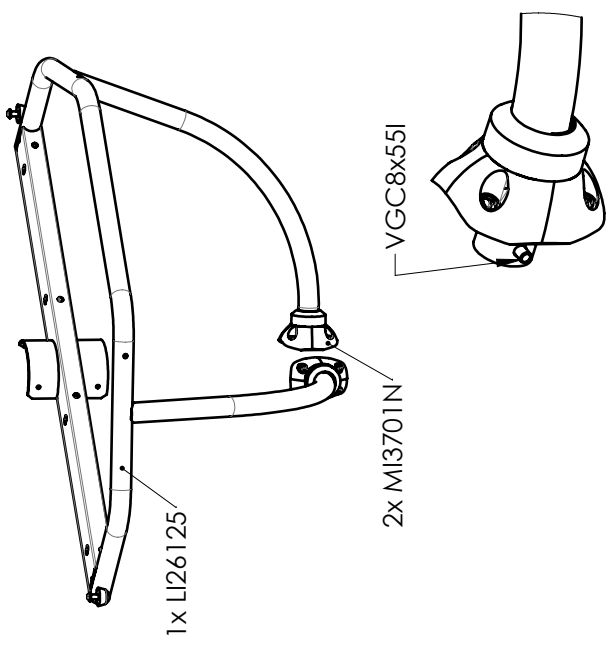


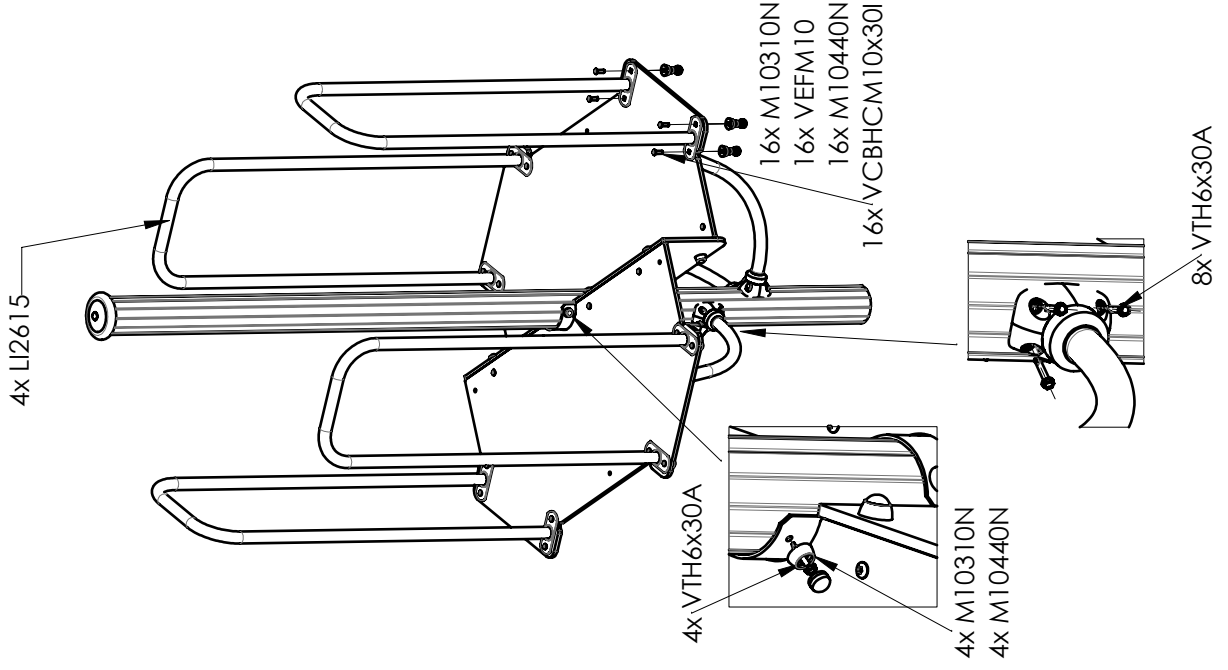
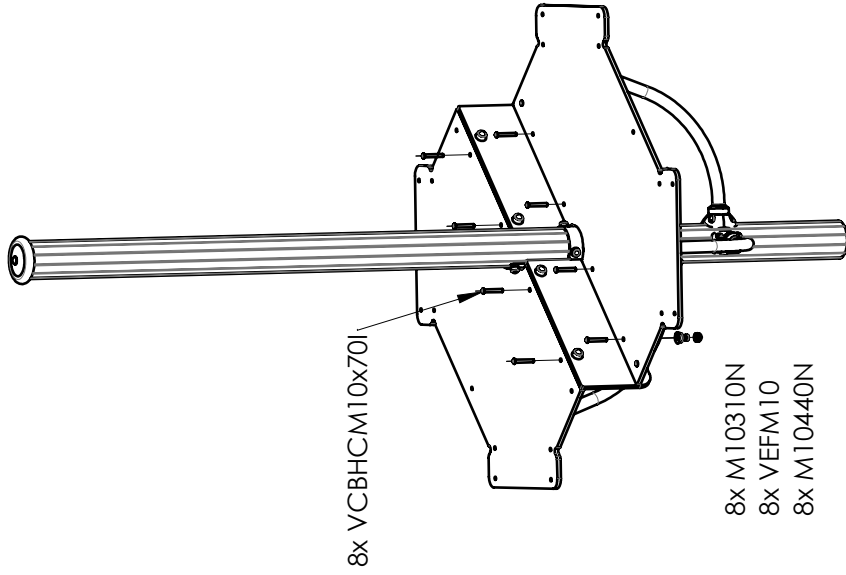
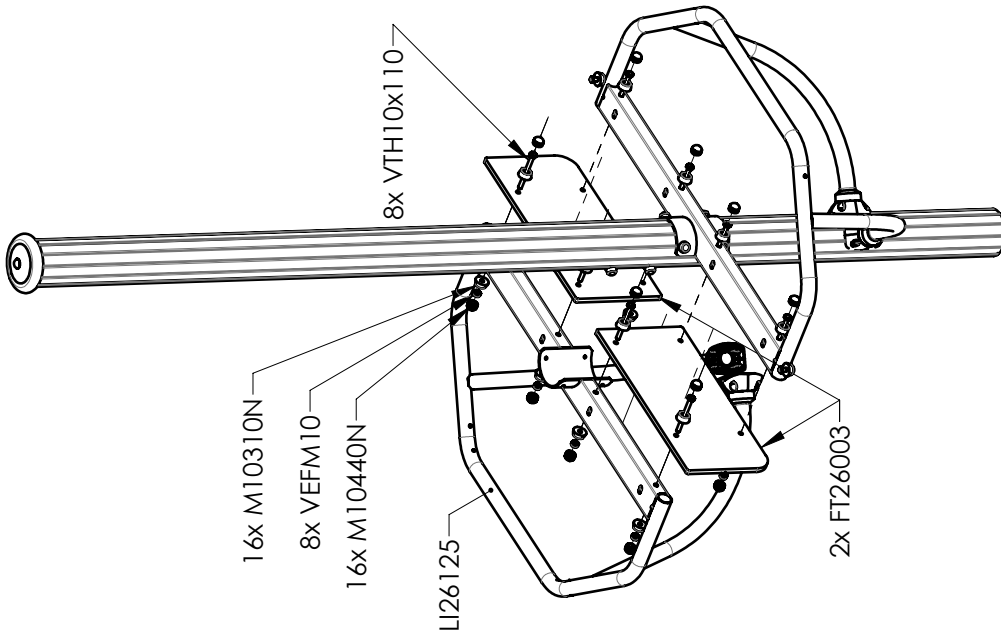
2x FT26003

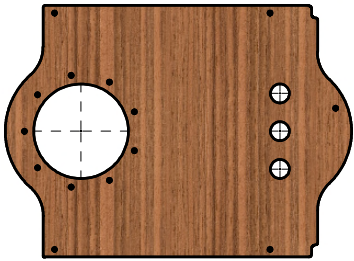
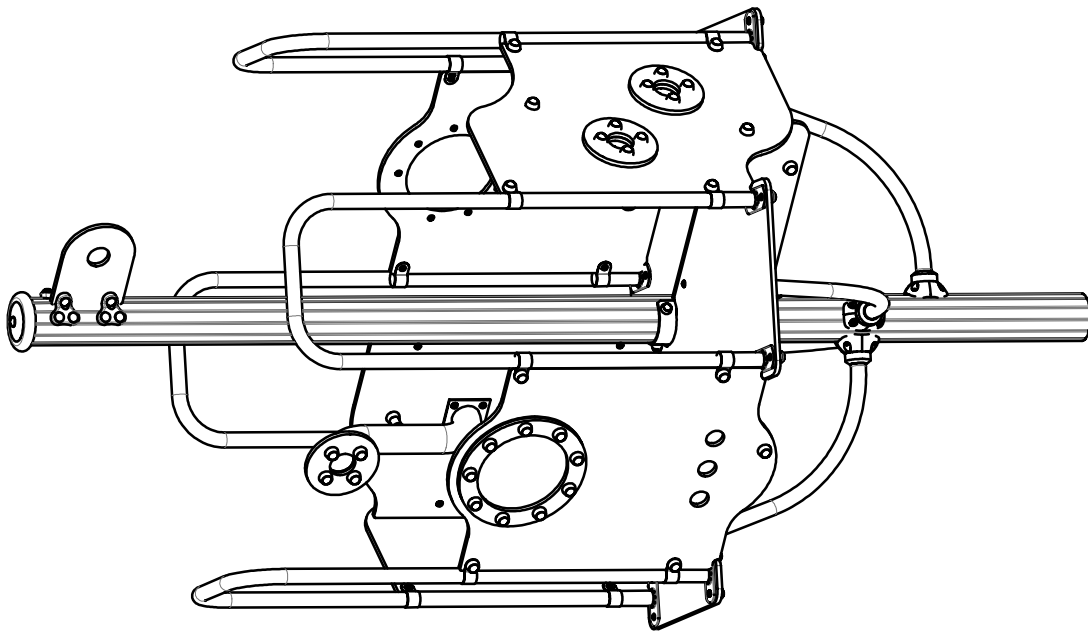


4x MI3701N

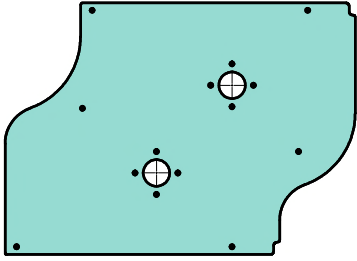
Réf	Qté
FT26002	2
FT26003	2
LG4412	1
LI2615	4
LI26125	2
M8310N	8
M8440N	8
M10310N	50
M10440N	50
M1025N	1
MI3701N	4
VCBHCMI0x30I	18
VCBHCMI0x70I	8
VEFM10	34
VFHCM6x40	1
VGC8x55I	4
VTH6x30A	24
VTH10x110	8



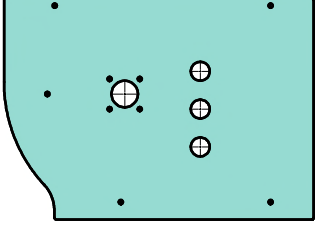




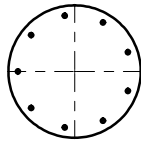
2x ET26006CH



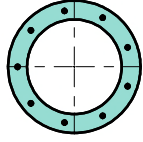
2x ET26007L



1x ET26010L



2x EM2617



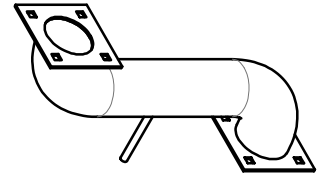
2x ET26008L



1x ET26011L



5x ET4030CH

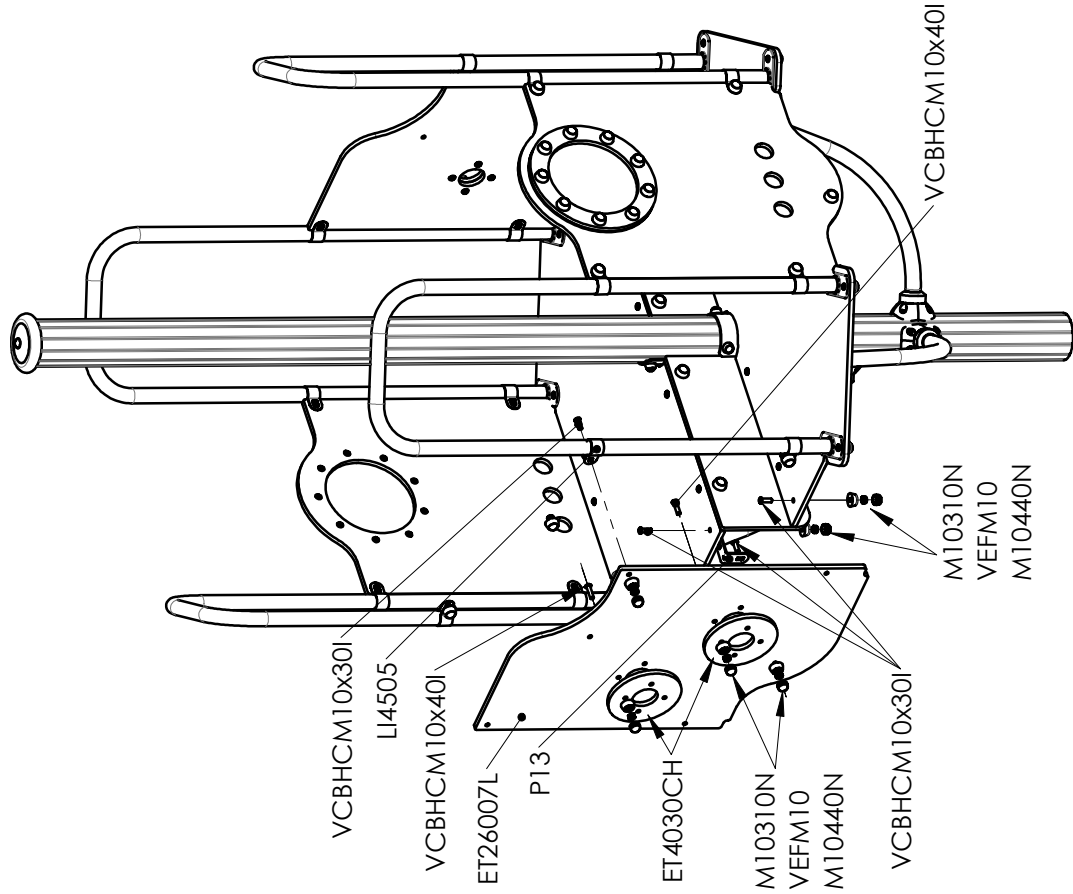
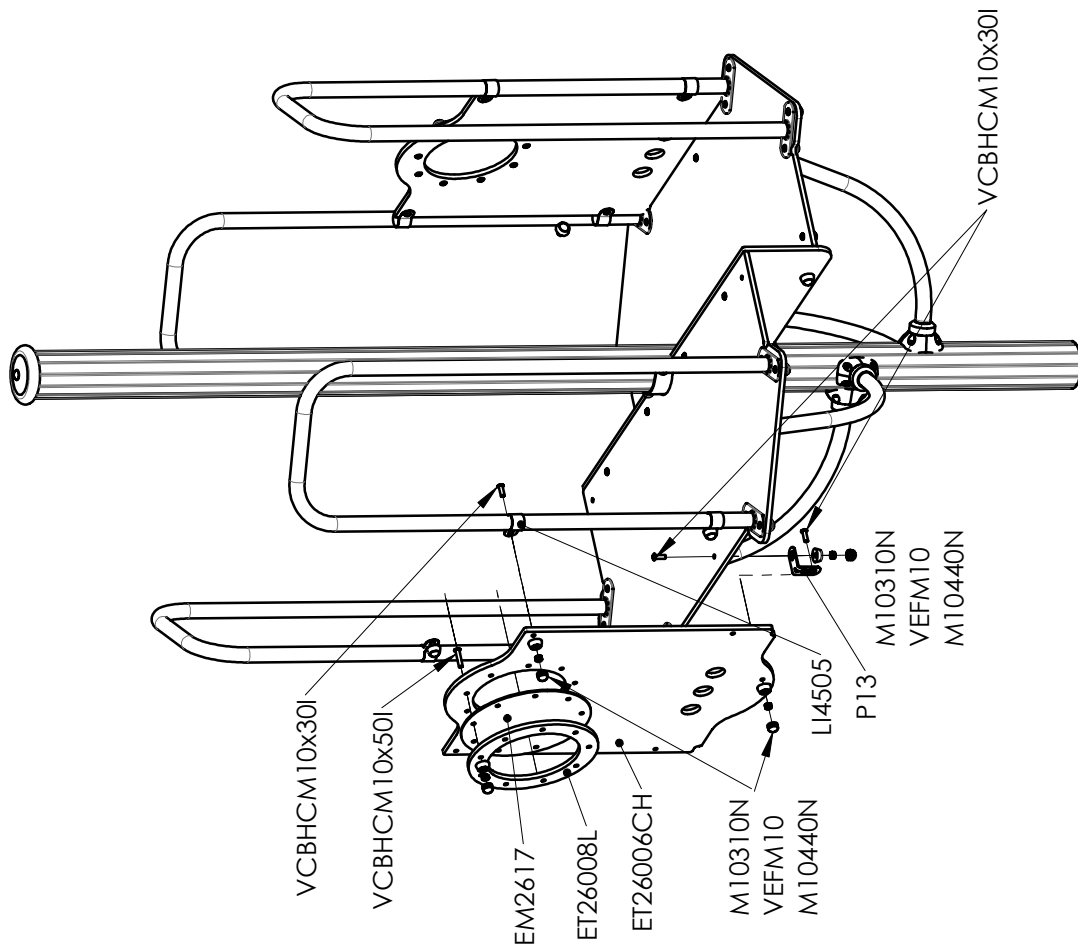


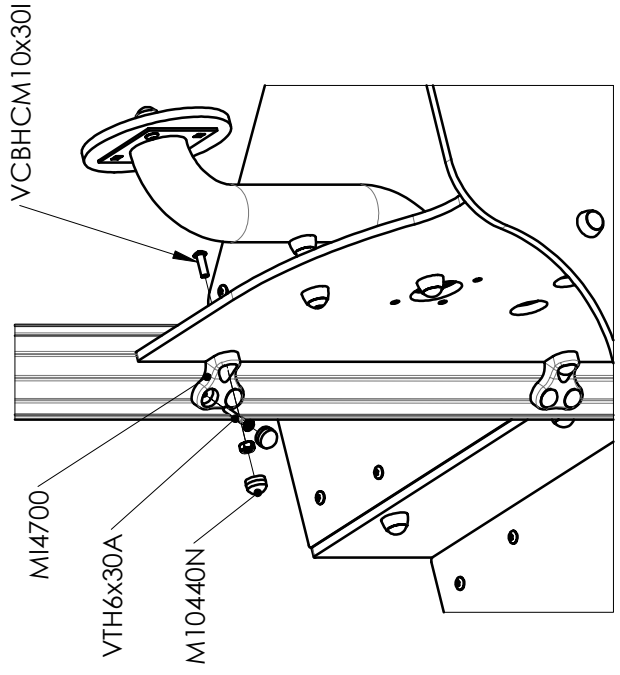
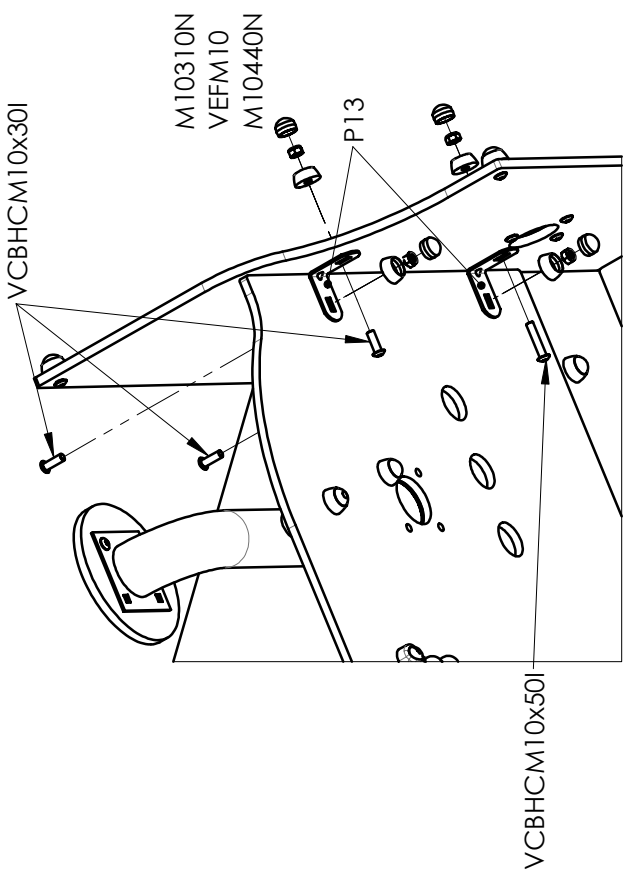
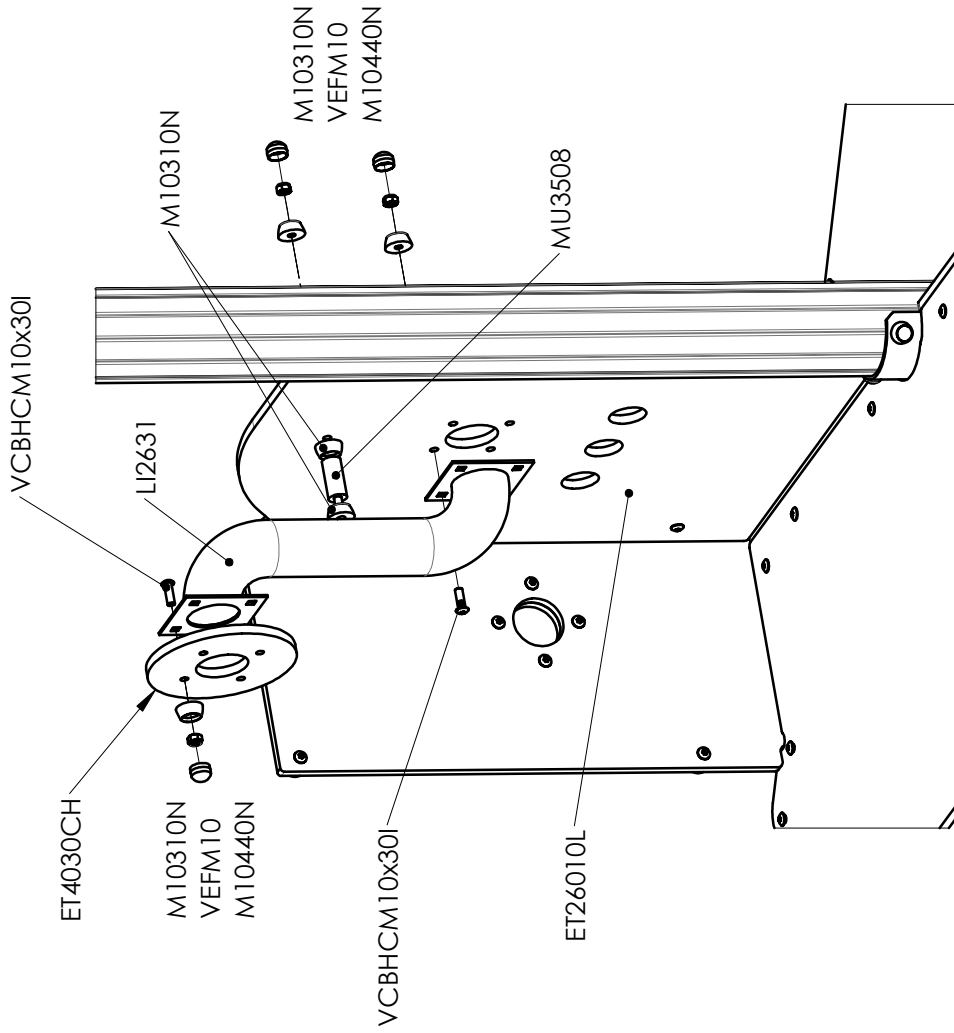
1x LI2631

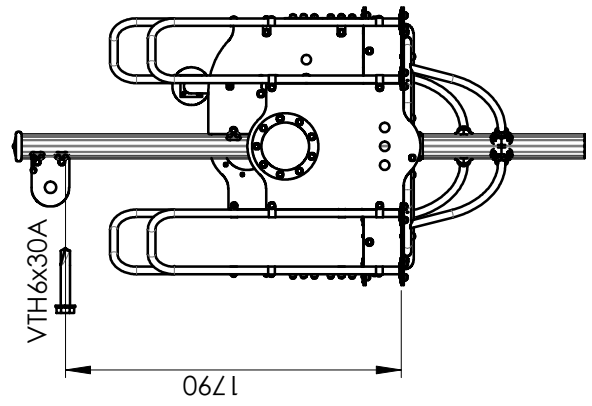
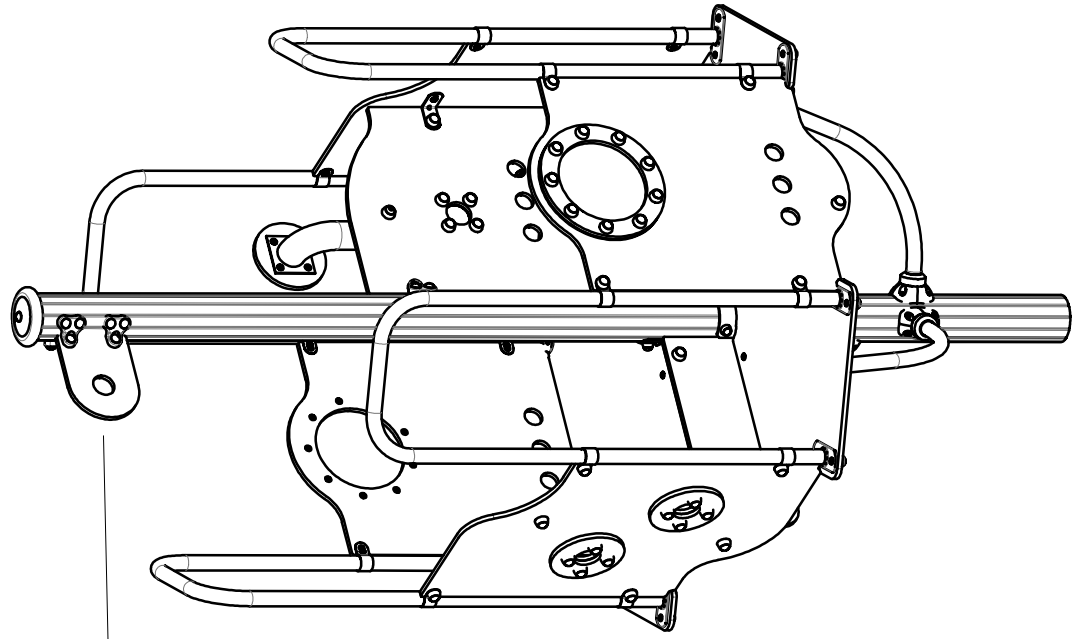
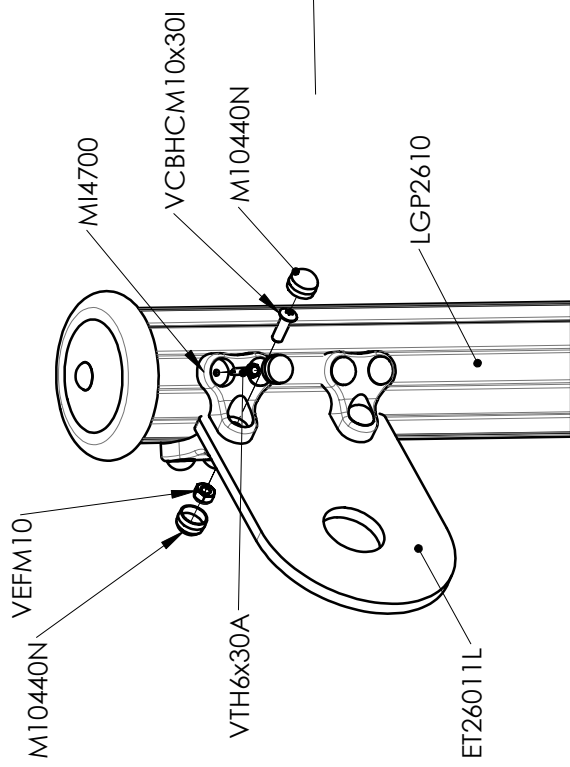


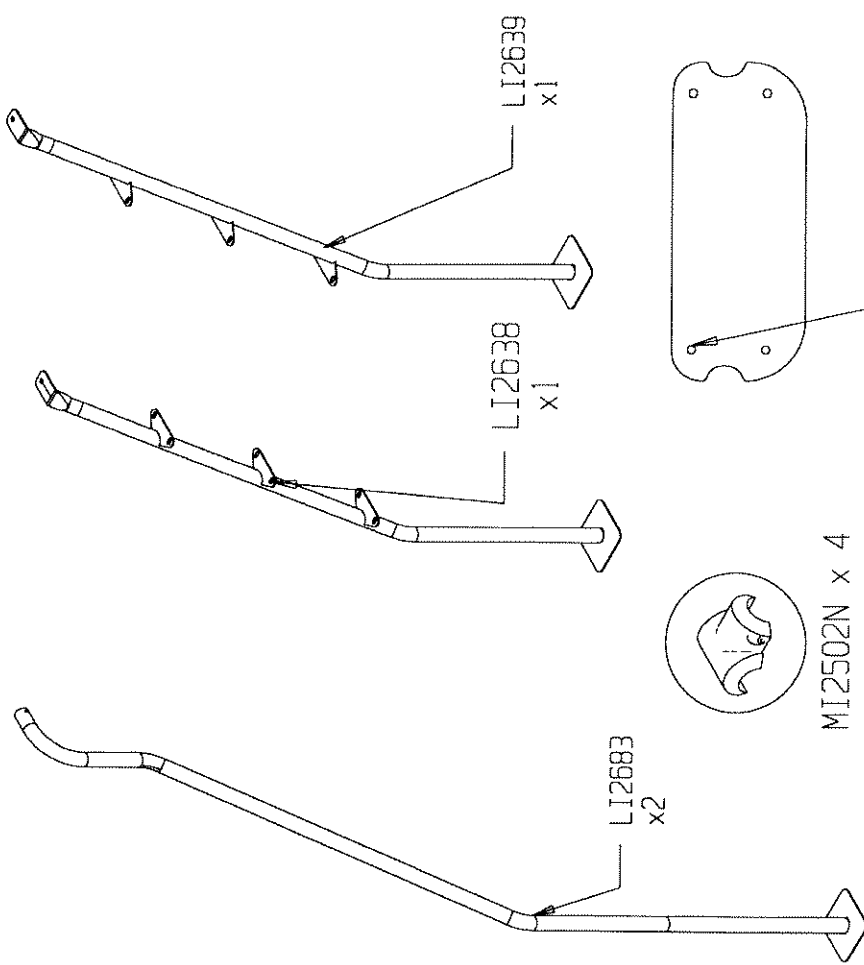
1x MU3508

Réf	Qté
EM2617	2
ET4030CH	5
ET26006CH	2
ET26007L	2
ET26008L	2
ET26010L	1
ET26011L	1
LI2631	1
LI4505	16
M10310N	78
M10440N	92
MI025N	1
MI4700	6
MU3508	1
P13	6
VCBHCMI0x30I	45
VCBHCMI0x40I	16
VCBHCMI0x50I	19
VEFM10	80
VFHCM6x40	1
VTH6x30A	32
VTH10x110	8

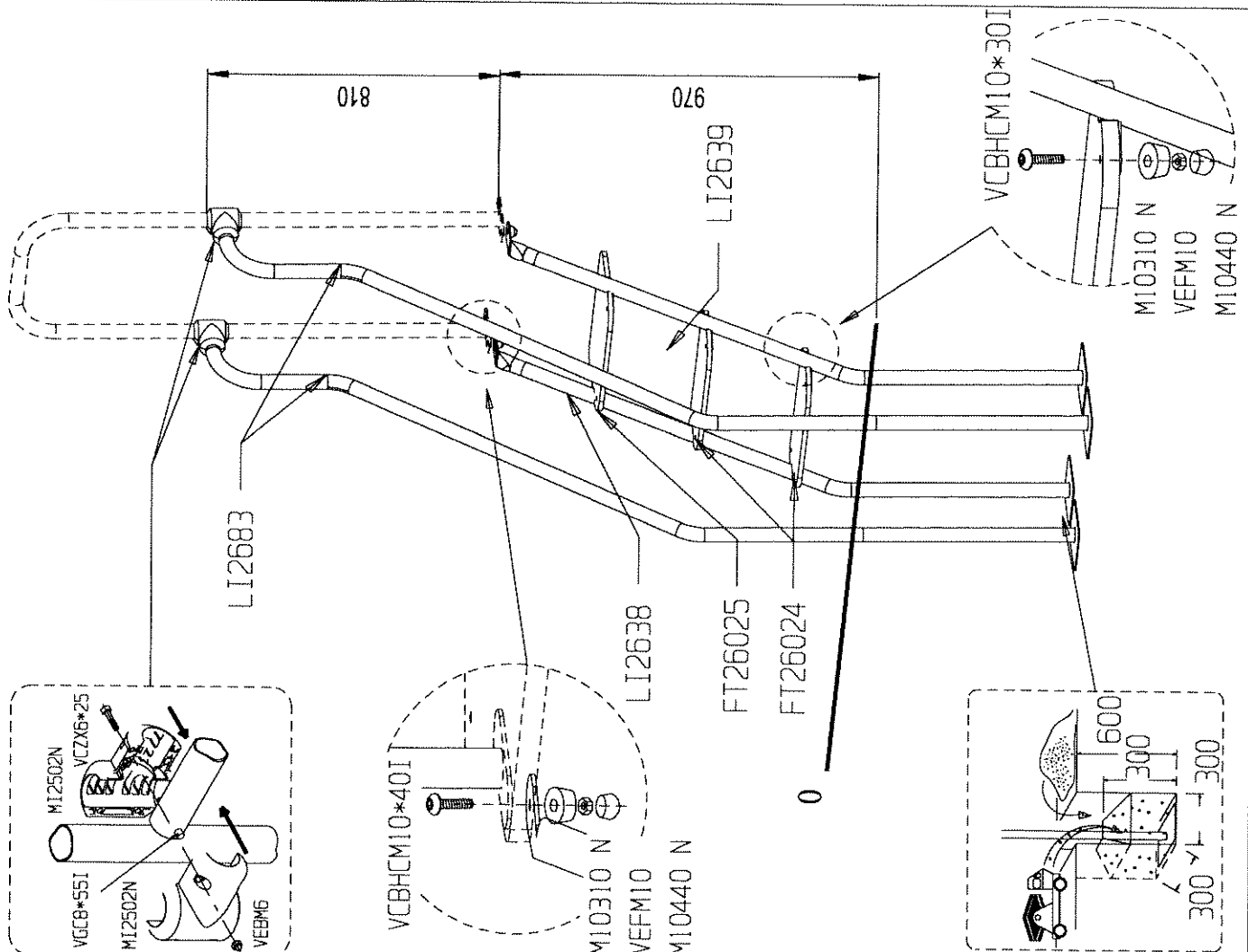


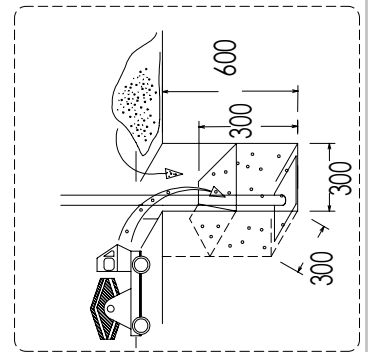
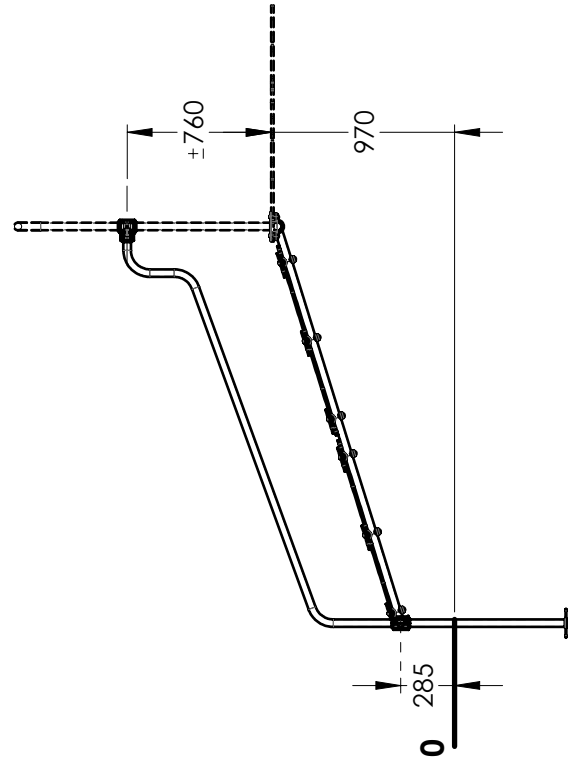
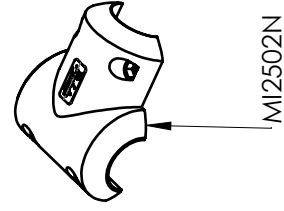
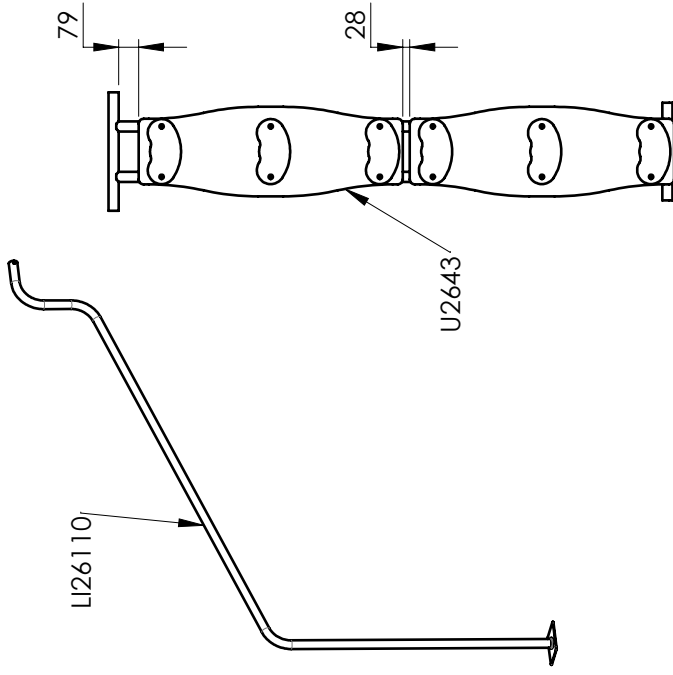
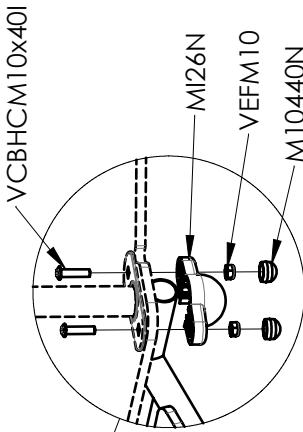
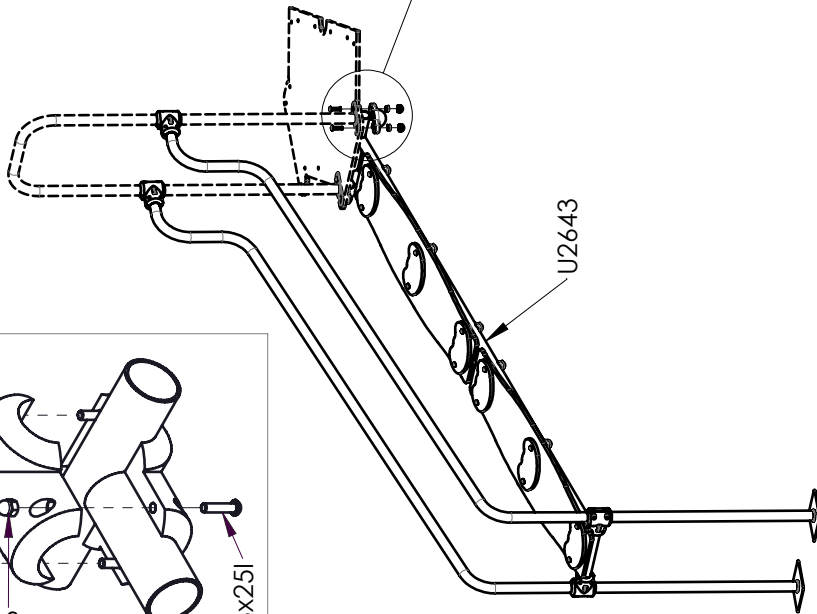
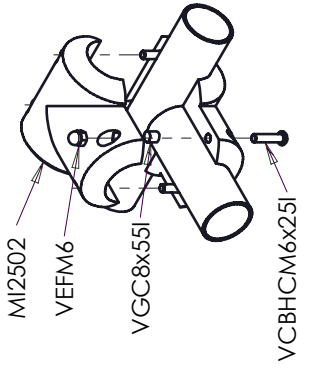
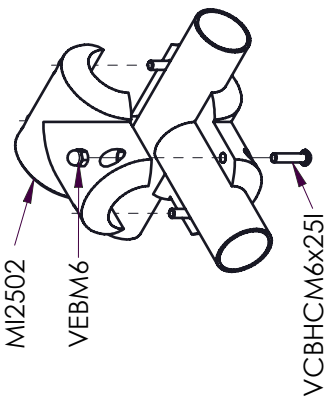




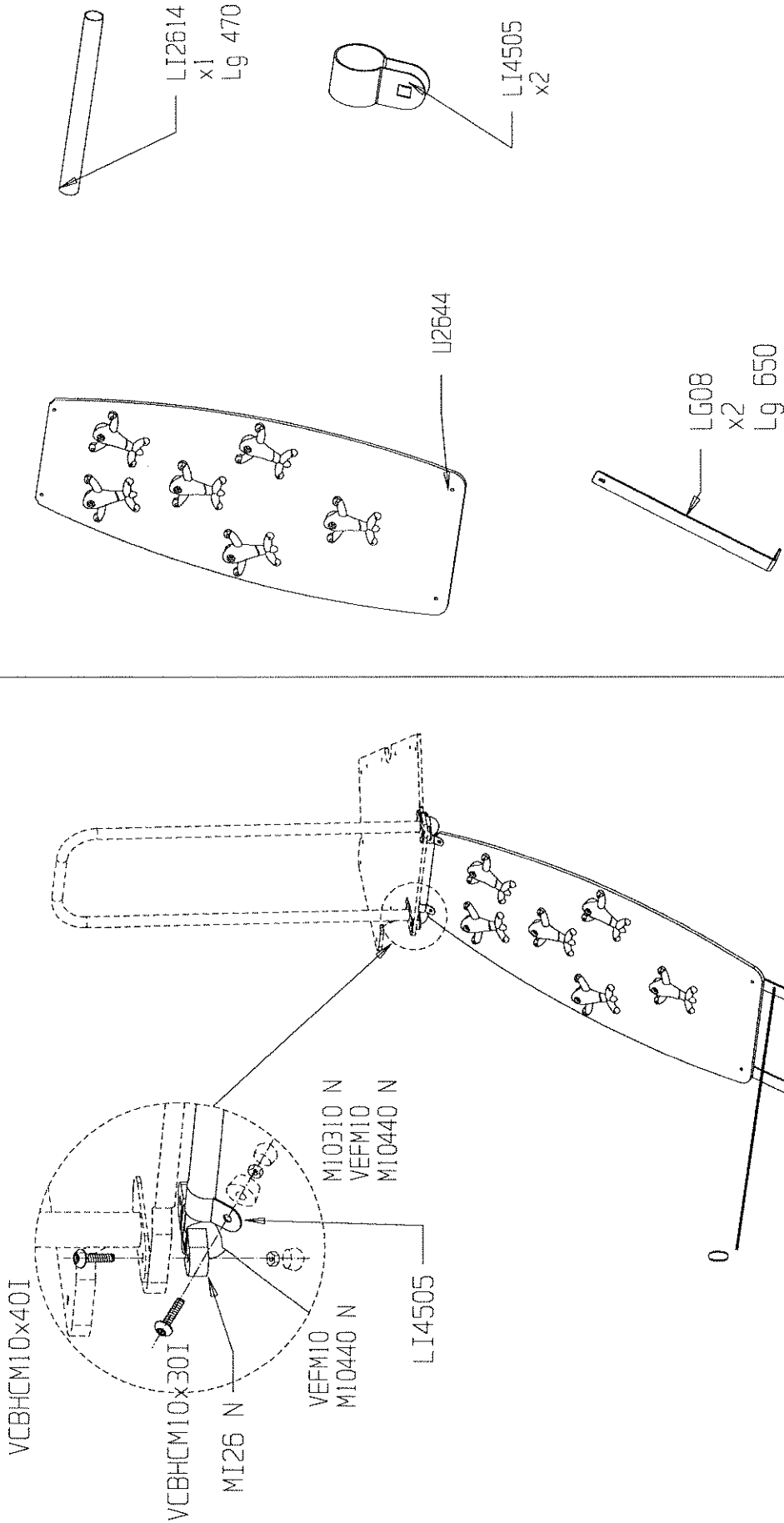


	VCBHC10*40I	2
	VGC8*55I	2
	VCBHC10*30I	12
	M10310 N	14
	M10440 N	14
	VEFM10	14
	VCZX 6x25	8
	VEBM6	8

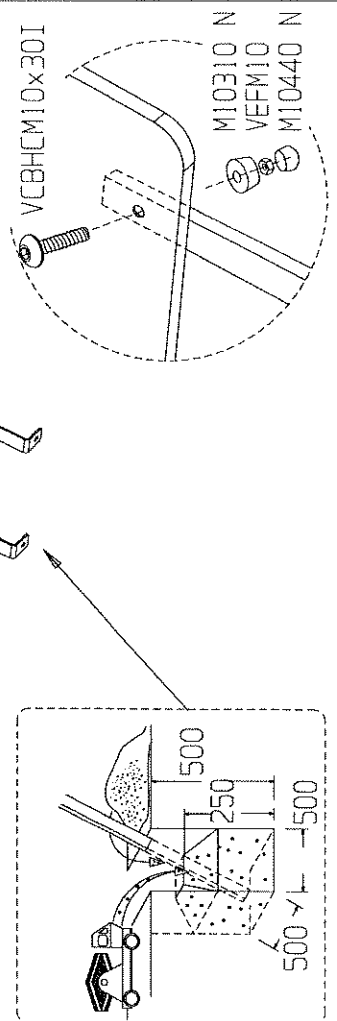


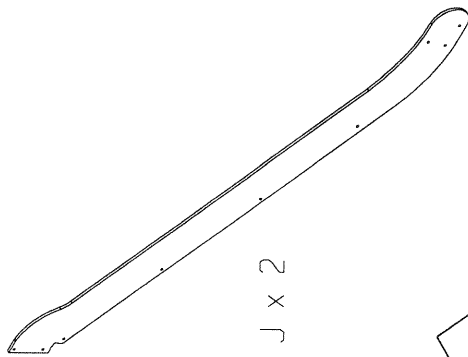


Réf	Qté
LI26110	2
M10440N	4
MI26N	2
MI2502N	8
U2643	1
VCBHCM6x25I	16
VCBHCM10x40I	4
VEBM6	16
VEFM10	4
VGC8x55I	2

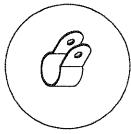


	VCBHCM10x40I	4
	VCBHCM10x30I	4
	VEFM10	8
	M10310 N	4
	M10440 N	8
	MI26N	2





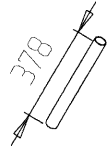
ET 2671 J x 2



LI4505 x 4



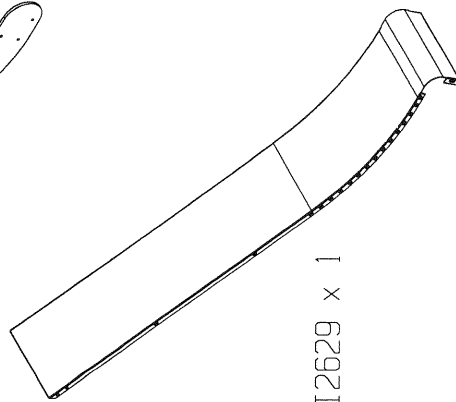
MI2502N x 4



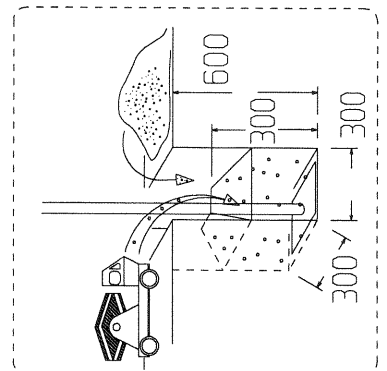
LI3838 x 1



LG08 X2



LI2629 x 1



	VCZX 6x25	8
	VEBM 6	8
	VEFM10	20
	M10310N	22
	M10440N	22
	VTRCC10x40	2
	VCBHC10*30I	18

LI2629

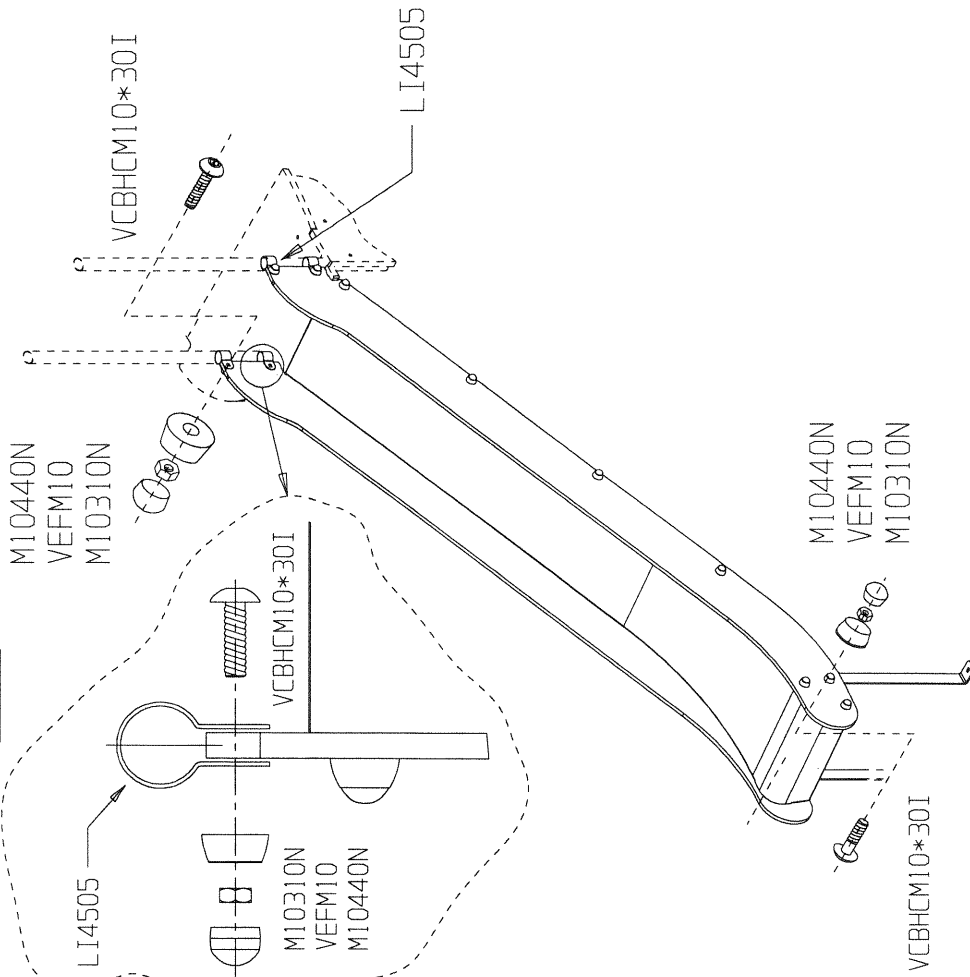
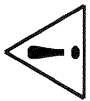
ET2671J

ET2671J

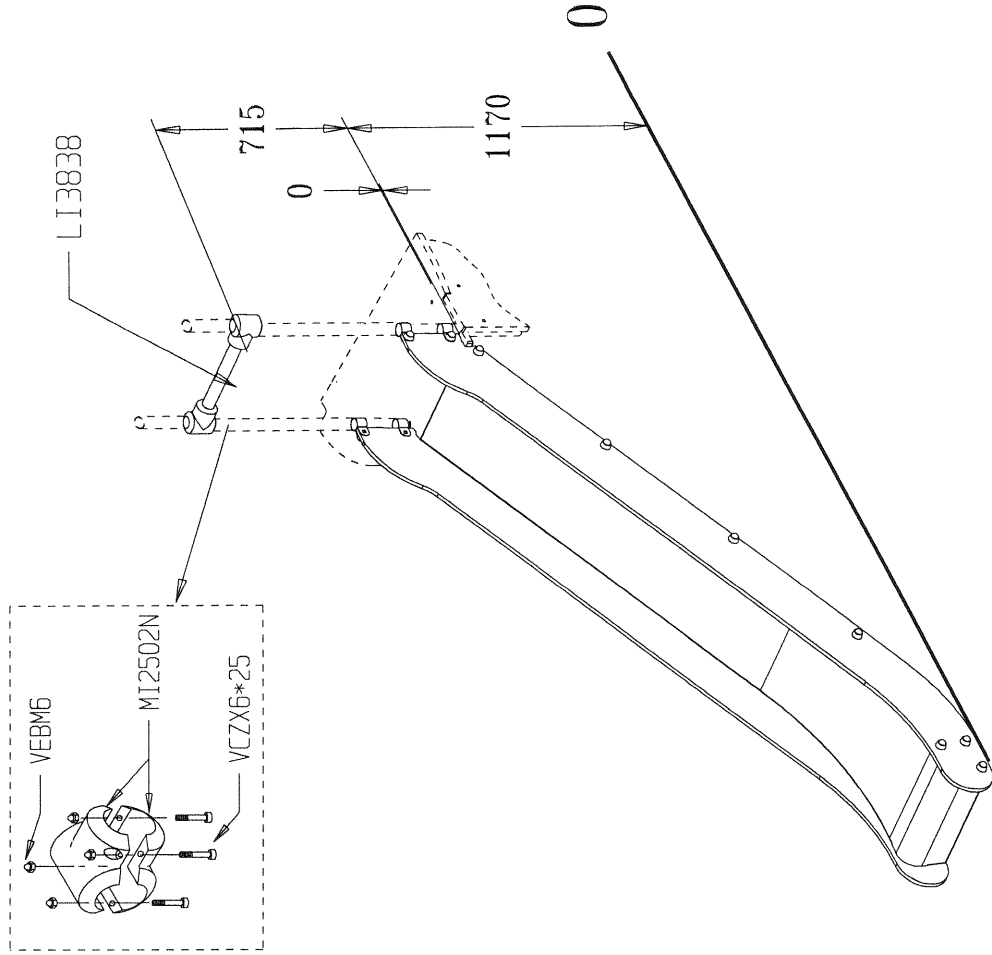
M10440N
VEFM10
M10310N

VCBHC10*30I

1



2



3