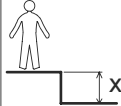
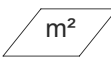




2 → 10

*ProLudic*

N°		
1	0.6 m	15 m <sup>2</sup>
2	1 m	8 m <sup>2</sup>

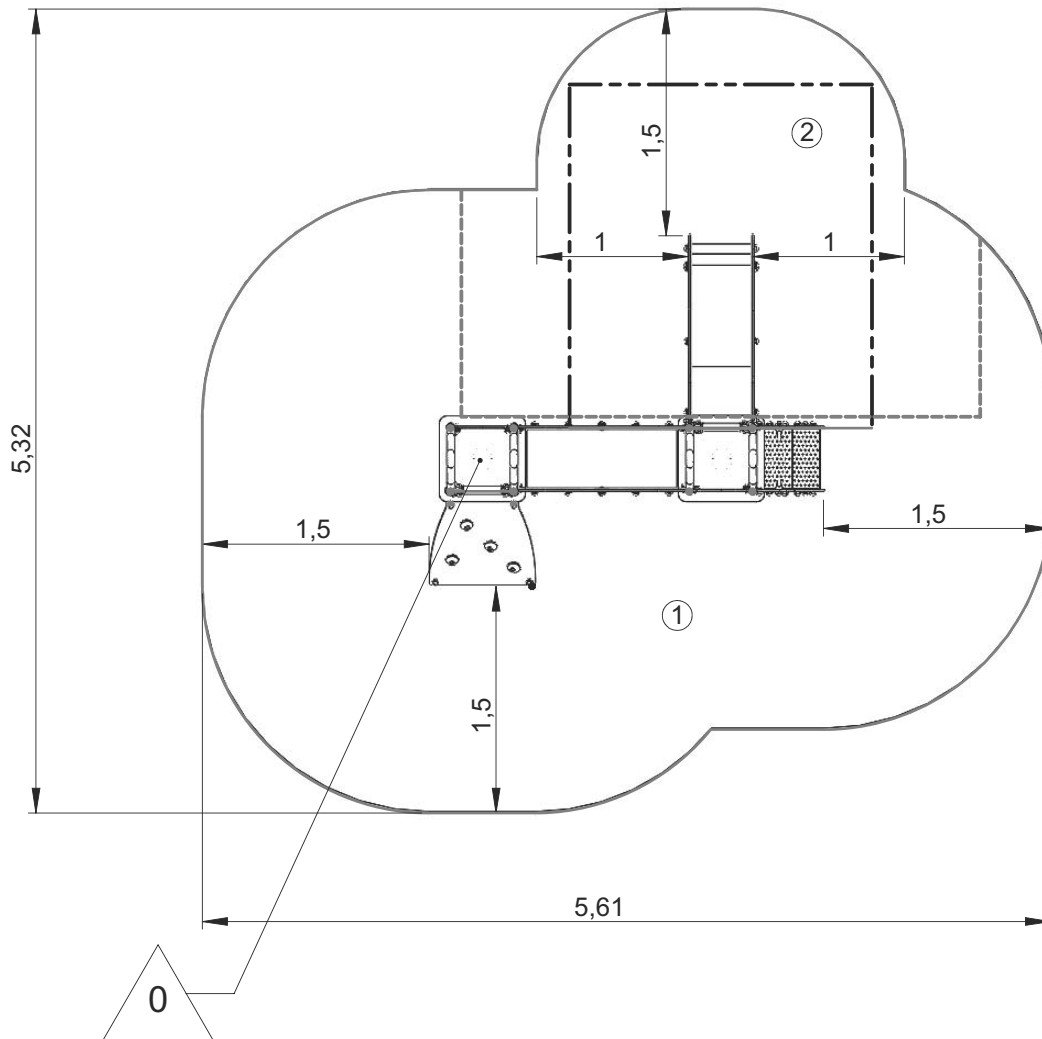
— Zone d'impact  
Impact area  
Area de impacto  
Fallraum  
Valzone

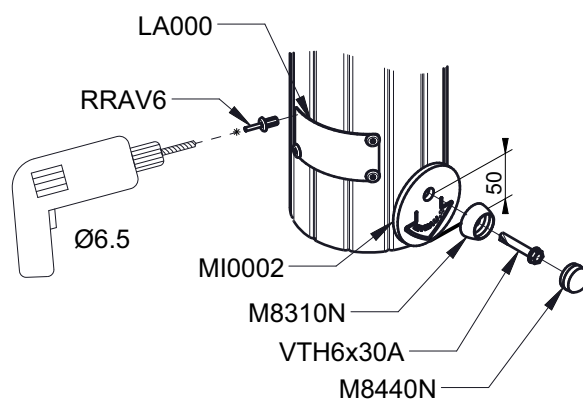
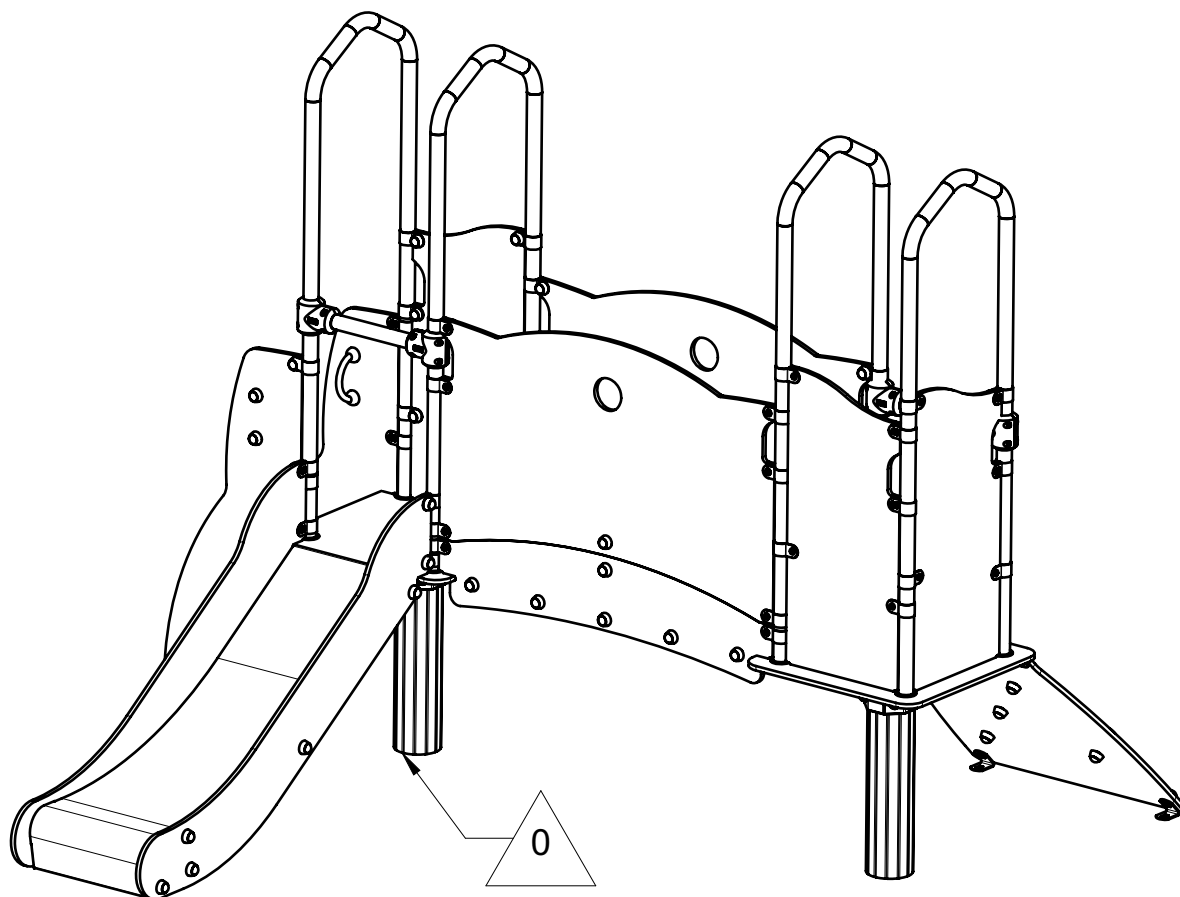


Point de référence  
Setting out point  
Punto de referencia  
Bezugspunkt  
Referentiepunt

- - - Espace libre  
Free space  
Espacio libre  
Freiraum  
Vrije ruimte

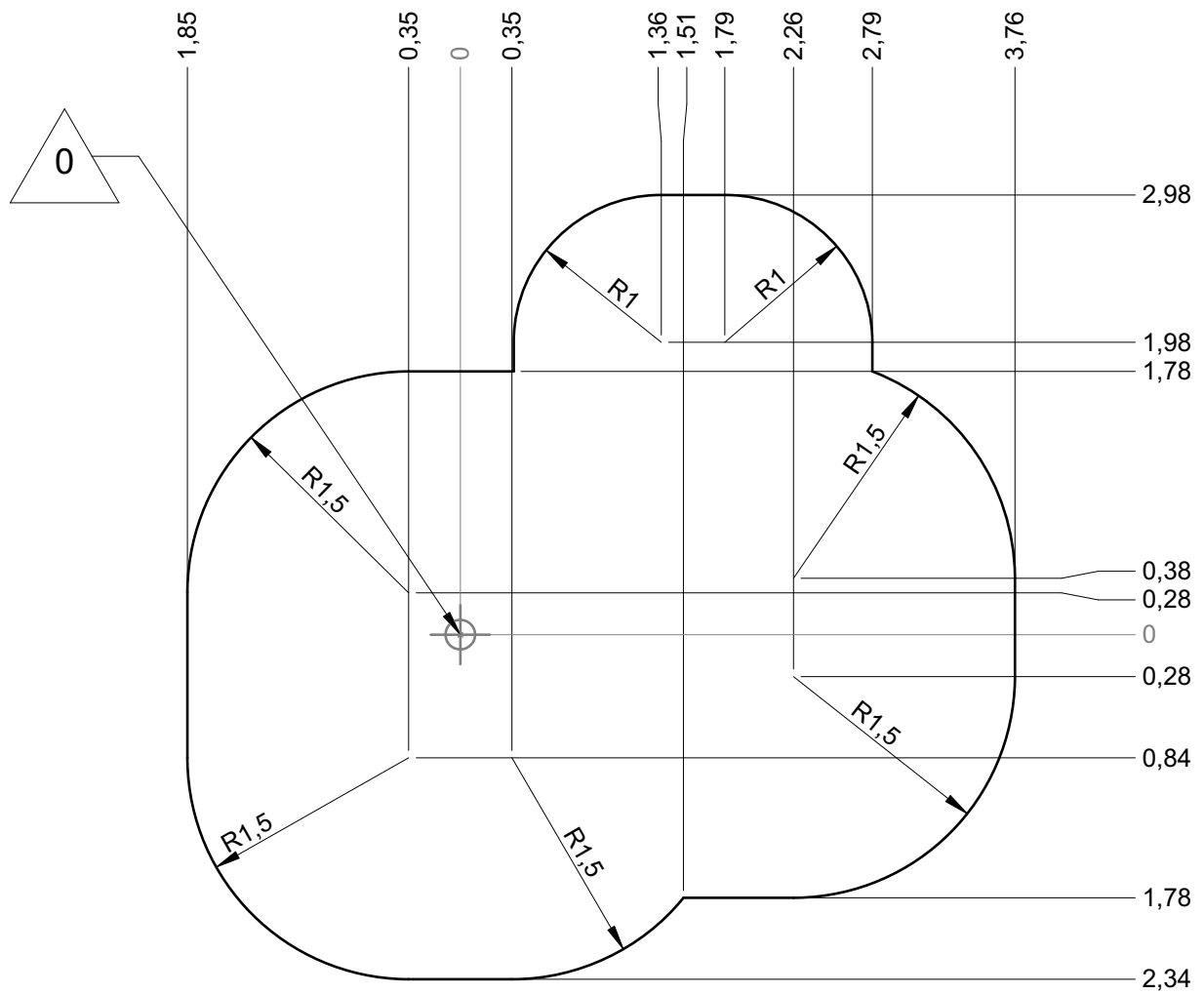
EN1176-1:2017  
EN1176-3:2017





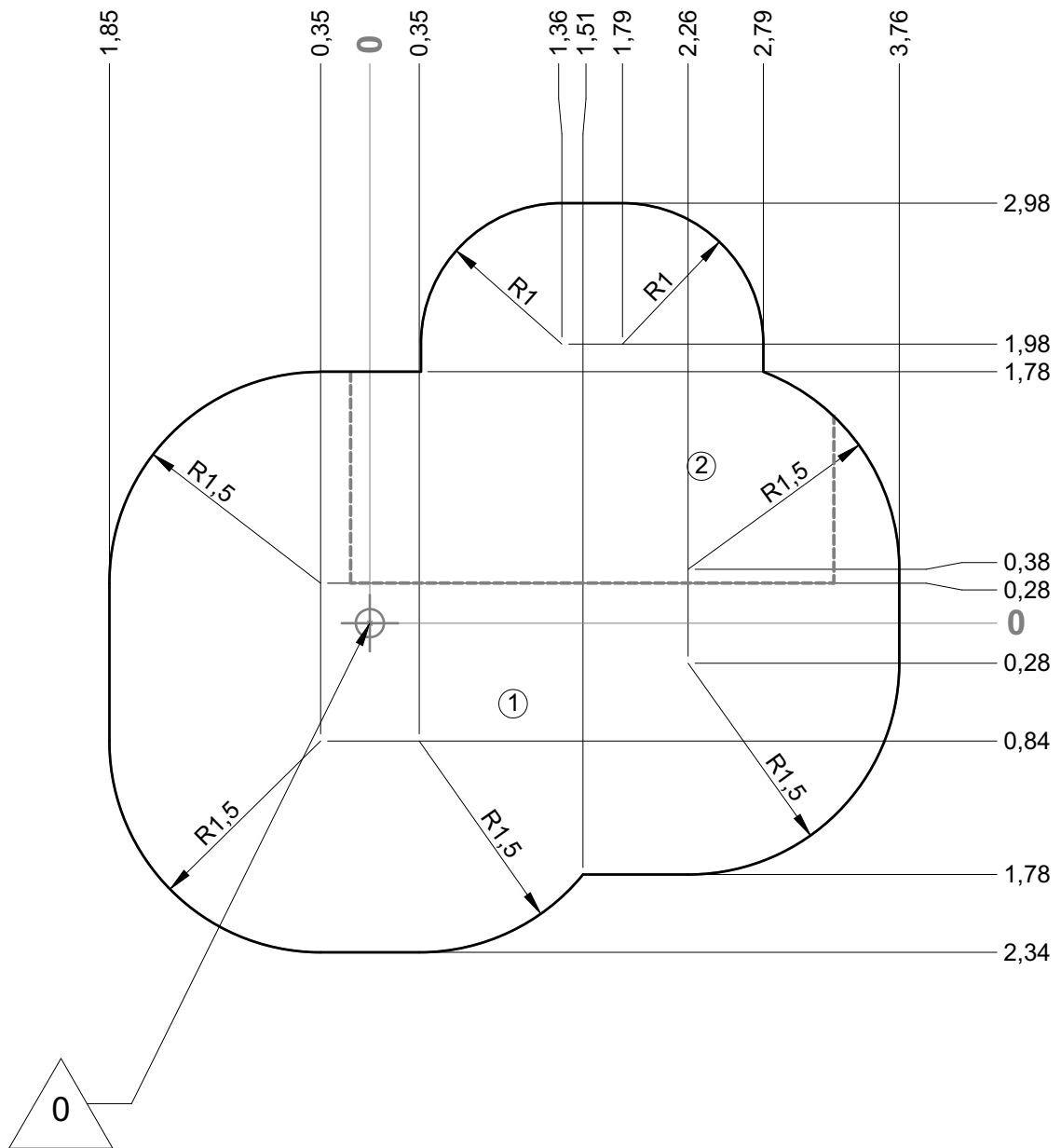
— Zone d'impact  
 Impact area  
 Area de impacto  
 Fallraum  
 Valzone

23 m<sup>2</sup>



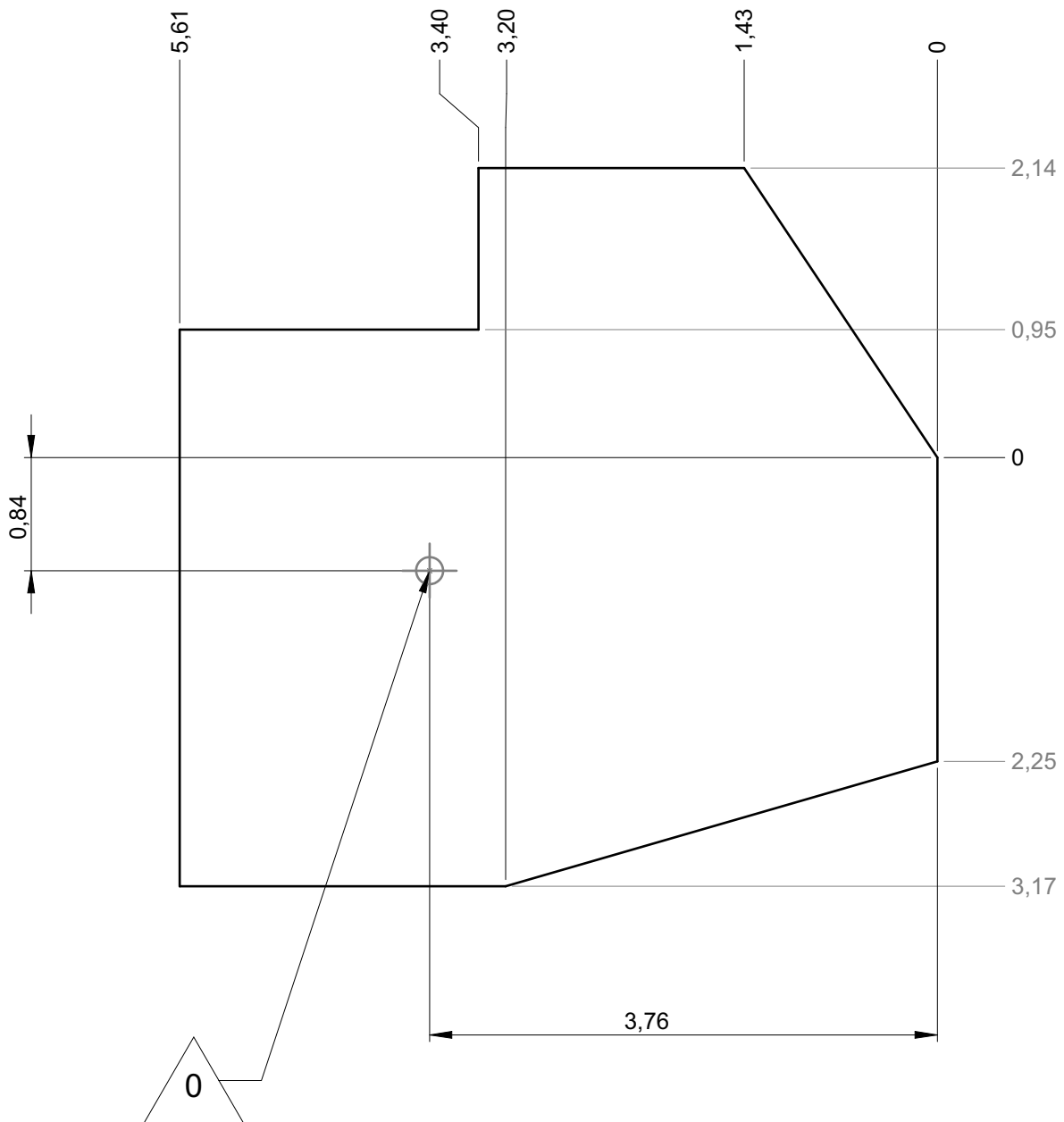
— Sol souple  
 Wetpour  
 Caucho continuo  
 Synthetischer fallschutz  
 Gietvloer

23 m<sup>2</sup>

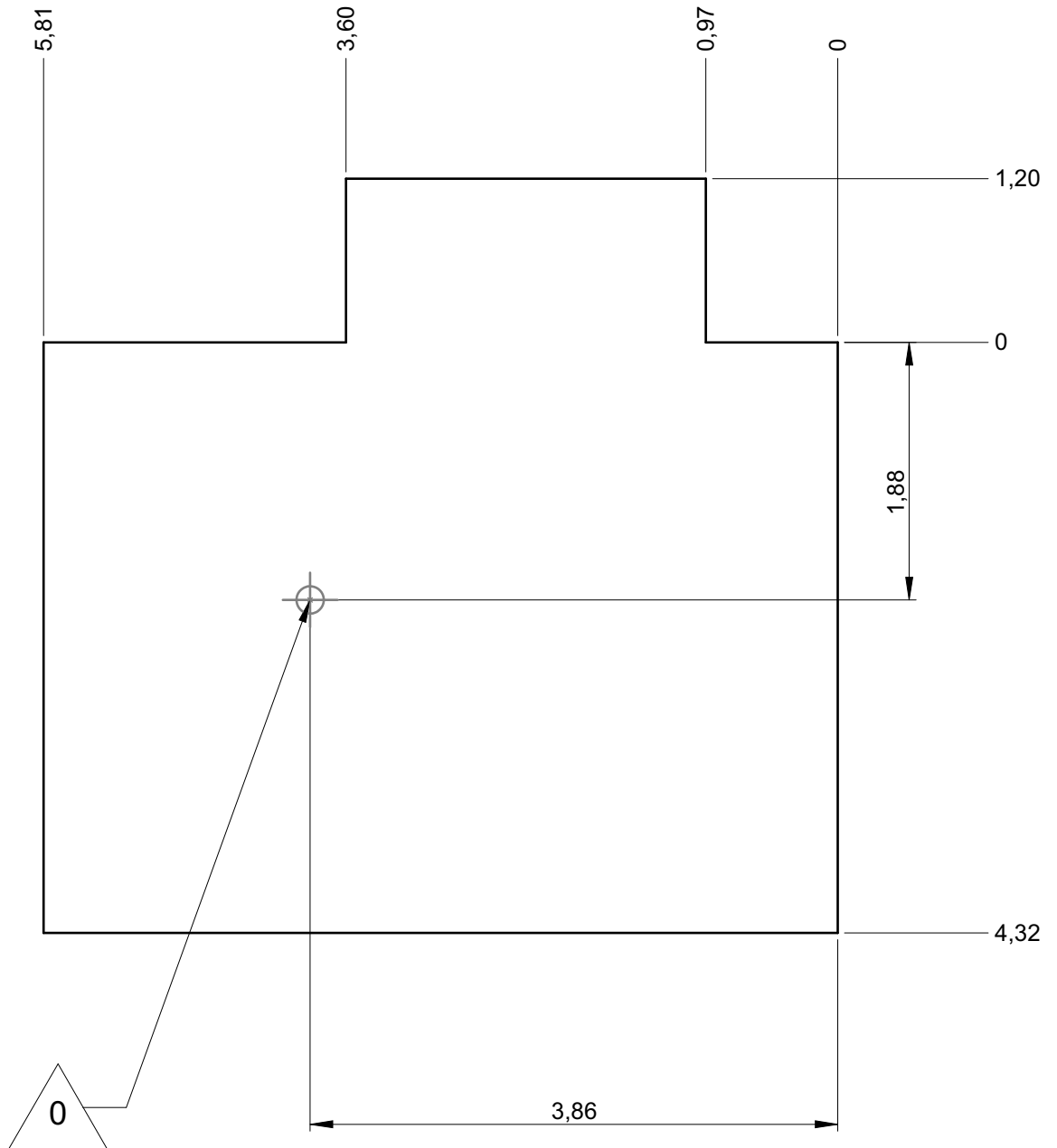


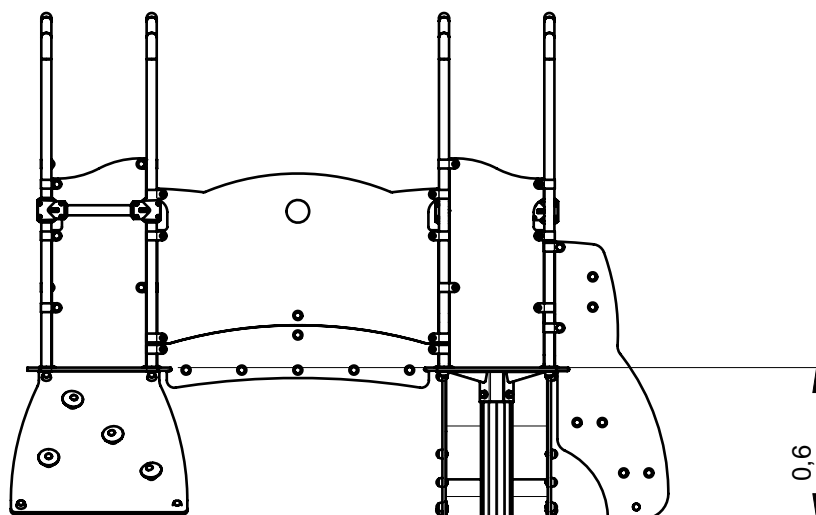
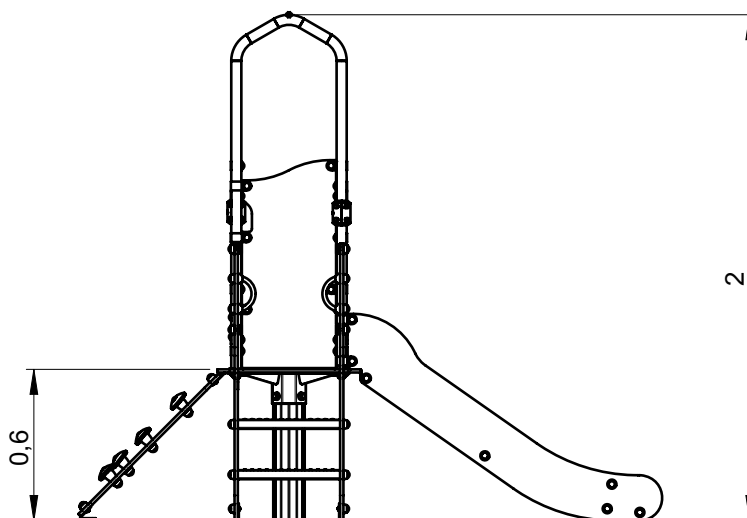
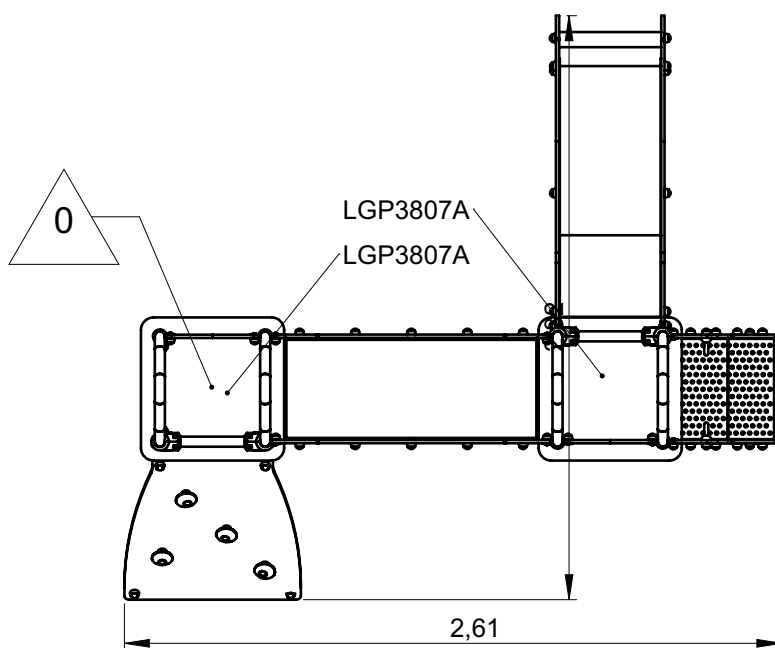
— Dalle béton  
 Concrete pad  
 Solera de hormigon  
 Beton bodenplatte  
 Betonnen bodemplaat

20 m  
 25 m<sup>2</sup>



— Sol fluent  
 Loos partucule material 23 m  
 Arenero  
 Loses Bodenmaterial 29 m<sup>2</sup>  
 Los bodemmaterialaai



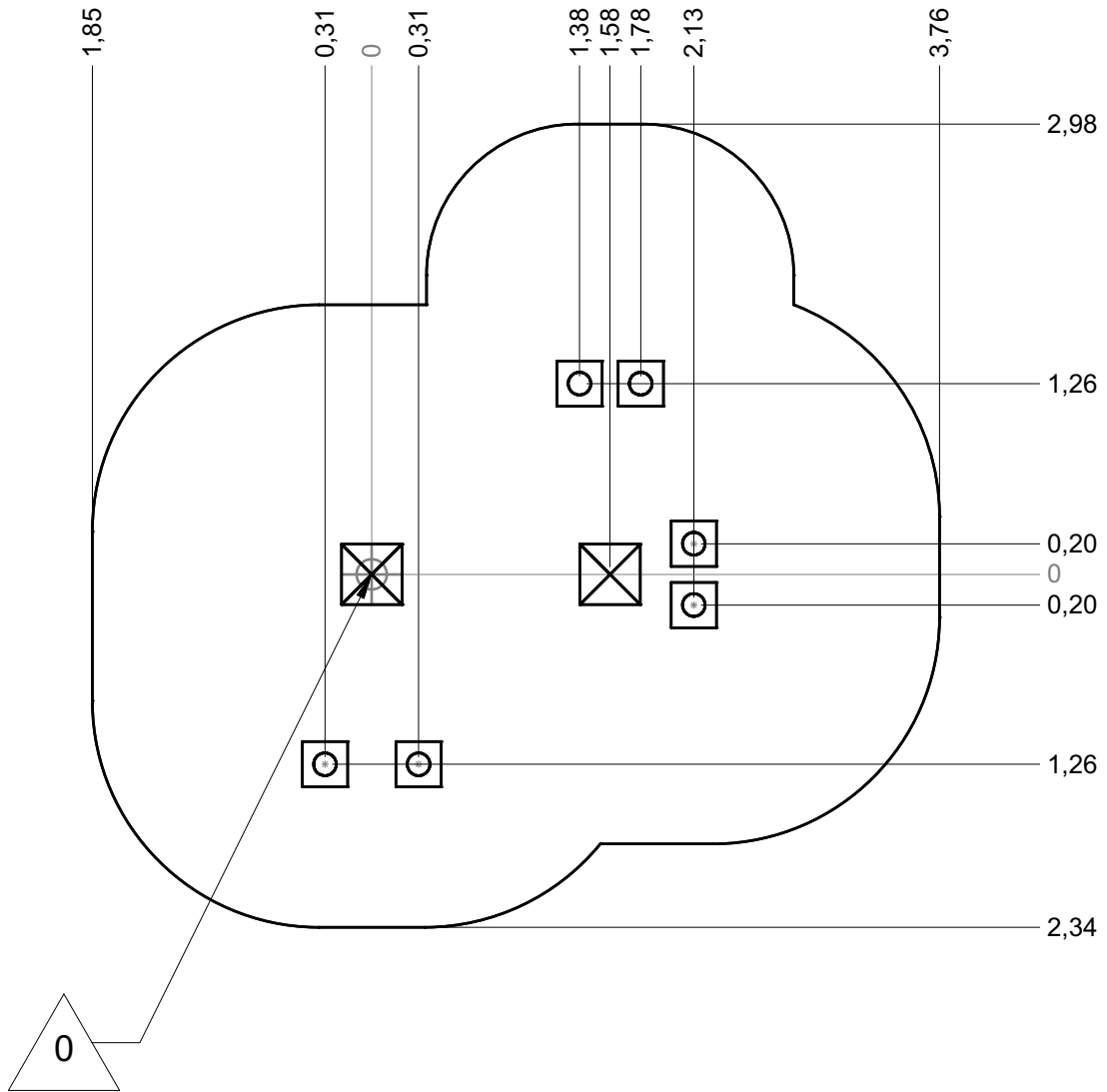






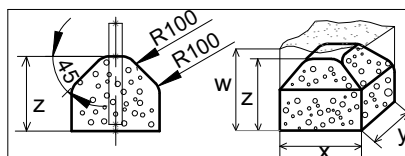
# J3850A




*Proludic*

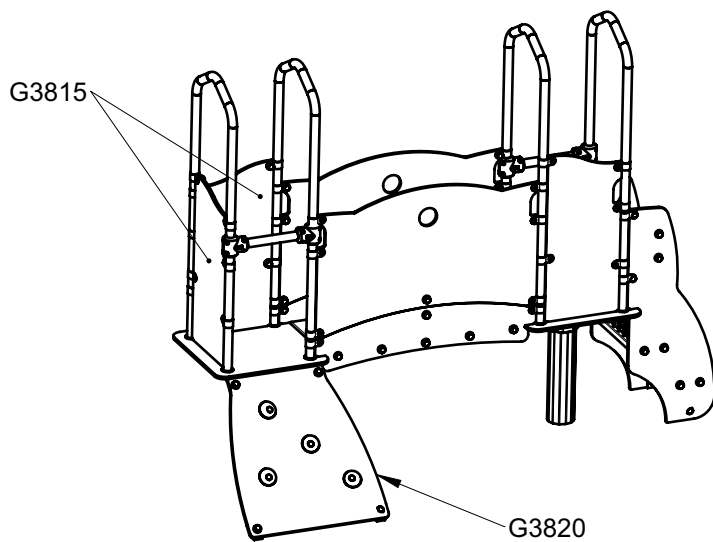
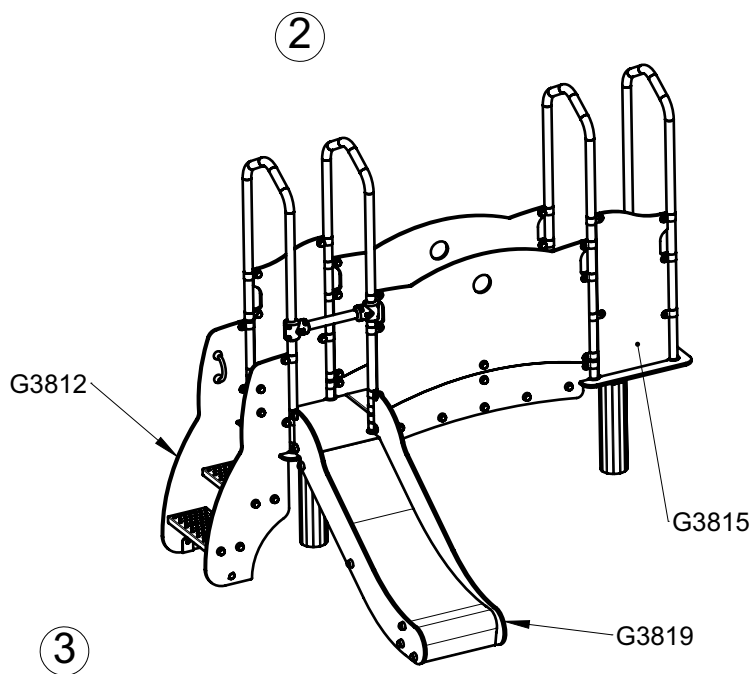
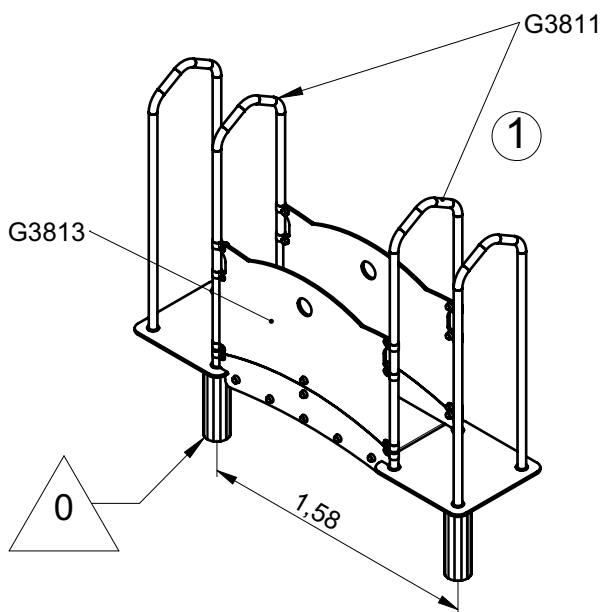
Implantation  
 Footing plan  
 Implantación  
 Fundamentplan  
 Funderingstekening

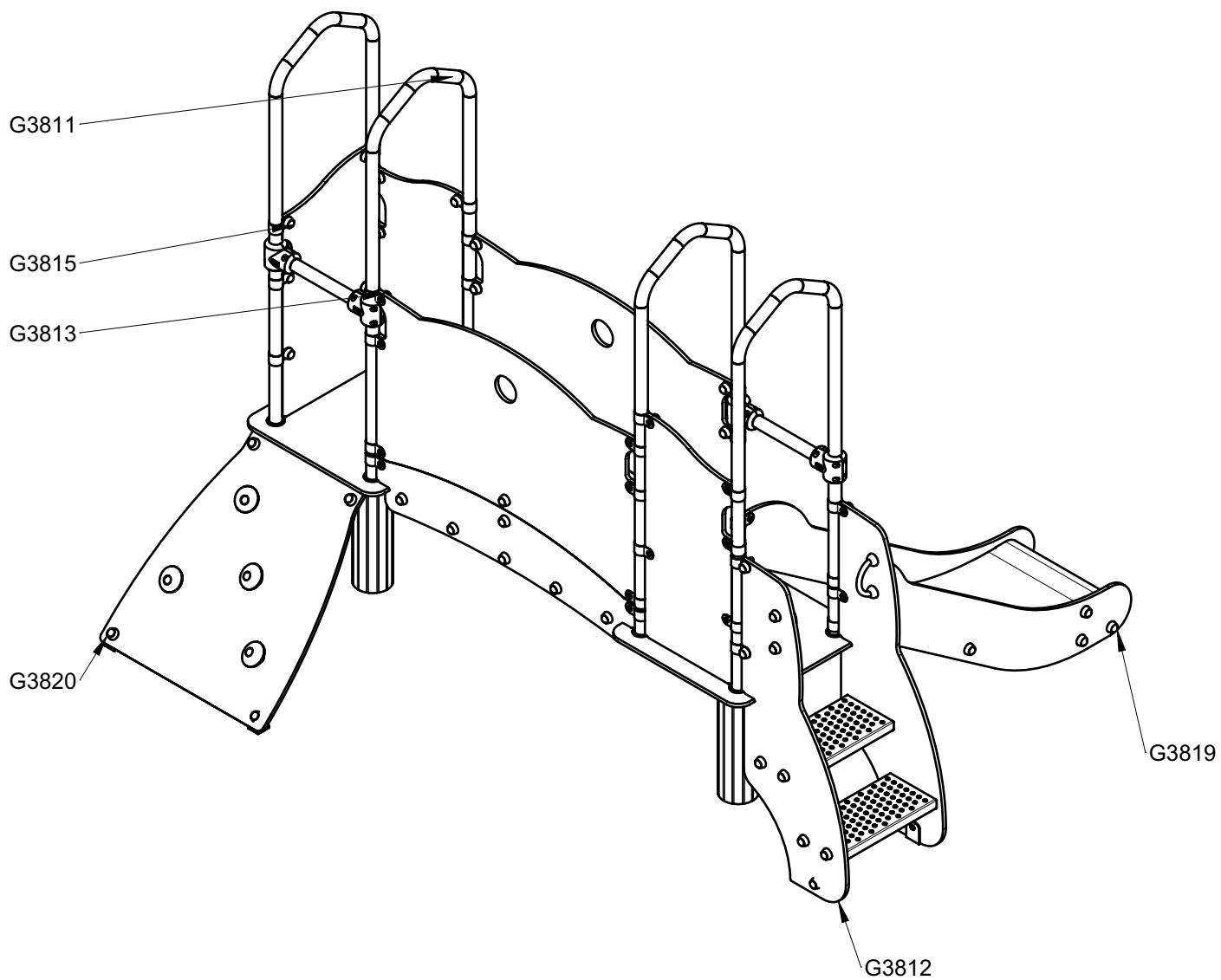


 x2  
 8H  
 0.15 m<sup>3</sup>

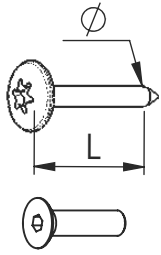


	x	y	z	w
	0.3	0.3	0.3	0.6
	0.4	0.4	0.3	0.6
	0.6	0.3	0.3	0.6



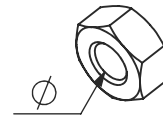


Réf	Qté
G3812	1
G3820	1
G3815	3
G3819	1
G3813	1
G3811	2

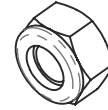


VBT 6 x 30  
 $\varnothing$   $\uparrow$  L (mm)

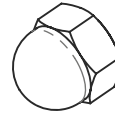
VFHC



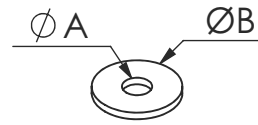
VEC M10  
 $\varnothing$




VEF




VEB



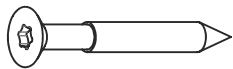
VR6x18  
 $\varnothing A$   $\varnothing B$



**1000 - 1800 tr/min**  
 Vitesse de rotation  
 Rotation speed



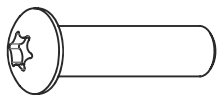
**14 N.m**  
 Couple de rupture  
 Torque of break



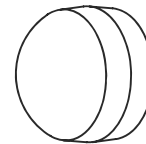
VWT



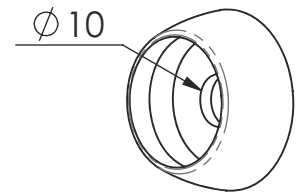
VGC



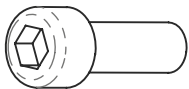
VCBHC



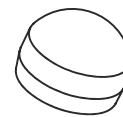
M10 440N



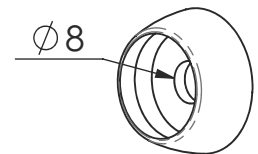
M10 310 N



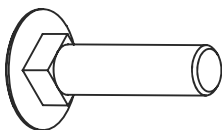
VBTR



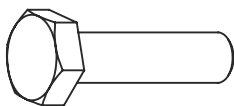
M8440N



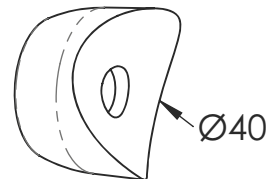
M8310N



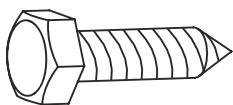
VTRCC



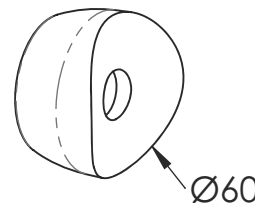
VTH



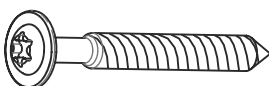
MI2503



VTF



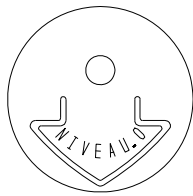
MI2701



VBT

# A

*Proludic*



MI0002

VCBHCM10

M10310N  
VEFM10  
M10440N

LG08

M10440N  
VEFM10  
MI2503

LG3802

M10440N  
VTH10\*80  
MI2503

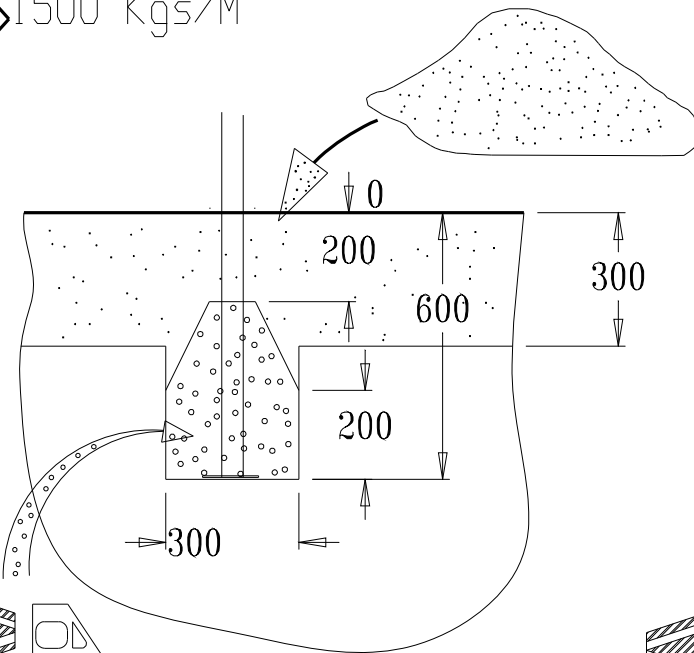
LG3804



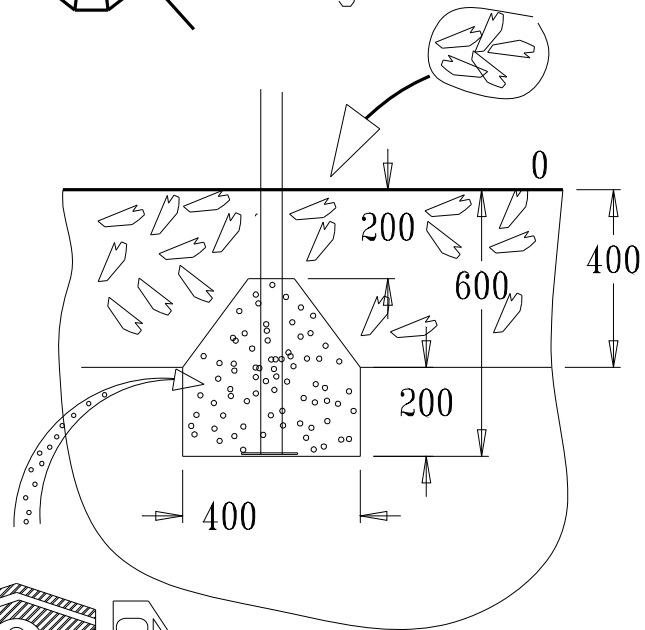
> 1500 Kgs/M<sup>3</sup>



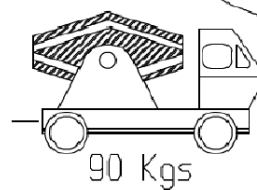
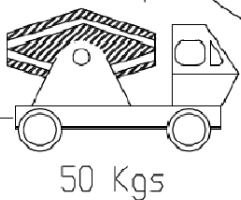
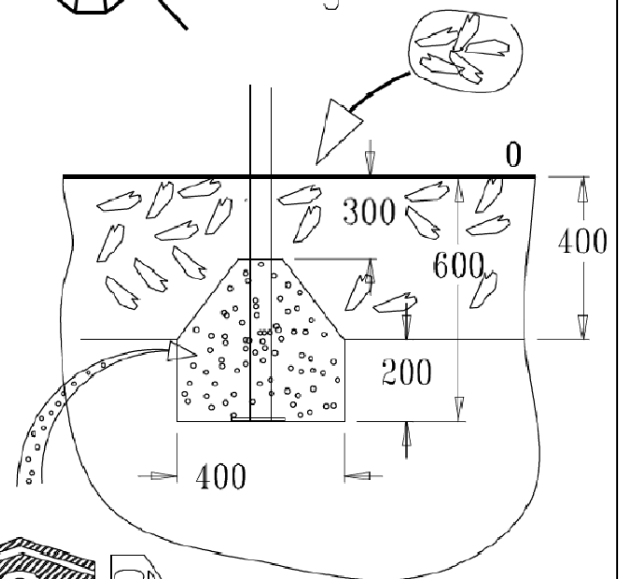
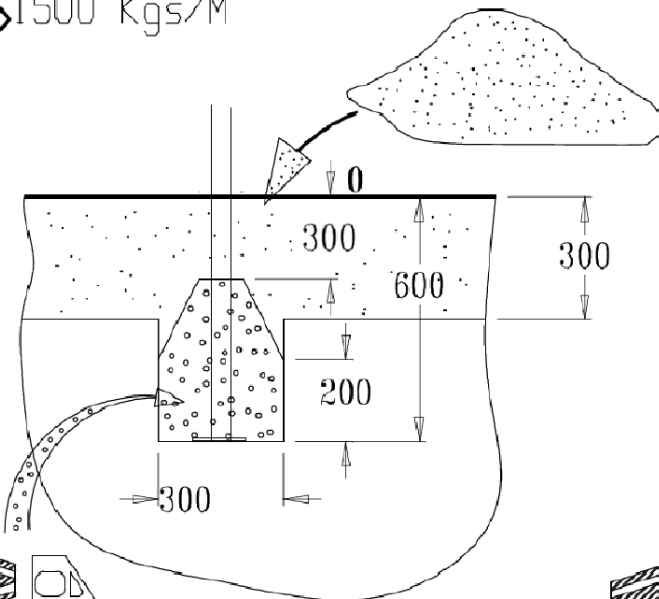
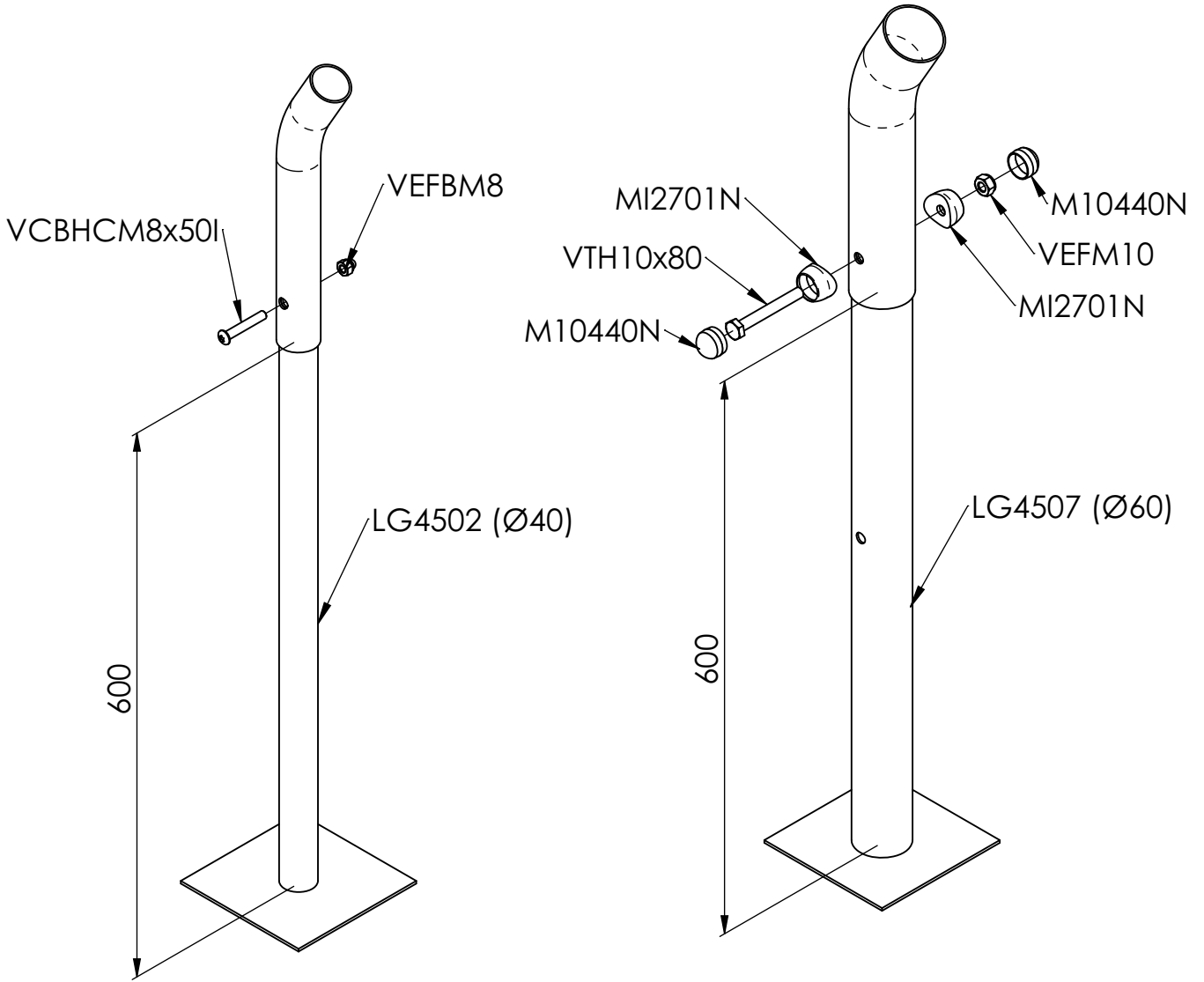
< 1500 Kgs/M<sup>3</sup>

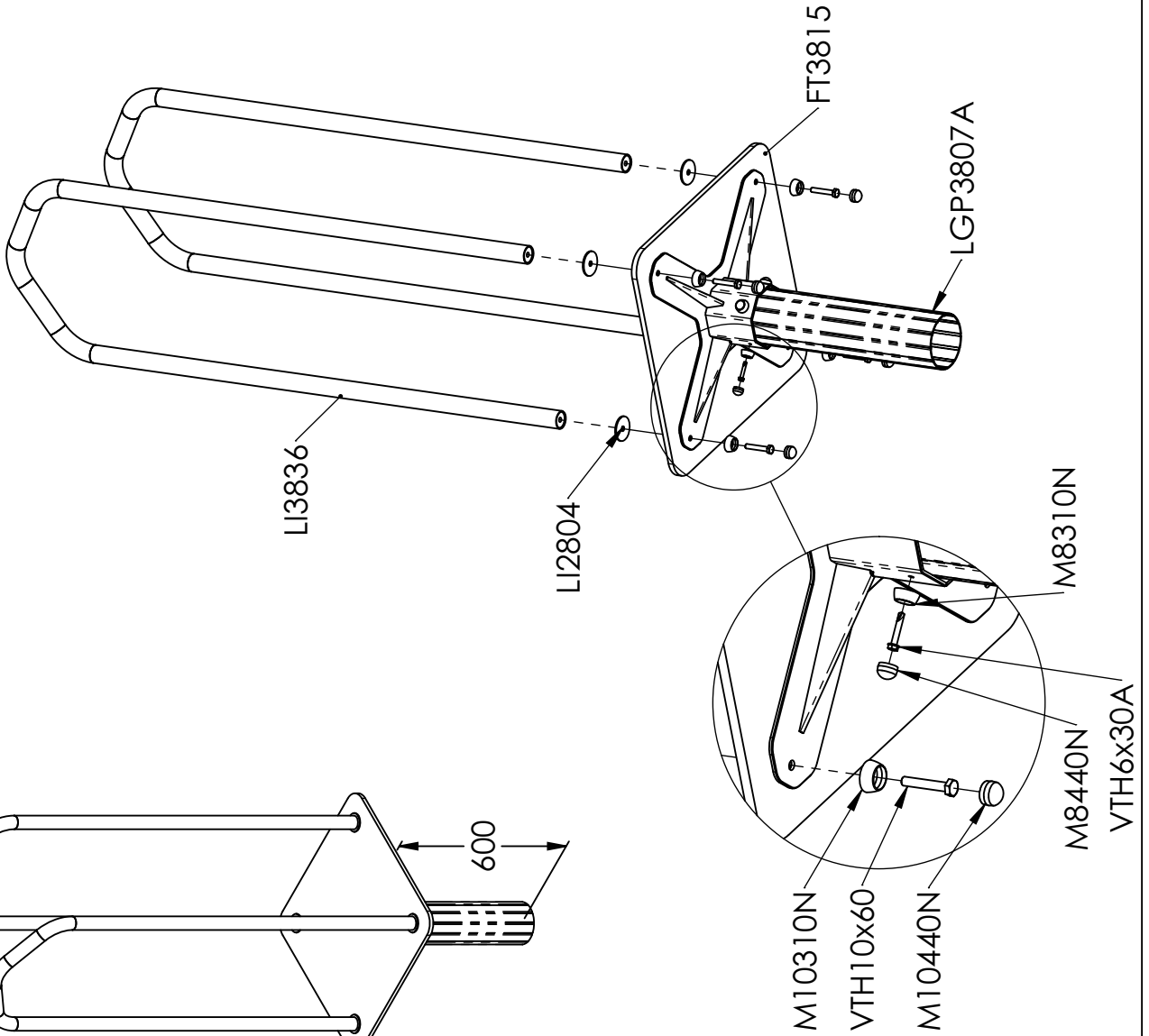
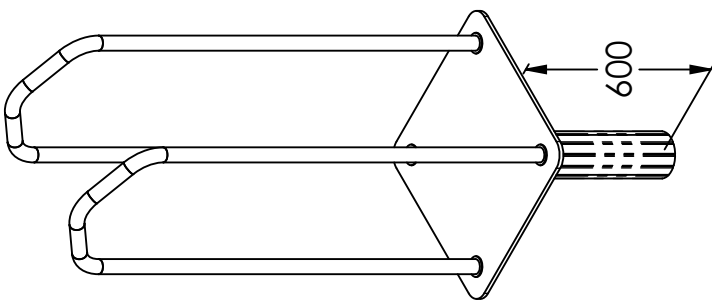


50 Kgs

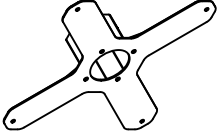


90 Kgs

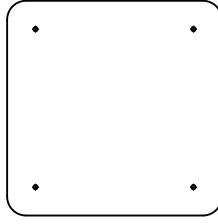




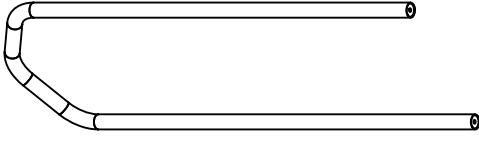
LG3810



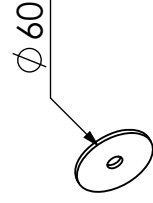
FT3815



L13836

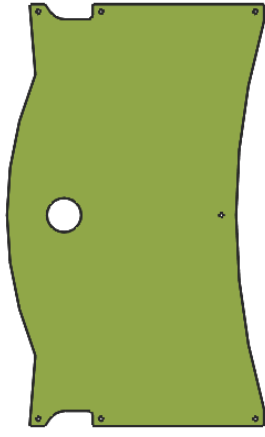
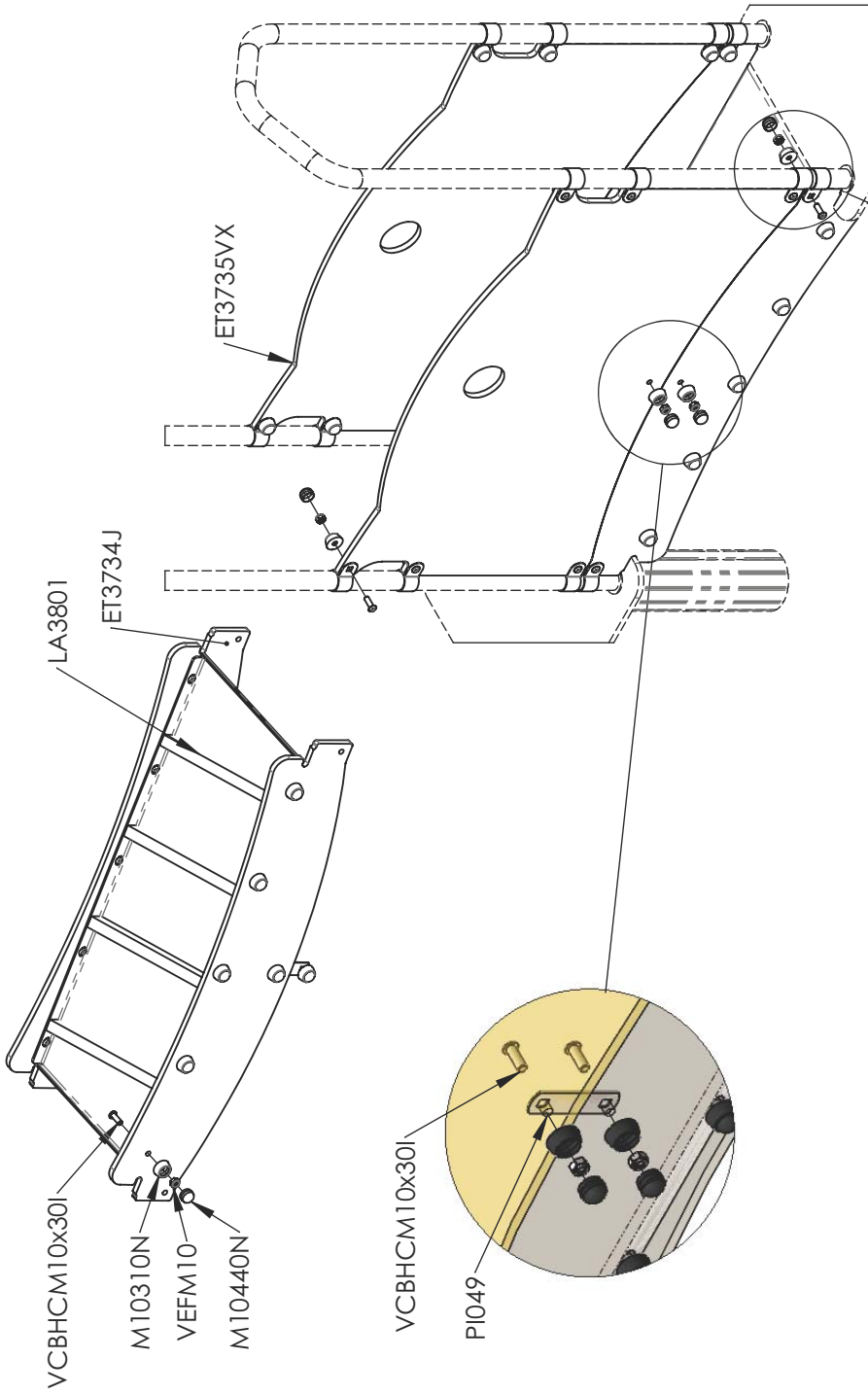


LGP3807A

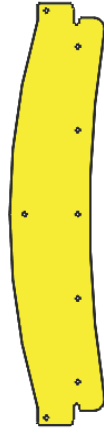


L12804

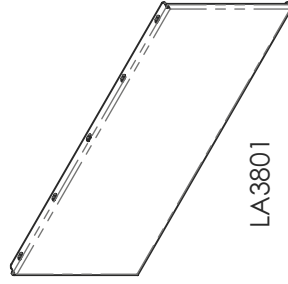
Réf	Qte
FT3815	1
LG3810	1
LGP3807A	1
L12804	4
L13836	2
M8310N	4
M8440N	4
M10310N	4
M10440N	4
VTH6x30A	4
VTH10x60	4



ET3735VX



ET3734J

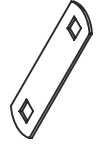


LA3801

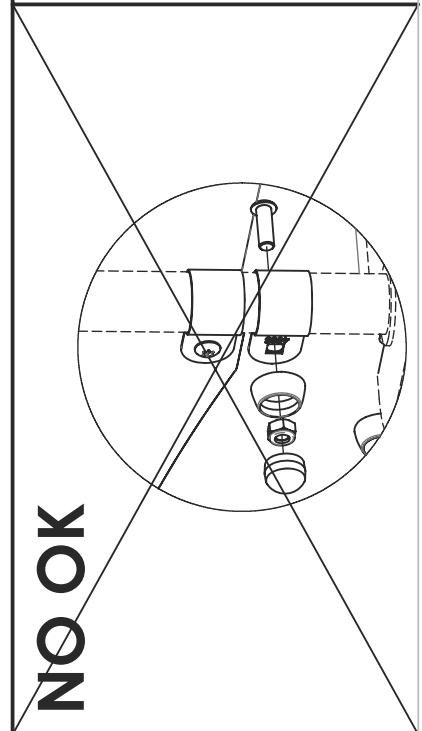
LI4505



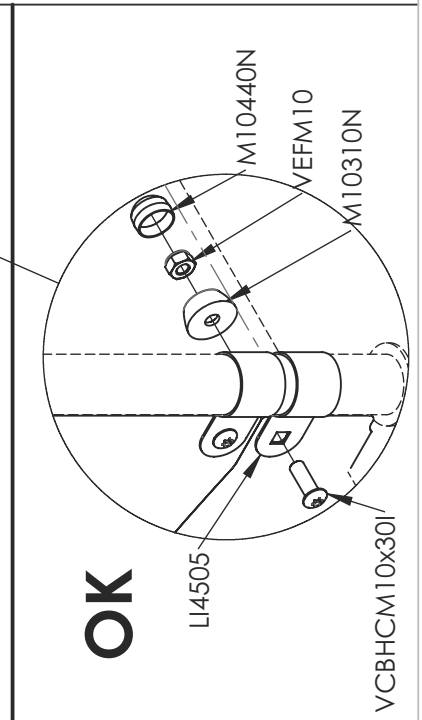
PI049



Réf	Qté
ET3734J	2
ET3735VX	2
LA3801	1
LI4505	16
M10310N	30
M10440N	30
PI049	2
VCBHCM10x30I	30
VEFM10	30



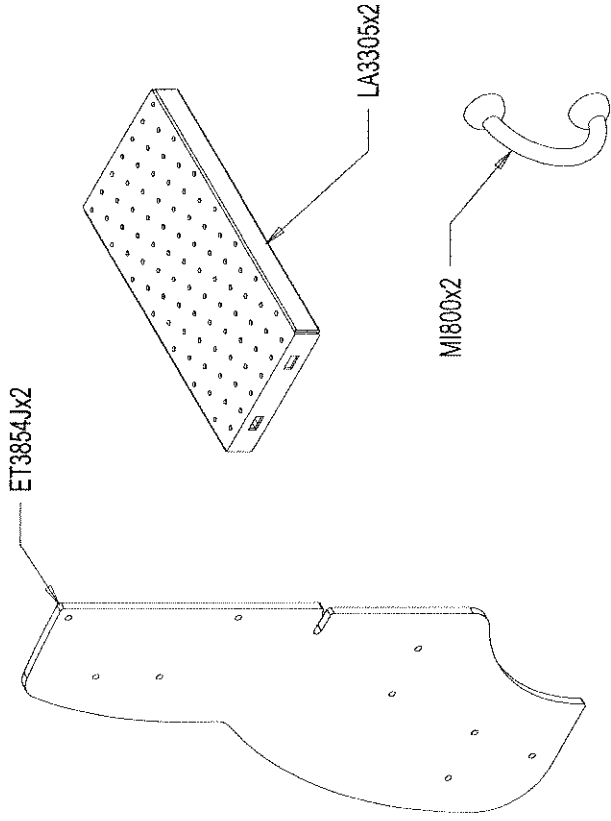
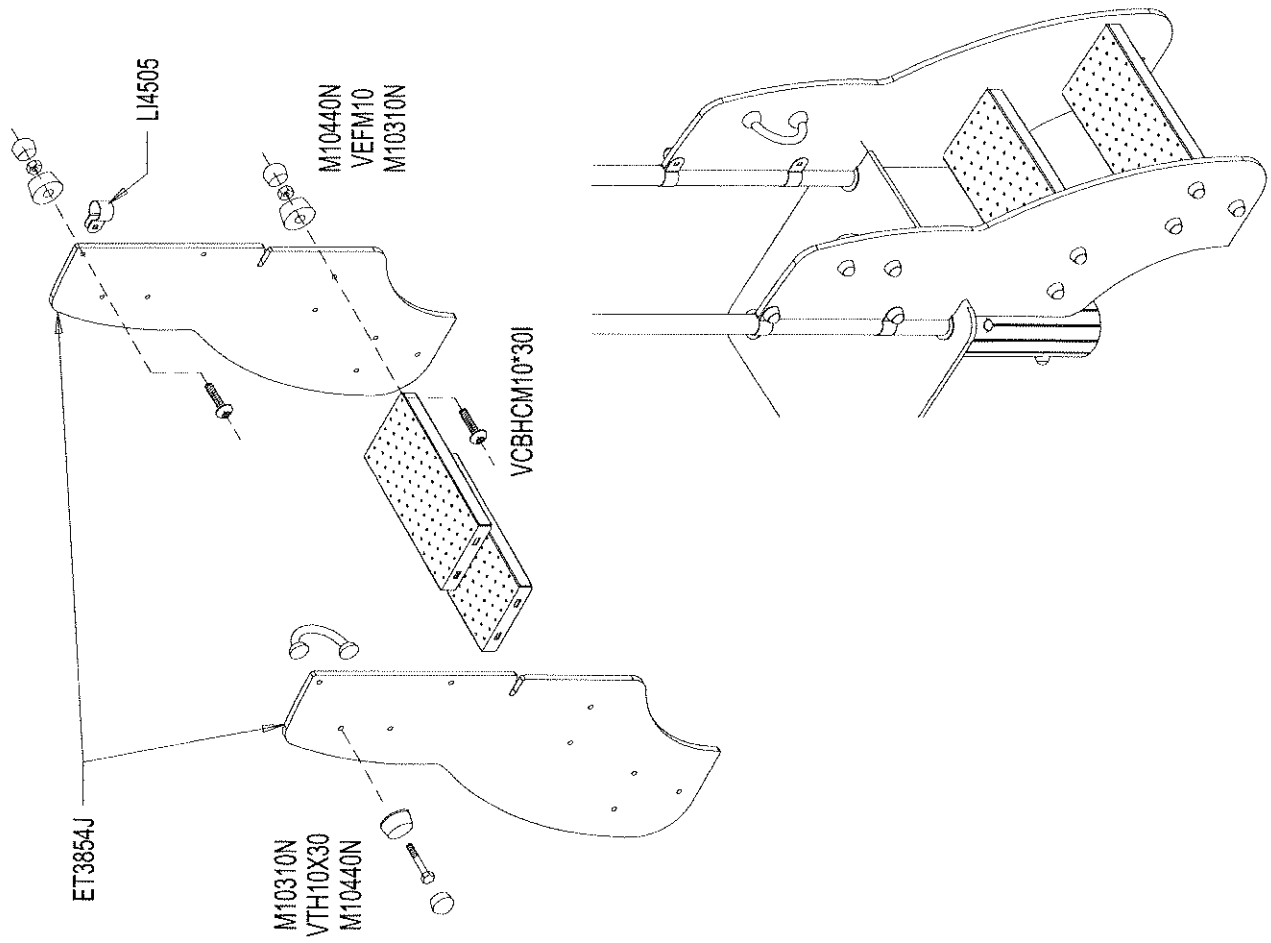
**NO OK**



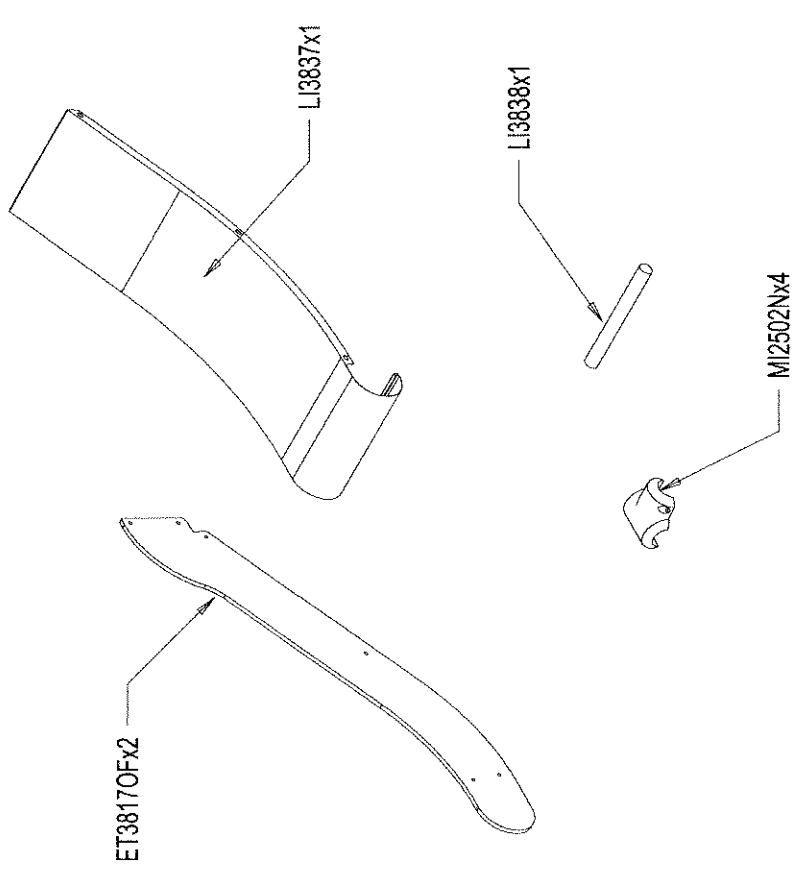
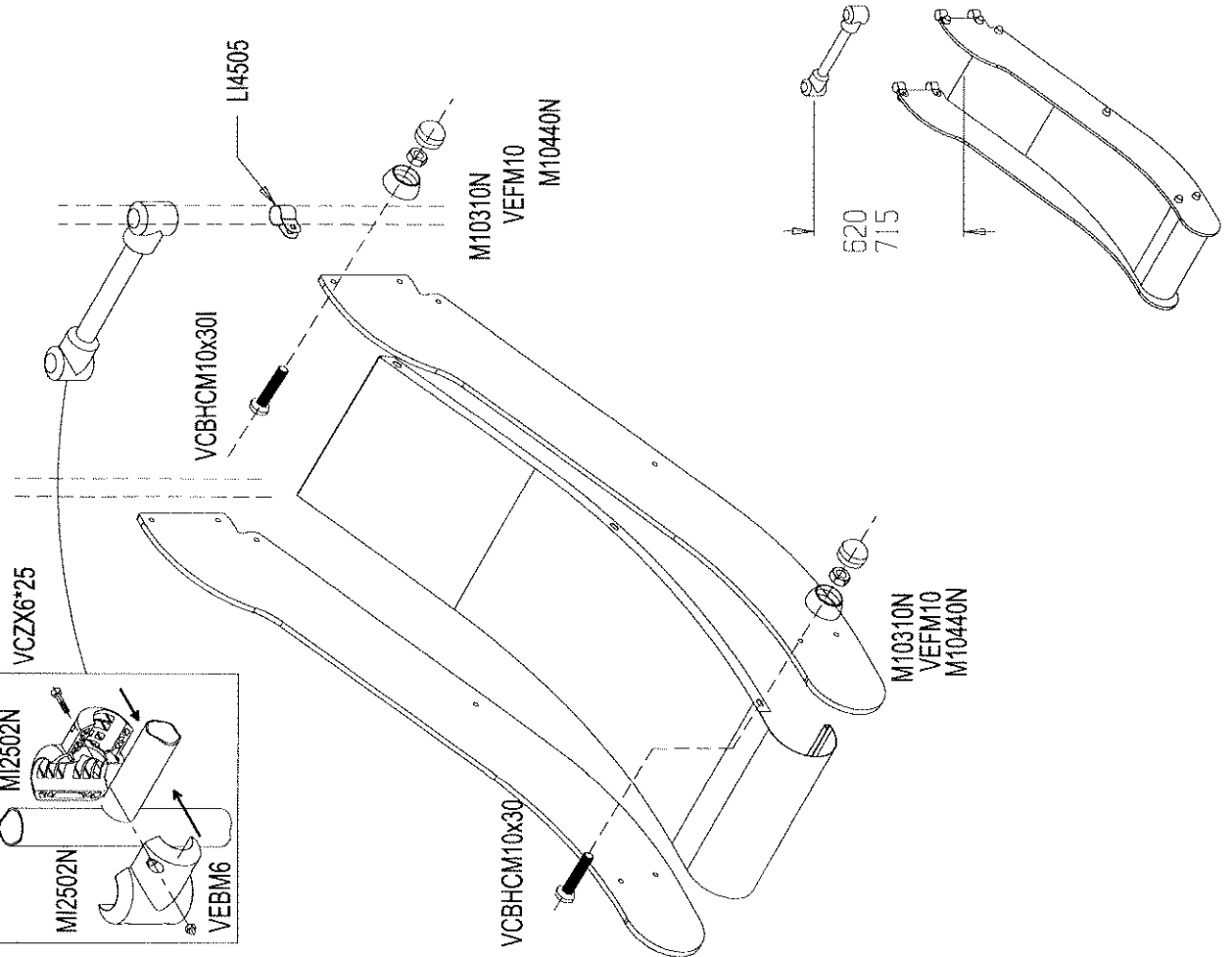
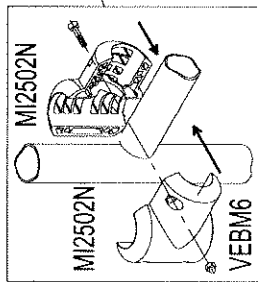
**OK**





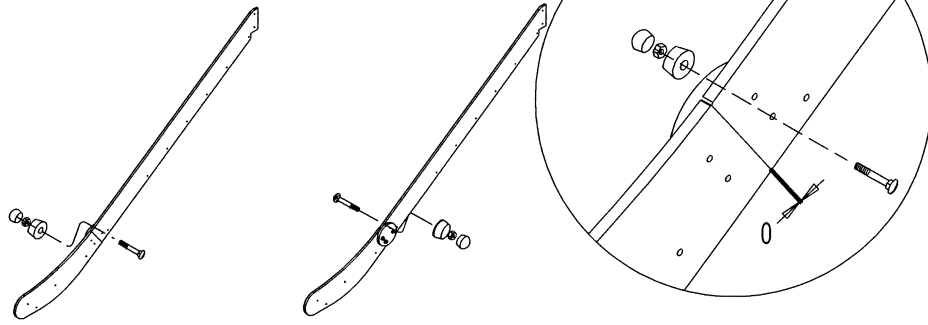


	VTH 10x30	4
	MI 800	2
	VEFM10	12
	VCBHCM10*30I	12
	M10310N	16
	M10440N	16
	LI4505	4

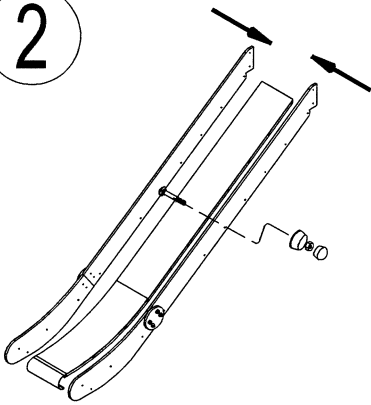


	LI4505	4
	M10310N	10
	M10440N	10
	VCZX 6x25	8
	VEBM6	8
	VEFM10	10
	VCBHCM10*30I	10

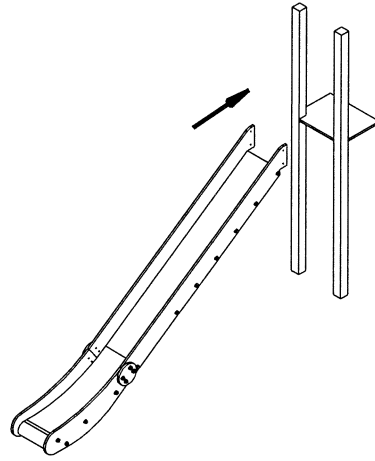
1



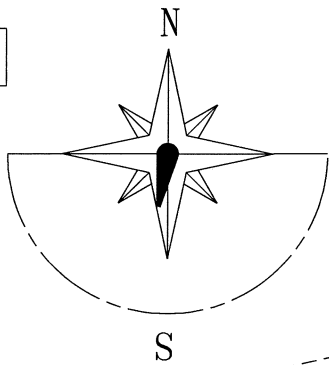
2



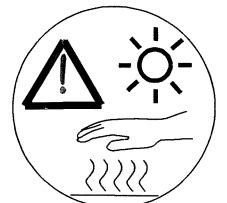
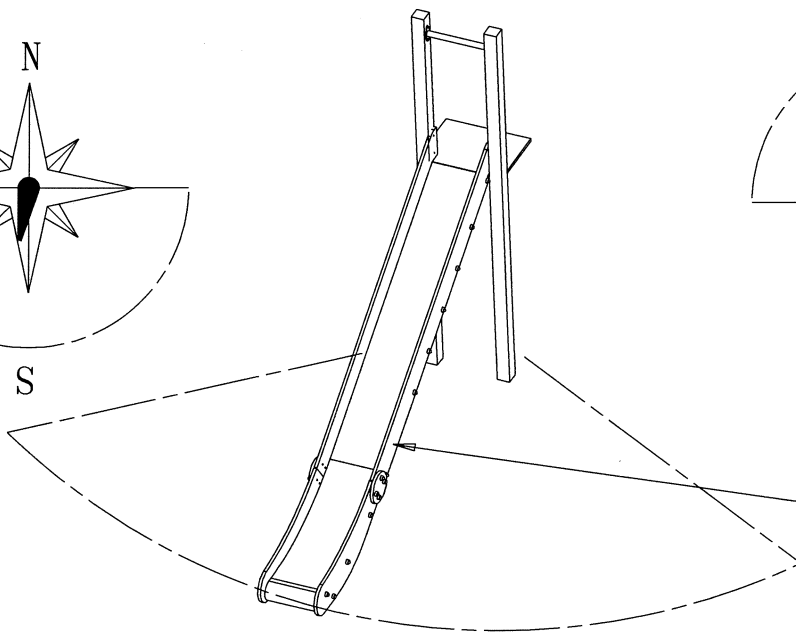
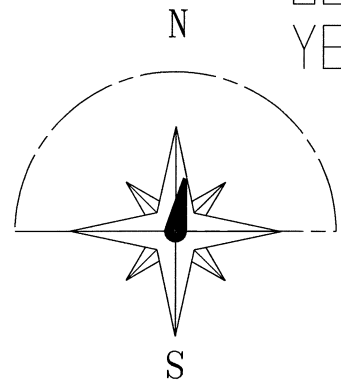
3



NON  
NO



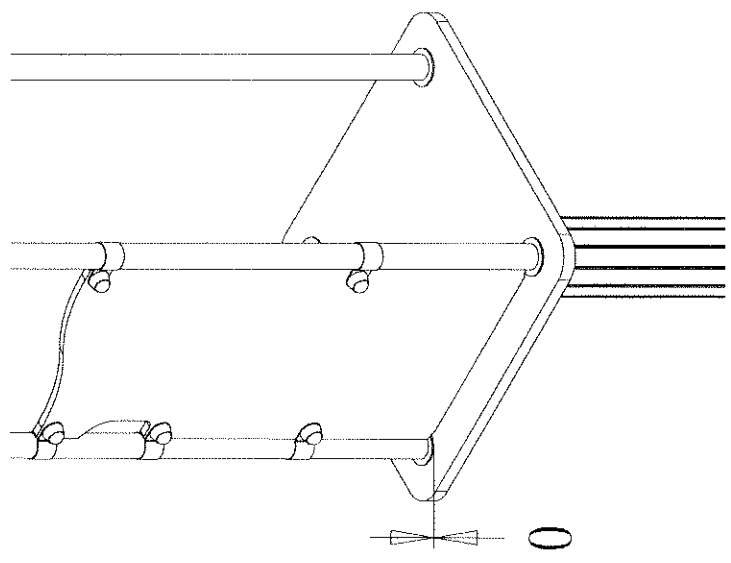
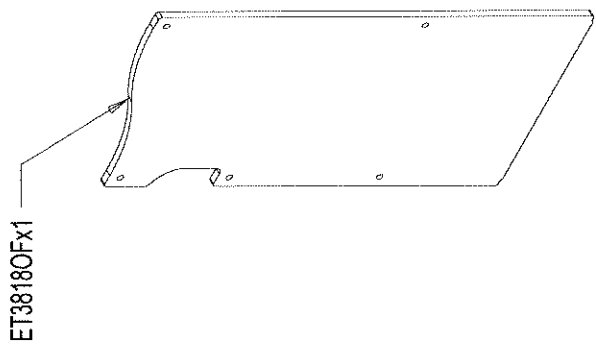
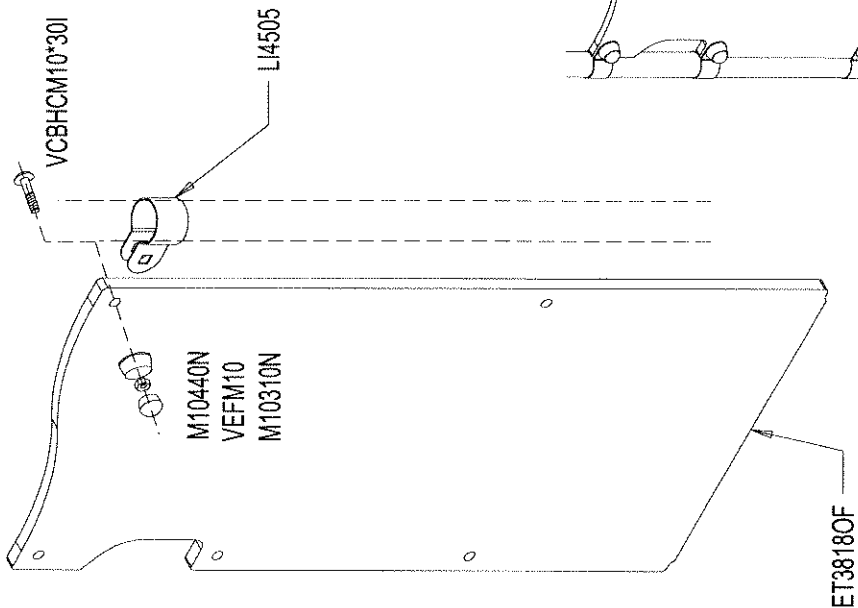
OUI  
YES



STOBG

FR

Il est recommandé de ne pas orienter la glissière Sud / Sud Ouest



	VEFM10	5
	VCBHC M10*30I	5
	M10310N	5
	M10440N	5
	LI4505	5